

HONDA

Progress with Distinction.



CRX

POISED LIKE A JUNGLE CAT READY TO POUNCE.

CRX

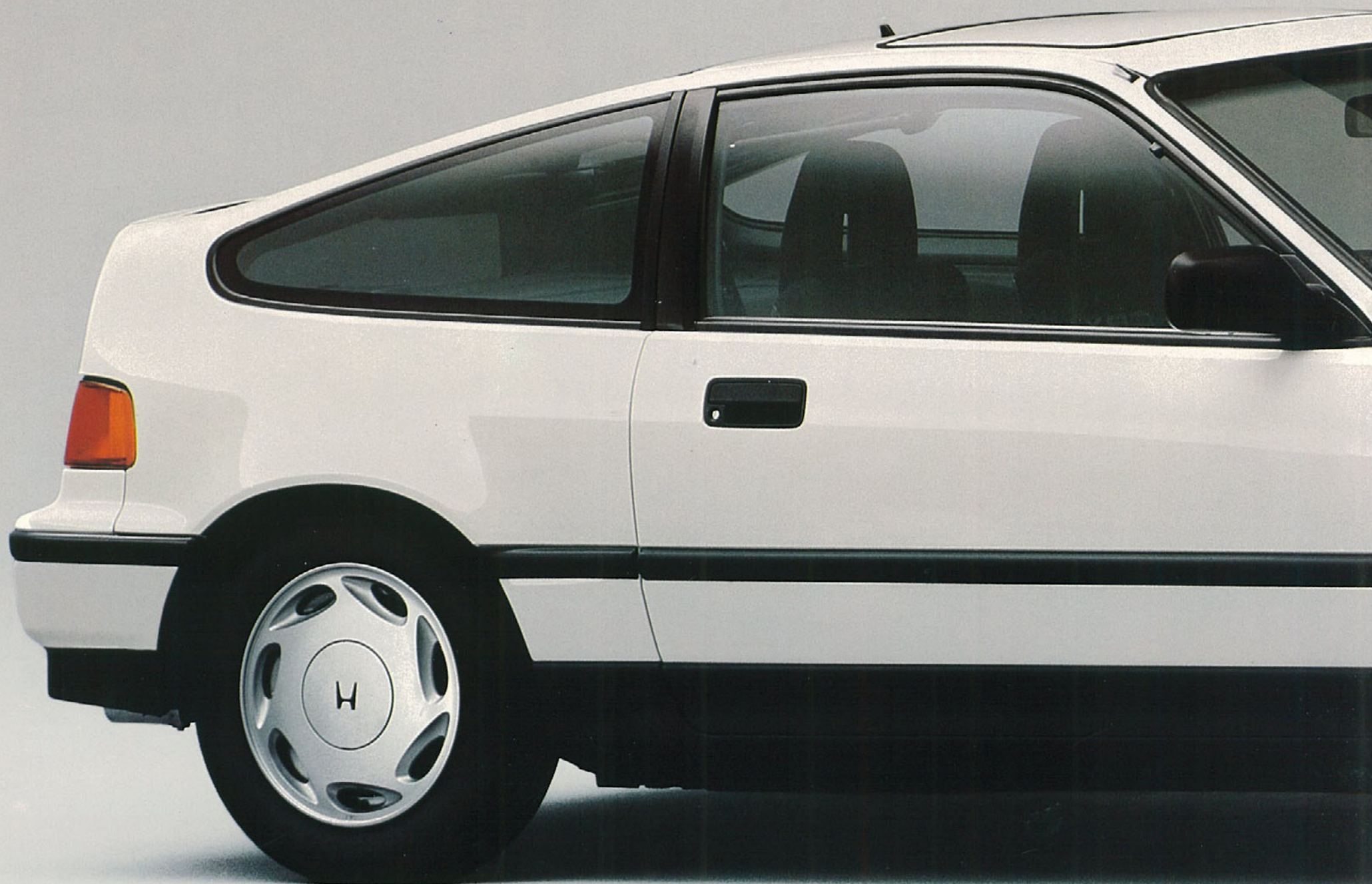
Maximum power: 94 kW/6,750 rpm. Aerodynamic co-efficient 0.30





WINNING DRIVERS UNDERSTAND THE IMPORTANCE OF CONSERVING ENERGY.

DOHC. 4 valves per cylinder. Programmed Fuel Injection (PGM-FI). Power steering. Power windows. Power mirror adjustment.



DESIGNED BY RACE ENGINEERS TO RUN ON ADRENALIN.



The Honda CRX. It makes its point with a powerful fuel injected engine. It responds to throttle movement by pushing the driver back into the seat. And in its race tune, it sounds every bit a performance machine.

The lightweight DOHC, 1.6 litre engine with 4 valves per cylinder traces its pedigree to Honda's World Championship winning Formula One experience. Then sets out on a path of its own – down the road to excitement.

1.6 litre, DOHC, 16 valves

The 4 valves per cylinder DOHC cross flow system is used to gain maximum combustion chamber efficiency. This configuration utilises the total intake/exhaust area producing higher output with fuel efficiency.

The result is a powerful 94 kW at 6,750 rpm.

Programmed Fuel Injection (PGM-FI)

Controlling the engine's fuel intake is an 8 bit digital computer. Critical engine variables are

measured, including exhaust gas temperature, crankshaft position, crankshaft speed, air intake velocity, coolant temperature, throttle position and ambient temperature. The information is fed to the computer which then ensures the correct quantity of fuel is injected and ignited at precisely the right time. Computer precise calculations – thousands of times per minute.

Lightweight 'Siamese'

Aluminium Block

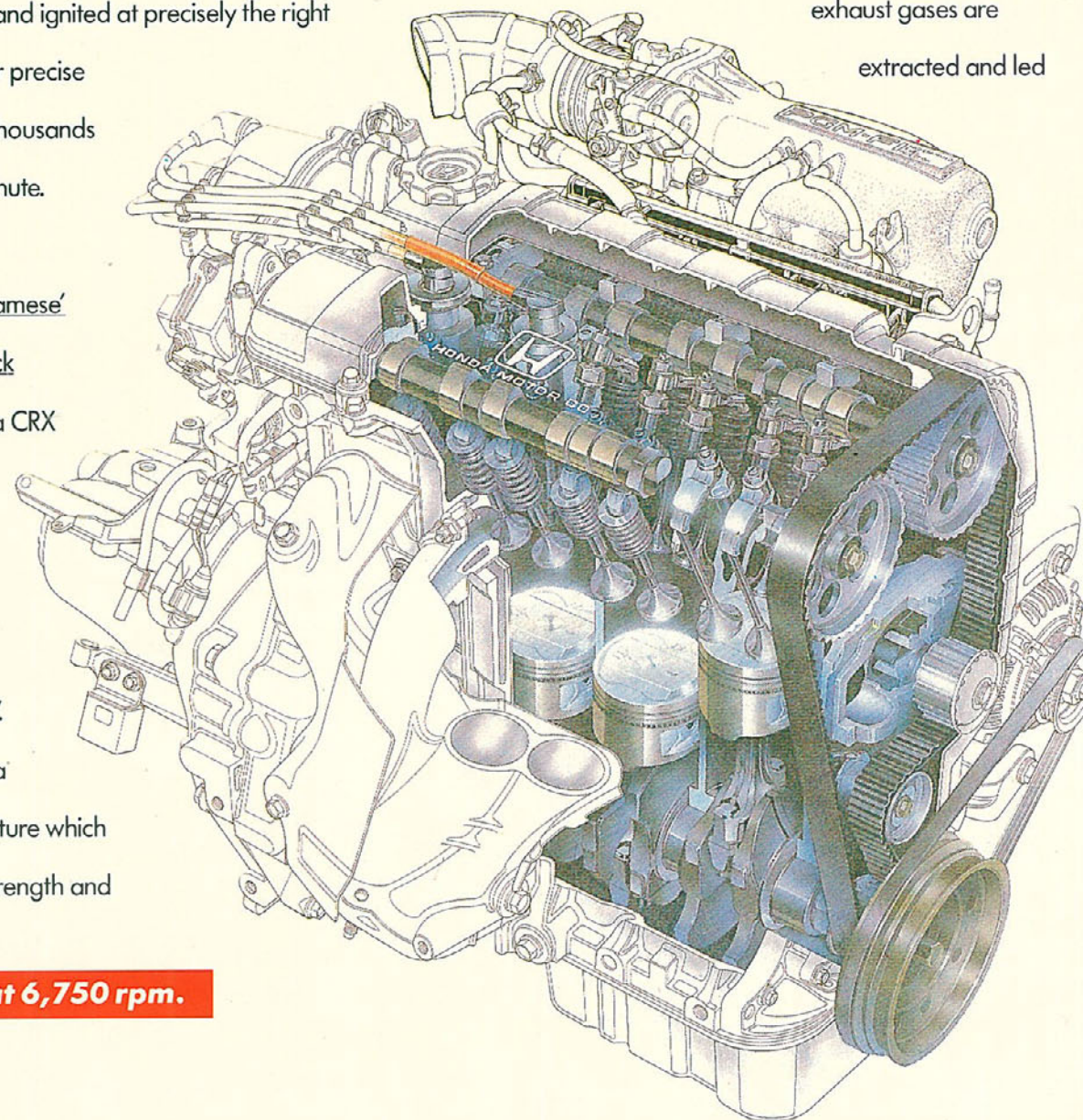
Honda CRX

uses a lightweight aluminium alloy for the cylinder 'block'. The block has a 'Siamese' structure which reinforces its strength and

cuts vibration. The overall result is an engine that's extremely compact yet very rigid.

Piston surfaces are coated with molybdenum to reduce friction and increase the power output. From the combustion chamber,

exhaust gases are extracted and led



Honda's punchy 1.6 litre DOHC engine produces 94 Kw at 6,750 rpm.

4 WHEEL DOUBLE WISHBONE SUSPENSION

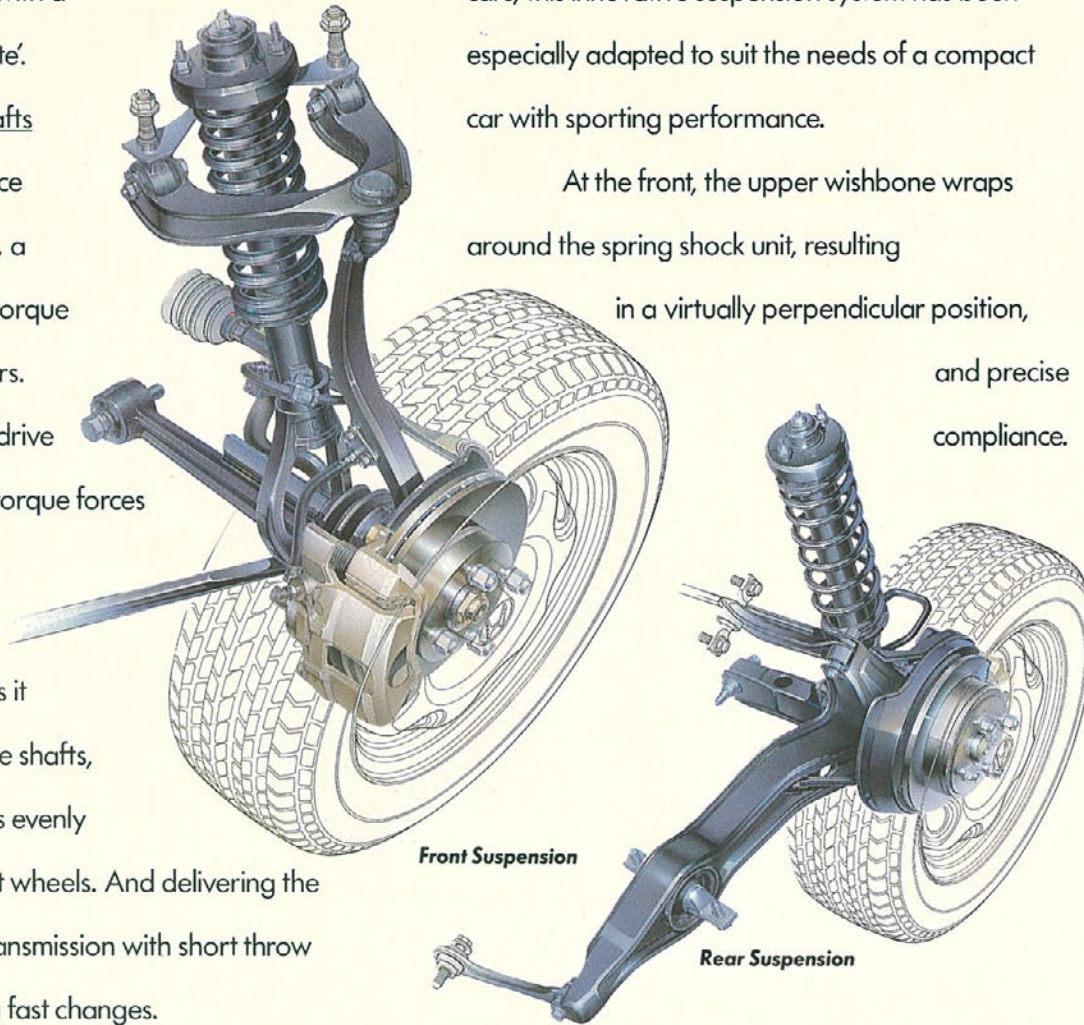
through a sporting 4-2-1-2 system which smoothes discharge and increases torque before finally expelling the exhaust with a throaty, sports car 'note'.

Equal length drive shafts

In performance front wheel drive cars, a phenomenon called 'torque steer' sometimes occurs. Different length front drive shafts place different torque forces on each wheel. But not with the CRX.

Honda equips it with equal length drive shafts, so that all the power is evenly distributed to the front wheels. And delivering the power is a 5 speed transmission with short throw lever action for racing fast changes.

With its excellent rigidity, the unitised body-chassis structure provides a solid basis for an effective suspension system. All four wheels have double wishbone suspension.



Front Suspension

Rear Suspension

The highest level of suspension technology.

Developed for Honda's Formula One race cars, this innovative suspension system has been especially adapted to suit the needs of a compact car with sporting performance.

At the front, the upper wishbone wraps around the spring shock unit, resulting in a virtually perpendicular position,

and precise compliance.

Front Suspension
Double wishbone suspension at the front not only contributes to better handling, it's compact size contributes to the aerodynamic performance.

Rear Suspension
Double wishbone suspension at the rear allows damper rates to be tuned more precisely as the spring damper units have been freed from their locating functions.

Freed from wheel locating duties, the dampers produce substantially less friction, which decidedly benefits the car's driveability.

To enhance handling even further, the Honda CRX is equipped with anti-roll bars at the front and at the rear.

Smooth, controlled stops

A car with as much power as the Honda CRX has a responsibility to be able to stop quickly, as well as being able to control that stop.

Supplying the stopping power are 4 large diameter disc brakes, with the front discs being ventilated.

At the rear, braking torque pivots on the trailing arm, pushing the tyres up. At the front an increased caster angle restricts nose 'dive'. Together this unique geometry ensures the CRX stops smoothly, and evenly.



A DRAG CO-EFFICIENT OF 0.30.

The attention paid to minute aerodynamic detail is evident in the drag co-efficient 0.30.

The CR-X has achieved this outstanding value with a low bonnet height, sporting shape and very smooth surface characteristics.

The look is stunning. Honda CR-X is a car shaped for speed.

But racing drivers know real speed is also found in attention to detail.

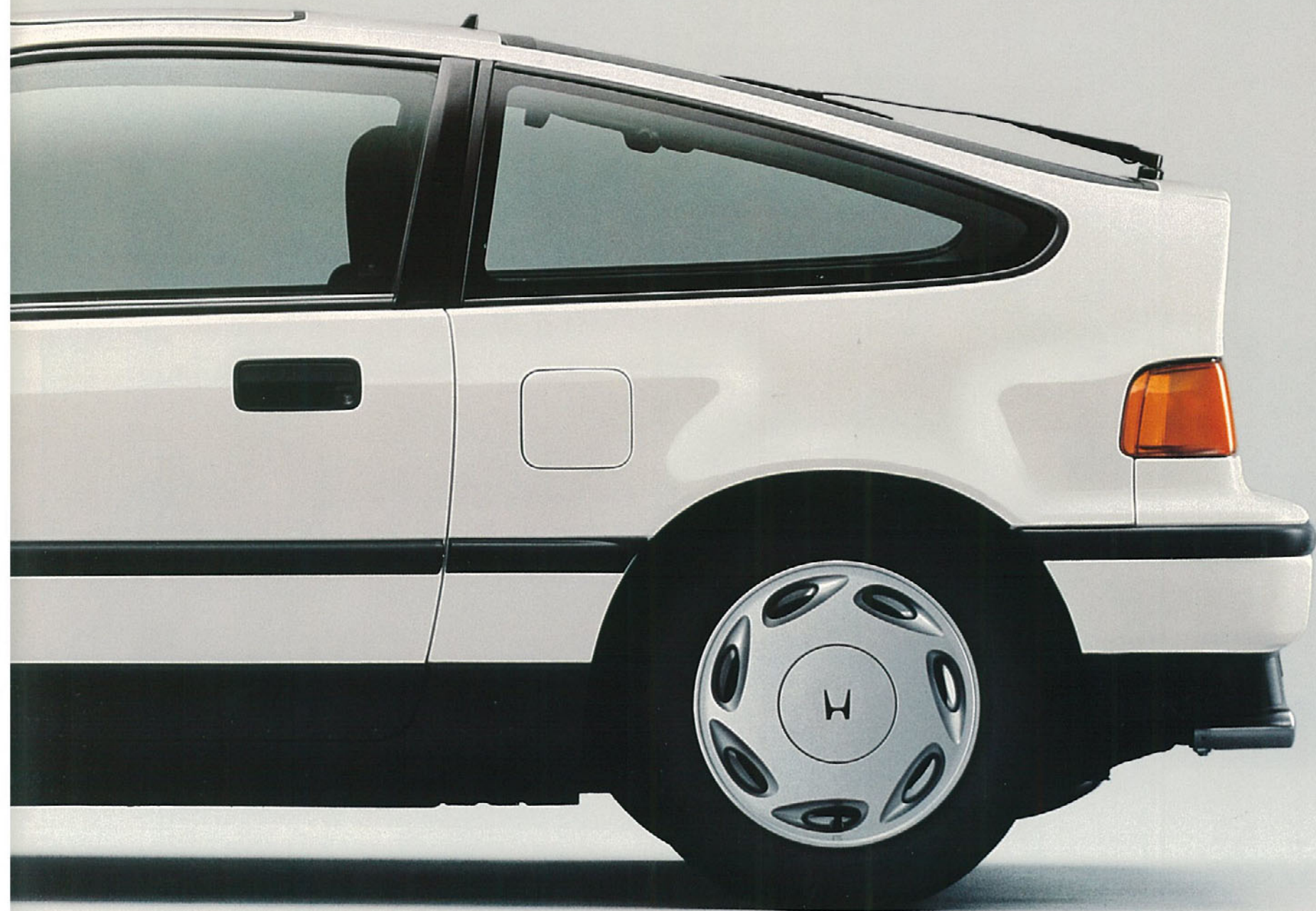
At the front the CR-X features a large body coloured bumper with a chin spoiler for high speed stability. Specially developed headlights have rounded corners for flush mounting.

A roofline with maximum aerodynamic efficiency would be impractical, as rear visibility would be restricted. Honda devised a curved roof

line corresponding with the aerodynamic angle, then ended it abruptly in a 'Coda Tronca' rear end. The rear window thus became part of the roof.

And race shape met street practicality.





A COCKPIT DESIGNED AROUND THE SPORTING DRIVER



The wrap around cockpit echoes with the roar of the race track. Tachometers flicker, waiting for the flag to drop. Gauges report the state of the engine. Seat and harness hold you tight. Your hand drops quickly to the gear shift...

Wrap around interior.

In Honda CRX no drive will ever be mundane.

Quick information instrument panel

The Honda CRX calls upon aircraft graphics to provide instruments that supply vital data to the driver with no time to waste.

Controls are positioned for instant access. Even the powerful heating/cooling system has push button controls so that the driver can adjust the

interior environment quickly – without diverting attention from the road. Visibility was a priority from the outset in Honda CRX. The windscreen is wide and curved. Front pillars are swept back.

The low bonnet height has allowed the designers to build in deep glass areas, both front and side, so the driver can see both the long straights ahead and the sharp corners to the side.



A FULLY FUNCTIONAL VEHICLE

Sports driving is only part of a CRX driver's lifestyle. That's why the CRX is fully in tune with what's needed today.

The race style front bucket seats recline.

A remote control fuel filler cap and boot release save time at the shops.

The Honda CRX even has power windows, power steering and power mirror adjustment. So the driver can concentrate on one thing—going places.

The Honda CRX. It may have been born on the race circuit. Where it lives is up to you.

24/36/72 Month Warranty—The Honda 3 Phase Protection Plan.

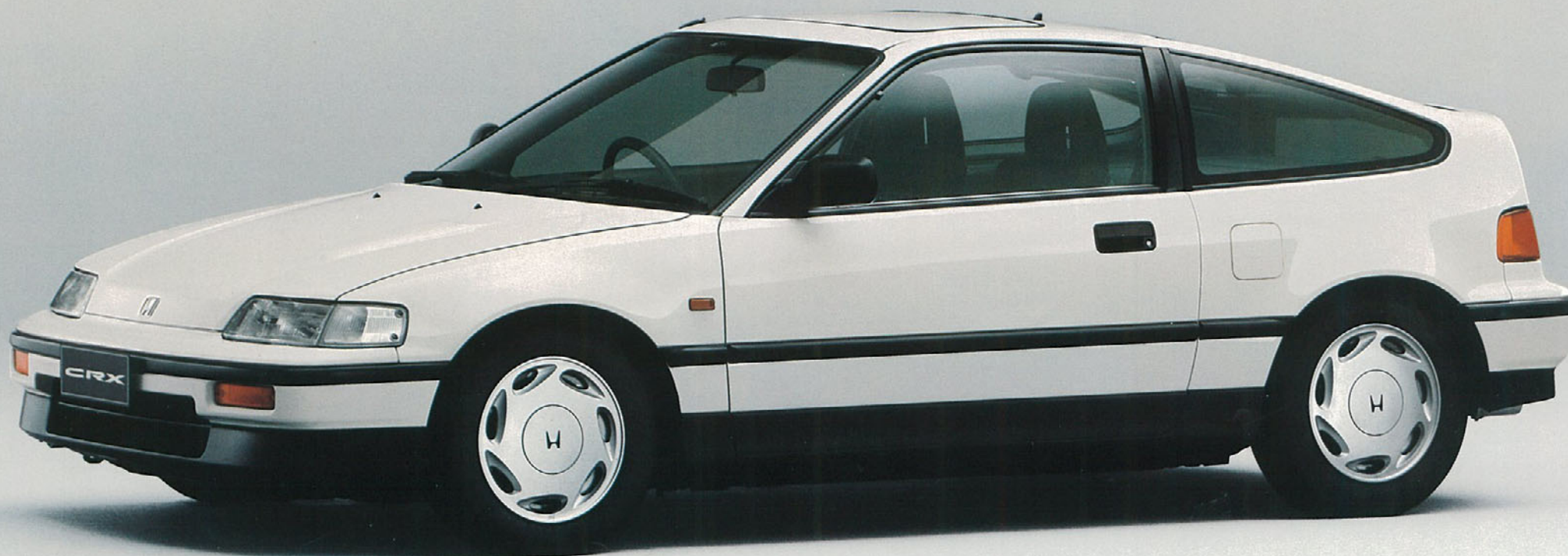
Your investment in a Honda is even further protected with Honda's 3 Phase protection plan.

All Honda cars come with a 24 month unlimited kilometre vehicle warranty against any

defects in material or workmanship under normal conditions of use.

There is also a 36 month warranty against surface corrosion and a 72 month warranty against rust penetration. To maintain your protection, your vehicle must be inspected by an Authorised Honda Dealer at 12 months and 24 months, at no cost to you.

This is in addition to your statutory rights. Your dealer will provide you with full details on the Honda 3 Phase Protection Plan.



1991 CRX SPECIFICATIONS

	DATA
Engine Type	1.6 litre D.O.H.C. 16 valve
Cylinder arrangement	In line 4 transverse
Displacement (cc)	1590
Bore and stroke (mm)	75 x 90
Maximum horsepower (kW @ rpm)	94 @ 6750
Maximum torque (kg/m @ rpm)	14.4 @ 5750
Compression ratio	9.5:1
Fuel tank capacity (litres)	45
Fuel required (ron)	91 or higher

EXTERIOR DIMENSIONS

Overall length (mm)	3750
Overall width (mm)	1675
Overall height (mm)	1265
Wheelbase (mm)	2300
Track front/rear (mm)	1450/1455
Ground clearance (mm)	133
Turning circle (metre)	9.8
Curb weight (Man) (Auto) (kg)	880 (Man only)

MECHANICAL FEATURES

Front wheel drive	With equal length drive shafts
Manual transmission	5-speed
Front suspension	Double wishbone
Rear suspension	Multi control double wishbone
Gas pressurized front and rear shock absorbers	*
Front and rear stabilizer bars	*
Steering type (hydraulic reactive)	Power assisted rack and pinion
Servo assisted 4-wheel disc brakes	Front vented
PGM-FI programmed fuel injection system	Sequential multi-point
PGM-IG programmed ignition system	Digital
Maintenance free battery	*

EXTERIOR FEATURES

3-coat 3-bake paint process	*
Side protection mouldings	*
Semi concealed front drip mouldings	*
Resin side sill protectors	*
Impact absorbing bumpers	Body coloured with integrated front air dam
Laminated front windshield	With band tint
Unique see through rear hatch	Smoked glass
Halogen headlights	Driving lights built into main headlights
Wheels	* 5J x 14 alloy
Steel belted radial tyres	Michelin 185/60 VR14
Dual chromed tail pipes	4.2.1.2 system

INTERIOR FEATURES

Velour trim	*
Fully reclining front bucket seats	*
Tilt adjustable steering column	*
Front wiper/washer system	With intermittent and mist modes
Rear wiper/washer system	*
Driver's foot rest	*
Tachometer, speedometer, tripmeter and odometer	*
Comprehensive dashboard warning lights	*
Headlights on reminder	*
Rear window demister	*
Day/night rear view mirror	*
Passenger vanity mirror	*
Digital clock	*
Full flow heater with full front window and side window demisting	4 speed fan control
Push button ventilation and dial temperature controls	*
AM/FM stereo cassette player	2 speaker system
Cigarette lighter and ashtray	*
Angled centre console	*
Centre console storage compartments	*
Power operated sun roof	Outer slide type
Power operated mirrors	*

Power operated windows	One touch function/driver's side plus isolator switch
Coin pocket	*
Front door pockets	*
Remote hatch and fuel lid openers	*
Passenger grab handle	Front x 1
Coat hanger	x 1 R.H.R.
Lockable rear storage compartment	*
Removable rear shelf	*
Cargo area	Illuminated

SAFETY FEATURES

Highly rigid monocoque body	*
Door intrusion bars	*
Seat belts front (3-point ELR x 2)	*
Dual circuit diagonal braking system	*
Brake fluid warning indicator	*
Padded instrument panel	*
Energy absorbing steering column	*
Impact absorbing bumpers	*
Centre high mount stop light	*
Hazard warning lights	*
Comprehensive dashboard warning lights	*

EXTERIOR/INTERIOR COLOURS

EXTERIOR	CODE	INTERIOR
Rio Red	R-63	Black
Blade Silver	NH-95M	Black
Polar White	NH-512Z	Black
Flint black	NH-526M	Black

* Indicates included on model.

Note: The Specifications and Major Features listed herein are accurate as at the date of printing (December 1991), however, Honda Motor Co. Ltd., and Honda Australia Pty Ltd, reserve the right to change or modify Specifications and Major Features at any time without prior notice. Specifications may also vary in some States, please check current specifications with your Authorised Honda Automobile Dealer before purchase. Due to ordering, shipping and freight factors, some colour and model availabilities may vary from time to time. Check with your Honda dealer for current information on availability.



Ask your dealer for details.





HONDA SUPPORTS SAFE
DRIVING. TAKE CARE ON THE ROAD.

H HONDA

Honda Motorvehicles, Honda Australia Pty. Ltd.
A.C.N. 004 759 611, Lot 95 Sharps Road, Tullamarine, Vic. 3043.
Melbourne (03) 285 5555, Perth (09) 458 9811, Brisbane (07) 368 3744, Sydney (02) 748 6511.