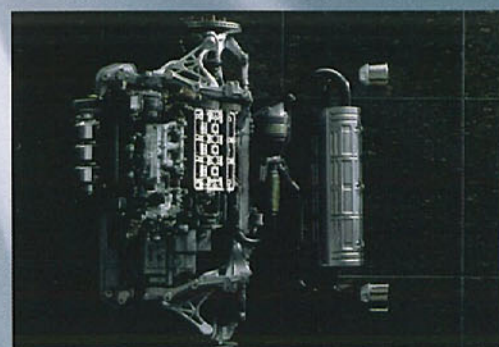
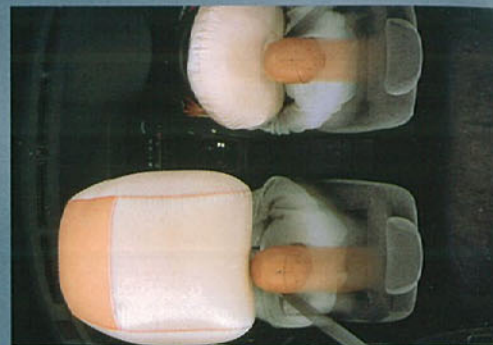


HONDA CR-V





Everything we do is driven by the single-minded vision of our founder, Soichiro Honda: "...to challenge conventional wisdom and create new, more useful technology."

This means utilising technology to create safer, more efficient and more user-friendly vehicles, and is the basis for what we call Human-Centred Engineering.

Undoubtedly motor racing provides the quickest road to achieving such innovation, bringing out the best in those behind the drawing board as much as those behind the wheel. That's why Honda contested 186 Formula One Grands Prix, proudly achieving 71 victories and a plethora of engineering advances.

Today this research and development

successfully continues unabated in Indy racing.

It was a direct result of our Formula One program that Honda created the NSX.

NSX pioneered many beneficial advances including VTEC - which are now endowed to the range. But, of course, nothing is more important to our future than engineering that addresses the needs of our environment.

Honda continues to develop new solutions that deliver a better quality of life for not just the driver but all, including the successful development of alternate energy vehicles.

As a result of challenging the conventional, every Honda is more powerful, reliable, safe and responsible. Yet best of all, it is also more pleasurable to drive.



Cover: CR-V Sport model shown.

Whatever your lifestyle. However you want to live it.

That's up to you and the CR-V.



CR-V Sport model shown.

Introducing the Honda CR-V. Life just became even more fun.

Because although the CR-V is a 4WD - thanks to Honda's latest innovation, RealTime 4WD - it also has all the manoeuvrability and driving pleasure of a sedan.

So it's as ideal for the country as it is for the city.

Packed with loads of features, the compact, yet roomy CR-V is the vehicle to fit any lifestyle. It seats 5 passengers in comfort and delivers the dynamic performance you'd expect from a Honda.

With its extraordinary versatility, the Honda CR-V really will help you get more out of life.

Sedan, 4WD and Sports Car:

The CR-V's got it all.



Convenient two-way tailgate.
CR-V Sport model shown.

The CR-V really does give you the best of both worlds. Unlike conventional heavy duty 4WDs, the CR-V's frame is designed to offer greater rigidity with less weight. So it handles like a sedan not a truck.

Not only does it drive smoothly, it also looks the part. It has the unmistakable style of a Honda with a personality all its own. So it's ideal for those formal occasions as well as those not so formal - like driving through the countryside.

With a distinctive appearance that lends itself to practicality and versatility, the CR-V's expansive glass area and raised seats give you the perfect vantage point in traffic. Even though the seats are raised to offer superior visibility, their hip-height position makes getting in and out very easy, whilst the spacious cabin layout provides enough room for stretching out on those long journeys. And a low step height means you don't need a ladder to get in.

The two-way tailgate opens separately for convenient loading and unloading while the tail lights, positioned high on the rear, are less likely to be covered in grime. Plus, the sporty bumpers and side sills are made of durable plastic to resist chipping.

CR-V
Sport

CR-V Sport model shown.



Speaking of sporty, Honda has now designed a CR-V that's exactly that. The magnificent new CR-V Sport is not only equipped with Honda's latest technology and the extraordinary versatility of the original CR-V, it's packed with loads of standard features most other 4WDs only offer as extras.

As well as ABS brakes, an electric sunroof, 5 alloy wheels and roof rails, the

CR-V Sport also comes with a variety of other features. These include body-coloured bumpers, door handles and mirrors, spare wheel cover, driver's seat height adjuster, front fog lamps and a convenient storage tray underneath the passenger seat.

So if you're after a sporty car, sedan and 4WD all rolled into one, test drive a CR-V Sport.

FEATURES

Your journey of discovery begins on the inside.



Movable driver and passenger front seat armrests. (auto version)



Rear seat centre armrests.



Removable waterproof well in cargo floor.

With all of the CR-V's many features and functions, you could say Honda has included everything but the picnic table.

Well, actually, that's included too!

And it's not only a picnic table, but a floor reinforcement for the flat cargo area. Which is very handy when you consider the amount of luggage you can pile into the area. Especially with the split back seat folded down.

Air conditioning, AM/FM radio, cassette stereo, keyless entry central locking and immobiliser - sure the CR-V's got all of those. But how many cars include brilliant devices such as: a 12 volt accessory outlet in the cargo area, a convenient folding tray and a large pull-out storage bin? Not to mention a plastic removable well underneath the cargo floor to contain your wet ski gear or dirty shoes.

With all these modern conveniences built into its spacious and very ergonomic interior, everything is well within reach. You could say the CR-V is more like a five star hotel room than a car.



CR-V Sport model shown.



Seats five passengers in comfort.



Different seating and cargo configurations.



Seats can be totally reclined to make up beds.



CR-V Sport model shown.

Just sit back, relax and enjoy the ride.

After all, the only decision you have to make

in the CR-V is "Which way will I go?"

The CR-V won't make you compromise. Because it's compact, yet spacious. Sturdy, yet manoeuvrable. Economical, yet powerful.

Driven by a compact, lightweight, 2.0 litre, double overhead cam, 16 valve engine, the CR-V's performance is nothing short of dynamic. With the option of 5-speed manual or 4-speed automatic transmission, its double wishbone suspension provides balanced handling, eliminating excessive roll. This, along with reduced engine noise and vibration, means the CR-V not only conquers bumpy gravel roads easily, but smoothly.

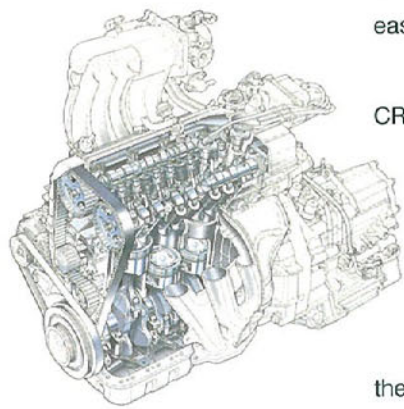
For those especially slippery roads, the CR-V has RealTime 4WD. This technology means it operates in front-wheel drive normally but automatically switches to four-wheel drive if you encounter anything less than ideal surface conditions.

Because you're not in 4WD mode all the time, this brilliant concept saves you petrol and money and - with no driver intervention involved - it means you don't have to do a thing, just keep your eyes on the road and steer. Which is quite easy with power-assisted, rack-and-pinion steering.

But just when you thought it couldn't possibly get any easier, enter another example of Honda's ingenuity: Grade Logic



CR-V base model shown.



Gutsy 2.0 litre, 16 valve engine.

Control. Offered by no other 4WD, this fully computerised technology adjusts gear shift points according to driving conditions. When climbing or descending a slope, it downshifts to hold a lower gear, controlling the vehicle, while in heavy, stop-start traffic it adjusts to improve performance. Suddenly, getting caught in traffic doesn't seem so annoying.

Protection all round. Even for the environment.

Not only does the CR-V meet the world's toughest safety standards - including European side impact standards - it complies with the even more stringent safety legislation for passenger cars, unlike some 4WDS.

The CR-V's highly rigid frame comes with front and rear impact-protection along with crumple zones and dual SRS airbags. But you will find safety working in many other ways when driving the CR-V.

Like raised seats for increased visibility, 15 inch tyres and predictable, safe handling.

And while protecting you, the CR-V also protects the environment. Constructed with a high level of recyclable components, as well as a non-CFC air conditioner gas, the CR-V is the embodiment of Honda's responsible attitude towards the environment.

You could call the Honda CR-V the environmentally-conscious 4WD. But one thing you could never call it is boring. Because after all, it's the vehicle that makes life even more fun.



Front crumple zone.



Dual SRS airbags are standard.



CR-V Sport model shown.

The world's finest cars:

the world's finest after sales service.

At Honda, providing the world's finest after sales service is just as important as building the world's finest cars.

The entire Honda Dealer network is dedicated to keeping your new Honda at peak performance, so it gives you years of pleasure.

Honda Dealer staff and technicians are factory trained and keep up to date with the most advanced technologies by attending an ongoing series of seminars and training courses. To ensure only the highest standards are maintained, we have strict requirements of a person or company wishing to open a Honda Dealership.



Every Honda Dealer maintains a comprehensive inventory of Genuine Parts and has access to a central warehouse via the Hondanet computerised order/supply system.

Nobody can service and tune your car like we can. Our cars have such precise engineering that we use specialised, high-tech equipment, unique to Honda. To maintain the value of your car it should always have regular services. And it always pays to insist on Honda Genuine Parts.

Every new Honda motor vehicle comes with our 3-year, 80,000km warranty. This includes a 3-year surface corrosion warranty and a 6-year rust perforation warranty.

We are committed to providing prompt, courteous service in a professional manner at the time of purchase and throughout your ownership.



HONDA

The Honda Way

"Our Pledge to a Unique Experience"

When you purchase a Honda, we dedicate ourselves to a standard of sales and after sales service that is consistent with the outstanding quality of our products.



CR-V Sport model shown.



Honda Australia Pty. Ltd. ACN 004 759 611.
95 Sharps Rd Tullamarine, Victoria 3043.
Melbourne (03) 9285 5555 Brisbane (07) 3862 4777 Sydney (02) 8748 3333
Perth (08) 9277 0444 Freecall 1800 672 217 www.honda.com.au

The specifications and major features listed herein are accurate as at the date of printing (March 1999/1999 YM). However, Honda Australia Pty. Ltd. reserve the right to change or modify specifications and major features at any time without prior notice. Due to ordering, shipping and freight factors, some colour and model availabilities may vary from time to time. Check with your Honda Dealer for current information on availability.

Printed on recycled paper.
Sanford Vick CRV139