 Honda CR-V



CR-V

**HONDA**  
The Power of Dreams

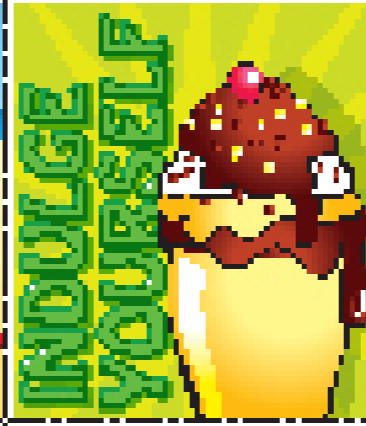
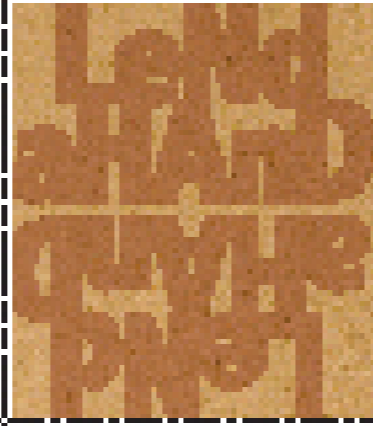
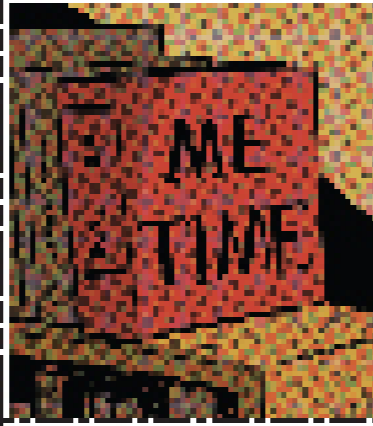
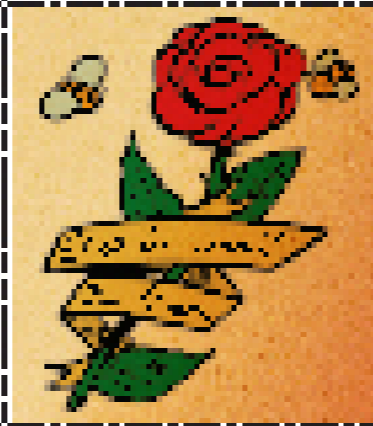
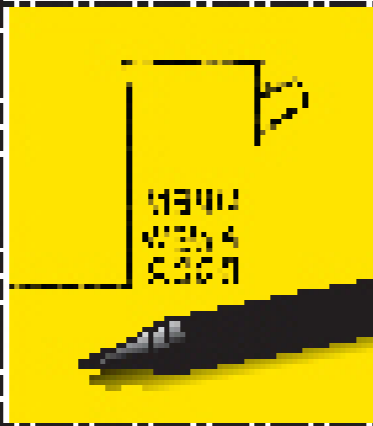
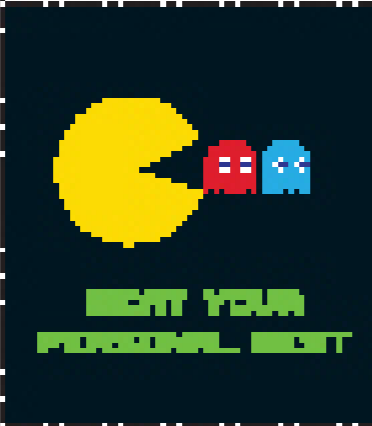
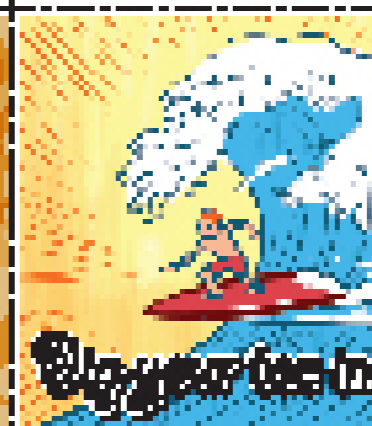
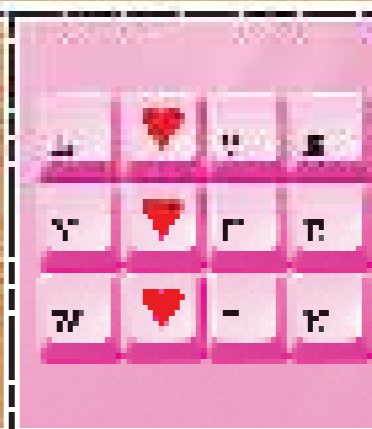
Honda Australia Pty. Ltd. ACN 004 759 611 ABN 66 004 759 611  
95 Sharps Road, Tullamarine, Victoria, 3043. Freecall 1800 804 954. [honda.com.au/cars](http://honda.com.au/cars)

The specifications and major features listed herein are accurate as at the date of printing (April 2012/11YM). However, Honda Australia Pty. Ltd. reserve the right to change or modify specifications and major features at any time without prior notice. Due to ordering, shipping and freight factors, some colour and model availabilities may vary from time to time. Check with your Honda Dealer for current information on availability. Automatic transmission available for an extra cost. Only Genuine Honda Accessories are made to fit Honda vehicles. For a Genuine Honda Accessory brochure contact your Honda Dealer or Honda Australia on 1800 804 954. The fuel consumption figures quoted in this brochure are based on ADR81/02 test results. You may experience different results depending on driving conditions and the condition of the vehicle. Honda warranties apply where due care is exercised by the owner and the vehicle is maintained in accordance with the vehicle's owners manual. Please refer to Honda's warranty documentation for exclusions and conditions. Honda Australia Pty. Ltd. recommends careful examination of all official Honda warranty documentation before purchasing. This brochure is printed on Revive Pure Silk 100% Recycled is Certified Carbon Neutral and FSC 100% Recycled. The pulp used is Process Chlorine Free and is manufactured by an ISO 14001 certified mill. CR-V Luxury model shown on cover.

HON 8933



# The Dream: To create the EUU that fits more into life





## A world of possibilities.

Options. Never have there been so many. Hop into your CR-V and head to the circus, enjoy an evening at the opera or get rowdy at the rodeo. Do you take the surfboard, the snowboard, perhaps the ironing board?

Whatever you have planned, the CR-V will feel right at home. And so will you in its well-furnished, spacious interior. Blessed with rugged good looks, the CR-V can handle anything. And its handling is unlike anything

you've ever experienced. There are three models to choose from - the CR-V, CR-V Sport and CR-V Luxury - all offering functionality, fun and freedom. Eenie meenie minie moe, pick a spot and the CR-V is sure to go.



## Ready for any occasion.

Whether taking to the runway, freeway or driveway, the CR-V likes to look its best. Its refined bodyline and attractive accents speak volumes. Chic headlights scream

style; a big, curvy trunk whispers "Ooh la la", and the side window design begs you to get in. Bigger, beefier, bossier bumpers enhance its bold nature. And nothing says fearless

adventurer like the integrated front grille, masculine lower body details and 17" rims. All CR-V models are handsomely equipped with alloy wheels and rear park assist.

# JUST



## The fun starts here.

A 2.4 litre DOHC i-VTEC engine serves 125kW of power and a generous order of 218Nm of torque too. And compliments to the chef for creating a fuel efficient engine. Its drive by wire system offers a big helping hand by allowing the engine to frequently talk with the transmission. This open communication allows for smooth sailing.

The CR-V is available in a 6-speed manual transmission, or a 5-speed automatic transmission with Grade Logic Control. This unique system holds and extends the range of the gear when going uphill or down, which other automatic vehicles can struggle to do. This avoids gear hunting, giving you a much smoother ride.



CR-V Sport model shown.



## An unforgettable performance.

No matter how many times you ride in a CR-V, the excitement never wears off. The streaks of light zooming past your window. The anticipation of what you'll see next. But what really gets people coming back for more is the drive.

The CR-V is a born performer. A low centre of gravity, wide stance and broad wheel treads will have you throwing roses and applauding for more. The finely tuned suspension systems hit all the right notes by improving steering ability, braking and ride comfort. And when the road gets a little

tricky, never fear, Real Time 4WD system is here. It's a clever little contraption that instantly delivers extra torque to the back wheels when you need it. Vehicle Stability Assist (VSA) will also keep a watchful eye on brake pressure and power delivered by the engine. So when acceleration, cornering and emergency manoeuvres are called for, the CR-V is a true professional, keeping its poise and staying under control.



CR-V model shown with automatic transmission.



## It's what's on the inside that counts.

The CR-V's interior is as cosy as your favourite jeans, and as lavish as a penthouse suite. Air conditioning and power windows? Check! Bluetooth® phone connectivity\*? Got that. Cruise control and steering wheel-mounted audio controls? Yep, all here. 24 hour room service? Not yet.

The CR-V's instrument panel has two large, self-illuminating gauges and a central LCD panel so you can tune in and keep a watchful eye on important information, like how many kilometres before you need to make a pit stop and fill up. As for that stunning hotel view, the Sport and Luxury models have an electric sunroof. Plus, dual zone climate control.

The cabin is super quiet, but the CD player and speakers aren't. In the CR-V you'll find a CD tuner with MP3. In the CR-V Sport and the CR-V Luxury, a 6 CD tuner with MP3, and tweeters for your speakers. Mood lighting is also taken care of with blue ambient LED lights with backlit switches.

\*The Bluetooth word mark is owned by the Bluetooth SIG, Inc. and use of such mark by Honda is under licence. Please check the list of compatible phones at [honda.com.au/bluetooth](http://honda.com.au/bluetooth)



## What to do today?

In the CR-V the world is your oyster, and the flexibility to take just about anything and anyone is the delicious tangy vinaigrette on top.

The seats fold down any which way you please so you can fit all your luggage, your bicycle, a bed head or good friend, Fred. The rear passenger doors open wide and say "Ah" for easy access. And the lowered sill height means you can trapeze in and out as you please. But you don't have to be

a contortionist to get comfy in the CR-V. All your limbs have ample room, especially your legs, whether you're in the front seat or back.

The Sport and Luxury models have a removable double-deck cargo shelf so you can organise your things, your way. All models also feature a main console box that can hold 6.5 litres of whatever you wish.



CR-V Sport model shown.





## Have a safe journey.

No matter where you are or what you're doing, staying safe is the CR-V's top priority.

The CR-V is equipped with Honda's G-force Control (G-Con) technology, which creates a protective cage around you, your passengers and your possessions. The Advanced Compatibility Engineering (ACE) body structure features collapsible body sections that absorb and disperse the impact of a collision to help protect the cabin.

Anti-lock Brakes (ABS) team up with Electronic Brake-force Distribution (EBD) to improve braking stability and performance and to prevent rear-end steering. Traction Control ensures that your every move is a safe one. And VSA detects instability in slippery conditions both during cornering and under braking.

Other safety features include three-point seatbelts, front seatbelt pre-tensioners and load limiters, and active front head restraints. Plus dual front and side

SRS airbags and full-length curtain airbags are standard on all models.

The CR-V even has pedestrian safety in mind, with bonnet hinges that compress upon impact, energy-absorbing wiper pivots and an unobstructed area between the bonnet and engine.



## Your very own support crew.

What makes every journey in a CR-V just that little bit better is Honda's after-sales service. The team at Honda who look after you and your CR-V are constantly updating their knowledge to build upon their factory training. That's why no one can do a quality job like they can.

They also stock plenty of Genuine Honda Parts and Accessories so you don't have to settle for anything less. Remember to give your CR-V a regular checkup to keep it in prime, Grade A condition and maintain its value.

Honda also provides you with a three year/100,000km warranty, which also includes a six year rust perforation warranty\*. This is just a little something you can expect with every Honda. On top of all this, you'll even get a five year subscription to *Honda. The Magazine* and access to the after-

sales website, HondaONE, for up-to-date service history, personalised service reminders and vehicle maintenance tips.

\*Honda warranties apply where due care is exercised by the owner and the vehicle is maintained in accordance with the vehicle's owners manual. Please refer to Honda's warranty documentation for exclusions and conditions.



Dreams do come true.



### What if we tested our new technologies in the most extreme conditions possible?

At Honda we have always believed that racing is fundamental to our development. It's the ultimate testing ground and regardless of whether we win or lose, the same question is always asked – how can we improve performance? And you can be sure that for every improvement made on the track, there is an equal improvement made to every Honda vehicle that hits the road.

### What if our technology was more... alive?

ASIMO, the World's Most Advanced Humanoid Robot, was born from a dream to create a robot that could benefit people in everyday life. His name stands for Advanced Step in Innovative MObility, a title he's definitely worthy of. Currently ASIMO's capabilities include: running at 6 km/h, walking on uneven surfaces, turning smoothly, climbing stairs, pushing a cart, receiving and delivering trays and he can even dance a little boogie if the occasion calls for it. Our dream is that one day, everyone will have an ASIMO of their own to help around the home or office.



### What if we had our own solar cell production company?

In recent times Honda has branched out into mass solar cell production. Honda's unique C.I.G.S. solar cell produces the highest level of conversion efficiency in the thin film category and only requires half the energy to manufacture, so it's more environmentally friendly throughout its entire life. Why does a vehicle company produce solar cells? Purely so we know that we are doing everything possible to help prevent global warming.



### What if a plane had its engines mounted on top of the wing?

Well, it would be original and it would be called the HondaJet. Secondly, the engines would have to be in a special position on the wing we call 'The Sweet Spot'. That would then result in less drag at high speeds, 30% better fuel economy and because there is no need for structural engine mounts on the fuselage, 30% more cabin space.



### What if there was a car that only emitted water?

Obviously the world would be a better place and the good news is, such a car already exists: the Honda FCX Clarity. It works by converting hydrogen into electricity, which leaves you with only one emission, H<sub>2</sub>O. And in 2008, this totally new fuel-cell vehicle went into production.

### Colour options.

Before you can choose where to take your new CR-V, you'll have to try and choose a colour for it.



Alabaster Silver Metallic<sup>^</sup>



Crystal Black Pearlescent<sup>^</sup>



Habanero Red Pearlescent<sup>^</sup>



Sparkle Grey Pearlescent<sup>^</sup>



Taffeta White



Urban Titanium Metallic<sup>^</sup>

<sup>^</sup>Metallic and Pearlescent paint additional cost.

# CR-V Specifications.

DESCRIPTION	CR-V	CR-V SPORT	CR-V LUXURY
<b>POWERTRAIN</b>			
Engine	Inline 4 Cylinder DOHC i-VTEC	Inline 4 Cylinder DOHC i-VTEC	Inline 4 Cylinder DOHC i-VTEC
Capacity	2.4 litre - 2354 cc	2.4 litre - 2354 cc	2.4 litre - 2354 cc
Maximum power	125 kW @ 5800 rpm	125 kW @ 5800 rpm	125 kW @ 5800 rpm
Maximum torque	218 Nm @ 4200 rpm	218 Nm @ 4200 rpm	218 Nm @ 4200 rpm
Compression ratio	9.3	9.3	9.3
Bore x stroke (mm)	87 x 99.0	87 x 99.0	87 x 99.0
Emission standard	Euro 4	Euro 4	Euro 4
CO2 emissions (g/km)	- manual 237 - automatic 237	237 237	237
Manual transmission	6-speed	6-speed	-
Automatic transmission	5-speed with Grade Logic Control	5-speed with Grade Logic Control	5-speed with Grade Logic Control
Fuel type	Unleaded (RON91)	Unleaded (RON91)	Unleaded (RON91)
Fuel supply system	Honda Programmed Fuel Injection (PGM-FI)	Honda Programmed Fuel Injection (PGM-FI)	Honda Programmed Fuel Injection (PGM-FI)
<b>Fuel consumption combined (litres/100km)*</b>			
- manual	10.0	10.0	-
- automatic	10.0	10.0	10.0
<b>Fuel consumption urban (litres/100km)*</b>			
- manual	13.2	13.2	-
- automatic	13.4	13.4	13.4
<b>Fuel consumption extra urban (litres/100km)*</b>			
- manual	8.2	8.2	-
- automatic	8.0	8.0	8.0
Real Time 4WD system	✓	✓	✓
Drive By Wire throttle (DBW)	✓	✓	✓
<b>CHASSIS</b>			
Body type	Monocoque	Monocoque	Monocoque
Front suspension	MacPherson strut	MacPherson strut	MacPherson strut
Rear suspension	Multi-link Double Wishbone	Multi-link Double Wishbone	Multi-link Double Wishbone
Power steering	✓	✓	✓
Stabiliser bars	Front and rear	Front and rear	Front and rear
Front brakes	Ventilated disc	Ventilated disc	Ventilated disc
Rear brakes	Solid disc	Solid disc	Solid disc
<b>EXTERIOR</b>			
Door handles	Black	Body coloured	Body coloured
Front fog lights	■	✓	✓
Headlights	Halogen	Halogen	Halogen
- auto on/off	✓	✓	✓
Keyless entry	✓	✓	✓
Power door mirrors	- body coloured with turn indicators ✓	✓	✓
Sunroof	■	Electric	Electric
Towbar	■	■	■
Wipers	- front 2-speed and intermittent - rear ✓	Variable intermittent ✓	Auto variable intermittent with rain sensor ✓
<b>INTERIOR</b>			
Accessory power outlet (12v)	Front and rear	Front and rear	Front and rear
Air conditioning	✓	Dual zone climate control	Dual zone climate control
Cargo restraint hook	✓	✓	✓
Centre console	✓	✓	✓
Central locking	✓	✓	✓
Comprehensive interior illumination	✓	✓	✓
Conversation mirror	-	✓	✓
Cruise control	✓	✓	✓
Cup-holders	- number of cup-holders 6 - number of bottle holders 4	6 4	6 4
Digital clock (in radio)	✓	✓	✓
Door pockets	Front	Front	Front
Double-deck cargo shelf	■	✓	✓
Driver lumbar support	-	✓	✓
Driver's footrest	✓	✓	✓
Dust and pollen filter	■	■	■
Front seat adjustment	- manual Driver and Passenger - 8 way power adjustment	Driver and Passenger -	Passenger Driver
Front seat arm rest	✓	✓	✓
Grab rail	✓	✓	✓
Head restraints	- adjustable 5	5	5
Heated front seat (2 stage - Hi/Lo)	-	✓	✓
Lights-on warning	✓	✓	✓
Low fuel warning	✓	✓	✓
Luggage cover	■	✓	✓
Multi-information display	- instant fuel economy ✓ - average fuel economy ✓ - distance to empty ✓ - outside temperature display ✓ - trip meter ✓	✓ ✓ ✓ ✓ ✓ ✓ ✓	✓ ✓ ✓ ✓ ✓ ✓ ✓
Power windows	✓ - auto up/down Driver	✓ Driver	✓ Driver
Rear seat centre arm rest	✓	✓	✓
Rear seat heating ventilation	✓	✓	✓
Seat back pocket	Driver and front passenger	Driver and front passenger	Driver and front passenger
Seat trim material	Cloth	Cloth	Leather <sup>†</sup>
Seats	- front Fully reclining - rear 40/20/40 split fold and slide	Fully reclining 40/20/40 split fold and slide	Fully reclining 40/20/40 split fold and slide
Seatbelt height adjuster	Front	Front	Front
Steering column	Tilt and telescopic adjustment	Tilt and telescopic adjustment	Tilt and telescopic adjustment
Steering wheel	Urethane	Urethane	Leather wrapped
Sunglasses box (at roof console)	✓	✓	✓
Ticket/card holder (driver only)	✓	✓	✓
Upper and lower glove compartment	✓	✓	✓
Vanity mirror	Driver and front passenger	Driver and front passenger	Driver and front passenger
Windows	Heat absorbing	Heat absorbing	Heat absorbing

# CR-V Specifications.

DESCRIPTION	CR-V	CR-V SPORT	CR-V LUXURY
<b>SAFETY FEATURES</b>			
Active headrest	Driver and front passenger	Driver and front passenger	Driver and front passenger
Airbags SRS	- front Driver and front passenger - side with OPDS Driver and front passenger - curtain Full length	Driver and front passenger Driver and front passenger Driver and front passenger Full length	Driver and front passenger Driver and front passenger Driver and front passenger Full length
Anti-lock Braking System (ABS)	✓	✓	✓
Child proof rear door locks	✓	✓	✓
Child safety seat anchorages	3	3	3
Electronic Brake-force Distribution (EBD)	✓	✓	✓
Hazard warning lights	✓	✓	✓
High mounted brake light	✓	✓	✓
Honda G-Con technology	✓	✓	✓
Immobiliser system	✓	✓	✓
Progressive crumple zones	Front and rear	Front and rear	Front and rear
Rear park assist	✓	✓	✓
Rear view mirror	Day/night	Day/night	Day/night
Seatbelt pretensioners	Front seating positions	Front seating positions	Front seating positions
Seatbelt reminder light	Driver	Driver	Driver
Seatbelts - 3 point ELR	Front seating positions	Front seating positions	Front seating positions
Seatbelts - 3 point ELR/ALR	Rear seating positions	Rear seating positions	Rear seating positions
Security alarm system	✓	✓	✓
Steering column	Energy absorbing	Energy absorbing	Energy absorbing
Transmission shift lock	Auto only	Auto only	Auto only
Vehicle Stability Assist (VSA) with Traction Control System (TCS)	✓	✓	✓
Windscreen	Laminated	Laminated	Laminated
<b>DIMENSIONS</b>			
Overall length (mm)	4565	4565	4565
Overall width (mm)	1820	1820	1820
Overall height (mm)	1680	1680	1680
Wheelbase (mm)	2620	2620	2620
Track (mm)	- front 1565 - rear 1565	1565 1565	1565 1565
Ground clearance (mm)	- non-load 185	185	185
Kerb weight (kg)	- manual 1580 - automatic 1610	1585 1615	- 1630
Maximum permissible weight (kg)	- manual 2040 - automatic 2070	2040 2070	- 2070
Fuel tank capacity (litres)	58	58	58
<b>Maximum towing capacity (kg)</b>			
- trailer with brakes	- manual 1200 (single axle) 1500 (twin axle)	1200 (single axle) 1500 (twin axle)	- -
- automatic	1200 (single axle) 1500 (twin axle)	1200 (single axle) 1500 (twin axle)	1200 (single axle) 1500 (twin axle)
- trailer without brakes	- manual 600 - automatic 600	600 600	- 600
- down force/tongue load	120 (single axle with brakes) 150 (twin axle with brakes) 60 (without brakes)	120 (single axle with brakes) 150 (twin axle with brakes) 60 (without brakes)	120 (single axle with brakes) 150 (twin axle with brakes) 60 (without brakes)
Seating capacity	5	5	5
Turning radius at wheel center (metres)	5.5	5.5	5.5
<b>TYRES AND WHEELS</b>			
Wheel size	17 x 6.5 J	17 x 6.5 J	17 x 6.5 J
Tyre size	225/65 R17	225/65 R17	225/65 R17
Wheel type	Alloy	Alloy	Alloy
Spare wheel type	Full size alloy	Full size alloy	Full size alloy
<b>AUDIO</b>			
AM/FM radio, CD with MP3 and WMA	✓	-	-
AM/FM radio, 6 CD tuner with MP3 and WMA	-	✓	✓
Antenna	Micro	Micro	Micro
Auxiliary jack	✓	✓	✓
Bluetooth <sup>®</sup> phone connectivity*	✓	✓	✓
Speakers	- front door 2 - rear door 2	2 2	2 2
Tweeters	- front 2	2	2
Speed-sensitive Volume Compensation (SVC)	✓	✓	✓
Steering wheel mounted audio controls	✓	✓	✓
<b>COLOUR GUIDE</b>			
Alabaster Silver Metallic <sup>^</sup>	INTERIOR Black	INTERIOR Black	INTERIOR Black
Crystal Black Pearlescent <sup>^</sup>	Black	Black	Black
Habanero Red Pearlescent <sup>^</sup>	Black	Black	Black
Sparkle Grey Pearlescent <sup>^</sup>	Black	Black	Black
Taffeta White	Black	Black	Black
Urban Titanium Metallic <sup>^</sup>	Black	Black	Black

✓ Standard equipment. ■ Optional. - Not available. <sup>†</sup> Leather includes some PVC vinyl material. <sup>\*</sup> The Bluetooth<sup>®</sup> word mark is owned by the Bluetooth SIG, Inc. and use of such mark by Honda is under licence. Please check the list of compatible phones at [honda.com.au/bluetooth](http://honda.com.au/bluetooth) <sup>^</sup> Metallic and Pearlescent paint additional cost. <sup>\*</sup> The fuel consumption figures quoted in this brochure are based on ADR81/02 test results.