

Sorento MY22 - Mechanical & Feature List

Engines	3.5L Petrol	2.2L Diesel	1.6L T-Petrol PHEV
Engine type	SmartStream V6 DOHC MPI D-CVVT ¹	SmartStream In-line 4 cyl. E-VGT ² CRDI ³ 16 valve	SmartStream In-line 4 cyl. DOHC T-GDI ⁴ D-CVVT ¹ /CVVD ⁵ 16 valve
Capacity (cc)	3,470	2,151	1,598
Max. power (kW @ rpm) (Combined)	200 @ 6,300	148 @ 3,800	132 @ 5,500 (192)
Max. torque (Nm @ rpm) (Combined)	332 @ 5,000	440 @ 1,750 - 2,750	265 @ 1,500 - 4,500 (350)
Hybrid Type	-	-	Transmission Mounted Electric Device
Model Variant	S, Sport, Sport+, GT-Line	S, Sport, Sport+, GT-Line	GT-Line
On Board Charger (OBC) - kW	-	-	AC single-phase charging up to 3.3kW
AC Charge 15-95% - with a 3.3kW EVSE Charger	-	-	3hr 25min ⁶
Transmission			
6 speed automatic (Sports-matic) with Active AWD (Part-time with lock mode)	-	-	-
8 speed automatic (Sports-matic) with 2WD (Front Wheel Drive)	-	-	-
8 speed Dual Clutch Transmission (Wet-type) with Active AWD (Part-time with lock mode)	-	-	-
Dimensions			
Overall length / width / height with roof rails (mm)	4,810 / 1,900 / 1,700		-
Wheelbase / minimum ground clearance (mm)	2,815 / 176		-
Luggage space 2 / 5 / 7 seats up (L, VDA)	2,011 / 616 / 187		1,988 / 604 / 175
Fuel			
Pure Electric Range (km) / Energy Consumption (Wh/km)	-		68 / 161 (WLTP) ⁷
Fuel consumption (L/100km) - Combined / Urban / Extra-urban ⁸	9.7 / 13.7 / 7.5		6.1 / 7.4 / 5.3
Fuel type recommended ⁹	Regular unleaded		Diesel
Fuel tank capacity (L)	67		Regular unleaded
Wheels & Tyres			
Wheel type / size	S Alloy 17"	Sport Alloy 18" (Machine Finish)	Sport+ Alloy 19" (Machine Finish)
Tyres	235/65 R17 Continental	235/60 R18 Continental	235/55 R19 Goodyear
Spare wheel type	Full size alloy	Full size alloy	Full size alloy
Active Safety¹²			
ABS (Anti-lock Braking System) with EBD ¹³ & BA ¹⁴	-	-	-
Front & reverse parking sensors with dash display	-	-	-
Rear view camera with in-audio screen display & dynamic parking guidelines	-	-	-
BCA (Blind Spot Collision Avoidance Assist)	-	-	-
RCCA (Rear Cross Traffic Collision Avoidance Assist)	-	-	-
LKA (Lane Keeping Assist) with LCA (Lane Change Assist) and LFA (Lane Following Assist)	-	-	-
AEB (Autonomous Emergency Brake) with FCWS (Forward Collision Warning System) - Car, Pedestrian, Cyclist & Junction	-	-	-
BVM (Blind Spot View Monitor)	-	-	-
PCA (Parking Collision Avoidance Assist - Reverse) with 360° camera view	-	-	-
Interior Features			
Smart one touch flat folding 2nd row seats (60:40)	-	-	-
Split fold flat 3rd row seats (50:50)	-	-	-
ASCC (Advanced Smart Cruise Control) with steering wheel mounted controls	-	-	-
Embossed Cloth seats	-	-	-
8 x cup holders (2 x front, 4 x 2nd row & 2 x 3rd row)	-	-	-
MP3 compatible audio player with AM/FM tuner and DAB Digital Radio	-	-	-
USB input with multimedia connectivity and Bluetooth ¹⁵ Multi-connection functionality (phone/media stream) ¹⁶	-	-	-
2nd row vents (behind centre console)	-	-	-
4.2" colour TFT Supervision instrument cluster with 3 theme selection	-	-	-
Wired Android Auto ¹⁷ with voice recognition	-	-	-
Wired Apple CarPlay ¹⁷ with voice recognition	-	-	-
Wireless ¹⁸ Android Auto ¹⁶ with voice recognition	-	-	-
Wireless ¹⁹ Apple CarPlay ¹⁷ with voice recognition	-	-	-
1st row USB chargers (3 x front console)	-	-	-
2nd row USB chargers (2 x behind 1st row seats & 1 x behind centre console)	1 x behind centre console only	1 x behind centre console only	-
6 speaker audio system (front door, rear door, front dash & front tweeters)	-	-	-
6-way driver's seat incl. height adjust (pumping device)	-	-	-
8" colour LCD touch screen	-	-	-
10-way power driver's seat (including 2-way lumbar support)	-	-	-
10.25" colour LCD touch screen	-	-	-
Dual-zone climate control air-conditioning (3-stage)	-	-	-
3rd row fan control & vents	-	-	-
3rd row USB chargers (2 x cargo area)	-	-	-
Leather appointed ²⁰ seats	-	-	-
Quilted Nappa Leather appointed ²⁰ seats	-	-	-
14-way power driver's seat (including 4-way lumbar support and cushion extension)	-	-	-
Integrated Memory System driver's seat with 2 seating position memory	-	-	-
12.3" colour TFT LCD Supervision cluster with 4 theme selection	-	-	-
Interior Mood Lighting (up to 64 colours)	-	-	-
Wireless phone fast charging (Qi) ²¹	-	-	-
12 speaker BOSE ²² premium sound system	-	-	-
Driver Talk in-car intercom	-	-	-

For full specifications list visit www.kia.com/au/cars/sorento/features.html

• Standard - Not available

Features



Hands-Free Smart Power Tailgate (Sport+, GT-Line)



Bluetooth® Multi-Connect Functionality²³



BOSE® Premium Sound System (GT-Line)



Interior Mood Lighting (GT-Line)



Panoramic Sunroof (GT-Line)



Lane Following Assist¹²



360° Camera View (GT-Line)

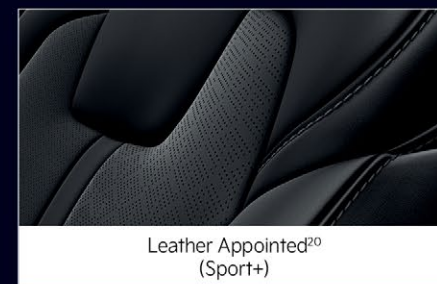


12.3" Colour TFT LCD Supervision Cluster (GT-Line)

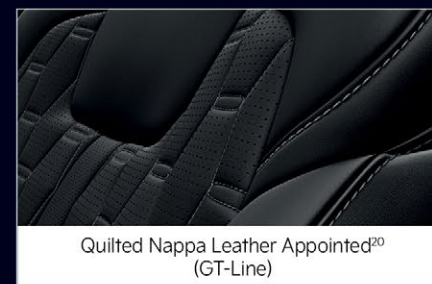
Interior Colours



Embossed Cloth (S, Sport)



Leather Appointed²⁰ (Sport+)



Quilted Nappa Leather Appointed²⁰ (GT-Line)

Exterior Colours



Wheels



For full terms and conditions, visit www.kia.com/au. Kia Australia ABN 97 110 483 353 Locked Bag 2207, North Ryde BC NSW 1670. Specifications apply to 2022 Model Year Sorento. Kia Australia reserves the right to discontinue or change the models, features, specifications, options, designs and prices of products referred to in this sheet without incurring any liability whatsoever to any purchaser or prospective purchaser of any such products. Some of the items herein are optional at additional cost. Consult your Kia dealer for the latest information on models, specifications, features, prices, options and availability. Note: As of 14th September 2021, GT-Line PHEV grade has undergone all necessary inspections by the Kia Australia Product Planning team. S, Sport, Sport+, GT-Line Petrol and GT-Line Diesel grades will undergo all necessary inspections when available. Until inspections are complete, all information and illustrations are based on data available at the time of publication and subject to change without notice. ¹DOHC - Dual Overhead Cam. ²MPI - Multi-Point Injection. ³D-CVVT - Dual Continuous Variable Valve Timing. ⁴E-VGT - Electronically Managed Variable Geometry Turbocharger. ⁵CRDI - Common-Rail Direct Injection. ⁶T-GDI - Turbo - Gasoline Direct Injection. ⁷CVVD - Continuously Variable Valve Duration. ⁸Figure based on WLTP (Worldwide Harmonised Light-Duty Vehicles Test Procedure) static laboratory combined average city and highway cycle test, which measure, energy consumption, range and emissions in passenger vehicles, designed to provide figures closer to real-world driving behaviour. Real life driving results will vary depending on a combination of driving style, type of journey, vehicle configuration, battery age and condition, use of vehicle features (such as heating and air conditioning), as well as operating, environmental and climate conditions. ⁹Charging times are based on HQ testing and actual charge times will be dependent on charging conditions, including home charging type and condition, battery temperature as well as ambient temperature. Before using this product at home, consult with a licensed electrician to ensure your home electrical system can support the use. ¹⁰ADR81/02. ¹¹TE10 Compatible. ¹²Safety technologies are supplemental systems and do not replace the need for the driver to exercise care and attention. ¹³EBD - Electronic Brake Distribution. ¹⁴BA - Brake Assist. ¹⁵Not all mobile phones will be compatible with the vehicle's Bluetooth¹⁵ and multimedia system. ¹⁶Android Auto¹⁶ is a registered trademark of Google Inc. Android Auto¹⁶ connectivity requires compatible Android device. See android.com/intl/en_au/ for more details. ¹⁷Apple CarPlay¹⁷ connectivity requires compatible iOS device. See apple.com/au/ for more details. Apple CarPlay¹⁷ is a registered trademark of Apple Inc. ¹⁸Wireless Android Auto¹⁸ function requires compatible smartphone and also supports wired connectivity. ¹⁹Wireless Apple CarPlay¹⁹ function requires compatible smartphone and does not support wired connectivity. ²⁰Android Auto²⁰ connectivity requires compatible Android device. See android.com/intl/en_au/ for more details. Android Auto²⁰ is a registered trademark of Google Inc. ²¹Leather appointed seats may comprise of genuine leather, polyurethane and other man-made materials or a combination thereof. ²²Wireless charging compatible with phones featuring Qi technology or adapter. BOSE is a registered trademark of Bose Corporation. ²³Premium paint at additional cost. ²⁴The Road Traffic Code 2000 in WA prohibits people from driving a vehicle unless a person is behind the steering wheel and they have full control over the vehicle. The use of this Remote Smart Park Assist (RSPA) feature will not comply with this rule and thus it should not be used while within WA. For full terms and conditions on Kia's 7 Year warranty, visit kia.com/au



Kia Australia Pty Ltd ABN 97 110 483 353
Locked Bag 2207, North Ryde BC NSW 1670
Phone 131 KIA (131 542)
kia.com/au



Sorento

Model Year 2022

Part Number: MSHMQ422311. Printing date February 2022. KIA338



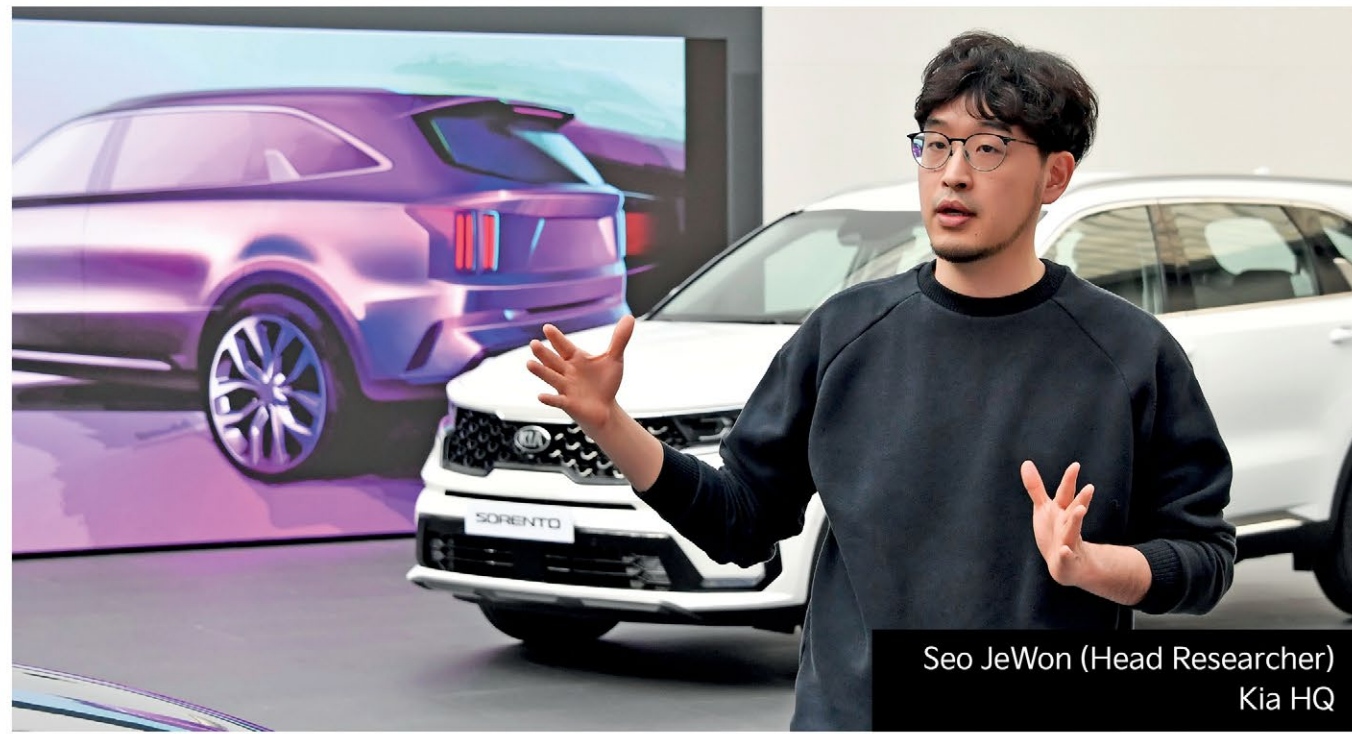
GT-Line Diesel Shown

Sorento

A large SUV that puts the focus firmly on family and luxury. The Kia Sorento is more spacious, more versatile, with class-leading innovations wrapped in finely tailored style. It's not only the most high-tech Kia car ever made, but also leads the way in SUV design.

"refined boldness"

We wanted to make the new Sorento look strong and firm at the front, but slender and sleek from the side. The side character line did all the magic. Traditional SUVs have a strong-looking, box-like back for its horizontal character lines. The character line of Sorento, however, looks arch-like, just like that of sedans. This makes the overall look sleek, despite the angles all over the body. The concept of refined boldness inspired our designers, who sought to maintain the robust, tough-looking aesthetic of earlier generations of Sorento, while applying a greater degree of refinement and elegance and a sense of sportiness.



Specification



1- A segment first, the Remote Smart Parking Assist²³ lets the user start the vehicle remotely with the key fob, allowing the driver to control forward and backward movement of the Sorento. Perfect for getting in or out of a tight parking space or garage. (Available on GT-Line Petrol & Diesel only).



2- Rear Cross Traffic Collision Avoidance Assist (RCCA)¹² - helps reduce the risk of collision by monitoring the traffic behind you. The system will warn you of a potential incident, and apply the brakes for you if a collision is about to occur.



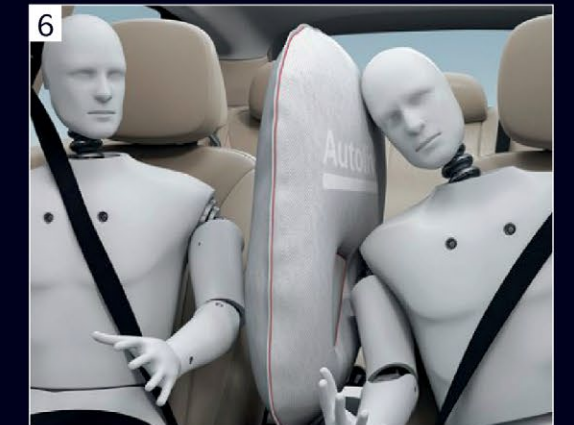
3- Multi Collision Braking (MCB)¹² - The system engages braking when the airbag is deployed during a primary collision to mitigate a secondary collision. A driver cannot always react fast enough themselves, which is why the MCB system is so important in an emergency situation.



4- Transport your passengers safely with class leading safety tech. The Blind Spot View Monitor⁷ activates as you turn your indicator on ready to change lanes, acting as another pair of eyes on the road to safely merge, showing a live camera feed on your dash gauge cluster in HD clarity.



5- Designed to monitor and detect vehicles or vulnerable road users travelling ahead of you, the Autonomous Emergency Braking system automatically applies the brakes if it determines a crash⁷ is imminent, helping to avoid a frontal collision. The Junction Assist function will help avoid a collision with an oncoming vehicle in an adjacent lane when turning right at an intersection.



6- Centre Collision Airbag - A segment first, the front centre side airbag is built into the left side of the driver's seat and deploys during a side impact to minimise the chance of head clash between the two front seat occupants.