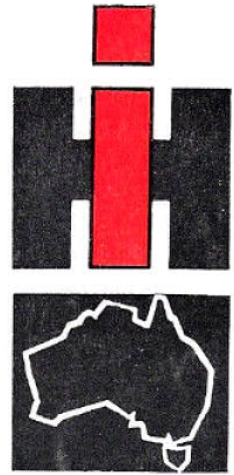
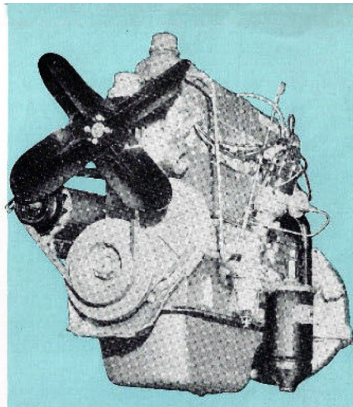


**INTERNATIONAL**  
**AB LINE**  
**MOTOR TRUCKS**  
MODELS AB-150 AND AB-151



**Australia's most complete truck range**

**THE POWER  
YOU WANT IS THE  
POWER YOU GET  
WITH INTERNATIONAL  
ALL-TRUCK ENGINES**



**POWERFUL AGD-240 ENGINE**

AB-150 and AB-151 medium-duty trucks have the reserve horsepower, chassis, brakes and suspension to more than match their carrying capacities.

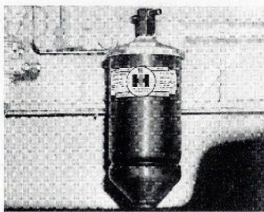
Both units are powered by the new Australian Gold Diamond engine, the AGD-240. This engine delivers just the right amount of responsive power to enable economical operation with light or heavy loads.

The AGD-240 incorporates the latest engineering advances and features a full-flow oil filter system, oil bath air cleaner of improved efficiency, an increased capacity water pump and rotor coil inlet valves for efficient operation.

You can be sure of years of service as, from initial casting to completed engine, all components are of highest quality, tested and proved in every step of manufacture.

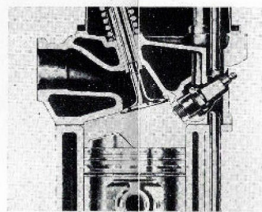
**FULL-FLOW FILTER**

The oil system is designed so that all the oil delivered to the engine must first pass through a filter. This system increases engine life as it prevents damaging abrasives and hard carbon particles from getting into the engine bearings.



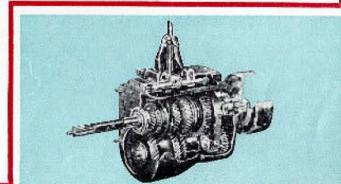
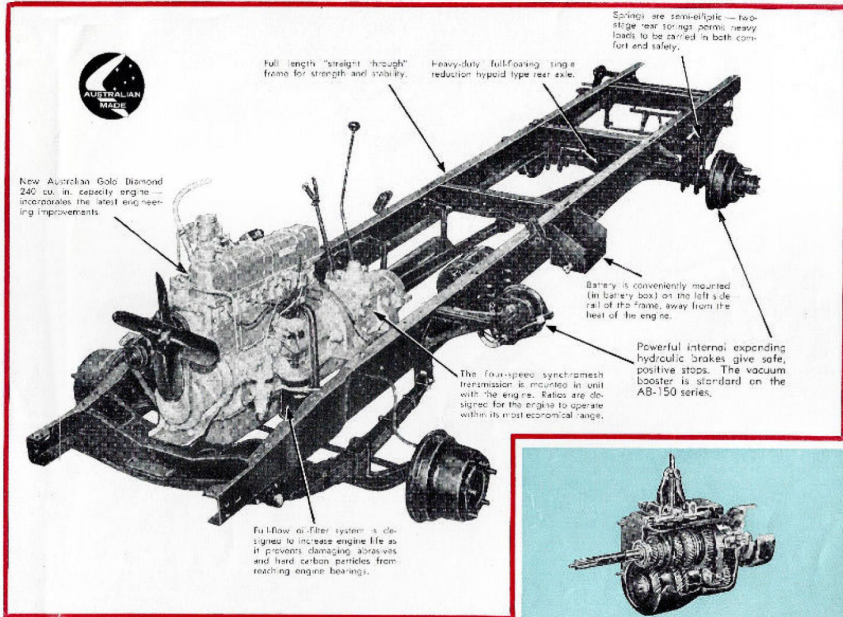
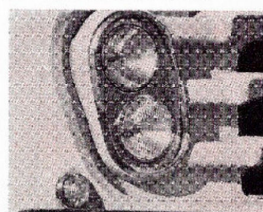
**TILT VALVES**

New combustion chambers are scientifically designed for ignition to take place near the centre of the gas mass. This keeps temperatures lower, and in turn reduces the possibility of pre-ignition and increases valve life.



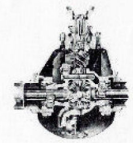
**NEW HEADLIGHTS**

An exciting new innovation in headlight styling is the all new sealed-beam, diagonally set, dual headlights. It gives safer driving through increased visibility, yet when dipped only two beams provide a better low-beam pattern that reduces glare to a minimum.



**TRANSMISSION**

The proved four-speed transmission has ratios designed for the engine to operate within its most economical range. There's an extra-low first gear for starting with heavy loads or for more power starting on hills. Synchromesh gears are smooth and easy to operate.



**HYPOID AXLE**

Full-floating, single-reduction, hypoid type rear axle has great load-carrying capacity. Strong housing cover, welded to eliminate gasket leaks, provides differential bearing support. Four differential gears on spider pin mounting spread power and load evenly with low tooth stress.

**NEW CAB COMFORT**

Right from opening the wide door and sitting behind the safety-steering wheel, you'll realise everything in this cab has been designed for your comfort, safety and convenience.

There's the safe, all-steel cab. You sit on new, non-sag vinyl seats. The quick-release hand-brake is within easy reach; suspended pedals require light pressure to operate and gear changing is a smooth, easy operation.

The stylish, down-swept bonnet combined with wrap-around windscreen gives unexcelled visibility, while the self-parking dual wipers clear a large area of the Full-Vision windscreen when it's raining.





## AB-150 SERIES - VERSATILE LOAD CARRIERS

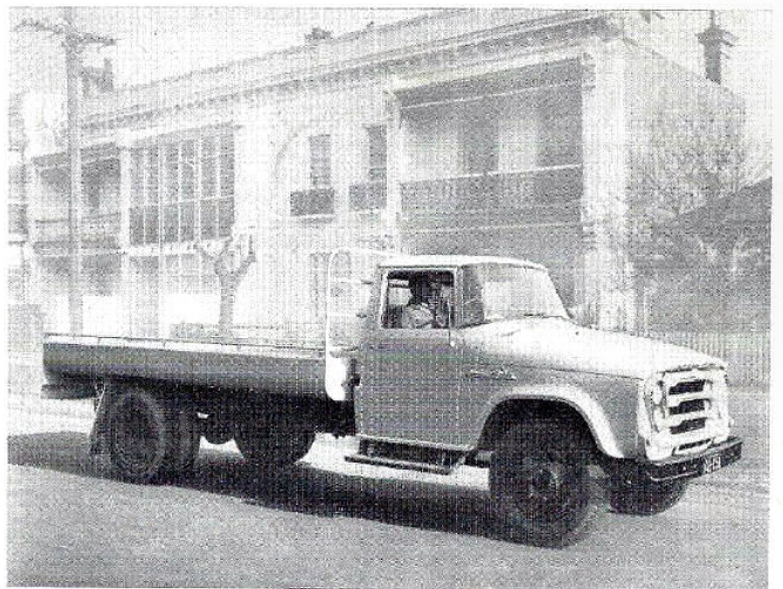
The new AB-150 series of motor trucks have been designed for economical operation with loads up to 4 tons, and have the power to carry these loads with the speed and acceleration to make your carrying profitable.

Versatility is the keynote of these trucks. The AB-150 model has 17" wheels to give a low loading height for a truck of its size. Height to the top of the chassis frame (unladen), is only 31½ inches.

The AB-151 with its 20" wheels takes a 12' 6" tray body on the 153 in. wheelbase and 14' 6" tray body on the long 171 in. wheelbase.

Both the AB-150 and AB-151 have straight frame chassis designed to carry heavy loads. With this big load-carrying feature goes safety. Wheels are of the strong pressed steel disc-type and powerful, self-energising, vacuum boosted hydraulic brakes give safe, positive stops.

If you move furniture or vegetables, groceries or livestock, refrigerators or poultry, television sets or hay, you'll be interested in the new AB-150 series of International trucks.



AB-150 series trucks are ideal for either farm or industry. They feature heavy-duty front and rear axles and have straight frame chassis designed to carry heavy loads.

Specifications subject to change without notice, illustrations may include non-standard items.

INTERNATIONAL HARVESTER COMPANY OF AUSTRALIA PTY. LTD. ★ (INCORPORATED IN VICTORIA)  
DISTRICT SALES OFFICES IN CAPITAL CITIES. WORKS: DANDENONG, GEELONG AND PORT MELBOURNE, VICTORIA



**Your Dealer:**