



*QUALITY  
ALL THE  
WAY*

# INTERNATIONAL MOTOR TRUCKS

MODELS R-192 AND RD-192





# ESSENTIAL INFORMATION R-192 AND RD-192

## weight ratings

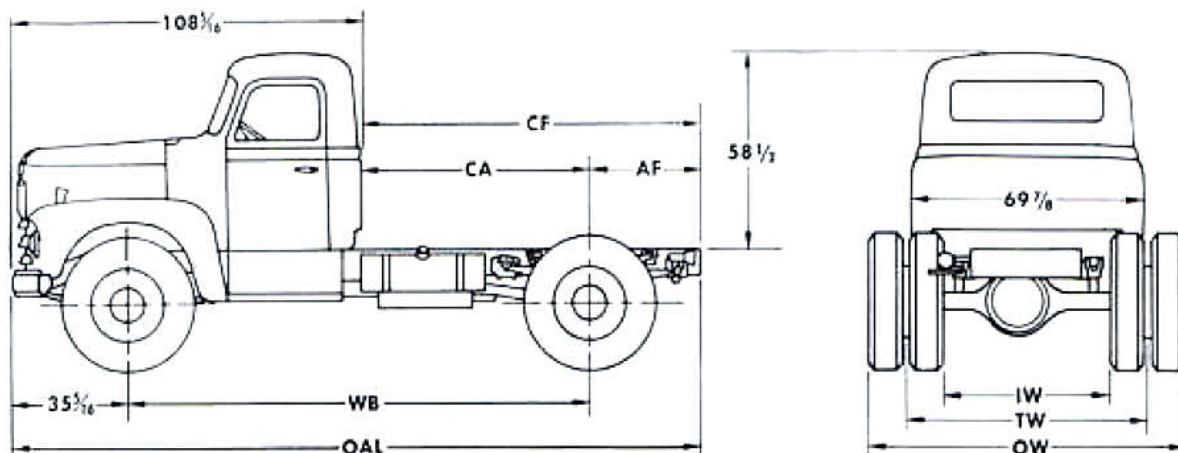
Wheelbase, inches	157	175
Gross vehicle weight, lb. (10.00-20, 12 ply tyres)	25,000	25,000
Gross combination weight, lb. (10.00-20, 12 ply tyres)	51,000	51,000
Payload, inc. body weight (truck with cab), lb. (10.00-20, 12 ply tyres)	16,915	16,845
Cab and chassis weight, lb.:		
Front axle	R-192 4,255	4,310
Rear axle	R-192 3,830	3,845
Total	8,085	8,155
Front axle	RD-192 5,250	5,305
Rear axle	RD-192 3,830	3,845
Total	9,080	9,150
Axle capacities, lb.:		
Front axle	7,500	7,500
Rear axle	18,500	18,500

## chassis dimensions, inches

Wheelbase	(WB)	157	175
Overall length including bumper	(OAL)	248 5/16	272 5/16
Back of cab to rear axle	(CA)	84	102
Rear axle to end of frame	(AF)	56	62
Frame length from back of cab	(CF)	140	164
Bumper to front axle	(BA)	35 5/16	35 5/16
Bumper to back of cab	(BC)	108 5/16	108 5/16
Height to top of chassis frame, 10.00-20 tyres:			
Front loaded	(FH)	32 7/8	34 1/4
Rear loaded	(RH)	31 7/8	35
Rear empty	(RH)	35 1/4	38 1/4

### Road clearance, 10.00-20 tyres:

Front axle	(FC)	11 3/16	11 3/16
Rear axle	(RC)	9 9/16	9 9/16
Overall width	(OW)	95 7/16	95 7/16
Tread:			
Front wheels	(TW)	69 13/16	69 13/16
Rear wheels	(TW)	72	72
Inside width	(IW)	48 9/16	48 9/16
Turning radius, ft.:			
To centre line of tyre		26 1/2	29
With bumper clearance		28	31



## standard specifications

**FRAME:** Pressed steel channel. Centre section — 9" x 3 1/2" x 1/4". Rear section — 142 in., 137 in. w.b. 5 9/16" x 3 1/2" x 1/4"; 175 in., 193 in. w.b. 9" x 3 1/2" x 1/4".

**ENGINE, R-192:** International RD-406. Six-cylinder valve-in-head type. Bore 4 3/8", stroke 4 1/2", displacement 405.9 cu. in., compression ratio 6.75 to 1. Horsepower — R.A.C. rating 45.9, max. brake 175 @ 3,200 r.p.m. Max. torque 338 lb. ft. @ 1,700 r.p.m. Semi-mechanical governor set at 2,750 r.p.m. Pressure feed lubrication. 12-volt electrical system, 37 amp. AC alternator. Centrifugal-type double V-belt driven water pump. Downdraft type carburettor, 25 3/4 gallon fuel tank.

**ENGINE, RD-192:** Cummins C-160. Six-cylinder four-cycle diesel with wet cylinder liners. Bore 4 7/16", stroke 5", displacement 464 cu. in., compression ratio 15.8 to 1. Horsepower — R.A.C. rating 47.2, max. brake 160 @ 2,500 r.p.m. Max. torque 376 lb. ft. @ 1,400 r.p.m. Mechanical Ryball governor. Pressure feed lubrication. 12-volt electrical system, 55 amp. AC generator. Centrifugal-type water pump. P.T.-type fuel system, 25 3/4 gallon fuel tank.

**LIGHTS:** Sealed beam headlights. Parking lights located below headlights.

**CLUTCH:** Single plate, cushion disc-type with vibration damper of 10 coil-springs, 13 3/8" diameter, effective area 201.86 sq. in.

**TRANSMISSION, R-192:** Constant mesh except first, second and reverse. Five speeds forward, ratios — 8.03, 4.61, 2.46, 1.41 and 1.00 to 1. One reverse speed, ratio 8.00 to 1. Large P.T.O. openings at right and left sides.

**TRANSMISSION, RD-192:** Constant mesh except first, second and reverse. Five speeds forward, ratios — 8.08, 4.67, 2.62, 1.69 and 1.00 to 1. One reverse speed, ratio 8.12 to 1. Large P.T.O. openings at right and left sides.

**PROPELLER SHAFT:** Dynamically balanced, heavy-gauge steel tubing. Needle bearing, anti-friction universal joints.

**AXLE, FRONT:** Forged, heat-treated, drop-centred I-beam. Steering knuckles of drop-forged, heat-treated, nickel-chrome-molybdenum steel.

**AXLE, REAR:** Full floating, two-speed, electric shift spiral bevel type. Four pinion planetary reduction gears. Hotchkiss drive. Chrome-molybdenum-steel axle shafts. Heat-treated, one-piece tubular banjo-type steel housing. Pinion straddle mounted. Ratios 6.5/8.84 to 1.

**BRAKES, HAND:** Internal expanding drum-type, on propeller shaft. Lining area 56 sq. in.

**BRAKES, SERVICE, R-192:** Hydraulic—vacuum booster. Individual twin-type wheel cylinders. Oil-bath vacuum-line air cleaner. Total effective lining area 555.5 sq. in.

**BRAKES, SERVICE, RD-192:** Air, 12 cu. ft. compressor, 2,490 cu. in. air tank. Total effective lining area 525.1 sq. in.

**SPRINGS:** Semi-elliptic. Front 52" x 3". Rear 54" x 3". Auxiliary 36" x 3".

**STEERING:** Semi-reversible cam and roller-mounted twin-lever gear, 20" diam. steering wheel.

**WHEELS:** Cast-spoke type.

**TYRES:** 10.00-20, 12 ply, duals rear.

**CONTROLS:** Throttle, tachometer, speedo, light and choke controls on instrument panel. Accelerator, clutch and service brakes pedal operated. Hand brake and gear lever operated from centre of driving compartment. Two-speed change control mounted near top of gear lever.

**STANDARD EQUIPMENT:** Chassis and cab, front bumper, spare wheel, tool kit unit and jack.

**FINISH:** Frame, wheels, bumper and external step, black. Choice of six colours on fenders, hood and cab.

### OPTIONAL EQUIPMENT:

**Wheelbases:** 142" and 193".

**Air Brakes:** Total effective area 525.1 sq. in. (R-192 only). Semi or four wheel trailer connections. Hand control valve. Front axle limiting valve.

**Transmission:** For RD-192 only. Five speeds forward — 8.08, 4.67, 2.62, 1.38 and 1.00 to 1. Two reverse speeds, 4.74 and 8.12 to 1.

**Cab:** Cowl with windscreen and header panel. Cowl with windscreen, header panel and doors.

In order that product improvements may be introduced at any time, the right is reserved to change specifications without notice. Illustrations shown may include non-standard items.

INTERNATIONAL HARVESTER COMPANY OF AUSTRALIA PTY. LTD. ★ (INCORPORATED IN VICTORIA)

DISTRICT SALES OFFICES IN CAPITAL CITIES. WORKS: DANDENONG, GEELONG AND PORT MELBOURNE, VICTORIA