



Das Auto.

Volkswagen Polo



The Volkswagen Philosophy.

Innovation. Responsibility. Value. At Volkswagen we pride ourselves on this set of beliefs. So when you make the Volkswagen choice you can be assured that you have chosen a car with this creed at the very core of its inception, its development, and its realisation.

At Volkswagen we have combined the power of innovation with exceptional design to deliver a superior driving experience. Superb technologies such as our new low emission TSI petrol and TDI diesel engines not only offer an enhanced driving experience, but significantly reduce both carbon emissions and fuel consumption.

Responsible, efficient environmental considerations such as this not only save you money, but ultimately the planet's precious resources, and is just one example of the many commitments that Volkswagen has made to reduce its carbon footprint.

We are proud of the reputation we have earned for value. A Volkswagen vehicle offers safety, reliability and comfort, making it outstanding value for money. With trusted and timeless German engineering our models are the perfect vehicles for you and your family.





Polo Comfortline model shown with optional Sport Package.



Polo Comfortline model shown with optional Sport Package.



Polo.

Smart. Sexy. Stylish. You can see it all, with just one glance at the Polo. It's a car that's a class above its class. Styled to endure. Engineered to last. With impressive levels of safety as standard and an exciting range of engines, Polo is the small car with big car credentials. Built with Volkswagen's legendary reputation for quality, reliability and safety. Polo is the car for now. And the car for the future.



WORLD CAR OF THE YEAR
WORLD CAR AWARDS





Design.

Take a look at the Polo. With its strong horizontal lines and athletic shape, it exudes confidence. From the smart stylish lines and finishes to the precision surfaces, this car oozes urban appeal and contemporary quality.

Precise, clean and uncluttered lines dominate the Polo's exterior design. The grille and sleekly shaped headlights emphasise the width, enhancing the car's low centre of gravity. The body-coloured bumpers sit over the large black lower intake grille, giving the Polo a purposeful and determined stance.

From the side, strongly defined lines and sills connect the sculptured wheel arches. While its shoulder line emphasises its clearly masculine appearance. Pronounced side skirts and streamlined side mirrors make a bold statement and enhance its aerodynamic performance.

The wide track look of the Polo extends to its rear. Distinctive tail lights sit high in the Polo's broad shoulder, reinforcing the impression of solidity. Along its top edge is an integrated roof spoiler, while the tailgate extends right down to the body-coloured bumper.



Technology.

Volkswagen's constant aspiration for excellence means that affordable innovative technology is at your fingertips in every model within our product range. With technical expertise and the power of innovation, Volkswagen brings moving ideas to the road.

TSI Technology. A miracle of performance.

TSI describes Volkswagen's twin or single-charged petrol engines with direct injection. This innovative engineering has created high tech engines boasting excellent torque and power output, combined with lower fuel consumption and emissions.

The Polo TSI engines are innovative 1.2 and 1.4 litre units that save petrol while delivering impressive power and performance thanks to the turbocharger and direct petrol injection. From the driver's seat, all you feel is one continuous, exhilarating surge as it produces high torque at low revs and an abundance of power. It's as economical as many engines with half as much power.

TDI Technology

Volkswagen's cutting-edge TDI engines with Diesel Particulate Filters feature Common Rail technology – injecting precise amounts of fuel at exceedingly high pressure. The result is a cleaner burning engine with exceptional fuel economy, impressive torque and compelling performance.





Direct Shift Gearbox (DSG)



DSG is a new and advanced 7-speed transmission in which the clutch and gearshift are controlled electronically. What makes DSG unique is that the next gear is already pre-selected and awaiting power to be transferred, resulting in a gear change that takes only 3-4 hundredths of a second. The benefits are virtually no interruption to power, traction or acceleration, and additional flexibility. Furthermore, because it ensures optimum transmission of the engine power, DSG provides excellent fuel consumption and driving satisfaction.

Hill-Start Assist

Hill-start assist holds the vehicle stationary for 1.5 seconds on hills with an incline greater than 5 percent, when the foot brake is released, by temporarily locking the brake pressure. This intelligent feature provides a comfortable hill start, which importantly avoids any rolling back.

Safety.

At Volkswagen, safety has always been as important to us, as it is to you. And so you will find both active and passive safety systems throughout the Polo. This is a car created with your personal safety foremost in our minds.

It all starts with the Polo's rigid body structure. Its lightweight construction is reinforced with hardened steel, creating a solid passenger cell that gives occupants maximum protection in an accident. Surrounding you are body panels that crumple on impact, absorbing the energy of the impact and giving you maximum protection.

In an accident, the Polo's safety features will work together to protect you. Depending on the severity of the impact, front seat belt tensioners will hold you firmly, while up to six airbags will deploy to cushion you from harm. Even after the event, the Polo's intelligent safety systems keep working to protect you, automatically activating the hazard warning lights, unlocking the doors, switching on the interior lights and deactivating the fuel pump. Pedestrians will also be safer when you drive a Polo. The deformable bonnet has been designed to minimise injuries in the event of a collision.

Active Safety – Everything designed to help prevent accidents from happening.

Anti-lock Braking System (ABS)

When braking, wheel speed sensors measure the road wheel speed and should one or more wheels start to lock the ABS system reduces brake pressure to that wheel. This prevents the wheels from locking during heavy or emergency braking, enabling the vehicle to remain steerable.

Anti Slip Regulation (ASR)

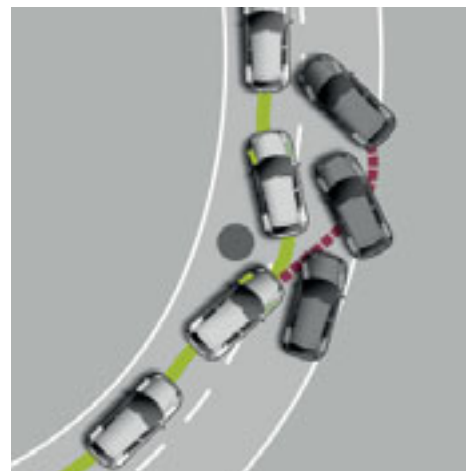
ASR is a switchable traction control system that prevents the wheels from spinning under acceleration by intervening in the engine management system and reducing engine torque when necessary.

Brake Assist

During emergency braking, Brake Assist aids the driver by increasing the brake pressure automatically to a level exceeding the locking limit. The ABS is thus quickly brought into the operating range, which enables maximum vehicle deceleration to be achieved.

Electronic Differential Lock (EDL)

EDL improves driving and steering characteristics when accelerating on road surfaces where each wheel has a different degree of traction. The system operates automatically and is combined with the ABS system. Using the ABS wheel sensors, EDL monitors the speed of the individual driving wheels. When one wheel starts to spin due to differences in road surfaces, the system brakes the spinning wheel, transferring engine power to the wheel with the best traction.



Electronic Stabilisation Program (ESP)

ESP helps ensure that the vehicle goes where you steer it, even in extreme driving conditions. The ESP system constantly compares the actual movement of the vehicle with carefully pre-determined values. Should a situation arise in which the vehicle starts to skid, ESP will apply the brakes to individual wheels and automatically adjust the engine's power output to correct the problem. It also minimizes the likelihood of spinning off on a curve due to understeering or oversteering.



Passive Safety – Design measures taken to protect the occupants of vehicles from injury, or to reduce the risk of injury.

Crumple Zones

Front and rear crumple zones absorb the energy of an impact and divert the resulting forces away from the secure passenger safety cell.

Safety Optimised Head Restraints

Safety Optimised Head Restraints on the front seats are optimally positioned and specially contoured to help reduce whiplash injuries. In the event of an accident, excellent protection is achieved via the seatback controlling upper body movements, and this is balanced with head movements being controlled via the head restraints.

Airbags

Six airbags (twin front, side and curtain) are standard features. Airbags combine with the seat belts to help reduce the risk of severe head and chest injuries in collisions. When inflated, airbags cushion the head and upper body and distribute the resulting loads over as large an area as possible.

Seatbelts

Front seat passenger seatbelts are equipped with belt pre-tensioners and belt force limiters. Belt tensioners tighten the seatbelt on impact, pulling it closer to the occupant's body, ideally positioning them for airbag inflation. Belt force limiters reduce seat belt forces on front seat occupants and, in conjunction with belt tensioners and airbags, lessen the risk of upper body injuries. Three-point seatbelts are fitted to all seats, and three child seat anchor points are fitted in the rear.



Alcantara/leatherette upholstery shown is an optional extra. 17"Boavista alloy wheels shown are optional extras.

Interior.

The Polo's interior has been designed to cushion you in comfort and provide everything that you and your passengers will need at your fingertips. From the moment you slip into the driver's seat, you will appreciate the quality of the exquisite interior finish and high level of appointments.

The cabin is whisper quiet, enabling you to focus on the creature comforts that surround you. Striking white illumination emanates from behind the sculptured 3-spoke steering wheel, making it both easy on the eye and easy to read in all lighting conditions. Plug your favourite MP3 player into the auxiliary input socket or enjoy the RCD310 radio with MP3 compatibility and 6 speakers. The Polo's spacious cabin accommodates five adults with ease. 60/40 split folding rear seats fold to create a level cargo floor in the luggage area, for those extra long items.

The Polo's centre console angles towards the driver for maximum ergonomic comfort. Dashboard surfaces are sumptuous and soft to the touch. While chrome trims bring a new level of refinement to the Comfortline's air vents.

Enjoy the sensation of taking hold of the sculptural 3-spoke steering wheel and gear knob and take comfort in the heat-insulated glass. Even serve your passengers a cool drink from the chillable glove compartment, with front and rear cup holders abound.





Comfortline interior shown with optional Comfort Package.



Polo Comfortline model shown with optional Sport Package.



The Polo Range.

From the distinctive style of the Trendline, to the feel and finesse of the Comfortline, and the uncompromising performance of the GTI, the Polo range has been designed to suit every taste. With a choice of petrol engines including Volkswagen's renowned TSI direct injection petrol technology or the TDI Common Rail turbo diesel engine, coupled with either a manual or Volkswagen's unique Direct Shift Gearbox (DSG) transmission, they deliver an exhilarating ride with impressive fuel efficiency.

Setting a new standard in the light car class, each model in the Polo range combines striking design and uncompromising quality. Active safety systems include Electronic Stabilisation Program (ESP) and an Anti-lock Braking System (ABS) with Brake Assist. Passive safety is also considered with six airbags and front safety optimised head restraints as standard.

Comfort and convenience are at your fingertips via the RCD310 radio system with 6-speaker stereo and MP3 compatibility, air conditioning and an auxiliary input socket for external audio devices such as an MP3 player. All are included in the standard list of specifications. While remote central locking, integrated indicators in the door mirrors and front power windows complete the package.

Enjoy the great outdoors when you're inside your Polo, with the optional panoramic electric glass sunroof. This one piece roof system offers an electric tilt and sliding functionality, so you can open it a little bit or a lot. And to protect you from the extremes of nature, there's also an integrated wind deflector (so it doesn't get too breezy) and a sunblind to block the sun's rays.

*Available on the Polo 77TSI Comfortline, Polo 66TDI Comfortline and the Polo GTI.



Trendline. Distinctive quality with innovative technology in a highly impressive package.

The 3-door Polo Trendline boasts an impressive package of standard features, including the RCD310 radio system with MP3 compatibility, remote central locking, front power windows, air-conditioning and an auxiliary input socket for external audio devices such as an MP3 player. Its 1.4 litre petrol engine delivers 63kW of power and 132Nm of torque, yet boasting a combined fuel consumption of just 6.0L/100km.* The Trendline comes with your choice of a 5-speed manual or optional 7-speed automatic DSG transmission and a list of standard safety features that has seen it awarded a 5-star ANCAP safety rating – including no less than six airbags, Electronic Stabilisation Program (ESP), ABS brakes with Brake Assist, Electronic Differential Lock (EDL) and Anti-Slip Regulation (ASR) traction control.

*7-speed DSG, as per Australian Design Rule (ADR) 81/02.



This vehicle has been awarded a maximum 5 Star Rating by ANCAP.







Polo Comfortline model shown with optional Sport Package.



77TSI Comfortline. Arresting finesse and efficient performance.

The 77TSI Comfortline emanates style and surrounds you with a new level of standard features. Slide into the cloth seating, grip the multi-function leather steering wheel and take a look at the multi-function display, giving you everything you need to know at a glance. Reach out and feel the soft touch dash and enjoy the convenience of cruise control plus the comfort of a front centre armrest. The 77TSI Comfortline features a 1.2 litre TSI petrol engine delivering 77kW of power and 175Nm of torque yet boasting a combined fuel consumption of just 5.5L/100km.* It comes with your choice of a 6-speed manual or optional 7-speed DSG automatic transmission and an impressive list of standard safety features, that has seen it awarded a 5-star ANCAP safety rating – including no less than six airbags, Electronic Stabilisation Program (ESP), ABS brakes with Brake Assist, Electronic Differential Lock (EDL) and Anti-Slip Regulation (ASR) traction control.

*As per Australian Design Rule (ADR) 81/02.



This vehicle has been awarded a maximum 5 Star Rating by ANCAP.



Stylish 15" Lakeside alloy wheels are standard on the 77TSI and 66TDI Comfortline models.

66TDI Comfortline. Impressive torque performance with remarkable efficiency.

The 66TDI Comfortline doesn't compromise on style and features for its great fuel economy. It boasts details like chrome interior highlights, multi-function leather steering wheel, distinctive headlight design, front and rear power windows and an adjustable boot floor height. The 1.6 litre Common Rail turbo diesel engine fitted with a diesel particulate filter delivers 66kW of power with an impressive 230Nm of torque and a combined fuel consumption as low as 4.6L/100km.* It also comes with your choice of a 5-speed manual or optional 7-speed DSG automatic transmission and an impressive list of standard safety features that has seen it awarded a 5-star ANCAP safety rating - including no less than six airbags, Electronic Stabilisation Program (ESP), ABS brakes with Brake Assist, Electronic Differential Lock (EDL) and Anti-Slip Regulation (ASR) traction control.

*7-speed DSG, as per Australian Design Rule (ADR) 81/02.



This vehicle has been awarded a maximum 5 Star Rating by ANCAP.





Polo Comfortline model shown with optional Sport Package.



GTI model shown with optional Bi-Xenon headlights



GTI. Powerful performance meets precision handling.

With its trademark performance and rail-like handling, this latest addition to the Polo range will not disappoint. The 1.4 litre, twin-charged TSI engine boasts a whopping 132kW of pure power, complemented by a smooth automatic 7-speed Direct Shift Gearbox (DSG) as standard, for effortless gear shifting. But great power now comes with even greater control, thanks to the unparalleled grip and handling afforded by the Extended Electronic Differential Lock (XDL) technology. Applying hydraulic pressure to the wheel on the inside of a corner to prevent slipping or understeering, XDL means you can be confident taking on even the sharpest of corners. What's more, optional Bi-Xenon headlights provide improved illumination when driving and come with stylish and distinct LED daytime driving lights. And of course, the legendary GTI honeycomb grill, red-stitched flat-bottomed 3-spoke leather steering wheel, front and rear disc brakes with signature red callipers and sleek, Jacky tartan sport seat upholstery, 17" Denver alloy wheel and front fog lights all come standard. As does the unique exhilaration of driving one of the world's hottest hatches.



GTI interior with Comfort package shown.

Optional Equipment.

Alcantara/leatherette upholstery with heated front sports seats ⓐ ⓑ

An optional Alcantara/leatherette seating package with heated front sports seats.



Bi-Xenon headlights ⓑ

The GTI model gives you the option of innovative Bi-Xenon headlights which come with stylish LED daytime driving lights and static cornering lights. Bi-Xenon headlights provide brighter and clearer illumination of the road ahead offering drivers an improved field of vision.



ⓐ Available for Comfortline models. ⓑ Available for GTI model.



Anti-theft Alarm System

The Polo's anti-theft alarm system monitors the vehicle's interior and has a warning horn that operates independently of the car's own electrical system and a time-controlled alarm that sounds in response to the unauthorised opening of a door. Locking the car primes the alarm, unlocking the car turns it off. There's also a tilt sensor that detects when attempts to tow the vehicle occur.



Volkswagen Audio Package.

RCD510 Audio System [C] [G]

The RCD510 audio system features a high resolution large colour TFT display with touch screen operation, a 6-disc CD changer with MP3 compatibility as well as an SD memory card slot.

Media Device Interface (MDI) [C] [G]

This sophisticated new interface facilitates connection to USB audio devices, data storage devices and Apple iPod®*. The MDI allows audio files to be operated via the in-dash audio system without the need to input controls via the media device itself. The MDI system also provides a charging function.

* iPod® is a registered trademark of Apple Inc.

Panoramic Sunroof [C] [G]

The panoramic sunroof system offers an electric tilt and sliding functionality to open it a little, or a lot. The sunroof system also features an integrated wind deflector as well as a sunblind.



[G] Available for GTI model. [C] Available for Comfortline models.

Optional Comfort Packages available for Trendline, Comfortline and GTI.

Multi-Function Leather Steering Wheel



The redesigned, leather covered 3-spoke Multi-Function steering wheel is one of many creature comforts that make every drive pleasurable.

Rain Sensing Wipers

The Polo's rain sensor automatically regulates the windscreen wipers' intermittent wipe intervals according to the intensity of the rain. The benefits of the rain sensor are comfort and safety. The driver is able to concentrate fully on the road, without having to worry about adjusting the wipe interval.

Low Tyre Pressure Indicator



The low tyre pressure indicator permanently monitors the tyres, ensuring a high level of safety, and helps the driver to keep a check on tyre pressure. Correct tyre pressure helps to extend the service life of tyres and reduces fuel consumption.



Multi-Function Display



The Multi-Function Display informs the driver of trip time and length, speed, fuel consumption and distance till empty.



Automatic Climate Control Air Conditioning

Automatic climate control air conditioning provides luxurious comfort in every season.



Front Centre Armrest



The optional front centre armrest with practical storage compartment adds functionality to the Polo Trendline.



Automatically Dimming Rear-view Mirror

Volkswagen's automatically dimming rear-view mirror prevents dangerous rear-approaching headlight glare from disturbing your vision and reduces eye strain and driver fatigue.



Cruise Control



The cruise control system is an electronic aid which helps to regulate the vehicle's speed. It provides the driver with greater comfort on long journeys where a constant speed is maintained. It also makes it easier to obey the speed limit.

Optional Sport Package available for Comfortline.

Dark Tinted Rear Side and Rear Windows

Dark tinted rear side and rear windows provide increased privacy and comfort.

Sports Suspension

The Sports Package adds sports suspension to Comfortline models for a more engaging driving experience.

Low Tyre Pressure Indicator


The low tyre pressure indicator permanently monitors the tyres, ensuring a high level of safety, and helps the driver to keep a check on tyre pressure. Correct tyre pressure helps to extend the service life of tyres and reduces fuel consumption.



17" Boavista Alloy Wheels

Stylish 17" Boavista Alloy Wheels add charisma to the Comfortline.



 Standard on GTI model.



Front Fog Lights [G]

Front Fog lights with static cornering function add a sporty element and an additional safety feature.

[G] Standard for GTI model.

Volkswagen Genuine Accessories®.

Movement fascinates. In fact, there are few subjects that excite people more, that's because movement is synonymous with freedom. Our comprehensive range of genuine accessories give you the freedom to customise the look and feel of your vehicle to reflect your own personality and individual sense of style.

The product philosophy is simple – to deliver innovative technologies and premium design – right down to the finest detail. Each and every genuine accessory has been designed specifically with the Polo in mind and has been engineered and rigorously tested to ensure that it meets the same high standards of quality as the vehicle itself.

No matter what you choose you can have peace of mind knowing that any genuine accessory fitted by your local Volkswagen Dealer, at the time of your vehicle purchase will be covered by the same warranty as the vehicle itself.

For more information or to experience the full range of genuine accessories designed to suit the Polo, visit your local Volkswagen Dealer.



Sports Body Kit



Roof Bars



Roof Bars & Bicycle Carrier*



Ski & Snowboard Holder*



Kayak Holder*



Ski & Luggage Box*



Surfboard Holder*



Carpet Floor Mats



Rubber Floor Mats



Door Sill Protective Strip^



Plastic Boot Tub with dividers

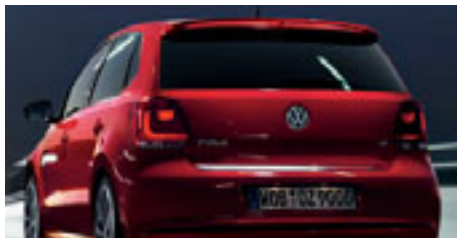


Boot liner



Boot Scuff Plate

* Images are for illustration purposes only. Overseas specification vehicles are shown, bicycle, kayak, skis, snowboard and sporting equipment not available for purchase from Volkswagen or its dealers. ^ Not applicable for GTI.



Roof Spoiler[^]



Mudflaps[^]



Sunblind's rear windows



Rear Chrome Trim



Satellite Navigation RNS510



MEDIA-IN



Towbar Kit[^]



Bluetooth® Kits



17" Motorsport Alloy Wheel[†] 
(Available in White, Black, Anthracite)



17" Motorsport Alloy Wheel[†]
(Available in Black, White, Anthracite)



16" Syenit Alloy Wheel^{†^}
(Available in Black, Anthracite)

[^] Not applicable for GTI model. [†] Please refer to models wheel placard for wheel size options.  Available on GTI model only.

Features and Specifications.

	<i>Trendline</i>	<i>77TSI Comfortline</i>	<i>66TDI Comfortline</i>	<i>GTI</i>
Safety and Security				
Airbags				
Driver and front passenger airbags	S	S	S	S
Driver and front passenger side airbags	S	S	S	S
Curtain airbags, front and rear	S	S	S	S
Anti-theft				
Electronic engine immobiliser	S	S	S	S
Alarm system with interior monitoring and tilt sensor	O	O	O	O
Security coded audio system	S	S	S	S
Visible Vehicle Identification Number (VIN)	S	S	S	S
Body				
Door side impact protection	S	S	S	S
Fully galvanised with 12 year anti-corrosion perforation warranty	S	S	S	S
Rigid safety cell with front and rear crumple zones	S	S	S	S
3 door hatch body style	S	–	–	S
5 door hatch body style	–	S	S	S
Brakes				
Anti-lock Braking System (ABS)	S	S	S	S
Brake Assist	S	S	S	S
Electronic Brake-pressure Distribution (EBD)	S	S	S	S
Hill Start Assist (HSA)	S	S	S	S
Red brake callipers	–	–	–	S
Entry/warning reflector in front and rear doors	S	S	S	S
First aid kit	A	A	A	A
Head restraints				
Front safety optimised head restraints, height adjustable	S	S	S	S
Rear adjustable and removable (3)	S	S	S	S
Lighting				
Daytime driving lights, halogen light integrated in main headlight	–	–	–	S
Front fog lights, mounted in lower bumper	–	–	–	S
Fog lamp, rear	S	S	S	S
Locking				
Remote central locking with deadlock mechanism (separate release for luggage compartment)	S	S	S	S
2 stage unlocking (programmable)	S	S	S	S
Automatic locking after takeoff (programmable)	S	S	S	S
One touch lock / unlock for driver	S	S	S	S
Child safety locks on rear doors	–	S	S	S
Fuel filler flap lock/unlock by remote, push to open	S	S	S	S
Luggage cover, removable	S	S	S	S
Seat belts				
Front height adjustable with pre-tensioners and belt force limiters	S	S	S	S
Visual and acoustic warning for driver and front seat passenger seat belts not fastened	S	S	S	S
3 point seat belts for all passengers	S	S	S	S
Child seat anchor points mounted on rear seat (3)	S	S	S	S
Traction control				
Electronic Differential Lock (EDL)	S	S	S	S
Extended Electronic Differential Lock (XDL)	–	–	–	S
Anti-Slip Regulation (ASR)	S	S	S	S
Electronic Stabilisation Program (ESP)	S	S	S	S

S Standard

O Optional extra

A Volkswagen Genuine Accessory (Dealer Fitted)

– Not available

Exterior Equipment / Styling

	Trendline	77TSI Comfortline	66TDI Comfortline	GTI
Body enhancements				
Body coloured bumper bars, door handles and exterior mirrors	S	S	S	S
Body coloured lower front spoiler and rear roof spoiler	-	-	-	S
Centre lower air intake and radiator grille with black honeycomb inserts	-	-	-	S
Dual exposed chrome exhaust tail pipes, left	-	-	-	S
Exposed exhaust tail pipe	S	S	S	-
Exterior mirror caps, carbon fibre look	A	A	A	A
Radiator grille highlight in chrome	-	S	S	-
Radiator grille with two red trim strips	-	-	-	S
Rear bumper with black diffuser	-	-	-	S
Side sill panel extensions in black finish	-	-	-	S
Rear tailgate trim, chrome	A	A	A	A
Sports body kit	A	A	A	-
Paint				
Metallic / Pearl Effect paint	O	O	O	O
Protection				
Bonnet protector	A	A	A	A
Headlight protectors	A	A	A	A
Loading sill protection	A	A	A	A
Mudflaps, front and rear	A	A	A	-
Slimline weather shields	A	A	A	A
Roof				
Roof bars	A	A	A	A
Bicycle, kayak, ski, surfboard and snowboard holders	A	A	A	A
Ski and luggage box	A	A	A	A
Suspension				
Sports suspension, lowered approximately 15mm	-	-	-	S
Tinted glass				
Heated insulating tinted glass	S	S	S	S
Towbar				
Towbar with 7-pin flat trailer connector and removable tongue	A	A	A	-
Wheels				
Steel wheels 14x5" with full wheel trims and 175/70 R14 tyres	S	-	-	-
Alloy wheels (Lakeside) 15x6" with 195/55 R15 tyres	-	S	S	-
Alloy wheels (Denver) 17x7" with 215/40 R17 tyres	-	-	-	S
Alloy wheels (various designs) 15", 16" and 17"	A	A	A	A
Please consult your Volkswagen Dealer for correct wheel and tyre fitment by model				
Anti-theft wheel bolts	A	S	S	S
Low tyre pressure indicator	-	-	-	S
Spare wheel, full size steel	S	S	S	-
Weight and space saving spare wheel	-	-	-	S
The spare wheel and tyre is speed restricted for the Comfortline and GTI models				

S Standard

O Optional extra

A Volkswagen Genuine Accessory (Dealer Fitted)

- Not available

Features and Specifications.

	<i>Trendline</i>	<i>77TSI Comfortline</i>	<i>66TDI Comfortline</i>	<i>GTI</i>
Comfort and Convenience				
Armrest				
Front centre armrest with storage compartment, height adjustable	–	S	S	S
Air conditioning				
Manual control with dust and pollen filter	S	S	S	S
Console				
Centre console with open storage compartment and 12 volt socket	S	S	S	S
Cruise control				
	–	S	S	S
Cup holder				
Front (2)	S	S	S	S
Rear (1)	S	S	S	S
Bottle holders in front door pockets	S	S	S	S
Floor mats				
Front and rear, carpet	A	A	A	S
Front and rear, rubber	A	A	A	A
Grab handles				
Soft folding at roof frame (4)	S	S	S	S
Headlights				
Halogen headlights with clear polycarbonate lens	S	–	–	–
Halogen twin headlights with clear polycarbonate lens	–	S	S	S
Daytime driving lights, integrated in main headlight	–	–	–	S
Bi-xenon headlights for high and low beam with static cornering lights, LED daytime driving lights, LED rear number plate light, automatic self levelling, headlight cleaning system and low washer fluid warning	–	–	–	O
Headlight-on warning buzzer	S	S	S	S
Internal headlight range adjustment	S	S	S	S
Combined headlight and fog light switch	S	S	S	S
In car entertainment and technology				
AM/FM security coded radio (RCD310) with MP3 compatible CD player	S	S	S	S
Audio functions mounted on steering wheel	–	S	S	S
Auxiliary input audio socket in front centre console	S	S	S	S
Bluetooth® hands free phone kit	A	A	A	A
Speakers, front (4) and rear (2)	S	S	S	S
Roof mounted antenna	S	S	S	S
Satellite navigation system (RNS510)				
High-resolution touch screen display in 16:9 format, 2D, topographical and 3D (bird's eye) map views, voice control for navigation and radio functions, integrated 30 GB hard drive for storing music and navigation data, SD card slot and single DVD drive for the playback of audio CD/MP3	A	A	A	A
Volkswagen audio package				
AM/FM security coded radio (RCD510) with 6½" touch screen display, MP3 compatible SD card slot and 6 disc CD changer, in dash	–	O	O	O
Media Device Interface (MDI), fitted in the glove compartment and supplied with USB connection cable				
Media Device Interface (MDI) connection cables for iPod®, mini USB and auxiliary input	A	A	A	A
Instrumentation				
Speedometer & tachometer, electronic odometer and tripmeter, service interval and outside temperature display, digital clock, low fuel warning light and white adjustable illumination	S	S	S	S
Digital fuel level indicator and high coolant temperature warning light	S	S	S	–
Fuel and coolant temperature gauges	–	–	–	S

S Standard

O Optional extra

A Volkswagen Genuine Accessory (Dealer Fitted)

– Not available

Comfort and Convenience cont.

	Trendline	77TSI Comfortline	66TDI Comfortline	GTI
Interior highlights				
Aluminium finish to accelerator and brake pedals	-	-	-	S
Aluminium finish door sill inlays with GTI logo	-	-	-	S
Black gloss finish to dashboard surrounding audio, air conditioning controls, air vents and headlight switch	-	-	-	S
Chrome highlights for parking brake lever knob, steering wheel, air vents, instruments, air conditioning and light switch surrounds	-	S	S	S
Door sill scuff plates	A	A	A	A
Gearshift knob in leather	-	S	S	S
Stainless steel pedal set (for manual transmission)	A	A	A	-
Interior lighting				
Interior light with time delay	S	S	S	S
Passenger reading lights, front (2) and rear (1)	-	S	S	S
Luggage compartment				
Cargo organiser, luggage area tub storage with internal dividers and lid	A	A	A	A
Load restraining hooks	S	S	S	S
Luggage compartment light	S	S	S	S
Luggage compartment protection: moulded foam, rubber or plastic tub	A	A	A	A
Luggage net	A	A	A	A
Variable luggage compartment floor level	S	S	S	-
Mirrors				
Electrically heated and adjustable exterior mirrors	S	S	S	S
LED turn indicators integrated in exterior mirrors	S	S	S	S
Parking distance sensors, rear				
	A	A	A	A
Power steering				
Electro-hydraulic, vehicle speed and steering input sensitive	S	S	S	S
Seating				
Comfort front seats	-	S	S	-
Top sports seats with additional side bolstering	-	-	-	S
Backrest release for front seats (3 Door)	S	-	-	-
Easy entry front seat backrest release function (3 Door)	-	-	-	S
Height adjustment for driver's seat	S	S	S	S
Height adjustment for front passenger's seat	-	S	S	S
Split folding rear seat backrest and seat base (60/40)	S	S	S	S
Steering wheel				
3 spoke leather rimmed multi-function steering wheel	-	S	S	-
3 spoke leather rimmed flat bottomed sports steering wheel with brushed aluminium insert and decorative stitching	-	-	-	S
Audio controls	-	S	S	S
Multi-Function Display controls	-	-	-	S
Gearshift paddles	-	-	-	S
Height and reach adjustable	S	S	S	S
Storage				
Trays (open) in centre console (2)	S	S	S	S
Front seat back storage pockets	-	S	S	S
Storage drawers under front seats	-	-	-	S
Chillable glove box	S	S	S	S
Front door pockets	S	S	S	S
Sunroof				
Panoramic glass sunroof Electrically slide and tilt adjustable Integrated wind deflector and sunblind	-	O	O	O

S Standard

O Optional extra

A Volkswagen Genuine Accessory (Dealer Fitted)

- Not available

Features and Specifications.

Comfort and Convenience cont.

	Trendline	77TSI Comfortline	66TDI Comfortline	GTI
Sun visors				
Driver and front passenger	S	S	S	S
Transmission				
Gearshift recommendation indicator (for manual transmission)	S	S	S	-
7 speed Direct Shift Gearbox (DSG) with Tiptronic function and Sport mode	O	O	O	S
Trip computer				
Multi-Function Display (MFD) – trip time, trip length, average and current speed, speed warning, average and current fuel consumption and distance till empty	-	S	S	S
Audio and MFD settings menus in addition to MFD functionality	-	-	-	S
Upholstery				
Cloth	S	-	-	-
Comfort cloth	-	S	S	-
'Jacky' sports cloth with decorative stitching	-	-	-	S
Headlining in black	-	-	-	S
Alcantara/leatherette combination seat upholstery with individually heated front sports seats and carpet floor mats, front and rear	-	O	O	O
The GTI top sport seats are replaced by sports seats with this upholstery option				
Vanity mirrors				
Driver's and passenger's side vanity mirrors	S	S	S	S
Illuminated on driver's and passenger's side	-	S	S	S
Windows				
Power front and rear (5 Door), with roll-back function and one-touch up-down	S	S	S	S
Remote operated convenience close and open feature	S	S	S	S
Sunblinds for rear side and rear window	A	A	A	A
Wipers				
2 speed with wash / wipe and intermittent wipe with 4 position delay	S	S	S	S
Rear window with wash / wipe and intermittent wipe	S	S	S	S
12V accessory socket in centre console	S	S	S	S

Optional Packages

Comfort package

Automatic climate control air conditioning				
Automatically dimming interior rear-view mirror				
Cruise control				
Front centre armrest with storage compartment, height adjustable				
Low tyre pressure indicator	O	-	-	-
Multi-Function Display (MFD)				
Multi-function leather steering wheel				
Rain sensing windscreen wipers				

Comfort package

Automatic climate control air conditioning				
Automatically dimming interior rear-view mirror				
Low tyre pressure indicator (standard for GTI)	-	O	O	O
Rain sensing windscreen wipers				

Sport package

Alloy Wheels (Boavista) 17x7" with 215/40 R17 tyres (4)				
Dark tinted rear side window and rear window glass, 65% light absorbing				
Front fog lights with static cornering function, mounted in lower bumper				
Low tyre pressure indicator	-	O	O	-
Lowered sports suspension				
The spare wheel and tyre is speed restricted in combination with the Sport package				

S Standard

O Optional extra

A Volkswagen Genuine Accessory (Dealer Fitted)

- Not available

Technical Specifications.

	<i>Trendline</i>		<i>77TSI Comfortline</i>		<i>66TDI Comfortline</i>		<i>GTI</i>
Engine	1.4 Litre		1.2 Litre		1.6 Litre		1.4 Litre
Type	4 cylinder inline petrol		4 cylinder inline direct injection turbo petrol		4 cylinder inline direct injection turbo diesel		4 cylinder inline Twincharger direct injection petrol
Installation	Front transverse		Front transverse		Front transverse		Front transverse
Cubic capacity, L/cc	1.4 / 1390		1.2 / 1197		1.6 / 1598		1.4 / 1390
Bore/stroke, mm	76.5 / 75.6		71.0 / 75.6		79.5 / 80.5		76.5 / 75.6
Max power, kW @ rpm	63 @ 5000		77 @ 5000		66 @ 4200		132 @ 6200
Max torque, Nm @ rpm	132 @ 3800		175 @ 1550-4100		230 @ 1500-2500		250 @ 2000-4500
Compression ratio	10.5:1		10:1		16.5:1		10:1
Fuel system	Magneti Marelli		Bosch Motronic		Simos common rail		Bosch Motronic
Ignition system	Electronic		Electronic		Compression		Electronic
Exhaust emission control	Exhaust gas recirculation, catalytic converter and lambda probes		Exhaust gas recirculation, catalytic converter and lambda probes		Exhaust gas recirculation with oxidising catalytic converter and diesel particulate filter		Exhaust gas recirculation, catalytic converter and lambda probes
Emission level [^]	EU 5 [^]		EU 5 [^]		EU 5 [^]		EU 5 [^]
Fuel type (Recommended)	Premium unleaded 95 RON		Premium unleaded 95 RON		Diesel 51CZ		Premium unleaded 98 RON
Transmission	5 speed manual	7 speed DSG	6 speed manual	7 speed DSG	5 speed manual	7 speed DSG	7 speed DSG
Driven wheels	Front wheel drive		Front wheel drive		Front wheel drive		Front wheel drive
Performance[#]							
0 – 100km/h, seconds	12.1	11.9	9.7	9.7	11.5	11.5	6.9
Fuel consumption[*]							
Combined, L/100km	6.1	6.0	5.5	5.5	4.7	4.6	6.1
Urban, L/100km	8.2	7.9	7.0	7.2	5.8	5.5	7.7
Extra Urban, L/100km	4.9	4.9	4.7	4.6	4.0	4.0	5.3
CO ₂ emission, g/km	142	140	128	128	124	121	142
Fuel tank capacity, litres	45	45	45	45	45	45	45
Running Gear							
Suspension							
Front axle	Independent suspension, MacPherson struts and coil springs. Sports suspension lowered approximately 15mm (GTI)						
Rear axle	Torsion beam axle, trailing arms, coil springs. Sports suspension lowered approximately 15mm (GTI)						
Steering	Electro-hydraulic power assisted rack & pinion steering						
Brake systems	Anti-lock Braking System (ABS) with Electronic Brake-pressure Distribution (EBD) and Brake Assist						
Brakes							
Front	Ventilated discs		Ventilated discs		Ventilated discs		Ventilated discs
Rear	Drums		Discs		Discs		Discs
Turning circle, m	10.6		10.6		10.6		10.6

[^] Emission level according to European Regulation (EC) No. 715/2007 and Regulation (EC) No. 692/2008.

[#] Please note figures are sourced from overseas data where equipment levels by model variant may vary.

^{*} Fuel consumption figures according to Australian Design Rule (ADR) 81/02.

The driving style, road and traffic conditions, environmental influences, fitment of accessories and vehicle condition can in practice lead to consumption figures which may differ from those calculated with these standards.

Technical Specifications.

Technical Specifications cont.

	<i>Trendline</i>		<i>77TSI Comfortline</i>		<i>66TDI Comfortline</i>		<i>GTI</i>	
Weights	3 Door		5 Door		5 Door		3 Door	5 Door
	Manual	DSG	Manual	DSG	Manual	DSG	DSG	DSG
Tare vehicle weight, Kg	1033	1068	1048	1088	1115	1140	1189	1189
Towing capacity, Kg								
Braked*	1000	1000	1000	1000	1000	1000	-	-
Unbraked	530	530	530	530	530	530	-	-
Towbar load limit, Kg	50	50	50	50	50	50	-	-
Exterior Dimensions								
Overall length, mm			4064				4064	
Width, mm			1682				1682	
Height, mm			1500				1500	
Wheelbase, mm			2456				2456	
Track, mm								
Front			1464				1443	
Rear			1456				1434	
Luggage Area Dimensions#								
Luggage area volume, Litres								
Rear seat upright			280				204	
Rear seat folded			952				882	
Luggage area floor length, mm								
Rear seat upright			699				633	
Rear seat folded			1371				1341	
Luggage area width, mm								
At widest point			962				962	
At narrowest point			942				942	
Luggage load height, mm								
To luggage cover			499				351	
To roof lining			820				672	

*With trailer brakes up to a gradient of 12%

Please note figures are sourced from overseas data where equipment levels by model variant may vary

Colours.



Candy White



Ocean Blue*



Flash Red



Reflex Silver Metallic



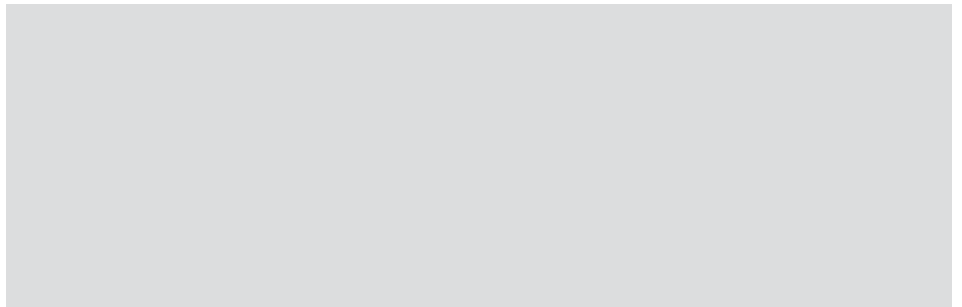
Pepper Grey Metallic*



Deep Black Pearl Effect

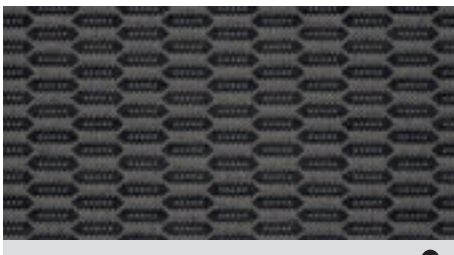


Shadow Blue Metallic†

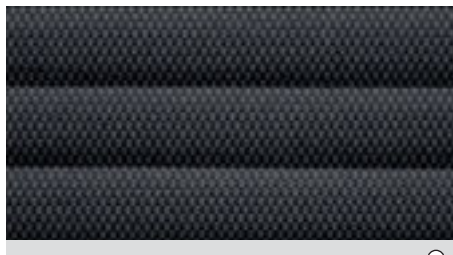


* Colours not available on GTI model. † Available on GTI model only.

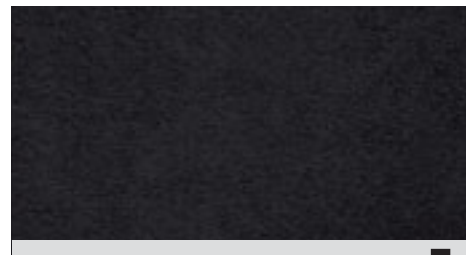
Upholstery.



Black cloth seat upholstery



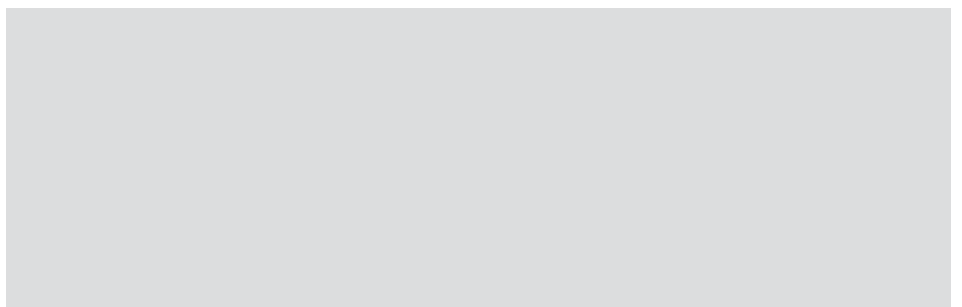
Black comfort cloth seat upholstery



Black alcantara/leatherette seat upholstery



Black / Red Jacky cloth seat upholstery



Please note Metallic and Pearl Effect paint are optional at extra cost. The print process does not allow for exact reproduction of the exterior or the upholstery colours. For further details please contact your Volkswagen Dealer.

● Standard in Trendline. ○ Standard in Comfortline. ■ Optional in Comfortline and GTI. □ Standard on GTI.

Fuel Saving Tips.

We can all Think Blue.

At Volkswagen, we aim to produce the most fuel efficient, environmentally sustainable vehicles possible. The good news is – we can all do our little bit to 'Think Blue'.

Below, we have summarised the best tips for how you can drive more responsibly and reduce fuel consumption even further. It's not just your wallet that will benefit from these tips, but the environment too. Its practical benefits go far beyond just saving money and reducing emissions. Here are nine tips on how to drive more efficiently.

Be aware and save fuel. Think Blue.



01. Take it easy and save
Drive the modern way and think ahead.
Drive smoothly and anticipate hazards. Hard braking and acceleration, sudden lane changes and unpredictable behaviour is fuel-inefficient.



02. Change up early and fill up later
Drive in the highest gear possible.
Use a higher gear with a manual transmission. Low revs take far less energy. With an automatic, reduce acceleration and avoid a kick down.



03. Just let it roll
Use overrun fuel cutoff.
With the right driving techniques, you can really save. Whilst in gear, coast down hills or towards traffic lights to reduce feeding fuel to your engine.



04. Comfort high, fuel consumption low
Use auxiliary equipment in moderation.
Check the equipment you're using – if you don't need it, consider turning it off. De-misters, sound systems and air conditioning all use energy.



05. Savings are in the air
Check your tyre pressures.
Check your tyre pressures to cut fuel consumption. Under-inflated tyres force your car to burn more fuel. Tyres in good order will help you save fuel.



06. A warm engine – a cool way to save
Avoid short trips.
Plan to minimise the number of trips you need to make. Frequent short trips mean higher fuel consumption as cold engines run less efficiently.



07. Well-oiled for impressive savings
Use Volkswagen approved engine oils.
A well-lubricated engine produces less emissions especially when the weather is cold or the trip is short. Change your oil at regular intervals.



08. Keep it sleek
Cut aerodynamic drag.
Remember to remove roof racks, bike racks or roof boxes off your car when they're not in use. Keep windows up and sunroofs closed to reduce drag.



09. Lightly does it
Avoid unnecessary weight.
Every kilogram you load into your car takes energy to move – energy that will be supplied by burning fuel. The lighter you drive, the more you save.

Glossary

Anti-lock Braking System (ABS)

When braking, wheel speed sensors measure the road wheel speed and should one or more wheels start to lock the ABS system reduces brake pressure to that wheel. This prevents the wheels from locking during heavy or emergency braking, enabling the vehicle to remain steerable.

Anti-Slip Regulation (ASR)

ASR is a switchable traction control system that prevents the driven wheels from spinning under acceleration by reducing engine torque. It is active at speeds above 40km/h.

Brake Assist

During emergency braking, Brake Assist aids the driver by increasing the brake pressure automatically to a level exceeding the locking limit. The ABS is thus quickly brought into the operating range, which enables maximum vehicle deceleration to be achieved.

Direct Shift Gearbox (DSG)

DSG is a manual gearbox in which the gearshifts are controlled electronically. What makes the DSG unique is that it has 2 separate gear sets operated by 2 multi-plate clutches. The benefit of 2 gear sets and 2 multi-plate clutches is that one gear set and clutch is engaged driving the vehicle with the second clutch having already pre-selected the next gear awaiting for power to be transferred. As the next gear has already been pre-selected prior to power being applied, the gear change only takes 3-4 100ths of a second. There is virtually no interruption to power, traction or acceleration. The DSG also offers Tiptronic gear selection and sports mode.

Electronic Brake-pressure Distribution (EBD)

Electronic, more sophisticated means of regulating the ratio of front/rear brake pressure. Settings are varied according to driving and load conditions to ensure each wheel is braked to the optimum extent.

Electronic Differential Lock (EDL)

EDL improves driving and steering characteristics when accelerating on road surfaces where each wheel has a different degree of traction. The system operates automatically and is combined with the ABS system. Using the ABS wheel sensors, EDL monitors the speed of the individual driving wheels. When a difference in driving wheel speed is detected (i.e. when one wheel starts to spin due to differences in road surfaces, e.g. due to water or dirt) the system brakes the spinning wheel, transferring engine power to the wheel with the best traction. EDL is active in forward and reverse and operates up to 40km/h.

Extended Electronic Differential Lock (XDL)

XDL is an extension of the Electronic Differential Lock (EDL) function. When cornering, XDL responds to the load relief at the front wheel on the inside of a corner. The ESP hydraulics are used for the XDL to apply pressure to the wheel on the inside of the corner in order to prevent wheel spin. This improves traction and reduces the tendency to understeer. As a direct result of the one-sided and precise braking pressure, cornering is sportier and more accurate.

Electronic Stabilisation Program (ESP)

ABS, EDL and ASR traction control systems are integrated into the Electronic Stabilisation Program (ESP). In short, ESP helps ensure that the vehicle goes where you steer it even in extreme driving conditions. The ESP system constantly compares the actual movement of the vehicle with pre-determined values and should a situation arise where the vehicle starts to skid, ESP will apply the brakes to individual wheels and automatically adjust the engine's power output to correct the problem. ESP prevents the vehicle from losing control when trying to avoid an accident, for example. It also prevents spinning off on a curve due to either understeer or oversteer.

Hill Start Assist (HSA)

Hill Start Assist (HSA) holds the vehicle when the foot brake is released by temporarily locking the brake pressure (for a maximum of 1.5 seconds) to provide comfortable starting-off without rolling back. Hill Start Assist (HSA) operates on inclines greater than 5% and is fitted in combination with manual transmissions and the Direct Shift Gearbox (DSG)

Owning a Volkswagen.

Volkswagen New Vehicle Warranty

Every new Volkswagen passenger vehicle is covered by a 3-year unlimited kilometers manufacturer's warranty, which includes Volkswagen Assist (24hr roadside assistance). Every new Volkswagen passenger vehicle is also covered by a 3-year paintwork and 12-year anti-corrosion perforation warranty.

Volkswagen Assist – 24 Hour Roadside Assistance

As a valued customer, you can be assured that wherever you travel within Australia, you will have access to roadside assistance, 24 hours a day, 365 days a year. This is complimentary for the duration of the vehicle's original Volkswagen warranty period. You will receive help in the event of a breakdown or accident and if required, your vehicle will be mobilised or transported to an Authorised Volkswagen dealer.

As a Volkswagen owner you will also have access to the additional benefits of accommodation and car rental if your vehicle cannot be mobilised within 24 hours, when you are over 100kms away from home. Volkswagen Roadside Assist can also be renewed at the expiry of the original warranty, ensuring ongoing coverage for your vehicle.

Volkswagen New Vehicle Extended Warranty*

To give you added peace of mind and the assurance of added security, you have the option to extend the warranty period to suit your ownership cycle. If your Volkswagen is still covered by its New Vehicle Warranty, we can offer you a 36 month/60,000km extension on the original warranty period already existing with your Volkswagen manufacturers Warranty. You then have the assurance that your Volkswagen remains a Volkswagen. For further information regarding warranty and extending your vehicles warranty period, please consult your local Volkswagen dealer, refer to your owner's handbook or visit volkswagen.com.au.

* Volkswagen New Vehicle Extended Warranty product is provided by Allianz Australia Insurance Limited (Allianz) ABN 15 000 122 850, AFSL Licence No. 234708. In arranging this cover, Volkswagen Group Australia Pty Ltd, ABN 14 093 117 876 and the authorised dealers act as agents of Allianz and not as your agent. Limits apply to the benefits you can claim. For full terms and conditions of cover, please refer to the relevant Volkswagen New Vehicle Extended Warranty policy document, available to you from your Volkswagen authorised motor dealer.

Volkswagen Service

Your Authorised Volkswagen Service Centre is part of Volkswagen's global Quality Management System, ensuring all dealers are certified to ISO 9001:2000 – an internationally recognised Quality Standard. Authorised Volkswagen Service Centres have factory trained Technicians equipped with the very latest diagnostic equipment, specialist tooling and Volkswagen Genuine Parts. An Authorised Volkswagen Service Centre is able to undertake work in accordance to factory specified guidelines and maintenance schedules.

Volkswagen Genuine Accessories®

Volkswagen Genuine Accessories® are designed for your vehicle and approved by Volkswagen, with particular regard to safety. The workmanship, dimensional accuracy and materials used in these parts comply with factory specifications. To ensure safety and reliability, Volkswagen recommends the use of Volkswagen Genuine Accessories®. Volkswagen Authorised Dealers offer a 3-years/ unlimited kilometres warranty on genuine accessories if fitted prior to vehicle purchase, or a 2-years/unlimited kilometres warranty if fitted after purchase.

Volkswagen Finance

Whether you are buying, borrowing or leasing, Volkswagen Finance will certainly make you think differently about financing and insuring your new Volkswagen. Committed to meeting the needs of Volkswagen drivers across Australia, we offer a range of leasing, financing and insurance products, each with distinct advantages depending on your specific circumstances. Our packages are designed to suit your individual requirements and budgeting needs with fast approval times.

Speak to your participating local Volkswagen Dealer today for the best financial solution and ultimate insurance protection for your vehicle or visit volkswagenfinance.com.au.

VOLKSWAGEN FINANCE





Think Blue. Creating a sustainable future together.

Volkswagen is committed to sustainability now and in the future, for us this means taking responsibility for the environment by getting involved in initiatives that contribute to a sustainable future through our products and behaviour.

We call this way of thinking, Think Blue.

Volkswagen aims to become the leading automotive manufacturer for the environment and economy, making efficient and sustainable vehicles available to everyone. We want to inspire and motivate people to get involved in ecological sustainability, on the road and everywhere else.





Das Auto.

Volkswagen Polo

Printed in Australia

August 2011

Publication: VGA1926J

Internet: www.volkswagen.com.au

For further information please call: 1800 060 936

Volkswagen is distributed by Volkswagen Group Australia Pty Ltd, The Lakes Business Park, 6 Lord Street, Botany, NSW 2019. ABN 14 093 117 876. Specifications are as planned at August 2011, for Model Year 2012 and are subject to change without notice or obligation. All information in this specification sheet is correct at the time of publication, however variations may occur from time to time and Volkswagen, in so far as it is permitted by law to do so, shall not be liable in any way as a result of any reliance by any person on anything contained in this specification sheet. Authorised Volkswagen dealers will provide up-to-date information on model application, design feature, prices and availability on request.

Volkswagen Insurance & Volkswagen Extended Warranty are provided by Allianz Australia Insurance Limited (Allianz), AFS Licence No. 234708, ABN 15 000 122 580. In arranging this insurance Volkswagen Financial Services Australia Pty Limited, ABN 20 097 071 460 & Volkswagen Group Australia Pty Ltd, ABN 14 093 117 896 and the authorised dealers act as agents of Allianz and not as your agent. Volkswagen Finance is a trading name of Volkswagen Financial Services Australia Pty Limited. Locked Bag 5009, Alexandria NSW 2015. Tel: 02 9695 6311.