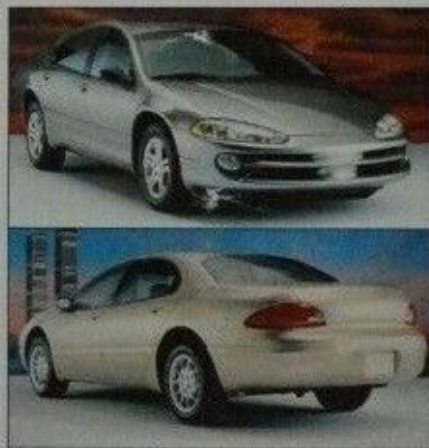


Introducing
the all-new 1998
Chrysler Intrepid and
Chrysler Concorde.



1998 Chrysler Intrepid

Dynamic, purposeful and stimulating, 1998 Chrysler Intrepid benefits from an enhanced Cab-Forward design, resulting in a striking silhouette that flows cleanly from nose to tail. The wide stance promises road-hugging agility and dynamic performance, expectations fulfilled by the advanced chassis and powertrain. The all-new Intrepid - it will transform Canadian roads, and the way you feel about driving.



1998 Chrysler Intrepid ES shown in Bright Platinum Metallic

1998 Chrysler Concorde

1998 Chrysler Concorde... the most beautiful expression yet of Cab-Forward design. Its flowing exterior lines create a new sense of motion even when the car is standing still, while the textured oval grille and sculpted quad projector-type headlamps bear the classic styling influences of Aston Martin and Ferrari. The all-new Chrysler Concorde - it will change your world.



1998 Chrysler Concorde shown in Champagne Pearl Metallic

1998 Intrepid/Concorde facts

Dimensions*	1998 Chrysler Intrepid	1998 Chrysler Concorde
Wheelbase - mm (in.)	2670 (105.0)	2670 (105.0)
Overall Length - mm (in.)	5174 (203.7)	5311 (209.1)
Curb Weight - kg (lb.)	1568 (3456)	1571 (3461)
Coefficient of Drag	0.314	0.295
Passenger Interior Volume - L (cu. ft.)	2933 (104.3)	3050 (107.7)
Trunk Volume - L (cu. ft.)	523 (18.4)	530 (18.7)

Powertrains*	1998 Chrysler Intrepid Concorde LX	1998 Chrysler Intrepid ES/Concorde LX
Type	2.7-litre DOHC SMOPI	3.2-litre SOHC SMOPI
	24-valve V6	24-valve V6
Power - kW (bhp) @ rpm	149 (200) @ 5800	164 (220) @ 6600
Torque - N·m (lb-ft) @ rpm	255 (186) @ 4900	301 (222) @ 4000

*All information is preliminary and subject to change.

Arriving this fall.

When we introduced the award-winning Chrysler Intrepid and Chrysler Concorde models, we revolutionized everything about the traditional sedan, including its shape.



Along the way, our roomy, responsive Intrepid and Concorde also reshaped the expectations of an entire generation of sedan buyers.

Now we're out to transform these epoch-making sedans again with the introduction of the all-new, 1998 Chrysler Intrepid and Chrysler Concorde to be built at the Chrysler Canada Assembly Plant in Bramalea, Ontario.

These sleek, all-new 1998 models benefit from an enhanced Cab-Forward design that results in improved aerodynamics as well as greater interior volume, including increased trunk room. The stable ride delivered by a wheels-to-the-corners stance remains intact.




Beneath the stunning exteriors, the 1998 models carry one of two all-new power sources: a 2.7-litre DOHC 200-horsepower V6 engine or a 3.2-litre SOHC 220-horsepower V6 engine. Both engines feature an aluminum block and aluminum cylinder heads for lightweight efficiency, outstanding driving performance and improved fuel economy.

The designers worked under the mandate that a car's interior must fulfill the expectations raised by its exterior. The result is an arrangement that "feels right" to driver and passengers while demonstrating strict attention to detail.

Using advanced computer analysis systems, Chrysler designers and engineers moved the 1998 Intrepid and Concorde from concept to reality in record time. All the better to move you into position behind the wheel of the all-new, next-generation Chrysler Concorde or Chrysler Intrepid as quickly as possible.



GREAT CARS. GREAT TRUCKS.

CHRYSLER  CANADA