

**MORE ... MORE  
CARRYING POWER  
IN NEW FALCON!**



**Falcon 13cwt. Utilities and Vans**



*Pictured above is the Falcon Utility (equipped with V8 engine and manual transmission)*

## Now! Stronger 13 cwt construction! Bigger 'Sixes' and 'V8' Engines!

Now... here's everything you ever wanted in a utility. Giant 13 cwt load-carrying construction throughout. New, get-up-and-haul power!

Falcon's stronger 13 cwt construction is engineered to provide extra margins of strength throughout the vehicle. There's more strength where you expect to find it... body construction is stronger, the wheels and tyres are bigger, the rear axle is stronger, the two-stage rear springs are even more rugged. The brakes are a giant 10 in. diameter.

To complement Falcon's stronger 13 cwt construction, there are three all-new bigger engines, each designed to give acceleration in the lower speeds and extra reserves of

power in the high speeds for sustained hauling under the roughest conditions. As you'd expect with Ford engines they deliver excellent petrol-economy at all speeds. The new engines are the Ford 3.1 litre Six, the Ford 3.6 litre Six and the 5 litre Mustang V8.

Take the wheel and you'll enjoy the widest, roomiest and most comfortable interior of any ute in Falcon's class. And before you've travelled half-a-mile you'll realise this is also the strongest, most solidly constructed, most beautifully performing utility you have ever driven.

As for handling, stability and riding smoothness, Falcon outclasses them all... because Falcon still has the widest

track in its class (and a long 111" wheelbase); a suspension system designed specifically for a utility, including two-stage rear springs, and unique Torque-box chassis construction. Loadspace? In addition to the carrying capacity of 13 cwt, Falcon gives you tremendous usable loadspace. There's more usable loadlength from tailgate to bulkhead, and more usable loadwidth between wheel housings, and there's the convenience of a new easy-to-use tonneau cover with exclusive nylon rope tie-down.

Falcon has an impressive list of safety features as standard equipment, including: dual braking system, padded dash, padded steering-wheel hub, padded sun visors,

recessed interior door handles, seat belts, safety designed window knobs, windscreen washers. Choose either manual or automatic transmissions with each engine—even with the V8. Two models: Falcon Utility and the Falcon 500 Utility.

Standard equipment of the Falcon Utility includes:

- Ford 3.1 litre Six
- Alternator
- 7.75 x 14 inch low-profile 6-ply tyres
- Heavy-duty rubber floor mat
- "SelectAir" ventilation system
- Windscreen washers
- 2-speed electric windscreen wipers
- Long-lasting vinyl upholstery
- Padded instrument panel
- Big self-adjusting 10-inch drum brakes
- Undercoating of all vital underbody parts
- Interior bonnet lock
- 14 inch, 5-stud wheels, with JJ safety rims
- Tonneau cover with nylon rope tie-down
- All safety items listed on page 6.



*Pictured above is the Falcon 500 Utility.*

## The new Falcon 500. Top of the line luxury, performance and equipment.

More than ever, the new Falcon 500 is a superb combination of luxury, rugged reliability and outstanding performance. The standard of the interior is unmatched by any competitor. There's luxury and safety all round. The seat is wide . . . inviting . . . with deep foam-cushioning, resilient springing and stitch-pleated, expanding-vinyl upholstery.

A few of Falcon 500's many safety features include: Padded armrests, padded sun-visors, a padded steering wheel hub and padded instrument panel.

On the road, you realise that virtually all road noise is elim-

inated. Reason: the most lavish use of sound-deadening materials ever put into a utility — completely surrounding the cab.

Performance is also very special indeed. Standard engine with the Falcon 500 Utility is the new Ford 3.6 litre Six with all-synchromesh manual transmission. Or you can choose Fordomatic 3-speed automatic, or the remarkable SelectShift Cruise-O-Matic, the automatic that's also a manual when you want it to be.

But performance doesn't stop there. You can now order for your Falcon 500 Utility the whiplash power of the 5 litre

Mustang V8 engine teamed with either a fully synchromesh manual or the SelectShift Cruise-O-Matic.

Behind the wheel you'll find convenience you'll like: electrically operated windscreen washers, 2-speed electric windscreen wipers, all instruments individually marked and fully illuminated for easy reading at night. Within easy reach are the controls for Falcon's "SelectAir" ventilation system. The interior is colour-keyed throughout, including the steering wheel and new rubber floor mats.

Now add to all of this: Falcon's massive "Torque-Box" chassis construction, the greater carrying power (13 cwt)

and the long list of safety items listed on page 6 and . . . choosing a utility has become easy. The Falcon 500! Standard equipment includes:

Ford 3.6 litre Six  Fully synchromesh 3-speed gearbox  Interior rear view mirror  Floor mats and steering wheel colour-keyed to interior trim  Door operated courtesy lights  Exterior door locks on both doors  Stitch pleated seat trim  Fully padded instrument panel  2-speed electric windscreen wipers/electric washers  Padded safety door-pull/armrests  Cigarette lighter  Safety sun-visors.  Deluxe full wheel covers  Chrome rear bumperettes  All items mentioned for the Falcon Utility on page 3  All safety items listed on page 6.



**Biggest and most comfortable interior . . . luxury seating . . . silent ride . . . packed with safety features!**

Whether for on-the-job travel or leisure-time outing, Falcon has spreading comfort-room for three big people. All dimensions are biggest in Falcon's class. Door openings are wide and deep for easy entry and exit. As the seat is moved forward for a shorter person, it moves higher to provide better visibility. The seat is deeply upholstered and includes non-sag, more resilient springs in its special construction. And your travel is quieter — special insulating and sound-deadening materials completely surround the interior. Equipment includes a big parcel shelf behind the seat, big glove-box, and Falcon's new dust-free "SelectAir" ventilation system.

**For greater peace of mind as you drive**

In addition to Falcon's basic safety advantage (its superb handling and sure-footed ride under all conditions), many safety items have been built into the new Falcon Commercials. These include features to reduce the likelihood of an

accident occurring . . . and features to help reduce the likelihood of injury in the case of an accident.

Every Falcon has as standard equipment all the following safety features:

- Seat belts — featuring push button release
- Fully-cushioned instrument panel padding
- Padded safety sun visors
- Deeply dished steering wheel with full-width padded hub
- Steering column rearward displacement minimized by front end structure design
- Safety-type anti-burst double-grip door locks
- Padded door-pull/armrest (Falcon 500)
- Safety designed recessed interior door handles
- Safety designed control knobs and window regulation handles
- Safety glass all round (including "zone toughening")
- Anti-glare windscreen wiper arms and big 16 inch wiper blades
- 2-speed electric windscreen wipers and washers (Falcon 500), single-speed wipers and pump-type washers (Falcon)
- Huge 10 inch diameter brakes — self adjusting and with thicker linings
- Dual brake lines and dual master cylinder
- Outside rearview mirror, driver's side
- Safety rim wheels and performance/load-rated tyres
- Reversing lights.



**More . . . More . . . carrying power!  
Giant 13 cwt carrying capacity . . .**

**More usable loadspace than any other Utility near the price!**

There's one thing that everyone looks into, when they are comparing utilities. Loadspace! And that's what Falcon has plenty of . . . usable and practical in its dimensions.

Study the photograph above . . . the load area you see there has more usable space in it than any other utility near the price.

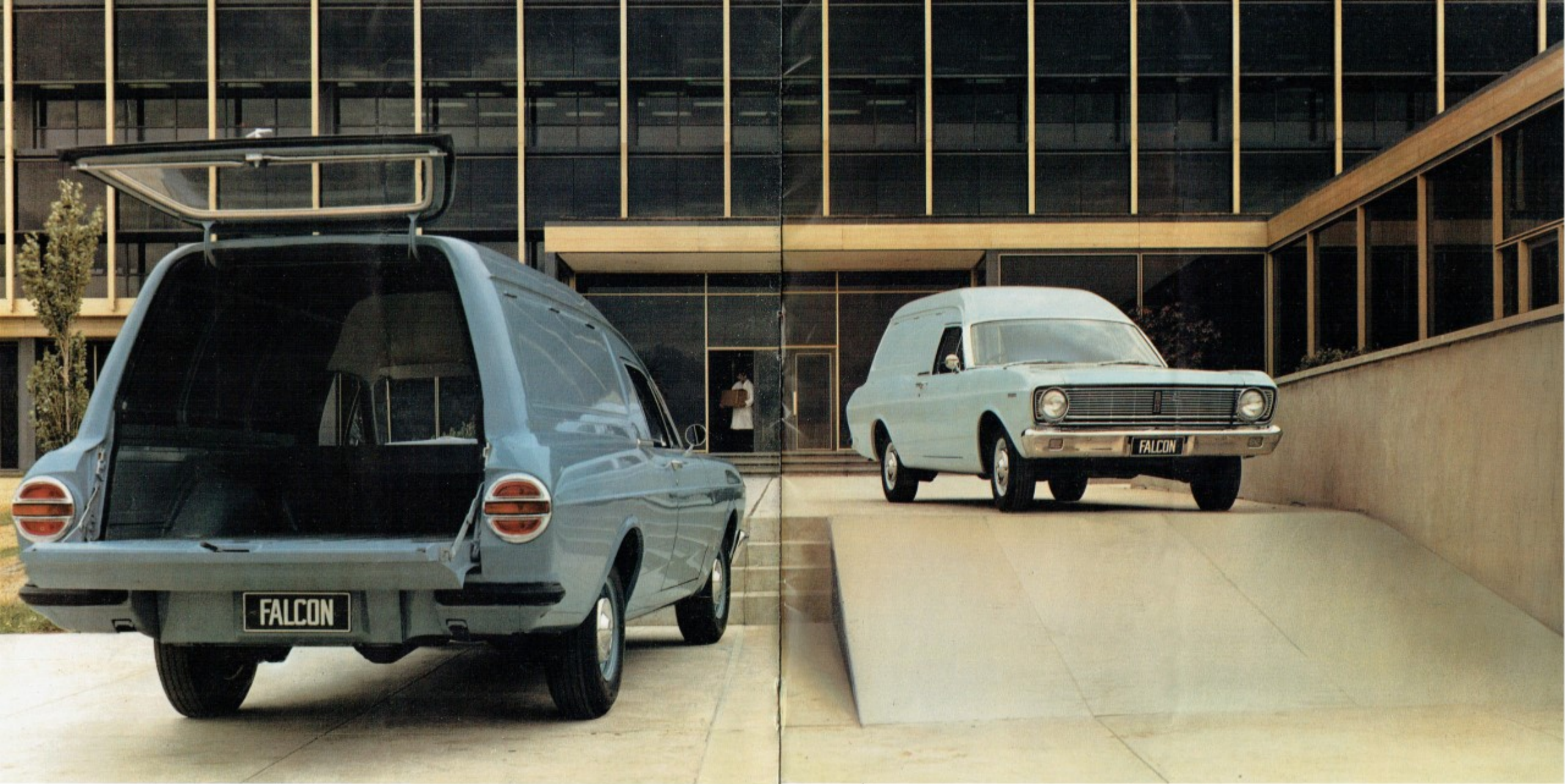
Width between the wheelhousings is 44.6 inches. Usable loadlength is an amazing 67.5 inches and that's with the tailgate closed.

This means you can pack a really big and bulky load as well as a heavy one. For really rugged jobs, Falcon's floor is the strongest. Look again at the photograph above. The main floor area is one piece welded steel with integral

skid-strips . . . the forward floor area is laminated board with steel skid-strips . . . the whole load-area is reinforced with a much stronger floor to frame construction. The Falcon Utility also has thicker key structural sheet metal, and a one-piece bulkhead.

There's a new tie-down tonneau cover too — using nylon rope. In addition to all of this there's: *heavier* duty two stage rear springing, together with *stronger* rear axles, and a toughening up of all vital weight-carrying body components. Result? — A new, bigger load capacity of 13 cwt.

For giant carrying power and all the strength that this means — plus more usable loadspace . . . for bigger, bulkier jobs, there's only one ute to choose: New Falcon!



## Falcon High Roof Van...leads the way with room, 13cwt load-carrying strength and style!

Here is the van with style, space and super strength. The van with striking eye-appeal — huge interior load-space — and stronger 13 cwt construction. Your first glance confirms that Falcon also has the *widest* and *deepest* rear door opening of any van in its class. Inside, there's a giant 92 cubic feet of cargo area... 57" wide (44.6" between wheelhousings) and 67.5" long, with a loadheight of over 41".

And that's not all. Take a closer look and you'll see that

besides having the biggest loadspace, this new Falcon Van has the convenience of a counter-balanced tailgate *and* a counter-balanced rear window for simple one-handed operation. And loading height with tailgate down is only 23" above ground level and you have a flat deck 8' 7" long (103").

As for strength and ruggedness... there's much more built into the new Falcon Van to match its greater load carrying capacity. Wheel sizes have been increased to take

the bigger 7.75 x 14" low profile tyres. Axles are stronger and the suspension and body parts even tougher.

In the power department, the Falcon Van moves you further out front with your choice of two powerful engines. The Ford 3.1 and 3.6 litre Sixes both feature a seven bearing crankshaft, hydraulic valve lifters and increased torque for unrivalled smoothness, quietness and through-the-gears acceleration.

Up front you have the same luxurious and comfortable

driver appointments as the Falcon Utility. A feature of the new Falcon Van is the deep, wide side-panelling — the perfect site for promoting your own advertising display message.

Standard equipment is the same listed for the Falcon Utility on page 3, and the same safety items as listed on page 6. In anybody's language, the practical design features and the big load capacity of the new Falcon High Roof Van adds up to more carrying power and more profit — for you.



**FORD 3.1 LITRE SIX.** Developing 114 horse-power and 180 lb/ft of torque, the Ford 3.1 litre "Six" quietly and efficiently goes about its job of giving you economical operation — at the same time providing more than adequate power for a 13 cwt load. (Standard on Falcon Utility and Van, with manual transmission.)

**FORD 3.6 LITRE SIX.** Developing 135 horse-power and 208 lb/ft torque this big, new 3.6 litre "Six" provides fast acceleration in the lower speed ranges even with a full load. In addition there are higher sustained speeds and inbuilt reserves of safety power for job hauling in the roughest conditions; passing at highway speeds; or for pulling trailers, caravans, boats (Standard on Falcon 500 Utility).

Both new "Sixes" incorporate seven main bearings and hydraulic valve lifters for smoother, quieter operation . . . are of low-friction design for less piston travel and longer engine life.

**5 LITRE MUSTANG V8.** Developing 210 h.p. and 300 lb/ft of torque. With the optional Mustang V8 aboard you've never driven a utility so ready, willing and eager to show its ability to handle really big loads in rough conditions. This means acceleration-under-load, and sheer hauling power that will be a revelation to even the most demanding utility drivers.

**NEW TRANSMISSIONS.** The new Falcon also includes transmissions that suit your driving needs exactly and team perfectly with the engine of your choice.

**MANUAL TRANSMISSION:** Standard on Falcon Utility and Falcon Van.

**MANUAL TRANSMISSION (ALL-SYNCHRO-MESH):** Standard on Falcon 500, optional on Falcon.

Both manual transmissions feature positive action and shorter lever travel. Turns power into instant, smooth performance.

**FORDOMATIC 3-SPEED AUTOMATIC:** World-famous for its smooth responsiveness and trouble-free operation.

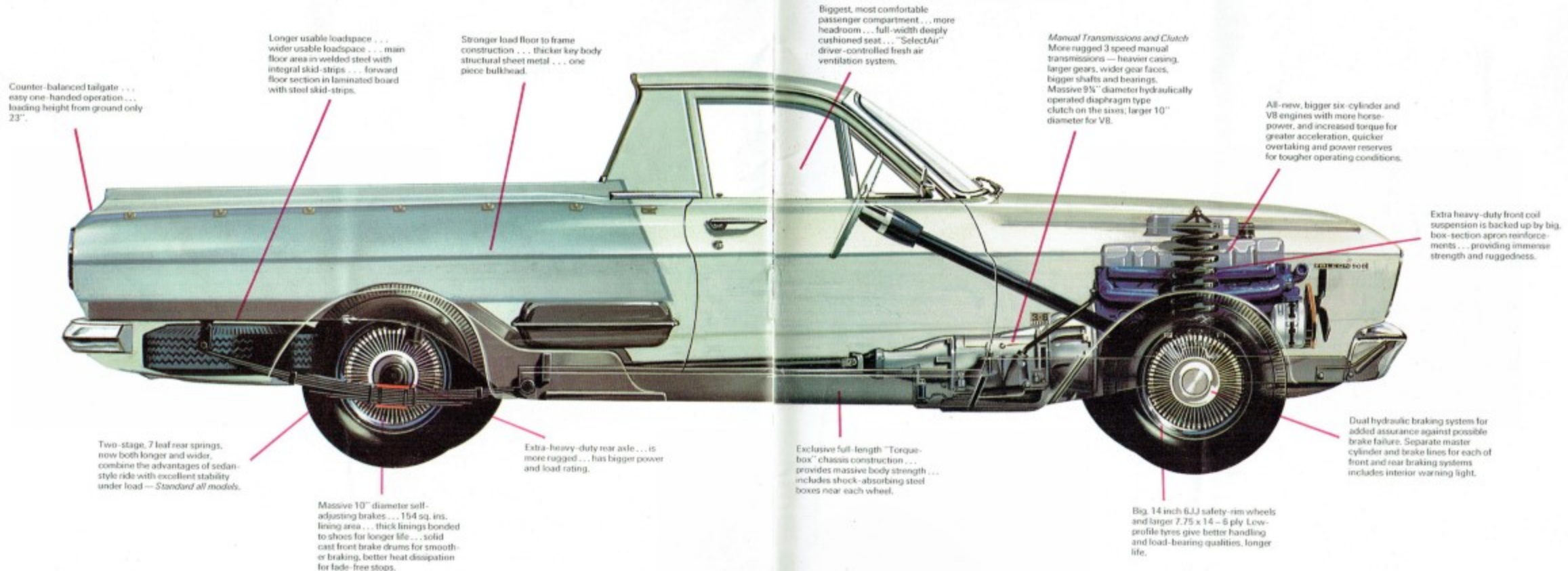
**SELECTSHIFT CRUISE-O-MATIC:** Highlight of the new transmission line-up is the exclusive SelectShift Cruise-O-Matic, the remarkable fully automatic that also works as a manual. You can shift up-and-down for increased performance pleasure, or you can let it take over for you, anytime you say.

**EXCLUSIVE WIDE-TRACK HANDLING:** The new Falcon Utilities and Vans give you the widest track of any vehicle in their class, with a wheelbase to match. Track, front and rear, is 58 inches. The wheelbase is 111 inches. This wider, longer stance makes a tremendous difference to your driving. You'll notice how the new Falcon Utilities and Vans cling to the road and take corners effortlessly . . . even under the most tortuous conditions.

POWER-TRAIN AVAILABILITY	FALCON UTILITY	FALCON 500 UTILITY	FALCON VAN
3.1 Litre/Manual (non-synchro)	Standard	Not Available	Standard
3.1 Litre/Manual (all-synchro)	Optional	Not Available	Optional
3.1 Litre/Fordomatic	Optional	Not Available	Optional
3.6 Litre/Manual (non-synchro)	Optional	Not Available	Optional
3.6 Litre/Manual (all-synchro)	Optional	Standard	Optional
3.6 Litre/Fordomatic	Optional	Optional	Optional
3.6 Litre/Cruise-O-Matic	Optional	Optional	Optional
5 Litre/Manual (all-synchro)	Optional	Optional	Not Available
5 Litre/Cruise-O-Matic	Optional	Optional	Not Available

**SUPER QUALITY PAINT FINISH.** Falcon's value starts with its exclusive "Super Diamond Lustre" acrylic baked-enamel finish. A finer, deeper, more durable finish is eight coats deep. The first three stages give positive rust protection with a hot phosphate spray, zinc primer and underbody dip that really seals. Stages four and five are epoxy primers which provide a tough, smooth base for three coats of durable acrylic baked enamel — giving Falcon an unequalled, long-lasting finish. In addition, all vital underbody parts receive a special "Spray-On" undercoating to provide complete protection underneath.

Extra strength by design . . . built to be stronger . . . carry more . . . last longer!



Counter-balanced tailgate . . . easy one-handed operation . . . loading height from ground only 23".

Longer usable loadspace . . . wider usable loadspace . . . main floor area is welded steel with integral skid-strips . . . forward floor section in laminated board with steel skid-strips.

Stronger load floor to frame construction . . . thicker key body structural sheet metal . . . one piece bulkhead.

Biggest, most comfortable passenger compartment . . . more headroom . . . full-width deeply cushioned seat . . . "SelectAir" driver-controlled fresh air ventilation system.

Manual Transmissions and Clutch More rugged 3 speed manual transmissions — heavier casing, larger gears, wider gear faces, bigger shafts and bearings. Massive 9 1/2" diameter hydraulically operated diaphragm type clutch on the sixes; larger 10" diameter for V8.

All-new, bigger six-cylinder and V8 engines with more horse-power, and increased torque for greater acceleration, quicker overtaking and power reserves for tougher operating conditions.

Extra heavy-duty front coil suspension is backed up by big, box-section apron reinforcements . . . providing immense strength and ruggedness.

Two-stage, 7 leaf rear springs, now both longer and wider, combine the advantages of sedan-style ride with excellent stability under load — Standard on all models.

Extra-heavy-duty rear axle . . . is more rugged . . . has bigger power and load rating.

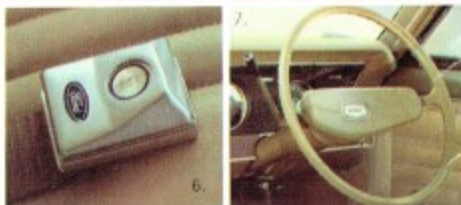
Massive 10" diameter self-adjusting brakes . . . 154 sq. ins. lining area . . . thick linings bonded to shoes for longer life . . . solid cast front brake drums for smoother braking, better heat dissipation for fade-free stops.

Exclusive full-length "Torque-box" chassis construction . . . provides massive body strength . . . includes shock-absorbing steel boxes near each wheel.

Big 14 inch 6JJ safety-rim wheels and larger 7.75 x 14 — 6 ply Low-profile tyres give better handling and load-bearing qualities, longer life.

Dual hydraulic braking system for added assurance against possible brake failure. Separate master cylinder and brake lines for each of front and rear braking systems includes interior warning light.

For greater peace of mind as you drive...



Illustrated are some of the safety features described in this brochure.

1. Falcon's 'Wide-Track' design. Provides safer handling, greater stability, and sure-footed ride under all conditions.
2. Fully cushioned instrument panel padding.
3. Safety-type double-grip door locks.
4. Safety-rim wheels, performance-and-load-rated tyres.
5. Safety-designed recessed door-handles.
6. Seat belts with push-button release.
7. Deeply-dished shock-absorbing steering wheel with a full-width safety-padded hub.

## Specifications:

ENGINES	"FORD 3.1 Litre"	"FORD 3.6 LITRE"	"FORD 5 LITRE V8"
Cylinders/Valves	6/OHV	6/OHV	8/OHV
Displacement (Cu. Ins./cc)	188/3080	221/3622	302/4949
Bore/Stroke (Ins.)	3.68/2.94	3.68/3.46	4.0/3.0
Comp. Ratio (to 1)	9.2	9.3	9.0
Max. B.H.P.	114 @ 4400 RPM	135 @ 4400 RPM	210 @ 4600 RPM
Max. Torque (lb./ft.)	180 @ 2400 RPM	208 @ 2400 RPM	300 @ 2600 RPM

6 cylinder engines feature 7 main bearing crankshaft — all engines hydraulic valve lifters.

**ENGINE FEATURES:** Up to 6,000 mile oil changes; 12-volt electrical system; 54 plate 40 amp/hour battery, 35 amp heavy-duty alternator; corrosion resistant muffler with 2" diam. exhaust pipe.

**CLUTCH (Manual Transmission):** Diaphragm spring type, single cushion disc, dry plate, hydraulically-operated. 6 cylinder engines: Diam. 9.25". Friction area 77.8 sq. ins. 8 cylinder engine: Diam. 10.00". Friction area 85.5 sq. ins.

**MANUAL TRANSMISSION:** 3 forward speeds — 1 reverse. Steering column change. Synchromesh 2nd and 3rd gears. (Synchro. 1st gear standard on Falcon 500 Utility, extra cost option Falcon Utility and Van). Ratios (to 1) 6 cylinder engine: 1st — 2.95, 2nd — 1.69, Top — 1.00. Reverse — 3.80. 8 cylinder engine: (all synchromesh) 1st — 2.71, 2nd — 1.69, Top — 1.00. Reverse — 3.47.

**FORDOMATIC AUTOMATIC TRANSMISSION:** Three forward gear ratios, one reverse. Ratios (to 1): Low — 2.39, inter — 1.45, top — 1.00, reverse — 2.09.

**CRUISE-O-MATIC TRANSMISSION:** Three speed automatic with SelectShift operation to provide both manual and automatic operation. Ratios — same as Fordomatic.

REAR AXLE: Ratios	3.1 Litre	3.6 Litre	6.0 Litre
Manual Transmission			
Standard	4.00:1	3.50:1	2.93:1
Optional		4.00:1	
Automatic Transmission			
Standard	3.50:1	3.50:1	2.93:1
Optional	4.00:1	4.00:1	

7.75" diameter ring gear.

**FRONT SUSPENSION:** Angle-poised ball-joint type. Heavy-duty coil springs with internally mounted hydraulic double-acting shock absorbers. Torsion bar ride stabilizer.

**REAR SUSPENSION:** Semi-elliptic asymmetrical 2-stage 7-leaf variable rate leaf springs. Diagonally mounted hydraulic double-acting shock absorbers. Rubber bushed shackles.

**STEERING:** Recirculating ball type. Steering gear ratio 20:1. Steering wheel 16 in. diam. Turning circle 36.6 ft.

**BRAKES:** Self-adjusting hydraulic, 10" diam. front and rear. Solid cast front drums. Bonded linings — area 154.4 sq. ins. Power disc front brakes optional.

**WHEELS AND TYRES:** Wheels: 14" x 6 JJ

pressed steel, ventilated disc, safety rims, 5 stud mountings. Tyres: 7.75 x 14" — 6 ply. All tyres low profile, tubeless, black sidewall.

**WEIGHTS:** Approximate kerb weight with 3.1 litre engine, manual transmission: Utilities 2932 lb. • Van 3088 lb. Add 47 lb. to kerb weight for auto. trans. GVW — 4440 lb./3.1 and 3.6 Litre Engines — 4475 lb./5.0 Litre Engine

**FUEL TANK CAPACITY:** 12.8 Imp. gals. **DIMENSIONS:** Overall length 187.4". Overall width 73.5". Overall height: Utilities — 55.6", Van — 64.6". Wheelbase 111". Track front and rear 58". Ground clearance 7".

**WARRANTY:** Falcon gives you warranty protection for 12,000 miles or 12 months, whichever comes first, excluding tyres and tubes which are warranted by their manufacturer. Every Falcon is warranted against defects in materials and workmanship for this period. Owners are responsible only for normal maintenance and routine replacement of maintenance items.

### LOW-COST DEALER SERVICE & PARTS SUPPLY

Your Ford Falcon is backed by over 400 Ford Dealers' low-cost specialised service, and the ready supply of genuine low-cost FoMoCo parts.



The specifications referred to above were in effect at the time this publication was approved for printing; however, Ford Motor Company of Australia Limited and/or Ford Sales Company of Australia Limited, reserve the right, subject to the laws of any state or territory and the regulations at the time, at its discretion and without notice, to change specifications and prices of the products referred to herein at any time and without incurring any liability whatsoever to any purchaser thereof.

Some of the items illustrated or referred to in this publication are optional at extra cost.



FORD SALES COMPANY OF AUSTRALIA LIMITED • Reg. Office: 1735 Sydney Rd., Campbellfield, Vic.