

# TUCSON

2024







## Full of life.

Get ready for the 2024 TUCSON. Your next adventure begins with more technology, more advanced safety, more power and more space. Not to mention a revolutionary design that is modern and captivating. Added to the innovative design and list of features are three powertrain choices, including the TUCSON Hybrid and TUCSON Plug-in Hybrid.

Your sidekick to outdoor adventure awaits.



Available panoramic sunroof

# Chiselled for adventures.

The design of the TUCSON exudes modern style with angular body panels, cutting-edge illumination and bold, chiselled surfaces. The signature design of the available hidden LED daytime running lights makes a striking and sophisticated statement. Seamlessly integrated into the front grille, they're mysteriously revealed only when illuminated. Bold rear wheel arches and available 19" alloy wheels further reinforce the aggressive styling.



**Three-dimensional "Parametric Dynamic" design lines**  
Parametric Dynamic design lines use converging, bold character lines to deliver a unique three-dimensional presence.



Available hidden LED daytime running lights



Available LED tail lights



Available 19" alloy wheels



# Three types of power. Your type of SUV.

The TUCSON is giving you choices that push the boundaries of efficiency and performance with three available powertrain options:



## Gasoline

Standard Smartstream 2.5L GDI engine

187  
horsepower

178  
lb.-ft. torque



## Hybrid

Available Smartstream 1.6L Turbocharged Hybrid engine  
+ 44.2 kW electric motor with 1.49 kWh lithium-ion battery

226  
combined  
horsepower

258  
lb.-ft. torque



## Plug-in Hybrid

Available Smartstream 1.6L Turbocharged Plug-in Hybrid engine  
+ 66.9 kW electric motor + 13.8 kWh lithium-ion battery

261  
combined  
horsepower

258  
lb.-ft. torque



### Standard HTRAC™ All-Wheel Drive with multi-terrain control modes

For the ultimate in handling, performance and traction, enjoy our HTRAC™ All-Wheel Drive system. It allows you to select the appropriate traction setting that best suits your driving conditions with three dedicated terrain modes. Choose from Snow, Mud or Sand.



### Available button-type shift-by-wire with paddle shifters

Intuitive buttons replace the traditional gear shifter on select models. The shift-by-wire system also features paddle shifters for a sporty feel.



Ultimate Hybrid model shown.

## More space. More refined.

A feeling of openness welcomes you the moment you step into the TUCSON's cabin. Enjoy a number of features that are customizable to your liking, including the available 8-way power driver's seat with an available integrated memory system for two driver profiles and available interior ambient lighting with up to 64 colour choices to enhance your night drives. Whether it's a solo adventure or a long-weekend excursion with friends, stay comfortable during the journey with a wealth of features that includes standard heated front seats, a heated steering wheel, available ventilated front seats and available heated rear seats.



### More cargo space

The TUCSON offers you exceptional versatility with 60/40 split-fold rear seats and increased cargo capacity — up to 2,108 litres with rear seats folded down on models with a 1.6L Turbo Hybrid engine\*.



# Advanced tech you can instantly connect with.

Make your drive more enjoyable and your life a little easier with the advanced technologies offered in the TUCSON. Standard Apple CarPlay™ and Android Auto™ smartphone connectivity lets you access your favourite mobile apps — music, maps, messages and more — seamlessly and safely through voice commands and the touch-screen display. Add to that an available 8-speaker premium Bose® sound system and hitting the road just got way more entertaining.



## Available Remote Smart Parking Assist<sup>1</sup>

Remote Smart Parking Assist can help you pull out of those tight parking spaces. Simply use the key fob while standing outside the vehicle and it remotely drives out of the parking space. Conversely, the system can also park the vehicle in tight spaces, like your garage.



## 10.25" touch-screen with navigation system and available surround view monitor

The high-definition 10.25" touch-screen with navigation system is elegantly integrated into the waterfall-inspired centre stack. The advanced screen also features an available surround view monitor that offers a 360° view around the TUCSON for added perspective.



## Available 10.25" full digital cluster with available Blind View Monitor<sup>2</sup>

The 10.25" digital gauge cluster eliminates the traditional hood-style housing to attain a new level of openness and modern interior design. Use the turn signal and the cluster will reveal a live feed of your blind spot when equipped with the available Blind View Monitor.



## Wired Apple CarPlay™ and Android Auto™

Standard Apple CarPlay™ and Android Auto™ lets you access your favourite mobile apps — music, maps, messages and more — seamlessly and safely through voice commands and the touch-screen display.

# Ultimate convenience. Ultimate connectivity.

Bluelink<sup>®</sup> is our available connected vehicle system that conveniently keeps you connected with your Hyundai via the smartphone app and offers a suite of services at the press of a button.

This innovative connected system gives you the ability to remotely lock/unlock and start your vehicle, adjust climate controls, keep track of your vehicle's health with smart diagnostic tools and so much more.



Remote start with climate control

## SOS

SOS emergency and roadside assistance



Automatic collision notification



Remote lock/unlock



Find my car



Local search



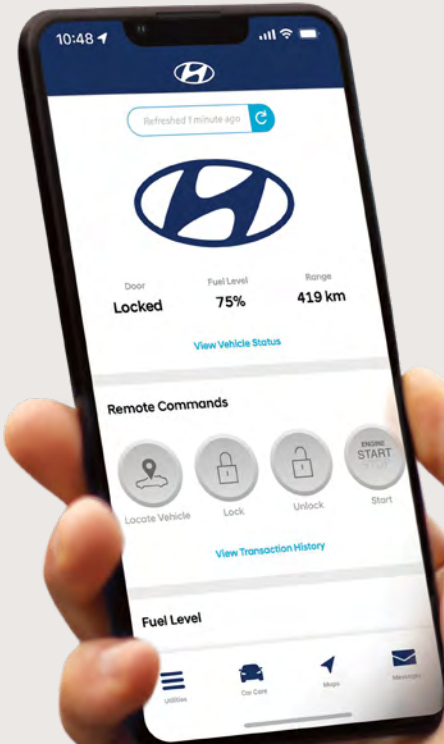
Real-time diagnostics



Find a dealer

## 3 YEAR

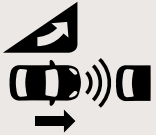
Complimentary 3-year subscription on equipped models



# Hyundai SmartSense™

Our suite of available Hyundai SmartSense™ safety features includes a range of camera, radar and motion detection technologies to provide you with added peace of mind.

## Standard features:



Forward Collision-Avoidance Assist with Pedestrian, Cyclist and Junction-Turning Detection



Blind-Spot Collision-Avoidance Assist



Rear Cross-Traffic Collision-Avoidance Assist



Driver Attention Warning



Lane Following Assist



Lane Departure Warning with Lane Keeping Assist



High Beam Assist



Rear Occupant Alert



Adaptive Cruise Control with traffic stop and go



Safe Exit Warning



Seatbelt reminder (all seats)



Intelligent Speed Limit Assist (ISLA)



Haptic steering wheel feedback

## Available features:



Highway Driving Assist



Ultrasonic Rear Occupant Alert



Parking Distance Warning – Forward/Reverse



Parking Collision-Avoidance Assist – Reverse



Blind View Monitor



# Find the TUCSON that is right for you.

## Preferred AWD

Standard equipment includes:

### Performance features:

- 2.5L Smartstream GDI + MPI 4-cylinder engine
- Engine idle stop and go
- 8-speed automatic transmission
- Drive Mode Select

### Exterior features:

- 17" alloy wheels
- LED headlights
- LED daytime running lights
- Automatic headlights
- Acoustically laminated windshield
- Solar windshield and front glass
- Heated power-adjustable side mirrors
- Body-coloured side mirrors with turn signal indicators and door handles
- Satin silver upper door mouldings
- Roof side rails
- Rear privacy glass
- Aero wiper blades

### Interior features:

- 10.25" colour touch-screen with wired Apple CarPlay™, Android Auto™ and navigation system
- Bluetooth® hands-free phone system with voice recognition
- Dual front USB ports (1x power/data and 1x high-power)
- 4.2" colour LCD cluster display
- Heated front seats
- 60/40 split second-row fold-flat seats with recline and centre armrest
- Power door locks
- Hidden under-floor storage
- BlueLink® connected vehicle system
- SiriusXM™ radio
- Proximity keyless entry with push-button ignition and remote start
- Heated steering wheel
- Leather-wrapped steering wheel and shift knob
- Second-row HVAC vents
- Premium cloth seating surfaces
- Power windows with front auto-up/down and pinch protection
- Illuminated sunvisor vanity mirrors
- Dual-zone automatic climate control with auto-defogger

### Safety features:

- Forward Collision-Avoidance Assist with Pedestrian, Cyclist and Junction-Turning Detection (camera and radar-type system)
- Lane Following Assist
- Lane Departure Warning with Lane Keeping Assist
- High Beam Assist
- Driver Attention Warning
- Safe Exit Warning
- Adaptive Cruise Control with traffic stop and go
- Blind-Spot Collision-Avoidance Assist
- Rear Cross-Traffic Collision-Avoidance Assist
- Electronic parking brake with automatic vehicle hold
- Rear Occupant Alert
- Rearview camera
- Seatbelt reminder (all seats)
- Intelligent Speed Limit Assist (ISLA)
- Haptic steering wheel feedback
- Tire Pressure Monitoring System
- Tire mobility kit
- Airbags (8) — Advanced front (2), Driver and front passenger side-impact (thorax) (2), side air curtains (front and rear) with rollover sensors (2), rear side (2); Occupant classification system (OCS) seat weight sensor and seat track sensor

### Optional Trend package:

- Panoramic sunroof
- Smart power tailgate
- Leatherette seating surfaces
- Rain-sensing windshield wipers
- LED tail lights
- Auto-defogging windshield system
- 8-way power-adjustable driver's seat with lumbar support
- Dual rear USB charge port
- LED map and personal lights
- Dark chrome exterior trims, front grille, bumper trims, mirror base
- Hidden LED daytime running lights, dark chrome housing
- Silver-painted front and rear skid plates
- Glossy black door frame mouldings
- Fabric-covered dashboard and door trims

## N Line Hybrid AWD

Includes Preferred AWD with Trend package standard equipment plus:

### Performance features:

- Smartstream 1.6L Turbo GDI Hybrid 4-cylinder engine
- 44.2 kW electric motor with 1.49 kWh lithium-ion battery
- 6-speed hybrid automatic transmission
- Button-type shift-by-wire gear selector with paddle shifters
- Regenerative braking system

### Exterior features:

- N Line-exclusive 19" alloy wheels
- N Line-exclusive front bumper fascia and grille
- N Line-exclusive rear bumper with diffuser
- N Line-exclusive LED reverse lights
- N Line-exclusive rear spoiler
- N Line-exclusive side garnish, body-coloured
- N Line-exclusive, glossy black side mirrors and upper door mouldings
- N Line-exclusive single twin-tip exhaust outlet

### Interior features:

- 10.25" full digital instrument cluster
- Bose® premium audio system with 8 speakers
- Interior ambient lighting (64 colours)
- Cloth and leather combination seats
- Aluminum sport pedals
- Deluxe door scuff plates
- Red interior accents and stitching
- Black cloth headliner

## Luxury Hybrid AWD

Includes Preferred AWD with Trend package standard equipment plus:

### Performance features:

- Smartstream 1.6L Turbo GDI Hybrid 4-cylinder engine
- 44.2 kW electric motor with 1.49 kWh lithium-ion battery
- 6-speed hybrid automatic transmission
- Button-type shift-by-wire gear selector with paddle shifters
- Regenerative braking system

### Exterior features:

- 19" alloy wheels

### Interior features:

- 10.25" full digital instrument cluster
- Bose® premium audio system with 8 speakers
- Interior ambient lighting (64 colours)
- Heated rear seats
- Electrochromic auto-dimming rearview mirror with integrated HomeLink® transceiver

### Safety features:

- Ultrasonic Rear Occupant Alert
- Parking Distance Warning — Reverse

## Ultimate Hybrid AWD

Includes Luxury Hybrid AWD standard equipment plus:

### Exterior features:

- Remote Smart Parking Assist
- Premium projector LED headlights

### Interior features:

- Wireless charging pad<sup>†</sup>
- Driver's integrated memory system (seat only)
- 8-way power-adjustable front passenger's seat
- Ventilated front seats
- Personalized user profile settings
- Surround view monitor
- Leather seating surfaces

### Safety features:

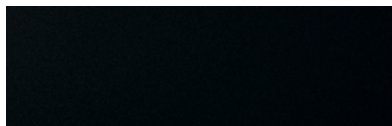
- Blind View Monitor
- Highway Driving Assist
- Parking Distance Warning — Forward/Reverse
- Parking Collision-Avoidance Assist — Reverse

### Optional Plug-in Hybrid powertrain:

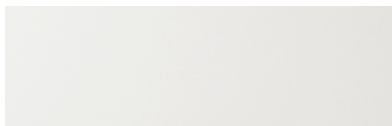
- Smartstream 1.6L Turbo GDI Plug-in Hybrid 4-cylinder engine
- 66.9 kW electric motor with 13.8 kWh lithium-ion battery

# Colours and wheels.

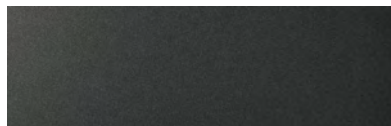
## Exterior colours\*



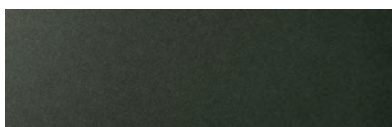
**Ash Black**



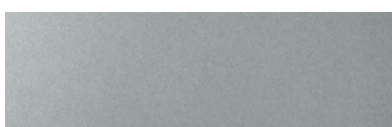
**Crystal White**



**Titan Grey**



**Amazon Grey**  
Not available on N Line model

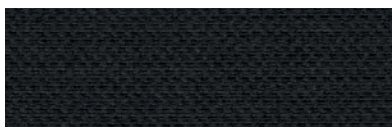


**Shimmering Silver**  
Not available on N Line model



**Deep Sea Blue**  
Not available on N Line model

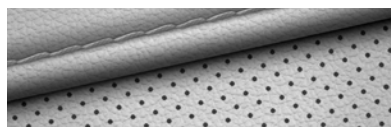
## Interior colours\*



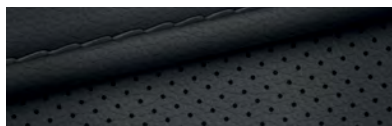
**Black cloth**  
Standard on Preferred model



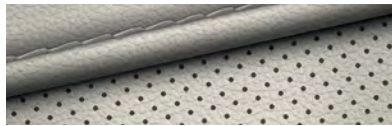
**Black leatherette**  
Available on Trend and Luxury models



**Light grey leatherette**  
Available on Luxury model



**Black leather**  
Standard on Ultimate model



**Light grey leather**  
Available on Ultimate model  
(Ash Black, Crystal White, Amazon Grey and Deep Sea Blue exterior colours only)



**Black leather and cloth with red stitching**  
Standard on N Line model

## Wheels



**17" alloy wheel**  
Standard on Preferred model



**19" alloy wheel**  
Standard on N Line model

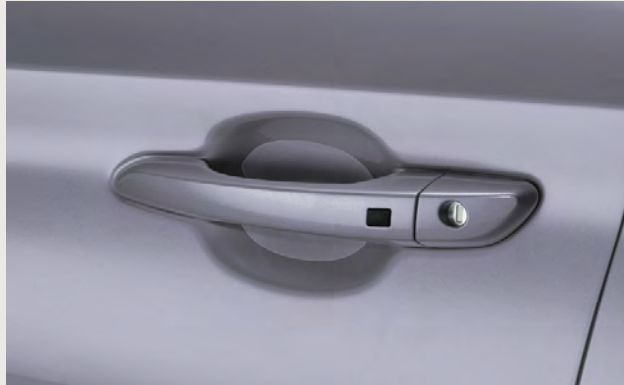


**19" alloy wheel**  
Standard on Luxury and Ultimate models

\*Exterior and interior colour options and/or availability may change without notice. Choice of interior colour is dependent on model and/or exterior colour selection. Colours shown are for reference only and may vary from the actual hue. Visit [hyundaicanada.com](http://hyundaicanada.com) or see your dealer for details.



# Accessories.



## Door pocket clear film

A clear protective film lies behind the door handle to help prevent paint damage to this commonly scratched area.



## Mud guard kit

Custom-fit mud guards help keep the dirt and debris of everyday driving where it belongs.



## Cargo tray

Add years to the interior of your Hyundai by protecting it from spills and messy loads with a durable, custom-fit cargo tray.



## Premium all-weather floor liners

Premium all-weather floor liners were designed to cover the interior carpet, providing maximum protection against the elements that other mats cannot offer. Their unique and durable design features a non-slip surface for added comfort and a long-lasting premium look. Remove carpet mats prior to installation.



## Multimedia device holder

This multimedia device holder allows your backseat passengers to have in-seat entertainment using a mobile phone or a tablet device. It features 360° rotation to allow use in portrait or landscape layout, hands-free. The included mounting bracket easily fits to the headrest and the device holder is removable when not in use.



## Trailer hitch kit

Designed to meet your towing needs, a Hyundai hitch can accommodate a wide variety of hitch-mounted accessories.

<b>5</b> YEAR	<b>100,000 km</b> Comprehensive Limited Warranty <sup>1</sup>	<b>5</b> YEAR	<b>Unlimited km</b> Roadside Assistance Program <sup>1†</sup>
<b>5</b> YEAR	<b>100,000 km</b> Powertrain Warranty	<b>8</b> YEAR	<b>160,000 km</b> Hybrid System <sup>1††</sup>
<b>5</b> YEAR	<b>100,000 km</b> Emission Warranty		

Dealer stamp

## One of the best-backed warranties in Canada.

You will see that a number of our vehicles have received multiple awards from the most reputable third-party organizations, so you can take their word when it comes to the quality of our vehicles. This quality is equally matched by the quality of our warranty. We stand confidently behind our products to give you ultimate peace of mind with a 5-year/100,000 kilometre Comprehensive Limited Warranty<sup>1</sup>. We also provide a 5-year/Unlimited kilometre Roadside Assistance Program<sup>1†</sup> featuring flat tire changing, lockout service and more. Just one toll-free call away, 24 hours a day.

<sup>™/®</sup>The Hyundai name, logos, product names, feature names, images and slogans are trademarks owned or licensed by Hyundai Auto Canada Corp.. Specifications, features, illustrations, accessories, materials and equipment and all other information shown in this brochure are based on the latest information available at the time of publication. Although descriptions are believed to be correct, accuracy cannot be guaranteed. Hyundai Auto Canada Corp. reserves the right to make any changes or modifications at any time, without notice or obligation, including, without limitation, in colour, specifications, features, accessories, materials, equipment and models. Some vehicles are shown with optional equipment. All Hyundai warranties have no deductible. <sup>1</sup>Hyundai's Comprehensive Limited Warranty coverage covers most vehicle components against defects in workmanship under normal use and maintenance conditions. <sup>1†</sup>Hyundai's 24-Hour Roadside Assistance Program is a limited service and does not cover certain costs or expenses. Roadside Assistance is not a warranty.

<sup>1††</sup>Hybrid System includes Hybrid Battery Pack Assembly, Hybrid Starter and Generator, Hybrid Power Control Unit and Auto Transmission including Traction Motor. <sup>\*</sup>Cargo capacity is model dependent: model with 2.5L engine — 1,095 L/2,119 L with rear seats folded down; model with 1.6L Turbo Hybrid engine — 1,097 L/2,108 L with rear seats folded down; model with 1.6L Turbo Plug-in Hybrid engine — 902 L/1,876 L with rear seats folded down.

<sup>†</sup>Apple CarPlay<sup>™</sup> may not be available on all devices and may not be available in all countries or regions. Visit [www.apple.com](http://www.apple.com) for further details and any applicable limitations. Apple and Apple CarPlay are trademarks of Apple Inc.. <sup>††</sup>Android Auto may not be available on all devices and may not be available in all countries or regions. Visit [www.android.com](http://www.android.com) for further details and any applicable limitations. Android and Android Auto are trademarks of Google Inc.. <sup>†††</sup>Vehicle is equipped with the ability to access SiriusXM radio. Does not include subscription. The SiriusXM<sup>™</sup> name is a trademark of SiriusXM Satellite Radio Inc.. <sup>††††</sup>Available on select models only. <sup>†††††</sup>Bluelink<sup>®</sup> includes 3 years of service without charge. The Bluelink service is available for new vehicle purchases and leases subject to the Bluelink subscription terms and conditions. Only use Bluelink and corresponding devices when safe to do so. Cellular and GPS coverage is required. Features, specifications, and fees may vary by model and are subject to change. For more on details and limitations, visit [hyundaicanada.com](http://hyundaicanada.com) or your authorized Hyundai dealer. <sup>††††††</sup>Remote Smart Parking Assist (RSPA) can assist with parking the vehicle. RSPA may not function correctly if one or more of the parking sensors is damaged, dirty or covered or if weather conditions (heavy rain, snow or fog) interfere with sensor operation. RSPA will not assist in parallel parking and can only assist in moving the vehicle in a parking spot forwards and backwards. To operate the RSPA, the operator must be outside of the vehicle but within a range of 13 feet of the vehicle. Always inspect the parking area with your own eyes for any potential hazards, dangers or safety issues. Operator remains responsible to stop the vehicle to avoid a collision or accident. Operator is responsible for ensuring the safe operation of the feature and ensuring that the parking area is free from obstacles, pedestrians, etc. See Owner's Manual for further details and limitations. <sup>†††††††</sup>Blind View Monitor (BVM) assists the driver in changing lanes by providing a live view of the blind spots on either side of the vehicle and an audible alert if another vehicle is detected. Turn signal must be activated and other system limitations apply. Do not rely exclusively on BVM. It is the driver's responsibility to be aware of surroundings and ensure they are clear before changing lanes or directions. See Owner's Manual for more information. <sup>††††††††</sup>Not all devices will be compatible. See Owner's Manual for further details. Bluetooth<sup>®</sup> word mark and logos are registered trademarks owned by Bluetooth SIG, Inc.. HomeLink<sup>®</sup> is a registered trademark of Johnson Controls Inc.. Bose<sup>®</sup> is a registered trademark of Bose Corporation. All other trademarks and trade names are those of their respective owners. Some images shown with special graphic effects.

Hyundai Auto Canada Corp.  
[hyundaicanada.com](http://hyundaicanada.com)

