

1975 Safaris

Pontiac's complete line of station wagons.



Grand Safari & Catalina Safari

Pontiac's full-sized station wagons.



2-Seat Grand Safari Wagon.

This year, there are two beautiful new ways to go with a full-sized Pontiac wagon.

Go elegant. With our new 1975 Grand Safari. It has the luxurious appointments of our top-of-the-line Grand Ville Brougham. Plush, hand-fitted seats and carpet. Chestnut woodgrain vinyl applique. Even a new stand-up hood ornament. And new rectangular headlamps.

Or go more economical. With our 1975 Catalina Safari. It comes with a little less luxury than Grand Safari. But with a lower price. Yet it has 105.7 cu. ft. for cargo. Two or three seats for up to nine passengers. And a Glide-away tailgate that never gets in the way. Like Grand Safari.

No matter which new Safari you choose, you'll be getting a wagon with the kind of style, stability and response you expect from a Pontiac. A 400 V-8, power front disc brakes, power steering, Turbo Hydramatic, Pontiac's new Maximum Mileage System and our Radial Tuned Suspension with steel-belted radial tires.

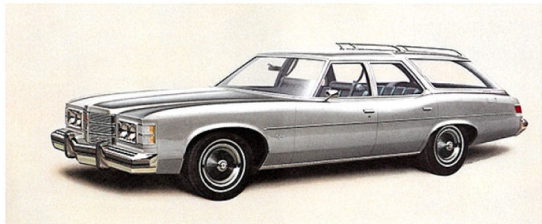
1975 Grand Safari or Catalina Safari. Both are full-sized wagons that never forget they're Pontiacs.



All this elegance in a station wagon? Grand Safari's standard cloth and Morrokide upholstery in saddle tweed.



Sit back and relax. Catalina Safari's all-Morrokide upholstery. Shown in saddle—also available in blue, green and burgundy.



3-Seat Catalina Safari Wagon.

GRAND SAFARI & CATALINA SAFARI FACTS AND FIGURES

MODELS

2-Seat Grand Safari, 3-Seat Grand Safari,
2-Seat Catalina Safari, 3-Seat Catalina Safari.

POWER TEAMS (See chart on back)

STANDARD INTERIOR FEATURES

Standard Catalina Safari Features

All-Morrokide upholstery. Dark flame chestnut vinyl accents on instrument panel. Deluxe steering wheel. High-low ventilation. Split-back second seat with forward-facing third seat in 3-Seat Safari. Cut-pile carpet. Under-floor storage compartment. Spare tire removal assist strap. Driver's ash tray and glove box lamps.

Special Grand Safari Features

Cloth and Morrokide or all-Morrokide Grand Ville Brougham upholstery. Full-width front seat with fold-down center armrest. Custom pedal trim plates. Custom cushion steering wheel. Electric clock. Instrument panel courtesy lamps. Carpeted cargo area and lower door panels. Driver and passenger instrument panel ash tray lamps. Pull straps on doors.

STANDARD EXTERIOR FEATURES

Standard Catalina Safari Features

Front and rear bumper systems using energy absorbers. Concealed windshield wipers. Windshield radio antenna. Vertical rub strips on tailgate with reflective outer strips. Glide-away tailgate with power operated window. Right-hand outside mirror. Moldings on windshield, rear quarter windows, tailgate window, rear edge of hood and rocker panels.

Special Grand Safari Features

Grand Safari deluxe wheel covers, grille and hood ornament. Body color door handle inserts. Rectangular headlamps. Wraparound park and signal lamps. Hood, side window and wheel opening moldings. Extra-wide rocker panel moldings.

STANDARD CHASSIS FEATURES

Variable-ratio power steering. Power front disc brakes, rear drum brakes. Radial Tuned Suspension with GM specification steel-belted radial tires. Computer-selected springs. Modified frame for smooth, tuned ride. Front coil springs with a specifically tuned rear leaf-spring suspension. Pontiac's Maximum Mileage System requires unleaded fuel and includes: High Energy Electronic Ignition, catalytic converter, improved torque converter and L78-15 GM specification steel-belted radial tires. (We call it our Maximum Mileage System because it represents the most advanced engineering and technology Pontiac can offer on 1975 model cars.)

DIMENSIONS AND CAPACITIES (See charts on back)

Grand LeMans Safari & LeMans Safari

Pontiac's mid-sized station wagons.



2-Seat Grand LeMans Safari Wagon.



Grand LeMans Safari's available 60/40 seat. Shown in saddle—also available in white, blue and burgundy.



LeMans Safari's standard all-Morrokide upholstery. Shown in white—also available in saddle, blue, green and burgundy.

What's so grand about our brand-new Grand LeMans Safari wagon?

If it were any more luxurious, we'd have to call it a limousine. The new seats, carpet, instrument panel and sound insulation are the finest we've ever put in a mid-sized wagon. You can even order bucket seats, a center console and wood-grain vinyl siding.

But all that elegance won't interfere with your driving. Because Grand LeMans Safari is a Pontiac all the way. A 400 V-8, Turbo Hydra-matic, power front disc brakes, power steering, a new Maximum Mileage System and our great Radial Tuned Suspension with steel-belted radial tires are all standard.

Which means the new Grand LeMans Safari takes on roads like a Pontiac should. For taking on cargo, there are 85.1 cu. ft. to fill. In 2- or 3-seat models.

Now, if Grand LeMans Safari is a little more than you need, take a close look at our new '75 LeMans Safari.

The room and running gear are the same. It just comes with a few less frills. And a lower price.

LeMans Safari or Grand LeMans Safari. Either way, you'll get the room of a wagon...and the performance of a Pontiac.



3-Seat LeMans Safari Wagon.

GRAND LEMANS SAFARI & LEMANS SAFARI FACTS AND FIGURES

MODELS

2-Seat and 3-Seat Grand LeMans Safaris.
2-Seat and 3-Seat LeMans Safaris.

POWER TEAMS (See chart on back)

STANDARD INTERIOR FEATURES

Standard LeMans Safari Features

All-Morrokide upholstery. Dark flame chestnut vinyl accents on instrument panel. Deluxe 2-spoke steering wheel. High-low ventilation. Rear-facing third seat in 3-Seat Safari. Cut-pile carpet. Textured steel cargo floor with special vinyl panel. Under-floor storage compartment. Spare tire removal assist strap.

Special Grand LeMans Safari Features

Grand LeMans instrument panel and interior trim with full-width notchback or bucket front seats. Custom cushion steering wheel. Custom pedal trim plates. Ash tray and glove compartment lamps. Dome lamp switches on all doors. Carpeted cargo area. Carpeted lower door panels (N.A. at start of production). Added acoustical insulation.

STANDARD EXTERIOR FEATURES

Standard LeMans Safari Features

Front and rear bumper systems using energy absorbers. Concealed windshield wipers. Windshield radio antenna. Vertical rub strips on tailgate. Lift-type tailgate. Front bumper guards. Windshield, rear quarter window, tailgate window, roof drip and rocker panel moldings.

Special Grand LeMans Safari Features

Grand LeMans grille and hood ornament. Deluxe wheel covers. Body color door handle inserts. Hood rear edge, windowsill and wheel opening moldings.

STANDARD CHASSIS FEATURES

Power front disc brakes, rear drum brakes. Radial Tuned Suspension with GM specification steel-belted radial tires. Computer-selected springs. Perimeter frame for smooth, tuned ride. 4-wheel, coil-spring suspension. Pontiac's Maximum Mileage System requires unleaded fuel and includes: High Energy Electronic Ignition, catalytic converter, improved torque converter and HR78-15 GM specification steel-belted radial tires. (We call it our Maximum Mileage System because it represents the most advanced engineering and technology Pontiac can offer on 1975 model cars.)

DIMENSIONS AND CAPACITIES (See charts on back)

Astre SJ Safari & Astre Safari

Pontiac's subcompact station wagons.



Pontiac's brand-new subcompact Astre Safari. Is it really a station wagon?

After all, whoever heard of a wagon that seats just four, has a short 97-in. wheelbase, bucket seats, a floor-shifted 3-speed and a stingy overhead cam engine?

Furthermore, the low-priced Astre Safari has a standard interior that looks like extra cost.

The sporty Astre GT Safari gets a 2-bbl. carburetor, Rally wheels and gauges, a stiffer suspension, steel-belted radials, our Maximum Mileage System and some very sporty trim.

The luxurious Astre SJ Safari has our Radial Tuned Suspension with steel-belted radial tires. New finned Rally III wheels. Rally gauges. A 4-speed. And what has to be one of the plushiest interiors ever put in an American subcompact.

So what are the Astre Safaris doing in our station wagon catalog?

Well, their second seats flip down like wagons. They carry 46.6 cu. ft. of cargo like wagons. And you can order them with woodgrain vinyl wagon siding.

New Astre Safari. Is it a wagon? Or a sharp little sports machine?

You decide.



This is the standard cloth and Morrokide upholstery in Astre SJ Safari. Shown in burgundy—also available in blue and black.



Astre Safari's standard all-Morrokide upholstery. Shown in saddle —also available in black, burgundy, sandstone and white.



Astre Safari Wagon.

ASTRE SJ SAFARI & ASTRE SAFARI FACTS AND FIGURES

MODELS

2-Seat Astre SJ Safari, 2-Seat Astre Safari.

POWER TEAMS (See chart on back)

STANDARD INTERIOR FEATURES

Standard Astre Safari Features

Cloth and Morrokide or all-Morrokide upholstery. Mahogany vinyl accents on instrument panel. Bucket seats. Map pockets in doors. Folding rear seat. Deluxe 2-spoke steering wheel. Cut-pile carpet. Carpeted cargo area. Under-floor storage compartment.

Special Astre SJ Safari Features

Special cloth and Morrokide upholstery. Special bucket seats. Rally gauges, including tachometer, water temperature, voltmeter and electric clock. Cut-sum cushion steering wheel.

STANDARD EXTERIOR FEATURES

Standard Astre Safari Features

Anodized aluminum front and rear bumper systems using energy absorbers. Vertical rub strips on tailgate. Windshield, side window, rear quarter window, rear window and roof drip moldings.

Special Astre SJ Safari Features

Rally III wheels. Body color sport mirrors, left-hand remote control. Body color door handle inserts. Rubber bumper strips. Wheel opening and rocker panel moldings.

STANDARD CHASSIS FEATURES

Standard Astre Safari Features

Front disc brakes with audible wear indicators, rear drum brakes. Computer-selected springs. Integral body frame. 4-wheel, coil-spring suspension.

Special Astre SJ Safari Features

Radial Tuned Suspension with GM specification BR78-13 steel-belted radial tires. Pontiac's Maximum Mileage System requires unleaded fuel and includes: High Energy Electronic Ignition, catalytic converter and BR78-13 GM specification steel-belted radial tires. (We call it our Maximum Mileage System because it represents the most advanced engineering and technology Pontiac can offer on 1975 model cars.)

DIMENSIONS AND CAPACITIES (See charts on back)

Grand Safari & Catalina Safari	
Standard Engine	Transmission
400-cu.-in. 4-bbl. V-8 (1)	Turbo Hydra-matic
Available Engine	
458-cu.-in. 4-bbl. V-8	Turbo Hydra-matic

Grand LeMans Safari & LeMans Safari	
Standard Engine	Transmission
400-cu.-in. 2-bbl. V-8 (1)	Turbo Hydra-matic
Available Engine	
400-cu.-in. 4-bbl. V-8	Turbo Hydra-matic

Astré SJ Safari & Astré Safari	
Standard Engine	Standard Transmission
140-cu.-in. 1-bbl. 4-cyl. (1) (2)	3-speed manual (3)
Available Engine	Available Transmissions
	4-speed manual,
	Turbo Hydra-matic

140-cu.-in. 2-bbl. 4-cyl.

(1) Not available in California. (2) 140-cu.-in. 2-bbl. standard on Astré SJ Safari.

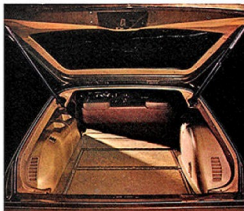
(3) 4-speed manual standard on Astré SJ Safari.

DIMENSIONS (inches)	Grand Safari	Grand LeMans	Astré Safari
	& Catalina Safari	& LeMans Safari	& Astré SJ Safari
Wheelbase	127.0	116.0	97.0
Overall length	231.3	215.4	176.4 (Astré S.J.) 176.4 (Astré)
Overall width	79.6	77.4	65.4
Front tread	63.8	61.6	54.7
Rear tread	64.0	61.1	53.8
Cargo volume (cu. ft.)	105.7	85.1	46.6
Underfloor compartment 2-seat (cu. ft.) (est.)	5.6	9.8	n.a.
Underfloor compartment 3-seat (cu. ft.) (est.)	3.0	5.8	—
Top of front seatback to closed tailgate	94.6	82.9	57.2
Top of second seatback to closed tailgate (2-seat)	55.6	48.7	30.9
Top of second seatback to closed tailgate (3-seat)	57.6	48.7	—
Front seat at floor to closed tailgate	100.5	90.2	65.3
Second seat at floor to end of closed tailgate (2-seat)	58.9	53.9	38.1
Second seat at floor to end of closed tailgate (3-seat)	65.7	53.9	—
Front width of cargo space at floor	63.4	55.0	46.7
Minimum distance between wheelhouses at floor	48.8	44.5	42.5
Rear-end opening width at floor	48.8	61.2	41.4
Rear-end opening width at belt	42.0	62.8	47.0
Maximum cargo height	30.6	30.1	28.6
Maximum height at rear opening (tailgate open)	29.5	27.4	25.7

CAPACITIES	Grand Safari	Grand LeMans	Astré Safari
	& Catalina Safari	& LeMans Safari	& Astré Safari
Fuel tank	22.0 gals.	22.0 gals.	18.0 gals.
Cooling system	21.6 qts.	21.3 qts.	7.6 qts.
Oil, less filter refill	5.0 qts.	5.0 qts.	3.0 qts.



A carpeted warehouse? No, just a look at the kind of cargo space you get in a Grand Safari.



LeMans Safari's cargo area. Haul lots of gear, hide some.



Lots of room for such a little car. The cargo area of Pontiac's new Astré Safari.



With RTS, any road seems easy to handle.

SAFARI WAGON SAFETY FEATURES

Occupant Protection

Seat belts with pushbutton buckles for all passenger positions. Two front combination seat and shoulder belts for driver and right front passenger (with reminder light and buzzer, inertia reel and starter interlock). Two front-seat head restraints. Energy-absorbing steering column. Passenger-guard door locks. Safety door latches and hinges. Folding seat-back latches. Energy-absorbing padded instrument panel and front and intermediate seat-back tops. Contoured windshield header. Thick laminate windshield. Padded sun visors. Safety armrests. Safety steering wheel. Side-guard beams. Contoured roof inner panel.

Accident Prevention

Side marker lights and reflectors (front side marker lights flash with directional signal). Parking lamps that illuminate with headlamps. Four-way hazard warning flasher. Backup lights. Lane-change feature in direction signal control. Windshield defrosters, washers and dual-speed wipers. Wide-view inside mirror (vinyl edged, shatter-resistant glass and deflecting support). Outside rearview mirror (driver side and passenger side on Safari and Grand Safari). Dual master cylinder brake system with warning light. Starter Safety Switch. Dual-action safety hood latches (except Astré).

Anti-Theft

Anti-theft ignition key reminder buzzer. Anti-theft steering column lock. Inside hood latch release.

Shown on the cars and described in this catalog are some of the many options and accessories offered by Pontiac. They're available at extra cost, and well worth it in driving comfort and convenience. Pontiac Motor Division of General Motors Corporation reserves the right to make changes at any time, without notice, in colors, equipment, specifications, prices and models—and also to discontinue models. The right is also reserved to change any specifications, parts or equipment at any time without incurring any obligation to equip same on cars built prior to date of such change.

Pontiac Motor Division, General Motors Corporation, One Pontiac Plaza, Pontiac, Michigan 48053.

Like no S.A.A.

