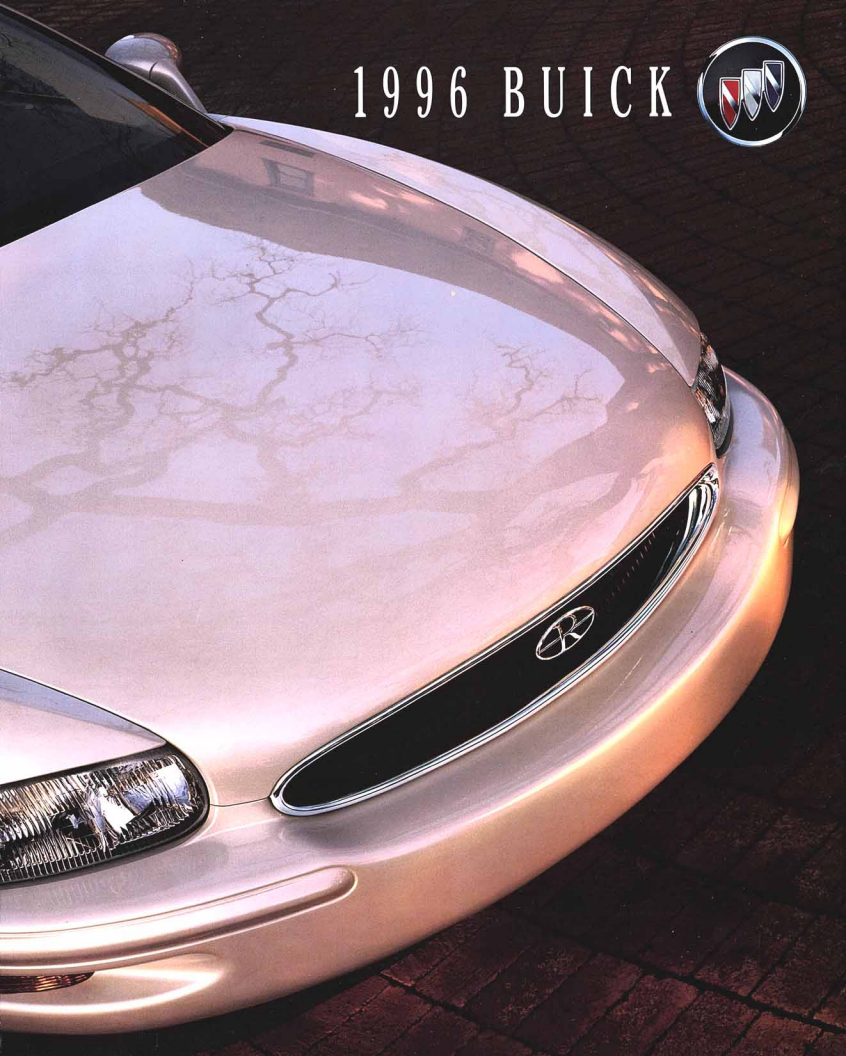


1996 BUICK



RIVIERA Expressive, sleek and comfortable driving enjoyment. Page 4

PARK AVENUE ULTRA Sophisticated comfort, luxury and performance. Page 20

PARK AVENUE A beautiful reflection of earned success. Page 30

ROADMASTER Spacious luxury in a superior full-size motorcar. Page 40

LE SABRE A most attractive balance of quality, safety and value. Page 54

REGAL The ideal combination of comfort and performance. Page 66

CENTURY The award-winning reputation continues. Page 80

SKYLARK Peace of mind, power and Buick quality. Page 90

SAFETY Another area of Buick leadership. Page 106

PHILOSOPHY

Buick quality is the constant in every decision made to advance the tri-shield. It is never so simple a goal as merely meeting expectations, but a firm mandate to exceed them. Therefore, it is ongoing and extends far beyond fit, finish and the precision of moving parts. Buick quality means premium automobiles that continue to exhibit durability, meaningful luxury and superb engineering well beyond normal assumptions. Safety is as much a component of Buick quality as are graceful styling, generous comfort and genuine concern for the environment. And your continued satisfaction is its reason for existence.



RIVIERA Expressive, sleek and comfortable driving enjoyment. Page 14

PARK AVENUE ULTRA Sophisticated comfort, luxury and performance. Page 20

PARK AVENUE A graceful reflection of earned success. Page 30

ROADMASTER Spacious, roomy, superior full-size motor car. Page 40

LE SABRE The elegant, sophisticated, full-size executive. Page 54

REGAL A real comfort in a roomy, roomy car. Page 64

CENTURY The road with a gentleman's contents. Page 74

SKYLARK Peace of mind, power and Buick quality. Page 90

SAFETY Another area of Buick leadership. Page 106

Buick quality is the constant in every decision made to advance the tri-shield. It is never so simple a goal as merely meeting expectations, but a firm mandate to exceed them. Therefore, it is ongoing and extends far beyond fit, finish and the precision of moving parts. Buick quality means premium automobiles that continue to exhibit durability, meaningful luxury and superb engineering well beyond normal assumptions. Safety is as much a component of Buick quality as are graceful styling, generous comfort and genuine concern for the environment. And your continued satisfaction is its reason for existence.

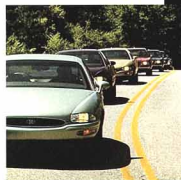




The story behind the tri-shield.

Times, and technology, have changed since the dramatic dream of David Dunbar Buick almost a century ago—but the vision has not. It still sets the stage for innovation and the unchanging pursuit of quality that continue to earn Buick Motor Division its place of honor in automotive history.

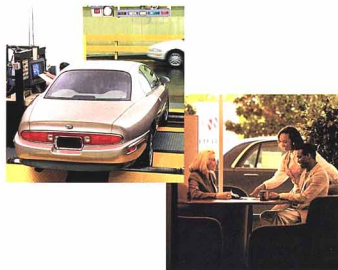
Safety is integral to the vision of Buick quality and an entire engineering group is dedicated to it. See pages 106 through 111 for reassurance of Buick's continuous commitment to your safety and security.



That's comfort for you. The Seat Comfort Team includes a physical therapist and Buick seating engineers, as well as men and women of various sizes, weights and body characteristics. Hundreds of thousands of miles on roads of all kinds resulted in the most advanced seating Buick has ever offered, fitting 95 percent of the U.S. population. Your comfort is important to us.



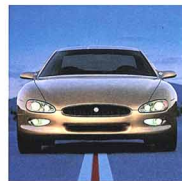
A heritage of quality is assured by such long-lasting touches as stainless steel exhaust systems that fight corrosion and promote long term durability. The value of extensive use of two-sided galvanized steel is reflected in weather-resistant, long lasting good looks. From welding methods to glassy smooth painting techniques to micrometer testing, Buicks are built for lasting pleasure.



Quality beyond craftsmanship is a typical Buick mandate, and it is always evident in the entire production process. The assembly of Buicks is exactly controlled. Constant monitoring and sampling of cars through hundreds of points at all stages of assembly assure you of Buick quality. If it proves inadequate in one of hundreds of rigorous inspections, it does not earn the right to enter your Buick dealership.

Quality Plus is a process as dedicated to building great customer relations as Buick is committed to building premium motorcars. It starts with the delivery, and guarantees that your new Buick is completely ready to drive away, with all your questions answered. And it includes the 3-year or 36,000-mile limited Bumper to Bumper Warranty and Courtesy Transportation for repairs covered by the warranty.

Looking to the future is a Buick trait, and it manifests itself in the actual production of an innovative automobile like the stunning 1996 Riviera. Dramatic auto show concept cars like the XP2000 shown here have a way of becoming real examples of Buick quality.



It's just an emblem, but what an emblem. The tri-shield is the embodiment of a dream that began almost one hundred years ago, and has gained in strength and validity a hundredfold. We take immense pride in what it means—so you can take pride in your Buick.



R I V I E R A

With success, comes a certain freedom and selectivity. And there's a car that calls for the attention of the true individual at that level. It is sleek and powerful. It is extremely comfortable, agile and spacious, with superior structural integrity. And...it is fun. It is the 1996 Buick Riviera.



*Fun to drive and
beautiful to look at.
Riviera is available
in five new colors,
including Medium
Autumn Green Metallic.*

R I V I E R A

A sense of tremendous stability enhances the Riviera handling experience.

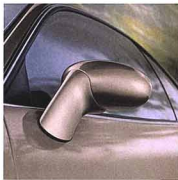


The agility of four-wheel independent suspension teams with magnetic variable effort steering for accurate control.



Expressive individualists will find the 1996 Riviera absolutely irresistible. It was built for them—with a special emphasis on “built.” The structural integrity of this premium personal luxury coupe manifests itself in a stability of ride and sureness of handling that engender a sense of calm and quality. Its body strength is measured at an incredibly high 25 Hz. It is the highest structural integrity of any personal luxury coupe in the world, and it enhances the glidelike feeling of Riviera’s smooth four-wheel independent suspension. The quiet, utterly predictable ride inspires confidence on any road, under virtually any condition.

Advanced structural engineering imparts an enormous feeling of strength and smoothness as part of the overall driving experience.



The beauty of sculpted mirrors is aerodynamic as well as aesthetic.

Riviera’s solid structure results in soothing silence.





R I V I E R A



Available glove-soft leather seating areas and years of research come together in a truly unique and comfortable seat.



Available memory seats and mirrors remember optional Personal Choice settings with the aid of the remote keyless entry.

The most comfortable Buick ever built is not a glib statement—particularly when all Buicks are so generously comfortable. The 1996 Riviera establishes orthopedic superiority, having undergone over 100,000 miles of on-the-road research to attain its present superior level of seating comfort. These seats redefine cross-country comfort, and not just for the few—they are made to fit 95 percent of the U.S. population. The world's most spacious luxury coupe offers amenities which include different temperature settings for the driver and front-seat passenger, and a memory setting with the available heated driver's seat.

Legible gauges and easily reached switches continue Riviera's theme of interior ergonomic excellence.



Standard Delco ETR® AM-FM stereo radio with combination cassette and CD players, graphic equalizer and premium speakers.



Perimeter lighting illuminates exterior for 15 seconds, with remote keyless entry when UNLOCK is pressed.



R I V I E R A



Available glove-soft leather seating areas and years of research come together in a truly unique and comfortable seat.



Available memory seats and mirrors remember optional Personal Choice settings with the aid of the remote keyless entry.

The most comfortable Buick ever built is not a glib statement—particularly when all Buicks are so generously comfortable. The 1996 Riviera establishes orthopedic superiority, having undergone over 100,000 miles of on-the-road research to attain its present superior level of seating comfort. These seats redefine cross-country comfort, and not just for the few—they are made to fit 95 percent of the U.S. population. The world's most spacious luxury coupe offers amenities which include different temperature settings for the driver and front-seat passenger, and a memory setting with the available heated driver's seat.

Legible gauges and easily reached switches continue Riviera's theme of interior ergonomic excellence.



Standard Delco ETR® AM-FM stereo radio with combination cassette and CD players, graphic equalizer and premium speakers.



Perimeter lighting illuminates exterior for 15 seconds, with remote keyless entry when UNLOCK is pressed.



R I V I E R A



The SS45 standard split bench front seat will accommodate three adults.



Dual automatic ComfortTemp climate control varies the temperature for driver and front-seat passenger.

TTrue beauty is found throughout the 1996 Riviera. Some will appreciate the beauty of Buick quality in thoughtful appointments, safety engineering and rich comfort. All will find a form of beauty in the pure enjoyment of Riviera's responsive power and agility. Riviera's beautiful exterior surfaces are reflected in the interior styling surrounding you with a sense of calm efficiency and luxurious well-being. Dual air bags are standard, as are high-strength steel reinforcing beams in the doors and four-wheel power disc brakes with an anti-lock braking system (ABS). Riviera's beauties are seen and unseen—and many.

The sleek Riviera Coupe slices through the wind almost effortlessly with its standard 205-horsepower V6.



Remote keyless entry system locks, unlocks doors, unlatches trunk, all from up to 30 ft away.



The security system can be activated to flash lights and honk horn.

R I V I E R A

The heated seat option provides seat warmth on cold mornings.



Available automatically dimming rearview mirror subdues annoying bright lights from behind.



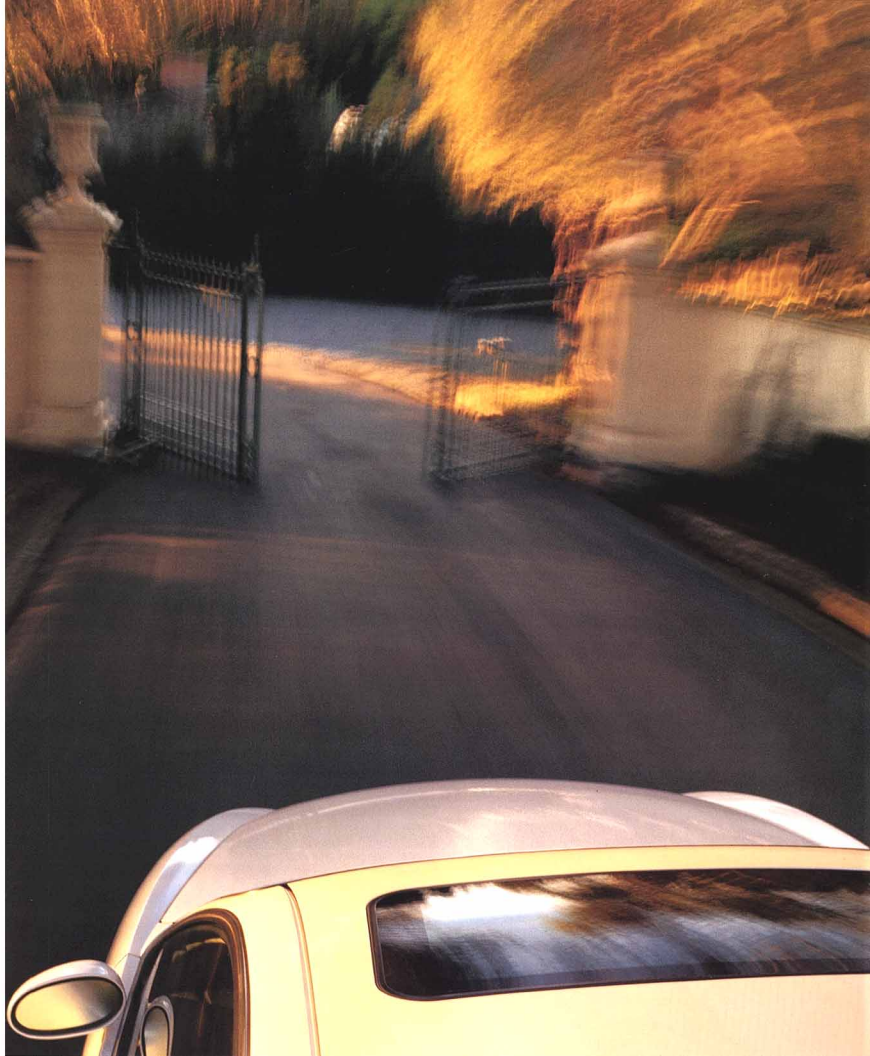
It looks beautiful. It feels even better. The world's most spacious luxury coupe has no room for compromise where your driving enjoyment is concerned. Sink into the Comfort Team–designed lumbar-supportive seat, turn on the Concert Sound and the powerful 3800 Series II V6, or the available 3800 Series II Supercharged V6. Four-wheel independent suspension and magnetic variable effort steering mesh to handle road conditions and curves gracefully. Riviera invites driving with no destination in mind. Smoothness, control, spirited performance—just a few of the benefits of Riviera's driving experience.

Optional Astrorof with power sunshade is aerodynamically integrated for quiet, open-air use.

The 3800 Series II Supercharged engine maintains six-cylinder fuel efficiency while delivering 240 horsepower.



The optional Universal Transmitter garage door opener can also be programmed to turn on house lights.



STANDARD AND AVAILABLE EQUIPMENT*	
(S) standard, (A) available	Coupe
Mechanical	
Battery – heavy-duty with Rundown Protection	S
Brakes – anti-lock, 4-wheel power disc	S
Cooling – heavy-duty, engine and transmission	S
Drive – front-wheel	S
Engine – 3800 Series II V6	S
Engine – 3800 Series II Supercharged V6 (includes 16" aluminum PF4 wheels and Eagle GA touring tires)	A
Engine block heater	A
Exhaust system – dual, stainless steel	S
Fuel filler door release – electric, remote	S
Hood lock – inside release	S
Horn – dual-note	S
Remote keyless entry	S
Retained accessory power	S
Steering – magnetic variable effort	S
Suspension – automatic level control	S
Suspension – 4-wheel independent	S
Theft-deterrent system – PASS-Key® II	S
Transmission – electronically controlled 4-speed automatic with overdrive	S
Wipers – 2-speed with low-speed delay	S
Interior	
Air bags – driver and right front-seat passenger Supplemental Restraint System (SRS)	S
Air conditioning – dual automatic ComfortTemp climate control	S
Air conditioning – rear-seat ComfortTemp	S
Armrest – front-seat storage with dual cup holders	S
Assist handles – two, located above doors	S
Carpet savers – front and rear	S
Carpeting – plush, front and rear	S
Console – overhead (includes front-seat reading lights and garage door opener compartment)	S
Delogger – electric, rear-window	S
Delogger – front and side window outlets	S
Door locks – memory, automatic power with lockout protection and selectable delayed locking	S
Electronic warning tones – safety belts; ignition key; headlamps, turn signal, parking brake "on"	S
Heated driver seat with memory driver and passenger outside mirrors and driver seat controls	A
Instrumentation – speedometer; tachometer; temperature gauge; trip odometer; indicators for low oil pressure, low voltage, and low washer fluid, oil, fuel, and coolant levels	S
Lamp – center high-mounted stop	S
Lights – door courtesy and warning with theater dimming, delayed entry and exit lighting	S
Lights – front ashtray, glove box, engine compartment, trunk compartment, instrument panel courtesy, instrument panel and theater dimming	S
Mirror, visor vanity – lighted, passenger	S
Safety belts – front and rear-seat lap/shoulder with seatbelt comfort adjuster and slack set	S
Seats – cloth, power, reclining 55/45 split bench with front storage armrest	S
Seats – leather bucket with 6-way power, recliners and operating console	A
Seats – leather 55/45 split bench	A
Seats – 6-way power, driver and passenger	S
Speakers – 6-speaker Concert Sound II	S
Steering column – Tilt-Wheel™ adjustable	S
Steering wheel – leather-wrapped (with SRS**)	S
Sunshades – front, supplemental, extendable	S
Trunk convenience net	S
Trunk lock release – electric, remote with security switch	S
Trunk trim – deluxe	S
Exterior	
Astroroof – electric sliding with sunshade	A
Glass – flush-mounted	S



Riviera Coupe



Supercharged Riviera Coupe

CONTINUED	
(S) standard, (A) available	Coupe
Glass – Solar-Ray® solar-control	S
Headlamps – composite tungsten-halogen	S
License plate holder – slide-in rear, front mounted	S
Mirrors, outside rearview – deluxe, electric, body-color, left and right remote with floodlit controls	S
Moldings – belt reveal, wheel opening and rocker panel	S
Moldings – protective, body-color, body-side	S
Paint – clearcoat	S
Tires – P225/60R16 steel-belted, radial-ply, all-season blackwall	S
A) Wheels – 16" aluminum	S
B) Wheels – 16" aluminum PF4	A
C) Wheels – 16" chrome	A

AUDIO SYSTEMS	
Antenna – automatic power	S
Radio – ETR® AM-FM stereo with combination power-loading compact disc and cassette players, automatic tone control, music search, seek/scan, and clock	S

* Partial listing only – See your Buick dealer for complete lists and details.
** Supplemental Restraint System.

OPTION PACKAGE EQUIPMENT	
(SE) Prestige Package	SE
Accessory controls – steering wheel (radio and temperature)	■
Convenience Package – includes Twilight Sentinel®, driver lighted visor vanity mirror, and parade dimming	■
Mirrors – automatic, electrochromic inside and driver outside rearview	■
Seat – power lumbar control, driver	■
Security Package – includes programmable automatic door locks, theft-deterrent system with central unlocking and cornering lamps	■
Stripes – accent	■
Traction control system	■
Universal Transmitter – three-function, remote; replaces garage door opener compartment	■

SPECIFICATIONS	
Engine	
Type	3.8-litre 3800 SF1™ Series II V6
Horsepower	205 @ 5200 rpm
Torque	230 @ 4000 rpm
Type	3.8-litre 3800 SF1™ Series II Supercharged V6
Horsepower	240 @ 5200 rpm
Torque	280 @ 3200 rpm
Towing	
3800 Series II V6	3.05 final drive ratio 1,000 maximum gross trailer rate (lbs) ⁽¹⁾
3800 Series II SC V6	2.53 final drive ratio 1,000 maximum gross trailer rate (lbs) ⁽¹⁾

(1) Sequential-port fuel injection.
(2) When properly equipped. Includes weight of trailer, cargo, passengers and equipment. All towing recommendations are subject to change. Check with your Buick dealer for the latest information. Trailer tongue load should be 10% of the maximum trailer weight but should not exceed the load rating specified for that vehicle, engine or hitch combination.



Capacity	
Trunk, cu ft	17.4
Fuel tank, gal	20.0
Base curb weight, lbs	3,690

Dimensions (inches)	
Length	207.2
Width	75.0
Height	54.6
Wheelbase	113.8
Front tread	62.5
Rear tread	62.6

Interior (inches)	
Legroom	42.6/37.1
Headroom	38.2/36.2
Shoulder room	57.8/57.8
Hip room	54.5/52.7



P A R K A V E N U E U L T R A

The 1996 Park Avenue Ultra is a study in grace and performance—a precise balance of tranquility and exhilaration. The powerful 3800 Series II Supercharged V6 joins with DynaRide® or available Gran Touring suspension and luxurious comfort for the ultimate expression of Buick quality.



P A R K A V E N U E U L T R A



A full line of Delco stereos is available, including combination compact disc and cassette players.



Dual automatic ComfortTemp climate control varies the temperature for driver and front-seat passenger.

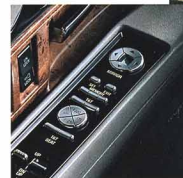
Luxury and function are in concert in the Park Avenue Ultra passenger cabin. Ergonomically designed for ease and efficiency, this interior goes far beyond the bounds of utility. Uncompromised luxury is evident in the available driver and passenger heated seats, taking the edge off a chilly day or providing added comfort on long trips. The six-way power front seats include a power reclining feature, and easily adjustable controls. Variable effort power steering, electronic cruise control and available steering wheel radio controls

The sumptuously appointed interior and instrument panel wrap around you with information, control and luxury.

give one a sense of fingertip command of Ultra's responsive power.



Theater dimming provides a pleasing 3-5 second fade of interior courtesy lights.



The Personal Choice option of a memory seat and mirror function is available in Ultra.



P A R K A V E N U E U L T R A



A full line of Delco stereos is available, including combination compact disc and cassette players.

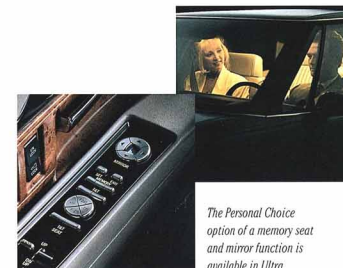


Dual automatic ComfortTemp climate control varies the temperature for driver and front-seat passenger.

Luxury and function are in concert in the Park Avenue Ultra passenger cabin. Ergonomically designed for ease and efficiency, this interior goes far beyond the bounds of utility. Uncompromised luxury is evident in the available driver and passenger heated seats, taking the edge off a chilly day or providing added comfort on long trips. The six-way power front seats include a power reclining feature, and easily adjustable controls. Variable effort power steering, electronic cruise control and available steering wheel radio controls

The sumptuously appointed interior and instrument panel wrap around you with information, control and luxury.

give one a sense of fingertip command of Ultra's responsive power.

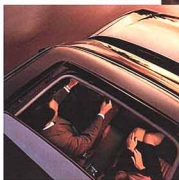


Theater dimming provides a pleasing 3-5 second fade of interior courtesy lights.

The Personal Choice option of a memory seat and mirror function is available in Ultra.

Available Gran Touring Package offers a sportier feel with its stiffer suspension and 16-inch wheels.

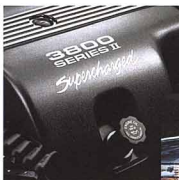
Bring the great outdoors inside with the available sliding glass Astroroof.



The exhilaration of spirited performance in a sophisticated luxury automobile can be one of life's grand pleasures. The 1996 Park Avenue Ultra offers this without reserve. With a 240-horsepower 3800 Supercharged V6 engine and a precision suspension system, a smooth, supple ride and fluid, muscular power are immediately on demand, whatever the conditions. Anti-lock braking (ABS) gives one a feeling of reassurance and control. Ultra's sleek, graceful silhouette was designed for those who prefer elegance to flamboyance. Its handling and performance characteristics also display a polished finesse.

The understated elegance of Ultra's aerodynamic body is a convergence of polish and discretion.

The new 3800 Series II engine employs a larger supercharger to enhance performance.



Magnetic variable effort steering provides fingertip control at any speed.



STANDARD AND AVAILABLE EQUIPMENT*

(S) standard; (A) available	Ultra
Mechanical	
Battery - heavy-duty Delco Freedom II Plus	S
Brake - parking, push to set/release	S
Brakes - anti-lock, power front disc/rear drum	S
Drive - front-wheel	S
Engine - 3800 Series I Supercharged V6	S
Exhaust system - stainless steel	S
Fuel filler door release - electric, remote	S
Hood lock - inside release	S
Horn - 4-note	S
Multifunction control lever - turn signal, headlamp/high/low beam, windshield wiper/washer controls and cruise control	S
Retained accessory power - includes illuminated door locks and light control	S
Security locks - rear-door, child	S
Steering - variable effort, power rack-and-pinion	S
Suspension - automatic level control	S
Suspension - Automatic Ride Control	A
Suspension - DynaRide®	S
Suspension - front and rear independent	S
Suspension - Gran Touring	A
Theft-deterrent system - PASS-Key® II with audible alarm and starter interrupt	S
Traction control system	A
Transmission - electronically controlled 4-speed automatic with overdrive	S
Trip odometer	S
Wipers - 2-speed with low-speed delay feature	S
Interior	
Acoustical Package	S
Air bags - driver and right front-seat passenger Supplemental Restraint System (SRS)	S
Air conditioning - CFC-free, dual automatic ComfortTemp climate control	S
Air conditioning - rear-seat Comfortemp	S
Armrest - front- and rear-seat storage with dual cup holders	S
Assist handles - passenger (2)	S
Automatic programmable memory door locks	S
Carpet smears - front and rear	S
Carpeting - plush, front and rear	S
Console - overhead (includes front-seat reading lights, garage door opener storage and lamp monitors)	S
Cruise control - electronic	S
Defogger - electric, rear-window	S
Defogger - front and side window outlets	S
Electronic warning tone - safety belts; ignition key; headlamps, parking brake "on"	S
Head restraints - adjustable, front-seat	S
Head restraints - rear-seat	S
Instrumentation - analog gauge cluster (includes tachometer; oil-life monitor; trip odometer; and warning indicators for coolant temperature, oil pressure, voltage, and low fuel and oil levels)	S
Lamp - center, high-mounted stop	S
Lights - delayed illuminated entry, interior, and delayed exit	S
Lights - front- and rear-door courtesy and warning	S
Lights - front ashtray, trunk, engine compartment, glove box and instrument panel courtesy	S
Lights - theater dimming, interior	S
Mirror, inside rearview - automatic dimming	S
Mirrors, visor vanity - lighted, driver and passenger	S
Mirrors, vanity - lighted, rear-seat passengers	S
Recliners - electric seatback, driver and passenger	S
Reminder Package - indicators for low washer fluid, low coolant level, door ajar, and trunk ajar	S
Remote keyless entry - programmable, with perimeter lighting, instant alarm and security feedback functions	S
Safety belts - front-seat lap/shoulder belt system with shoulder belt comfort adjuster	S
Safety belts - rear-seat lap/shoulder with child comfort guide	S
Seats - leather/vinyl 55/45 with front-seat shoulder armrest	S
Seats - 6-way power, driver and passenger	S



Park Avenue Ultra

CONTINUED

(S) standard; (A) available	Ultra
Speakers - Concert Sound II	S
Steering column - Tilt-Wheel™ adjustable	S
Steering wheel - leather-wrapped (with SRS**)	S
Sunshades - supplemental, extendable, front	S
Trunk convenience net	S
Trunk lock release - electric, remote with security switch	S
Trunk pull-down - electric	S
Exterior	
Astrorof® - electric, sliding (includes D74; not available with lamp monitors; rear vanity mirrors and reading lights deleted)	A
Bumper guards and protective strips - front	S
Cornering lamps	S
Door edge guards - body-color	S
Glass - Solar-Ray® solar-control	S
Headlamps - wraparound, composite tungsten-halogen	S
Hood lock - inside release	S
Hood ornament - stand-up	S
License plate holder - rear, slide-in	S
Mirrors, outside rearview - deluxe, body-color, electric, left and right remote	S
Moldings - belt reveal, wheel opening, wide body-side and lower panel	S
Moldings - specific, wheel	S
Paint - basecoat-clearcoat with anti-chip lower protection	S
Paint - monotone	A
Stripes - body-side	S
Tires - P215/70R15 steel-belted, radial-ply, all-season whitewall	S
Tires - self-sealing whitewall	A
Trunk trim - full (includes decklid trim)	S
A) Wheels - specific, 15" aluminum	A
B) Wheels - 16" aluminum	A
Windows - power with driver's "express-down" and passenger lockout feature	S

AUDIO SYSTEMS

Antenna - automatic power	S
Radio - ETR® AM-FM stereo with seek and scan, cassette player, 4-speaker system, and clock	S
Radio - ETR® AM-FM stereo with seek and scan, cassette player with auto reverse and search/repeat, automatic tone control, and clock; includes steering wheel radio controls	A
Radio - ETR® AM-FM stereo with seek and scan, compact disc player, automatic tone control, and clock; includes steering wheel radio controls	A
Radio - ETR® AM-FM stereo with seek and scan, combination cassette and compact disc players, automatic tone control, and clock; includes steering wheel radio controls	A

*Partial listing only - see your Buick dealer for complete lists and details.
 **Supplemental Restraint System.

OPTION PACKAGE EQUIPMENT

(SD) Luxury Package; (SE) Prestige Package	SD	SE
Memory driver's seat and mirrors	■	■
Mirror, inside rearview - automatic dimming with compass	■	■
Mirrors, outside rearview - body-color, electric, left and right remote, left and right heated, left automatic day/night	■	■
Radio - ETR® AM-FM stereo with seek and scan, cassette player with auto reverse and search/repeat, automatic tone control and clock; includes steering wheel radio controls	■	■
Seats - heated, driver and passenger	■	■
Suspension - Automatic Ride Control	■	■
Tires - P215/70R15 self-sealing whitewall	■	■
Traction control system	■	■
Trunk mat	■	■

SPECIFICATIONS

Engine	
Type	3.8-litre 3800 SFI ⁽¹⁾ Series II Supercharged V6
Horsepower	240 @ 5200 rpm
Torque	280 @ 3200 rpm

Towing	
3800 Series II SC V6	2.93 final drive ratio
	1,000 maximum gross trailer rate (lbs) ⁽²⁾⁽³⁾
	3,000 maximum gross trailer rate (lbs) ⁽²⁾⁽³⁾

(1) Sequential-port fuel injection.

(2) When properly equipped. Includes weight of trailer, cargo, passengers and equipment. All towing recommendations are subject to change. Check with your Buick dealer for the latest information. Trailer tongue load should be 10% of the maximum trailer weight but should not exceed the load rating specified for that vehicle, engine or hitch combination.

(3) Requires Class II frame-mounted trailer hitch.



Capacity	
Trunk, cu ft	20.3
Fuel tank, gal	18.0
Base curb weight, lbs	3,642

Dimensions (inches)	
Length	205.9
Width	74.1
Height	55.1
Wheelbase	110.8
Front tread	60.4
Rear tread	60.6

Interior (inches)	
Interior	front/rear
Legroom	42.7/40.7
Headroom	38.9/37.9
Shoulder room	58.7/58.9
Hip room	55.1/54.2



30

P A R K A V E N U E

In a quiet reflection of well-earned success, the 1996 Park Avenue offers meaningful and balanced luxuries: power balanced by efficiency; comfort and safety for six balanced by spirited performance; a graceful, stunning exterior balanced by a solid, strong chassis. All, balanced by Buick quality.

P A R K A V E N U E



Available remote keyless entry locks, unlocks car, turns on lights, opens trunk, and activates instant alarm feature.



Available dual automatic ComfortTemp varies temperature for driver and front-seat passenger.

With a reputation for quality, the Park Avenue has earned many awards and tributes. You'll see why when you slip into the roomy interior, and turn the key, awakening the quiet, muscular 205-horsepower 3800 Series II V6. This 1996 Park Avenue was made to please the hard-to-please. Silence in motion, a glassy-smooth ride, the option of temperatures that vary between driver and front-seat passenger, highly legible gauges, sumptuous optional leather seating areas, deeply generous comfort throughout—all this and more will assure

Park Avenue surrounds you with luxury and control—the instrument panel wraps from door to door, with easily reached switches, and bold analog gauges.

you that you have chosen a gratifying personal reward in Park Avenue.



Radio controls are at your fingertips with available steering wheel controls.

Available perimeter lighting is activated by pressing UNLOCK on remote keyless entry.





P A R K A V E N U E



Available remote keyless entry locks, unlocks car, turns on lights, opens trunk, and activates instant alarm feature.



Available dual automatic ComfortTemp varies temperature for driver and front-seat passenger.

With a reputation for quality, the Park Avenue has earned many awards and tributes. You'll see why when you slip into the roomy interior, and turn the key, awakening the quiet, muscular 205-horsepower 3800 Series II V6. This 1996 Park Avenue was made to please the hard-to-please. Silence in motion, a glassy-smooth ride, the option of temperatures that vary between driver and front-seat passenger, highly legible gauges, sumptuous optional leather seating areas, deeply generous comfort throughout—all this and more will assure

you that you have chosen a gratifying personal reward in Park Avenue.

Park Avenue surrounds you with luxury and control—the instrument panel wraps from door to door, with easily reached switches, and bold analog gauges.



Radio controls are at your fingertips with available steering wheel controls.

Available perimeter lighting is activated by pressing UNLOCK on remote keyless entry.

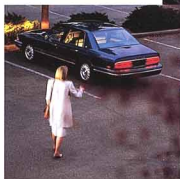


P A R K A V E N U E

Available heated outside mirrors offer improved vision in adverse weather.



An instant alarm is a security feature of the remote keyless entry.



Gratification and protection are to be expected in a premium motorcar. Both will be found in the 1996 Park Avenue. Relax into its surefootedness and agility, its strength and powerful responsiveness. Unitized body construction helps protect occupants with a safety cage network—crumple zones help absorb impact. Advanced steering, suspension and anti-lock braking erase intimidation from twisting roads and weather. The linear power of its 205-horsepower 3800 Series II V6 is at instant command for passing and maneuvering. And you can safely assume that peace of mind is engineered into all facets of Park Avenue.

Refined, aerodynamic lines, extraordinary performance and handling characteristics, obvious Buick quality.

Twilight Sentinel® delay-headlamps-off feature can lend you comforting assistance from car to home.



16-inch aluminum wheels and special suspension are included with the optional Gran Touring Package.



STANDARD AND AVAILABLE EQUIPMENT*

(S) standard; (A) available	Park Avenue
Mechanical	
Battery – Delco Freedom II Plus	S
Brakes – anti-lock, power front disc/rear drum	S
Drive – front-wheel	S
Engine – 3800 Series II V6	S
Exhaust system – stainless steel	S
Fuel filler door release – electric, remote	S
Hood lock – inside release	S
Multifunction control lever – turn signal, headlamp high/low beam, windshield wiper/washer controls and cruise control	S
Security locks – rear-door, child	S
Steering – power rack-and-pinion	S
Suspension – automatic level control	S
Suspension – Automatic Ride Control	A
Suspension – front and rear independent, DynaRide®	A
Suspension – Gran Touring	S
Theft-deterrent system – PASS-Key® II	S
Traction control system	A
Transmission – electronically controlled 4-speed automatic with overdrive	S
Trip odometer	S
Wipers – 2-speed with low-speed delay feature	S
Interior	
Acoustical Package	S
Air bags – driver and right front-seat passenger Supplemental Restraint System (SRS)	S
Air conditioning – CFC-free	S
Air conditioning – dual automatic ComforTemp climate control	A
Air conditioning – rear-seat ComforTemp	A
Armrest – front-seat storage with dual cup holders	S
Armrest – rear-seat	S
Carpet savers – front and rear	S
Console – overhead (includes front-seat reading lights and garage door opener storage)	S
Cruise control – electronic	S
Defogger – electric, rear/window	S
Defogger – front and side window outlets	S
Door locks – automatic, power with lockout protection	S
Electronic warning tone – safety belts; ignition key; turn signal, headlamps, parking brake "on"	S
Head restraints – adjustable, front-seat	S
Instrumentation – backlit analog gauge cluster with trip odometer	S
Instrumentation – analog gauge cluster (includes tachometer; oil-life monitor; trip odometer; and warning indicators for coolant temperature, oil pressure, voltage, and low fuel and oil levels)	A
Lights – delayed exit lighting, interior	S
Lights – delayed illuminated entry, interior, and delayed exit	S
Lights – front- and rear-seat reading and warning	S
Lights – front- and rear-door courtesy and warning	S
Lights – front ashtray, trunk, engine compartment, glove box and instrument panel courtesy	S
Lights – theater dimming, interior	S
Mirrors, visor vanity – lighted, driver and passenger	S
Recliners – manual seatback, driver and passenger	S
Safety belts – front-seat lap/shoulder belt system with shoulder belt comfort adjuster	S
Safety belts – rear-seat lap/shoulder with child comfort guide	S
Seat – 6-way power, driver	S
Seats – 6-way power, driver and passenger	A
Seats – cloth 55/45 with front-seat storage armrest	S
Seats – leather/vinyl 55/45 with front-seat storage armrest	A
Steering column – Tilt-Wheel™ adjustable	S
Steering wheel – deluxe (with SRS**)	S
Steering wheel – leather-wrapped (with SRS**)	A
Sunshades – supplemental, extendable, front	A
Trunk lock release – electric, remote with security switch	S
Trunk trim – fall	S



Park Avenue Sedan

CONTINUED

(S) standard; (A) available	Park Avenue
Exterior	
Astrorooft – electric, sliding	A
Glass – Solar-Ray® solar-control	S
Headlamps – wraparound, composite tungsten-halogen	S
Mirrors, outside rearview – deluxe, body-color, electric, left and right remote	S
Moldings – wheel opening, belt reveal, body-side	S
Stripes – body-side	S
Tires – P205/70R15 steel-belted, radial-ply, all-season blackwall	S
Tires – P205/70R15 steel-belted, radial ply, all-season whitewall	A
Tires – P205/70R15 self-sealing whitewall	A
A) Wheels – specific, 15" aluminum	S
B) Wheelcovers – 15" custom, locking, wire	A
C) Wheels – 16" aluminum	A
Windows – power with driver's "express-down" and passenger lockout	S

AUDIO SYSTEMS

Antenna – automatic power	S
Radio – ETR® AM-FM stereo with seek/scan, cassette player, 4-speaker system, clock	S
Radio – ETR® AM-FM stereo with seek/scan, cassette player with auto reverse and search/repeat, automatic tone control, and clock; includes steering wheel radio controls	A
Radio – ETR® AM-FM stereo with seek/scan, compact disc player, automatic tone control, and clock; includes steering wheel radio controls	A
Radio – ETR® AM-FM stereo with cassette and compact disc players, automatic tone control, seek/scan, and clock; includes steering wheel radio controls	A

*Partial listing only – see your Buick dealer for complete lists and details. **Supplemental Restraint System.

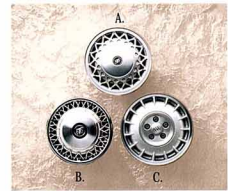
OPTION PACKAGE EQUIPMENT

(SD) Luxury Package; (SE) Prestige Package	SD	SE
Air conditioning – dual automatic ComforTemp climate control	■	■
Air conditioning – rear-seat ComforTemp	■	■
Armrest – rear-seat storage (included with leather seats)	■	■
Door edge guards – body-color	■	■
Door lock – memory, automatic, programmable; includes delayed locking and lockout protection	■	■
Headlamp control – Twilight Sentinel®	■	■
Horn – 4-note	■	■
Instrumentation – analog gauge cluster (includes tachometer; oil-life monitor; trip odometer; and warning lights for coolant temperature, oil pressure, voltage, and low fuel and oil levels)	■	■
Lamp monitors – front and rear	■	■
Lamps – cornering	■	■
Memory driver's seat and mirrors	■	■
Mirror, inside rearview – automatic dimming	■	■
Mirror, inside rearview – automatic dimming with compass	■	■
Mirrors, outside rearview – body-color, electric, left and right remote, left and right heated, left automatic day/night	■	■
Radio – ETR® AM-FM stereo with seek and scan, cassette player with auto reverse, search/repeat, automatic tone control, and clock; includes steering wheel radio controls	■	■
Recliner – electric seatback, driver	■	■
Recliner – electric seatback, passenger	■	■
Reminder Package – indicators for low washer fluid, low coolant level, door/trunk ajar	■	■
Remote keyless entry – programmable; includes retained accessory power, perimeter lighting, and security feedback	■	■
Retained accessory power – includes illuminated driver door lock and light control	■	■
Seat – 6-way power, passenger	■	■
Speakers – Concert Sound II	■	■
Theft-deterrent system – with starter interrupt and central unlocking	■	■
Tires – P205/70R15 steel-belted, radial-ply, all-season whitewall	■	■
Tires – P205/70R15 self-sealing whitewall	■	■
Trunk convenience net	■	■
Trunk mat	■	■
Trunk pull-down – electric	■	■

SPECIFICATIONS

Engine	
Type	3.8-litre 3800 SFI® Series II V6
Horsepower	205 @ 5200 rpm
Torque	230 @ 4000 rpm
Towing	
3800 Series II V6	3.06 final drive ratio
	1,000 maximum gross trailer rate (lbs) ⁽¹⁾⁽²⁾
	3,000 maximum gross trailer rate (lbs) ⁽¹⁾⁽²⁾⁽³⁾⁽⁴⁾

- (1) Sequential-pair fuel injection.
- (2) Included in required V92 Trailer Towing Package; requires Traction Control V95.
- (3) When properly equipped. Includes weight of trailer, cargo, passengers and equipment. All towing recommendations are subject to change. Check with your Buick dealer for the latest information. Trailer tongue load should be 10% of the maximum trailer weight, but should not exceed the load rating specified for that vehicle, engine or hitch combination.
- (4) Requires Class II frame-mounted trailer hitch.



Capacity	
Trunk, cu ft	20.3
Fuel tank, gal	18.0
Base curb weight, lbs	3,336

Dimensions (inches)	
Length	205.9
Width	74.1
Height	55.1
Wheelbase	110.8
Front tread	60.4
Rear tread	60.6

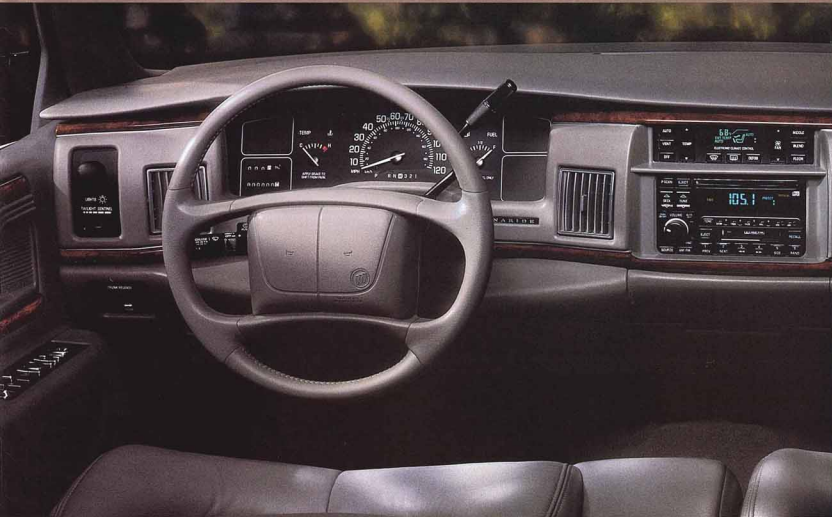
Interior (inches)	
Legroom	42.7/40.7
Headroom	38.9/37.9
Shoulder room	58.7/58.9
Hip room	55.1/54.2



40

R O A D M A S T E R

The way to measure a Roadmaster is simply to realize it is more Buick. Its 5.7-litre V8 engine makes it one of the most powerful American luxury cars on the road. Full of large-scale power, comfort and safety, Roadmaster is every inch an example of traditional luxury and value.



Available leather-surfaced driver and passenger heated seats neutralize chilly days.

R O A D M A S T E R



A full line of Delco stereos is available, including combination compact disc and cassette players.

Magnify Buick quality and you get the 1996 Roadmaster Collector's Edition—big on comfort, responsive power and safety engineering, with a remarkably generous list of amenities and conveniences. A feeling of safe passage is enhanced by full-frame construction, steel side door beams, dual air bags and anti-lock brakes. Other standard features include ETR® AM-FM stereo with seek and scan, cassette player and clock, and a 260-horsepower 5.7-litre SFI V8 synchronized to a smooth four-speed automatic transmission with overdrive.

The expansive interior includes analog instrumentation grouped for clarity and ease of vision.

The spacious, handsome interior is at once deeply comfortable and enjoyably secure.

Available remote keyless entry system locks, unlocks doors, turns on interior lights, opens trunk.

Buick's largest trunk allows you 21 cu ft of space and convenient loading height.





Available leather-surfaced driver and passenger heated seats neutralize chilly days.



A full line of Delco stereos is available, including combination compact disc and cassette players.

Magnify Buick quality and you get the 1996 Roadmaster Collector's Edition—big on comfort, responsive power and safety engineering, with a remarkably generous list of amenities and conveniences. A feeling of safe passage is enhanced by full-frame construction, steel side door beams, dual air bags and anti-lock brakes. Other standard features include ETR® AM-FM stereo with seek and scan, cassette player and clock, and a 260-horsepower 5.7-litre SFI V8 synchronized to a smooth four-speed automatic transmission with overdrive.

The expansive interior includes analog instrumentation grouped for clarity and ease of vision.

The spacious, handsome interior is at once deeply comfortable and enjoyably secure.



Available remote keyless entry system locks, unlocks doors, turns on interior lights, opens trunk.

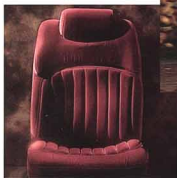


Buick's largest trunk allows you 21 cu ft of space and convenient loading height.

Roadmaster Sedan's DynaRide® suspension smooths the road with comfort and precision.



The Comfort Team—designed orthopedically sensitive seats provide maximum comfort for long trips.



Large helpings of comfort are lavished upon Roadmaster's passengers. The legendary smoothness and silence of this rear-wheel-drive classic sedan are due to front independent DynaRide® suspension, solid steel body construction, and a rigid full-perimeter frame that helps ensure integrity of structure. Other comforts are evident in a list of standard features as substantial as the car itself. These include anti-lock brakes, power windows, air conditioning, Tilt-Wheel™ adjustable steering column, generously comfortable seating that is inviting and easy to slip into and a premium-quality music system.

Powerful-appearing and imposing, the 1996 Roadmaster Sedan is shown in Ruby Red with 15-inch wheelcovers.



Available rearview mirror has automatic day/night, dimming and integrated front-seat reading lights.



The 260-hp 5.7-litre V8 is another powerful reason one feels such confidence in a Roadmaster.





*The comfort of a
Buick. The versatility
of a wagon. Roadmaster
Estate Wagon seats
eight adults.*

When using the rear seat, the tailgate opens like a car door for easy entry and exit.



Roadmaster's tailgate opens down for easier loading of wide objects.



A solid measure of Buick excellence, the 1996 Roadmaster Estate Wagon might just be the most luxurious wagon in the world. Quality pulls a lot of weight—up to 5,000 lbs when properly equipped—and the cavernous interior is full of standard features like rear-door child security locks, power windows with driver-side “express down,” passenger lockout function, full carpeting, power steering, an ETR® AM-FM stereo radio with seek and scan, cassette player, and extended-range front and rear speakers. Eight adult passengers,

Ideal for recreational towing, Roadmaster will pull a 5,000-lb load, when properly equipped.

measuring this classic for comfort and luxury, would surely give it a unanimous “ten.”

Rear and middle seats fold flush with the floor for maximum cargo area.



Convenient front-seat armrest offers storage for small items, and dual cup holders.



STANDARD AND AVAILABLE EQUIPMENT*

(S) standard; (A) available	Sedan	Estate Wagon	Limited Sedan
Mechanical			
Battery - heavy-duty	S	S	S
Brakes - anti-lock, power front disc/rear drum	S	S	S
Cruise control - electronic	S	S	S
Engine - 5.7-litre SFI V8	S	S	S
Exhaust system - stainless steel, dual exhaust	S	S	S
Heating and cooling - heavy-duty transmission	A	A	A
Remote keyless entry (includes illuminated entry)	A	A	S
Security locks - rear-door, child	S	S	S
Steering - variable-effort with steering dampener	—	S	S
Suspension - Dynafide®	S	—	S
Suspension - heavy-duty	—	S	—
Suspension - automatic level control	A	A	A
Suspension - limited-slip differential	A	A	A
Tailgate - 2-way, manual	—	A	—
Theft-deterrent system - PASS-Key® II with starter interrupt	S	S	S
Transmission - electronically controlled	—	S	—
4-speed automatic with overdrive	S	S	S
Wipers - 2-speed with low-speed delay	S	S	S
Wipers - rear-window with washer	—	S	—
Interior			
Air bags - driver and right front-seat passenger	—	S	—
Supplemental Restraint System (SRS)	S	S	S
Air conditioning - CFC-free	S	S	S
Air conditioning - electronic touch climate control	S	S	S
Armrest - front-seat storage with dual cup holders	S	A	S
Carpet savers - front and rear (snap-down front)	S	A	S
Defogger - electric, rear-window	S	S	S
Defogger - front and side window outlets	S	S	S
Door locks - memory, automatic, programmable	A	A	S
Door locks - power	S	S	—
Head restraints - 6-way, front	—	—	S
Head ornament - Collector's Edition	S	S	S
Instrumentation - analog gauge cluster includes speedometer, odometer, trip odometer and temperature and fuel gauges	S	S	S
Lights - front-seat reading (integral with rearview mirror)	S	S	S
Lights - door courtesy and warning	S	S	S
Lights - front- and rear-door-operated dome, front ashtray, glove box, engine compartment, instrument panel and load compartment	S	S	S
Mirror, inside rearview - automatic dimming with integral reading lights	A	A	S
Mirror, inside rearview - day/night with integral reading lights	S	S	—
Mirrors, visor vanity - cloth-covered, driver and passenger	S	S	—
Mirrors, visor vanity - lighted, driver and passenger	A	A	S
Recliners - electric seatback, driver and passenger	—	—	S
Recliners - manual seatback, driver and passenger	S	S	—
Safety belts - front-seat lap/shoulder belt system, cinching	S	S	S
Safety belts - rear-seat lap/shoulder belts, cinching	S	S	S
Seat - third, rear-facing, vinyl	—	S	—
Seats - 6-way power, driver and passenger	A	A	S
Seats - cloth 55/45 with armrest	—	S	—
Seats - cloth 55/45 with storage armrest	S	A	—
Seats - cloth, up-level, split-frame design with front and rear storage armrests	—	—	S
Seats - leather/vinyl 55/45 with front-seat storage armrest	A	A	A
Security cover - rear storage area	—	S	—
Steering column - Tilt-Wheel™ adjustable	S	S	S
Storage compartments - front- and rear-door, lower, built-in	—	S	S
Storage compartments - lockable, concealed	—	S	—
Storage pockets - front seatbacks	S	S	S
Storage tray - instrument panel pull-out	S	S	S
Tire - full-size spare	A	A	A



Roadmaster Sedan



Roadmaster Limited Sedan



Roadmaster Estate Wagon

CONTINUED

(S) standard; (A) available	Sedan	Estate Wagon	Limited Sedan
Trunk convenience net - single-function	S	S	S
Trunk release - electric, remote	S	—	S
Vista roof - with tinted glass	—	S	—
Vista shade	—	S	—
Exterior			
Glass - Solar-Ray® solar-control windshield	A	S	A
Luggage rack - integral with Vista roof	—	S	—
Mirrors, outside rearview - detache, body-color, folding, left remote and right manual	S	S	—
Mirrors, outside rearview - electric, folding, heated left, left and right remote	A	A	S
Tires - P225/58R15 steel-belted, radial-ply, all-season whitewall	—	S	—
Tires - P235/70R15 steel-belted, radial-ply, all-season whitewall	S	—	S
Top - Landau vinyl	A	—	A
A) Wheelcovers - 15" deluxe	S	—	S
B) Wheels - 15" aluminum	A	S	A
C) Wheelcovers - 15" custom, locking, wire	A	A	A
Windows - power with driver's "express-down" and passenger lockout feature	S	S	S
Woodgrain vinyl applique - Light Colonial Oak	—	S	—

AUDIO SYSTEMS

	Sedan	Estate Wagon	Limited Sedan
Antenna - automatic power	A	A	S
Radio - ETR® AM-FM stereo with seek and scan, cassette player, and clock	S	S	S
Radio - ETR® AM-FM stereo with seek and scan, cassette player with auto reverse, automatic tone control, and clock	A	A	A
Radio - ETR® AM-FM stereo with seek and scan, combination cassette and compact disc players, automatic tone control, and clock	A	A	A
Speakers - Concert Sound II (4)	S	S	S

*Partial listing only - see your Buick dealer for complete lists and details.

OPTION PACKAGE EQUIPMENT

(SD) Luxury Package; (SE) Prestige Package; (ZZ) Limited Estate Wagon	Sedan	Estate Wagon	Limited Sedan
	SD	SE	ZZ
Antenna - automatic power	■	■	■
Armrest - front-seat storage	■	■	■
Carpet savers - front and rear	■	■	■
Door locks - automatic, programmable, memory, power	■	■	■
Headlamp control - Twilight Sentinel®	■	■	■
Lamps - cornering	■	■	■
Memory power driver's seat, heated on driver and passenger sides	■	■	■
Mirror, inside rearview - automatic dimming with integral reading lights	■	■	■
Mirrors, visor vanity - lighted, driver and passenger	■	■	■
Mirrors, outside rearview - electric, folding, heated left, left and right remote	■	■	■
Radio - ETR® AM-FM stereo with seek and scan, cassette player with auto reverse, automatic tone control, and clock	■	■	■
Remote keyless entry	■	■	■
Seat - 6-way power, driver	■	■	■
Seat - 6-way power, passenger	■	■	■
Steering wheel - leather-wrapped	■	■	■
Tires - P225/70R15 steel-belted, radial-ply, all-season, self-sealing whitewall	■	■	■
Trunk pull-down - electric	■	■	■

SPECIFICATIONS

Engine	
Type	5.7-litre SFI™ V8
Horsepower	260 @ 5000 rpm
Torque	330 @ 2400 rpm

Towing	
5.7-litre V8	2.93 final drive ratio ⁽¹⁾
	5,000 maximum gross trailer rate (lbs) ⁽²⁾⁽³⁾

- (1) Sequential-port fuel injection.
- (2) Included in required V92 Trailer Towing Package and requires Traction Control V93.
- (3) When properly equipped. Includes weight of trailer, cargo, passengers and equipment. All towing recommendations are subject to change. Check with your Buick dealer for the latest information. Trailer tongue load should be 10% of the maximum trailer weight but should not exceed the load rating specified for that vehicle, engine or lock combination.
- (4) Requires Class II frame-mounted trailer hitch.



Capacity	Sedan	Wagon
Trunk, cu ft	21.0	—
Max. cargo, cu ft	—	92.4
Fuel tank, gal	23.0	21.0
Base curb weight, lbs	4,138	4,486

Dimensions (inches)		
Length	215.8	217.5
Width	78.1	79.9
Height	55.9	60.3
Wheelbase	115.9	115.9
Front tread	61.7	62.1
Rear tread	60.7	64.1

Interior (inches)	front/rear	front/rear
Legroom	42.1/38.9	42.3/37.3
Headroom	39.2/38.6	39.6/39.4
Shoulder room	63.3/63.3	63.4/63.5
Hip room	56.9/56.9	56.9/57.1



L E S A B R E

You've read of its accomplishments and awards. Its reputation for quality precedes it—and more American families prefer the LeSabre full-size sedan over any other.* A few of the reasons: safety, value, purposeful luxury, full-size room and comfort, and the power of a 3800 Series II V6.

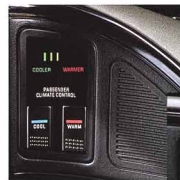
*Based on 1995-1996 model year data.



Pleasing America, six at a time, the 1996 LeSabre needs a trophy case in which to display all its awards. Addressing your needs, however, is what LeSabre is all about. The spacious six-passenger cabin is so quiet and smooth at highway speeds, all six occupants can easily enjoy the premium sound system. Comfortable, contoured seating joins with the smooth DynaRide® suspension and easily accessed wraparound instrument panel to put the driver at ease and inspire a secure feeling in passengers. A spin around the block is enough

LeSabre Limited's wraparound range of comforts, information and controls makes driving a real pleasure.

L E S A B R E



Driver and front passenger can vary temperatures with LeSabre Limited's dual automatic ComfortTemp climate control.



An available CD player with Concert Sound II speakers rivals home systems for richness of sound.

to show why LeSabre is an American favorite.



Available remote keyless entry system provides you a number of Personal Choice options, plus locking/unlocking car at a distance.

Available six-way power seats and mirrors are conveniently and easily operated.



L E S A B R E



Driver and front passenger can vary temperatures with LeSabre Limited's dual automatic ComforTemp climate control.



An available CD player with Concert Sound II speakers rivals home systems for richness of sound.

Pleasing America, six at a time, the 1996 LeSabre needs a trophy case in which to display all its awards. Addressing your needs, however, is what LeSabre is all about. The spacious six-passenger cabin is so quiet and smooth at highway speeds, all six occupants can easily enjoy the premium sound system. Comfortable, contoured seating joins with the smooth DynaRide® suspension and easily accessed wraparound instrument panel to put the driver at ease and inspire a secure feeling in passengers. A spin around the block is enough

LeSabre Limited's wraparound range of comforts, information and controls makes driving a real pleasure.

to show why LeSabre is an American favorite.



Available remote keyless entry system provides you a number of Personal Choice options, plus locking/unlocking car at a distance.

Available six-way power seats and mirrors are conveniently and easily operated.



L E S A B R E

3800 Series II V6
delivers 205 horsepower
at 5200 rpm, 230 ft.-lbs.
torque at 4000 rpm.



Optional traction
control helps prevent
loss of traction on
slippery surfaces.



America enjoys a powerful best seller and LeSabre is tops with U.S. families. One reason is its muscular 3800 Series II V6 with sequential-port fuel injection, new for 1996. It provides effortless cruising for a family of six. The optional Gran Touring Package features automatic level control to help keep the vehicle level under heavy loads. LeSabre has a considerable array of safety features like dual air bags, anti-lock brakes, steel safety cage body unit, and options which include Personal Choice features, like a pushbutton instant alarm

LeSabre Limited Sedan
shown with optional
Gran Touring Package
includes 16-inch wheels,
special suspension
calibration and more.

programmed into the key fob. LeSabre—the best seller America really gets into.

Available Twilight
Sentinel™ delay-
headlamps-off feature
lends comforting
assistance from
car to home.



Integrated rear window
antenna eliminates
an upright aerial,
presenting a smoother
aerodynamic surface.



L E S A B R E

Rear-door child security locks—one more item that endears LeSabre to America's families.



LeSabre's rear-seatbelt child comfort guide adjusts so smaller passengers can be comfortable, too.



Why America is so comfortable with LeSabre is a subject that covers a lot of ground. Cross-country trips are made enjoyable by legendary DynaRide® suspension, and the full-size favorite is full of a long list of safety, convenience and comfort features, easily accommodating six adults. Wind tunnel testing assures acoustic calm in a sealed cabin at highway speeds, as LeSabre's contemporary form slips through the atmosphere. The electronically controlled automatic transmission with overdrive glides LeSabre through the gears in a seamless arc, further emphasizing the comfort that appeals to America's families.

Full-size room and comfort and the legendary ride of DynaRide® suspension—no wonder LeSabre is such a favorite.

Rear-seat ComfortTemp allows directionally controlled rear air current. (Standard on Limited, optional on Custom.)



The front-seat storage armrest features dual cup holders.



STANDARD AND AVAILABLE EQUIPMENT*

(S) standard, (A) available	Custom	Limited
Mechanical		
Battery – Delco Freedom II Plus	S	S
Brakes – anti-lock, power front disc/rear drum	S	S
Drive – front-wheel	S	S
Engine – 3800 SFI Series II V6	S	S
Exhaust system – stainless steel	S	S
Hood lock – inside release	S	S
Multi-function control lever – turn signal, headlamp high/low beam, windshield wiper/washer controls	S	S
Remote keyless entry – includes instant alarm, perimeter lighting, security feedback, and individually programmable transmitters	A	S
Security locks – rear-door, child	S	S
Steering – power rack-and-pinion	S	S
Suspension – DynaRide®	S	S
Suspension – front, independent MacPherson strut	S	S
Suspension – rear, independent	S	S
Suspension – Gran Touring (includes automatic level control)	A	A
Theft-deterrent system – PASS-Key® II	S	S
Traction control system	A	A
Transmission – electronically controlled 4-speed automatic with overdrive	S	S
Trip odometer	S	S
Wipers – 2-speed with low-speed delay feature	S	S
Interior		
Air bags – driver and right front-seat passenger	S	S
Supplemental Restraint System (SRS)	S	S
Air conditioning – CFC-free	S	S
Air conditioning – dual automatic ComfortTemp climate control	—	S
Air conditioning – rear-seat ComfortTemp	—	S
Armrest – front-seat storage with dual cup holders	S	S
Carpet savers – front and rear	A	S
Defogger – electric, rear window	S	S
Defogger – front and side window outlets	S	S
Door locks – power with lockout protection and delayed locking	S	S
Electronic warning tone – safety belts; ignition key; turn signal, headlamps, parking brake "on"	S	S
Head restraints – adjustable, front-seat	S	S
Instrumentation – backlit analog cluster with trip odometer	S	—
Instrumentation – quartz analog gauge cluster (includes tachometer; voltage, temperature and oil pressure gauges; low-fuel indicator, and oil level and oil life monitors)	A	S
Lights – ashtray, front- and rear-door-operated dome, trunk, engine compartment, glove box and instrument panel courtesy	S	—
Lights – front- and rear-door-operated, front-header courtesy and reading, instrument panel courtesy, rear roof rail courtesy/reading, delayed exit lighting, delayed entry lighting and theater dimming	—	S
Recliners – manual seatback, driver and passenger	S	S
Safety belts – front-seat lap/shoulder belt system with front shoulder belt comfort adjuster	S	S
Safety belts – rear-seat lap/shoulder with child comfort guide	S	S
Seat – 6-way power, driver	A	S
Seats – cloth 55/45 with front-seat storage armrest, dual cup holders	S	S
Seats – leather/Vinyl 55/45 with front-seat storage armrest	A	A
Steering column – Tilt-Wheel™ adjustable	S	S
Steering wheel – deluxe (with SRS**)	S	S
Sunshades – extendable, supplemental, front	S	S
Trunk convenience net	A	S
Trunk lock release – electric, remote	A	S
Trunk trim – full	S	S
Exterior		
Bumper guards – front	S	S
Glass – Solar-Ray® solar-control windshield	S	S
Headlamps – wraparound, composite tungsten-halogen	S	S
Mirrors, outside rearview – deluxe, body-color, left remote, right manual	S	—



LeSabre Custom Sedan



LeSabre Limited Sedan

CONTINUED

(S) standard, (A) available	Custom	Limited
Mirrors, outside rearview – deluxe, body-color, electric, left and right remote	A	S
Moldings – black, body-side	S	—
Moldings – lower body-side and rocker panel	—	S
Moldings – wheel opening, belt reveal and roof drip	S	S
Paint – waterborne basecoat/clearcoat with anti-chip lower protection	S	S
Stripes – accent	A	S
Tires – P205/70R15 steel-belted, radial-ply, all-season blackwall	S	A
Tires – P205/70R15 steel-belted, radial-ply, all-season whitewall	A	S
Tires – P215/60R16 Eagle GA blackwall	A	A
A) Wheelcovers – 15" deluxe	S	—
B) Wheels – 15" aluminum	A	S
C) Wheelcovers – 15" custom, locking, wire	A	A
D) Wheels – 16" aluminum	A	A
Windows – power with driver's "express-down" and passenger lockout feature	S	S

AUDIO SYSTEMS

	Custom	Limited
Antenna – rear window	S	S
Radio – ETR® AM-FM stereo with seek and scan, and clock	S	—
Radio – ETR® AM-FM stereo with seek and scan, cassette player with auto reverse, and clock	A	S
Radio – ETR® AM-FM stereo with seek and scan, cassette player with auto reverse and search/repeat, automatic tone control, and clock; includes steering wheel radio controls	A	A
Radio – ETR® AM-FM stereo with compact disc player, automatic tone control, seek and scan, and clock; includes steering wheel radio controls	A	A
Radio – ETR® AM-FM stereo with seek and scan, cassette and compact disc players, automatic tone control and clock; includes steering wheel radio controls	A	A
Speakers – Concert Sound II	A	S
Speakers – dual, front and rear extended-range	S	—

*Partial listing only – see your Buick dealer for complete lists and details.
**Supplemental Restraint System.

OPTION PACKAGE EQUIPMENT

(SD) Luxury Package; (SE) Prestige Package	Custom SD	SE	Limited SE
Carpet savers – front and rear	■	■	■
Cruise control – electronic	■	■	■
Door edge guards – body-color	■	■	■
Instrumentation – analog gauge cluster includes tachometer; voltage, temperature and oil pressure gauges; low-fuel indicator; and oil level and oil life monitors	■	■	■
Lamps – cornering	■	■	■
Lighting package, headliner – includes map lights on inside rearview mirror, and driver and passenger lighted visor vanity mirrors	■	■	■
Memory door locks – automatic, programmable with lockout protection and delayed locking	■	■	■
Mirror, visor vanity – lighted, driver	■	■	■
Mirrors, outside rearview – left, automatic dimming	■	■	■
Radio – ETR® AM-FM stereo with cassette player	■	■	■
Radio – ETR® AM-FM stereo with seek and scan, cassette player with auto reverse and search/repeat, automatic tone control, and clock; includes steering wheel radio controls	■	■	■
Remote keyless entry – includes instant alarm, perimeter lighting, security feedback and individually programmable transmitters	■	■	■
Speakers – Concert Sound II	■	■	■
Stripes – accent	■	■	■
Suspension – automatic level control	■	■	■
Theft-deterrent system – with alarm and starter interrupt; includes central unlocking	■	■	■
Tires – P205/70R15 steel-belted, radial-ply, all-season whitewall	■	■	■
Trunk convenience net	■	■	■
Trunk lock release – electric, remote	■	■	■
Wheels – 15" aluminum	■	■	■

SPECIFICATIONS

Engine	
Type	3.8-litre 3800 SFI™ Series II V6
Horsepower	205 @ 5200 rpm
Torque	230 @ 4000 rpm
Towing	
3800 Series II V6	2.84 final drive ratio
	1,000 maximum gross trailer rate (lbs) ⁽¹⁾
	3.06 final drive ratio
	3,000 maximum gross trailer rate (lbs) ⁽¹⁾

(1) Sequential-port fuel injection.
(2) When properly equipped. Includes weight of trailer, cargo, passengers and equipment. All towing recommendations are subject to change. Check with your Buick dealer for the latest information. Trailer tongue load should be 10% of the maximum trailer weight but should not exceed the load rating specified for that vehicle, engine or hitch combination.
(3) Requires Class II frame-mounted trailer hitch.



Capacity	
Trunk, cu ft	17.1
Fuel tank, gal	18.0
Base curb weight, lbs	3,430

Dimensions (inches)	
Length	200.0
Width	74.9
Height	55.7
Wheelbase	110.8
Front tread	60.4
Rear tread	60.4

Interior (inches)	
Legroom	front/rear 42.5/40.4
Headroom	38.8/37.8
Shoulder room	59.1/58.9
Hip room	54.8/54.4



66

R E G A L

The 1996 Regal is a fun, responsive sports sedan, with powerful V6 performance—and it looks like it. Its sleek silhouette is matched inside by luxurious comfort and an impressive list of features.

Regal is truly an ideal alliance of family practicality, comfort and performance.



A world-class joy to drive, the 1996 Regal Gran Sport Sedan is more comfortable than ever since Buick's advanced Seat Comfort Team sat in on its design. Over 100,000 real-world driving miles helped shape its body-sensitive seats—and helped redefine luxurious comfort for sports sedan enthusiasts. The new 3800 Series II V6 engine is available on all Regals and delivers 205 horsepower synchronized to an electronically controlled automatic transmission for silent, effortless movement. Features like available Gran Touring suspension make

The instrument panel is a showplace of easily reached switches and legible gauges.

this Regal the premier alternative to any mid-size automobile in its class.

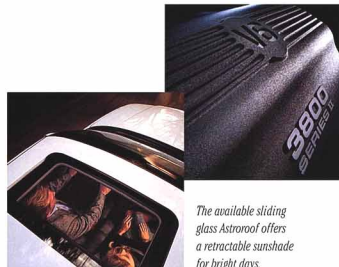
R E G A L



Optional Delco ETR® AM-FM stereo radio with CD player, graphic equalizer and premium speakers.



Available remote keyless entry system locks, unlocks doors, turns on interior lights, unlatches trunk, all from a distance.



The muscular 3800 Series II V6 is available on all Regals, standard on Gran Sport and Limited Sedans.

The available sliding glass Astroroof offers a retractable sunshade for bright days.



R E G A L



Optional Delco ETRSM AM-FM stereo radio with CD player, graphic equalizer and premium speakers.

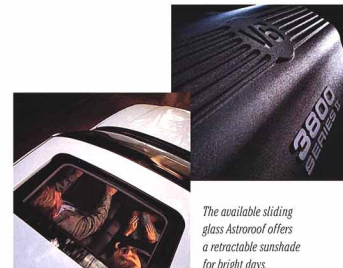


Available remote keyless entry system locks, unlocks doors, turns on interior lights, unlatches trunk, all from a distance.

A world-class joy to drive, the 1996 Regal Gran Sport Sedan is more comfortable than ever since Buick's advanced Seat Comfort Team sat in on its design. Over 100,000 real-world driving miles helped shape its body-sensitive seats—and helped redefine luxurious comfort for sports sedan enthusiasts. The new 3800 Series II V6 engine is available on all Regals and delivers 205 horsepower synchronized to an electronically controlled automatic transmission for silent, effortless movement. Features like available Gran Touring suspension make

The instrument panel is a showplace of easily reached switches and legible gauges.

this Regal the premier alternative to any mid-size automobile in its class.



The available sliding glass Astroval offers a retractable sunshade for bright days.



The muscular 3800 Series II V6 is available on all Regals, standard on Gran Sport and Limited Sedans.



72



*Regal Limited Sedan
features a distinctive
trim level and 3800
Series II V6 performance.*

*Regal Custom Sedan
is available with
stylish 15-inch
aluminum wheels.*

R E G A L

PASS-Key® II theft-deterrent system allows only your key to start your Regal.



Passenger controls are conveniently located on the armrest. Dual ComfortTemp climate control varies temperature for driver and front-seat passenger.



74

Comfortable control of power is a benchmark quality of the 1996 Regal—indeed, it may be the most comfortable sports sedan ever built. The very advanced seating provides long-distance relaxation and support, and a rich array of significant standard features underscores the pleasures of powerful V6 performance. Safety is a comfort also, and Regal is fully committed to it with features such as anti-lock brakes and dual air bags. A six-way power driver seat with recliner is available on all Regal Coupes and Sedans, and silky smooth DynaRide® suspension offers a luxurious ride coupled with crisp handling.

Standard S54S three-person split bench front seat shown in rich cloth upholstery.

Optional steering wheel radio controls continue the ergonomic ease that the wraparound instrument panel provides.



The power express-down driver window lowers fully with one touch of the button.





Regal Custom Coupe sports body-color side moldings with bright insert.



The firm, precise handling of Regal Gran Sport Coupe comes standard with Gran Touring suspension.

STANDARD AND AVAILABLE EQUIPMENT*

(S) standard; (A) available

	Custom Coupe/Sedan	Limited Sedan	Gran Sport Coupe/Sedan
Mechanical			
Brakes — anti-lock, power 4-wheel disc	S	S	S
California emission equipment and testing	A	A	A
Cruise control — electronic	S	S	S
Drive — front-wheel	S	S	S
Engine — 3100 SFI V6	S	S	—
Engine — 3800 SFI Series II V6	A	A	A
Engine block heater	A	A	A
Exhaust system — dual outlets	A	A	A
Exhaust system — stainless steel	S	S	S
Hood lock — inside, floor-mounted release	S	S	S
Remote keyless entry	A	A	A
Steering — power	S	S	S
Steering — variable effort	A	A	S
Suspension — DynaRide®	S	S	—
Suspension — Gran Touring (requires 3800 V6 engine)	—	A	S
Theft-deterrent system — PASS-Key® II	S	S	S
Transmission — electronically controlled	S	S	S
4-speed automatic with overdrive	S	S	S
Wipers — 2-speed with low-speed delay feature	S	S	S
Interior			
Air bags — driver and right front-seat passenger	S	S	S
Supplemental Restraint System (SRS)	S	S	S
Air conditioning — dual Comfort climate control	S	S	S
Armrest — front-seat storage with dual cup holders	S	S	—
Carpet savers — front and rear	A	A	A
Defogger — front and side window outlets	S	S	S
Defogger — rear-window, electric	S	S	S
Door locks — automatic power	S	S	S
Electronic warning tones — safety belts; ignition key; headlamps, turn signal "on"	S	S	S
Head restraints — adjustable, front-seat	S	S	S
Heat ducts — rear-seat	S	S	S
Instrumentation — analog gauge cluster with tachometer, trip odometer, temperature and fuel gauges, and indicators for low voltage and oil pressure	S	S	S
Lamp — center, high-mounted stop	S	S	S
Lights — overhead console courtesy with integral reading lights	A	A	S
Lights — integral dome and reading (Sedan)	—	A	S
Lights — sail panel reading (Coupe)	A	—	—
Map pocket — front seatback	—	S	A
Mirrors, visor vanity — lighted, driver and passenger	A	A	A
Mirrors, visor vanity — dual, covered, nonlighted, driver and passenger	S	S	S
Safety belts — front- and rear-seat manual lap/shoulder with front-seat comfort adjuster and rear-seat child comfort guide	S	S	S
Seat — 6-way power, driver	A	A	A
Seats — cloth bucket with console	A	A	A
Seats — reclining, cloth 55/45 with storage armrest	S	S	—
Seats — leather/vinyl 55/45 split bench	—	A	A
Seats — leather/vinyl bucket	A	A	A
Steering column — Tilt-Wheel™ adjustable	S	S	S
Steering wheel — leather-wrapped (with SRS**)	—	A	S
Sunshades — slide-out extensions	S	S	S
Trunk convenience net	A	A	A
Trunk lock release — electric, remote	S	S	S
Exterior			
Astrorof — electric sliding and tilting with sunshade	A	A	A
Glass — Solar-Ray® solar control, windshield	S	S	S
Headlamps — composite tungsten-halogen	S	S	S
Luggage rack — decklid: black (Coupe); chrome (Sedan)	A	A	A



Regal Custom Sedan



Regal Custom Coupe



Regal Limited Sedan



Regal Gran Sport Sedan



Regal Gran Sport Coupe

CONTINUED

(S) standard; (A) available

	Custom Coupe/Sedan	Limited Sedan	Gran Sport Coupe/Sedan
Mirrors, outside rearview — deluxe (black on Coupe, body color on Sedan), electric, left and right remote with backlit controls	S	S	S
Paint — two-tone Argent (gray) lower accent	—	—	S
Reflectors — lower door (Sedan)	—	S	—
Tires — P205/70R15 steel-belted, radial-ply all-season blackwall	S	S	—
Tires — P225/60R16 steel-belted, radial-ply, Eagle GA touring blackwall	—	A	A
Trunk trim	S	S	S
A) Wheelcovers — 15" deluxe, bolt-on	S	S	—
B) Wheels — 15" aluminum	A	A	—
C) Wheels — 16" aluminum	—	A	A
D) Wheels — 16" aluminum	—	—	A
E) Wheels — 16" chrome aluminum	—	—	A
Windows — power with driver's "express-down" and passenger lockout feature	S	S	S

AUDIO SYSTEMS

	Custom Coupe/Sedan	Limited Sedan	Gran Sport Coupe/Sedan
Antenna — automatic power	A	A	A
Antenna — fixed-mast	S	S	—
Radio — ETR® AM-FM stereo with seek and scan, cassette player, and clock	S	S	S
Radio — ETR® AM-FM stereo with seek and scan, cassette player with auto reverse, automatic tone control, and clock	A	A	A
Radio — ETR® AM-FM stereo with seek and scan, compact disc player, automatic tone control, and clock	A	A	A
Radio — ETR® AM-FM stereo with seek and scan, combination cassette and compact disc players, automatic tone control, and clock	A	A	A
Speakers — dual, front and rear extended-range	S	S	—
Speakers — Concert Sound II	A	A	S
Steering wheel — with radio controls	A	A	A

*Partial listing only — see your Buick dealer for complete lists and details.
**Supplemental Restraint System

OPTION PACKAGE EQUIPMENT

	Custom Coupe/Sedan	Limited Sedan	Gran Sport Coupe/Sedan
(SD) Luxury Package; (SE) Prestige Package; (SK) Gran Sport Coupe Package	SD	SE	SK
Antenna — automatic power	■	■	■
Carpet savers — front and rear	■	■	■
Engine — 3.8-litre 3800 SFI Series II V6	■	■	■
Lights — dome with integral reading lights (Sedan only)	■	■	■
Lights — front overhead console courtesy and reading (Sedan only)	■	■	■
Lights — sail panel courtesy (Coupe only)	■	■	■
Mirrors, visor vanity — lighted, driver and passenger	■	■	■
Radio — ETR® AM-FM stereo with seek/scan, cassette player with auto reverse and search/repeat, automatic tone control, and clock	■	■	■
Radio controls — steering wheel	■	■	■
Remote keyless entry	■	■	■
Seat — 6-way power, driver	■	■	■
Seats — cloth bucket with console	■	■	■
Speaker system — Concert Sound II	■	■	■
Suspension — Gran Touring (requires 3800 Series II V6 engine)	■	■	■
Tires — P225/60R16 steel-belted, radial-ply, Eagle GA touring blackwall	■	■	■
Trunk convenience net	■	■	■
Wheels — 16" aluminum	■	■	■

SPECIFICATIONS

Engine	
Type (Custom)	3.1-litre 3100 SFI™ V6
Horsepower	160 @ 5200 rpm
Torque	185 @ 4000 rpm
Type (all)	3.8-litre 3800 SFI™ Series II V6
Horsepower	205 @ 5200 rpm
Torque	230 @ 4000 rpm
Towing	
3100 V6	3.33 final drive ratio 1,000 maximum gross trailer rate (lbs) ⁽¹⁾⁽²⁾
3800 Series II V6	3.06 final drive ratio 2,000 maximum gross trailer rate (lbs) ⁽¹⁾⁽²⁾

(1) Sequential-port fuel injection.
(2) Requires Class II frame-mounted trailer hitch, included in required V6 Trailer Towing package.
(3) When properly equipped. Includes weight of trailer, cargo, passengers and equipment. All towing recommendations are subject to change. Check with your Buick dealer for the latest information. Trailer tongue load should be 10% of the maximum trailer weight but should not exceed the load rating specified for that vehicle, engine or hitch combination.



Capacity	Coupe	Sedan
Trunk, cu ft	15.6	15.9
Fuel tank, gal	17.1	17.1
Base curb weight, lbs	3,256	3,355

Dimensions (inches)		
Length	193.9	193.7
Width	72.5	72.5
Height	53.3	54.5
Wheelbase	107.5	107.5
Front tread	59.5	59.5
Rear tread	58.0	58.0

Interior (inches)	front/rear	front/rear
Legroom	42.3/34.8	42.4/36.2
Headroom	37.8/37.0	38.6/38.3
Shoulder room	57.6/56.8	57.8/56.6
Hip room	52.0/53.1	52.7/55.0



80

C E N T U R Y

It keeps winning awards and scoring high in tests on quality and durability. It is a superior value, yet many of its admirers are initially attracted to its elegance and beauty. With a choice of sophisticated engines, and many standard features, Century is bound to please you.



C E N T U R Y



Convenient front-seat armrest offers storage for small items, and dual cup holders.



Available remote keyless entry system locks, unlocks car, turns on interior lights, unlatches trunk from up to 30 ft. away.

Feeling good is a standard feature in a luxurious value like the 1996 Century. And there are many others: the strong unitized body structure with features like Tilt-Wheel™ adjustable steering column, power rack-and-pinion steering, anti-lock brakes for enhanced control on most slippery surfaces, air conditioning, delay wipers and the available 3100 V6 engine. Buick's advanced Comfort Team-designed seating makes any trip more inviting for all occupants. Four-door, six-passenger room, beautifully appointed, rides in hushed

The roomy cabin features richly tailored upholstery and ergonomic appointments that add comfort to the miles. comfort on Buick's DynaRide® suspension. Slip into Century—it's a good feeling.



Available six-way power driver's seat has fingertip controls on the front of the seat.



Century Sedan's DynaRide® suspension smooths the road with precision and comfort.



C E N T U R Y



Convenient front-seat armrest offers storage for small items, and dual cup holders.



Available remote keyless entry system locks, unlocks car, turns on interior lights, unlatches trunk from up to 30 ft. away.

Feeling good is a standard feature in a luxurious value like the 1996 Century. And there are many others: the strong unitized body structure with features like Tilt-Wheel™ adjustable steering column, power rack-and-pinion steering, anti-lock brakes for enhanced control on most slippery surfaces, air conditioning, delay wipers and the available 3100 V6 engine. Buick's advanced Comfort Team-designed seating makes any trip more inviting for all occupants. Four-door, six-passenger room, beautifully appointed, rides in hushed

The roomy cabin features richly tailored upholstery and ergonomic appointments that add comfort to the miles.

comfort on Buick's DynaRide® suspension. Slip into Century—it's a good feeling.



Available six-way power driver's seat has fingertip controls on the front of the seat.



Century Sedan's DynaRide® suspension smooths the road with precision and comfort.

Special Sedan, with its 2.2-litre fuel-injected engine, is the most affordable Century.



Available Wagon cargo security cover conceals valuables for worry-free shopping and traveling.



Extensions of your wishes, both the stylish Century Special Sedan and Wagon are loaded with features.

The Century Wagon is especially attractive as a premium automobile with substantial cargo-carrying capability.

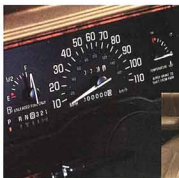
Part of its luxury is space—up to 74.4 cubic feet of cargo space included. Century Wagon's standard engine is

the muscular 3100 V6, available on the Special Sedan, providing plenty of smooth, whisper-quiet power for

hauling a load or effortless cruising. Both Sedan and Wagon list such features as Tilt-Wheel™ adjustable

steering column, power rack-and-pinion steering and anti-lock brakes.

The Century Special Wagon shows practicality in a stunning light.



Century's instrument panel features large, legible gauges and easily reached controls.



Traditional elegance and surprising comfort are offered in Century's standard rich cloth upholstery.

STANDARD AND AVAILABLE EQUIPMENT*

	Special Sedan	Special Wagon
(S) standard; (A) available		
Mechanical		
Battery - Delco Freedom II Plus	S	S
Brake/transmission interlock	S	S
Brakes - anti-lock, power front disc/rear drum	S	S
Chassis springs - computer-selected	S	S
Cooling - engine and transmission	S	S
Cruise control - electronic	—	A
Drive - front-wheel	S	S
Engine - 2.2-litre I4 with PFI	S	—
Engine - 3100 SFI V6	A	S
Engine mounts - hydraulic-tuned	S	S
Remote keyless entry	A	A
Steering - power rack-and-pinion	S	S
Struts - gas cylinder hood supports	S	S
Suspension - DynaRide®	S	—
Suspension - front, independent MacPherson strut	S	S
Transmission - 3-speed automatic	S	—
Transmission - electronically controlled 4-speed automatic with overdrive	A	S
Wipers - 2-speed with low-speed delay feature	S	S
Interior		
Acoustical Package	S	S
Air bag - driver (SRS**)	S	S
Air conditioning - CFC-free	S	S
Armrest - front-seat storage with dual cup holders	S	S
Carpet - load-area floor	—	S
Carpet savers - front and rear	A	A
Defogger - front and side window outlets	S	S
Defogger - rear-window, electric	S	S
Electronic warning tone - ignition key; safety belts; turn signal, headlamps "on"	S	S
Head restraints - adjustable, front-seat	S	S
Instrumentation - includes speedometer, trip odometer, and fuel and temperature gauges	S	S
Lamp - center, high-mounted stop	S	S
Light - rear compartment	—	S
Lights - ashtray, instrument panel courtesy, dome, glove box, trunk and engine compartments and map	S	S
Lights - front-seat reading	S	S
Mirrors, visor vanity - nonlighted, cloth-covered, driver and passenger	S	S
Recliners - power seatback, driver and passenger	S	S
Safety belts - automatic front safety system	S	S
Safety belts - rear-seat, lap and shoulder	S	S
Seat - 6-way power, driver	A	A
Seat - folding third (always vinyl)	—	A
Seatback - split, folding rear	—	S
Seats - cloth 55/45 with storage armrest	S	S
Security cover - cargo area	—	A
Steering column - Tilt-Wheel™ adjustable	S	S
Steering wheel - deluxe (with SRS)	S	S
Storage compartments - lockable load area, floor	—	S
Tailgate release - electric, remote	—	S
Trunk convenience net	A	—
Trunk lock release - remote	S	—
Exterior		
Air deflector - rear	—	S
Bumper guards - front and rear	S	S
Bumper protective strips - black, front and rear	—	S
Bumper protective strips - body-color, front and rear	S	—
Door edge guards	A	A
Glass - Soft-Ray tinted	S	S
Headlamps - composite tungsten-halogen	S	S
Mirrors, outside rearview - deluxe, black, left remote, right manual	S	S



Century Special Sedan



Century Special Wagon

CONTINUED

	Special Sedan	Special Wagon
(S) standard; (A) available		
Roof rack	—	A
Stripe - single, body-side	A	A
Tire - compact spare	S	S
Tires - P185/75R14 steel-belted, radial-ply, all-season blackwall	S	S
Tires - P185/75R14 steel-belted, radial-ply, all-season whitewall	A	A
Tires - P195/75R14 steel-belted, radial-ply, all-season blackwall	—	A
Tires - P195/75R14 steel-belted, radial-ply, all-season whitewall	—	A
A) Wheelcovers - 14" deluxe, chrome	S	S
B) Wheelcovers - 14" styled, chrome	A	A
C) Wheelcovers - 14" custom, locking, wire	A	A
D) Wheels - 14" styled, steel	A	A
E) Wheels - 14" aluminum	A	A
Windows - power	S	S
Window washer/wiper - tailgate	—	A

AUDIO SYSTEMS

	Special Sedan	Special Wagon
Antenna - fixed-mast	S	S
Antenna - automatic power	A	A
Radio - ETR® AM-FM stereo with seek and scan, and clock	S	S
Radio - ETR® AM-FM stereo with seek and scan, cassette player with auto reverse, and clock	A	A
Speakers - dual, standard-range front, extended-range rear	S	S
Speakers - premium, dual, front and rear coaxial	A	—

*Partial listing only - see your dealer for complete lists and details.
**Supplemental Restraint System.

OPTION PACKAGE EQUIPMENT

	Special Wagon SC	Special Sedan SK	SL
(SC) Luxury Package; (SK) Custom Package; (SL) Limited Package			
Carpet savers - front and rear	■	■	■
Cruise control - electronic	■	■	■
Engine - 3100 V6	■	■	■
Mirrors, outside rearview - deluxe, black, electric, left and right remote	■	■	■
Radio - ETR® AM-FM stereo with seek and scan, cassette player with auto reverse, and clock	■	■	■
Remote keyless entry	■	■	■
Seat - 6-way power, driver	■	■	■
Seats - custom cloth 55/45 split bench	■	■	■
Seats - leather 55/45 split bench	■	■	■
Speaker system - premium, dual, front and rear coaxial	■	■	■
Tires - P185/75R14 steel-belted, radial-ply, all-season whitewall	■	■	■
Tires - P195/75R14 steel-belted, radial-ply, all-season whitewall	■	■	■
Transmission - electronically controlled 4-speed automatic with overdrive	■	■	■
Trunk convenience net	■	■	■
Wheelcovers - 14" styled, chrome	■	■	■
Wheelcovers - 14" custom, locking, wire	■	■	■

SPECIFICATIONS

Engine	
Type (Sedan)	2.2-litre 2200 L4 with PFI ⁽¹⁾
Horsepower	120 @ 5200 rpm
Torque	130 @ 4000 rpm
Type (Sedan/Wagon)	3.1-litre 3100 SFI™ V6
Horsepower	160 @ 5200 rpm
Torque	185 @ 4000 rpm
Towing	
3100 V6	2.97 final drive ratio
	2,000 maximum gross trailer rate (lbs) ⁽²⁾⁽³⁾

- (1) Port fuel injection.
- (2) Not recommended on Century Wagon.
- (3) Sequential fuel injection.
- (4) Trailer towing in mountainous, high temperature areas requires the installation of the Dethman-Bush Auxiliary Cooler (dealer-installed).
- (5) When properly equipped. Includes weight of trailer, cargo, passengers and equipment. All towing recommendations are subject to change. Check with your Buick dealer for the latest information. Trailer tongue load should be 10% of the maximum trailer weight but should not exceed the load rating specified for that vehicle, engine or hitch combination.



Capacity	Sedan	Wagon
Trunk, cu ft	16.2	—
Max. cargo, cu ft	—	74.4
Fuel tank, gal	16.5 ⁽¹⁾	16.5 ⁽¹⁾
Base curb weight, lbs	2,951	3,196
<small>(1) Fuel tank capacity reduced to 15.8 gallons when fueled via super recovery nozzle.</small>		
Dimensions (inches)		
Length	189.1	190.9
Width	69.4	69.4
Height	54.2	54.2
Wheelbase	104.9	104.9
Front tread	58.7	58.7
Rear tread	56.7	56.7

Interior (inches)	front/rear	front/rear
Legroom	42.1/35.9	42.1/34.8
Headroom	38.6/38.3	38.6/38.9
Shoulder room	55.9/56.0	55.9/56.0
Hip room	50.0/54.3	50.0/54.3



S K Y L A R K

Skylark provides peace of mind in a freshly redesigned package. Quality and dependability have never looked this good—and the beautiful new Skylark offers power and comfort to match. However one measures personal achievement, Skylark is a fitting reward, indeed.

S K Y L A R K

The appealing Gran Sport Coupe takes to the road with comfort and control.



Available Delco ETR® AM-FM stereo radio with CD player, graphic equalizer and premium speakers.



A car for all the senses, this sleek, new Skylark advances the decision-making process in a number of ways. Its stunning redesign is a visual stimulant. Your sense of logic will certainly be activated by the deeply comfortable seating in the newly designed interior, by the powerful engine choices from a lively, new 2.4-litre I4 to an available 3100 V6, by the child security locks and traction control, and by the attractive options that suit your personal sense of style. With all the Skylark models available, and their affordable combinations of

Skylark Gran Sport's engaging cockpit shown with available fine leather in seating areas.

features and quality, common sense will prevail in any case.



Available steering wheel radio controls continue the ergonomic ease of Skylark's new instrument panel.

Gran Sport offers a sportier feel with its stiffer Gran Touring suspension and 16-inch aluminum wheels.





S K Y L A R K

The appealing Gran Sport Coupe takes to the road with comfort and control.



Available Delco ETR® AM-FM stereo radio with CD player, graphic equalizer and premium speakers.



A car for all the senses, this sleek, new Skylark advances the decision-making process in a number of ways. Its stunning redesign is a visual stimulant. Your sense of logic will certainly be activated by the deeply comfortable seating in the newly designed interior, by the powerful engine choices from a lively, new 2.4-litre I4 to an available 3100 V6, by the child security locks and traction control, and by the attractive options that suit your personal sense of style. With all the Skylark models available, and their affordable combinations of

Skylark Gran Sport's engaging cockpit shown with available fine leather in seating areas.

features and quality, common sense will prevail in any case.



Available steering wheel radio controls continue the ergonomic ease of Skylark's new instrument panel.



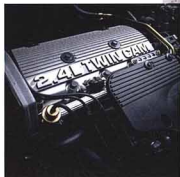
Gran Sport offers a sportier feel with its stiffer Gran Touring suspension and 16-inch aluminum wheels.

S K Y L A R K

Standard traction control helps prevent loss of traction on slippery surfaces.



The new standard 2.4-litre twin cam fuel-injected engine provides smooth and responsive power.



A sense of personal empowerment is immediate in Skylark's choice of engines—smooth operation, quickness and advanced design are all part of the new 2.4-litre twin cam fuel-injected engine, standard on Custom and Limited. Then the powerful 3100 V6, standard on Gran Sport and available on other models, graphically shows the spirited performance built into every Buick. Add standard traction control, four-speed automatic transmission with overdrive, and refined anti-lock brakes to the smooth Buick ride—and whichever Skylark you choose will, in every sense, be the right choice.

The newly redesigned Limited Sedan's grille precedes 2.4-litre twin cam power and DynaRide® comfort.



Skylark's available leather-covered shifter and full-length console go hand-in-glove with its rich cockpit. (Not available on Custom.)



Limited Coupe employs a 150-horsepower 2.4-litre twin cam engine as a standard feature.



*The redesigned
Skyark Custom Coupe
features a new 16-valve
twin cam engine with
150 horsepower.*



*Stylish 14-inch polycast
wheels are available on
Skyark Custom Sedan.
The PassLock anti-theft
system is standard.*



S K Y L A R K



Bold analog gauges are grouped for easy reading, and controls are within arm's reach.



Driver and right front passenger air bags, used with three-point safety belts, can help prevent injury in certain frontal impacts of 14 mph or greater.

An important shared trait, Buick quality, is designed into all 1996 Skylarks—and a generous list of standard and optional features makes value a shared characteristic as well. Custom, Limited and Gran Sport allow you an array of possibilities. Shared standard features include anti-lock brakes, power rack-and-pinion steering, traction control, electronically controlled four-speed automatic transmission, full carpeting, automatic power door locks, front-wheel drive, air conditioning, left and right remote manual outside mirrors—and more.

Custom's richly upholstered cloth bench seat features a fold-down center storage armrest.

And your range of options gives "personal best" fresh meaning.



Skylark features single-key convenience for ignition and trunk.

Lock or unlock your car, turn on the interior lights, open the trunk, with available remote keyless entry.

STANDARD AND AVAILABLE EQUIPMENT*

	Custom Coupo/Sedan	Limited Coupo/Sedan	Gran Sport Coupo/Sedan
(S) standard; (A) available			
Mechanical			
Anti-theft system - Passlock™	S	S	S
Battery - Delco Freedom II (Rundown Protection System)	S	S	S
Brakes - anti-lock, power front disc/rear drum	S	S	S
Drive - front-wheel	S	S	S
Engine - 2.4-litre Twin Cam I4	S	S	—
Engine - 3.1-litre 3100 SFI V6	A	A	A
Engine block heater	A	A	A
Exhaust system - stainless steel	S	S	S
Fuel filler door release - remote	S	S	S
Remote keyless entry	—	A	A
Security locks - rear-door, child	—	S	S
Steering - power rack-and-pinion	S	S	S
Suspension - Dynalife®	S	S	S
Suspension - front independent MacPherson strut/rear tubular axle spring-on-center	S	S	S
Suspension - Gran Touring	—	—	S
Traction control system	S	S	S
Transmission - electronically controlled, 4-speed automatic	S	S	S
Interior			
Air bags - driver and right front-seat passenger			
Supplemental Restraint System (SRS)	S	S	S
Air conditioning - CFC-free	S	S	S
Armrest - front-seat storage with dual cup holders (split bench seat)	A	A	A
Carpet savers - front and rear	S	S	S
Console - front overhead storage (with integral courtesy lights)	S	S	S
Console - full-length operating with bucket seats	A	A	A
Cruise control - electronic	A	A	S
Defogger - rear-window, electric	S	S	S
Door - map pockets and pull straps	S	S	S
Door locks - automatic power	S	S	S
Electronic warning tone - safety belts; ignition key; turn signal, headlamps "on"	S	S	S
Heat ducts - rear-seat	S	S	S
Instrumentation - backlit analog gauge cluster with speedometer, trip odometer, oil level indicator, and coolant temperature and fuel gauges	S	S	S
Instrumentation - backlit analog cluster with speedometer, tachometer, voltmeter, trip odometer, oil level indicator, and oil pressure, temperature and fuel gauges	A	A	A
Lights - ashtray, glove box, engine compartment, instrument panel and front courtesy, and trunk compartment	S	S	S
Lights - theater dimming, delayed entry lighting, and delayed exit lighting	S	S	S
Multifunction control lever - turn signal, headlamp high/low beam, windshield wiper/washer controls	S	S	S
Recliners - seatback, driver and passenger	S	S	S
Safety belts - manual front and rear safety system with front comfort adjuster and child comfort guide	S	S	S
Seat - 6-way power, driver	A	A	A
Seat - lumbar control, driver	—	O	O
Seats - cloth 55/45 split bench	S	S	—
Seats - cloth bucket with full-length operating console	A	A	A
Seats - leather trim bucket; includes leather-wrapped shifter and steering wheel, cruise control, and up-level instrument cluster	—	—	A
Seats - split, folding rear seatback with inertia lock	—	—	A
Shift handle - leather-wrapped (included with leather seats)	—	A	A
Steering column - Tilt-Wheel™ adjustable	S	S	S



Skylark Custom Sedan



Skylark Custom Coupe



Skylark Limited Sedan



Skylark Limited Coupe



Skylark Gran Sport Sedan



Skylark Gran Sport Coupe

CONTINUED

	Custom Coupo/Sedan	Limited Coupo/Sedan	Gran Sport Coupo/Sedan
(S) standard; (A) available			
Steering wheel - leather-wrapped (with SRS**); included with leather seats	—	A	A
Trunk convenience net	—	S	S
Trunk lock release - remote	S	S	S
Exterior			
Astorroof - electric, sliding	A	A	A
Glass - Soft-Ray tinted	S	S	S
Headlamps - composite tungsten-halogen	S	S	S
Mirrors, outside rearview - deluxe, black, left remote, right manual	S	S	—
Mirrors, outside rearview - deluxe, black, electric, left and right remote	—	—	S
Tire - compact spare	S	S	S
Tires - P195/70R14 steel-belted, radial-ply, all-season blackwall	S	S	—
Tires - P205/55R16 steel-belted, radial-ply, Eagle GA Touring blackwall	—	—	S
Tires - P195/75R14 steel-belted, radial-ply, all-season whitewall	A	A	—
Tires - P195/65R15 steel-belted, radial-ply, TA touring blackwall	A	A	A
A) Wheelcovers - 14" styled	S	S	—
B) Wheels - 14" polycast (not available with whitewalls)	A	A	S
C) Wheelcovers - 15" styled	A	A	A
D) Wheels - 16" aluminum	—	—	S
Windows - power with driver's "express-down"; passenger lockout on Sedan	A	A	S
Wipers - 2-speed with low-speed delay feature	S	S	S

AUDIO SYSTEMS

	Custom Coupo/Sedan	Limited Coupo/Sedan	Gran Sport Coupo/Sedan
Antenna - fixed mast, black	S	S	S
Radio - ETR® AM-FM stereo with seek and scan, and clock	S	S	—
Radio - ETR® AM-FM stereo with seek and scan, cassette player, and clock	A	A	S
Radio - ETR® AM-FM stereo with seek and scan, cassette player with auto reverse, automatic tone control, and clock	A	A	A
Radio - ETR® AM-FM stereo with seek and scan, compact disc player, automatic tone control, and clock	A	A	A
Radio - ETR® AM-FM stereo with seek and scan, combination cassette and compact disc players, automatic tone control, and clock	A	A	A
Speakers - dual, extended-range front and rear	S	S	S
Speakers - Concert Sound II	—	A	A

*Partial listing only - see your Buick dealer for complete lists and details.
**Supplemental Restraint System.

SPECIFICATIONS

Engine	
Type	2.4-litre Twin Cam I4
Horsepower	150 @ 6000 rpm
Torque	150 @ 4400 rpm
Type	3.1-litre 3100 SFI™ V6
Horsepower	155 @ 5200 rpm
Torque	185 @ 4000 rpm
Towing	
3100 V6	2.93 final drive ratio
	1,000 maximum gross trailer rate (lbs) ⁽²⁾

(1) Sequential-port fuel injection.
(2) When properly equipped. Includes weight of trailer, cargo, passengers and equipment. All towing recommendations are subject to change. Check with your Buick dealer for the latest information. Trailer tongue load should be 10% of the maximum trailer weight but should not exceed the load rating specified for that vehicle, engine or hitch combination.



Capacity	Coupe	Sedan
Trunk, cu ft	13.3	13.3
Fuel tank, gal	15.2	15.2
Base curb weight, lbs	2,917	2,948

Dimensions (inches)		
Length	189.3	189.3
Width	67.6	67.6
Height	53.6	53.6
Wheelbase	103.4	103.4
Front tread	55.8	55.8
Rear tread	55.3	55.3

Interior (inches)	front/rear	front/rear
Legroom	43.1/32.5	43.1/33.4
Headroom	37.8/36.5	37.8/37.0
Shoulder room	52.3/55.0	52.3/52.3
Hip room	49.5/50.4	49.6/50.9

The 3800 Series II Supercharged engine maintains six-cylinder fuel efficiency while delivering 240 horsepower.



Fuel efficient four-cylinder engines are powerful, too. The 2.4-litre Twin Cam L4 delivers 150 horsepower.

**3800
SERIES II**

Turning power into pleasure is another facet of Buick quality, and it's one which wins awards; the 3800 Series II V6 was recently judged one of the top ten engines in the world.* The V6 engine has been brought into a sphere of power/efficiency credibility that heretofore was enjoyed only by the V8—while providing an excellent level of fuel efficiency. Each engine represents its own achievement of a single goal—to enhance, to the highest degree, your Buick experience. Smooth, linear acceleration and inspiring power on demand, at all stages of the power band, are characteristics of all engines used in Buicks.

The 3800 Series II V6 was voted one of the industry's best engines by Ward's Auto World.

SPECIFICATIONS

Engine	Fuel System	Horsepower	Torque (ft-lb)	EPA City/hwy	Availability
3800 Series II V6	SFI ⁽¹⁾	205 @ 5200 rpm	230 @ 4000 rpm	19/29	Riviera, Park Avenue, LeSabre, Regal
3800 Series II Supercharged V6	SFI ⁽¹⁾	240 @ 5200 rpm	280 @ 3200 rpm	17/27	Riviera, Park Avenue Ultra
5.7L V8	SFI ⁽¹⁾	260 @ 5000 rpm	330 @ 2400 rpm	17/25	Roadmaster, Roadmaster Wagon
3100 V6	SFI ⁽¹⁾	160 @ 5200 rpm	185 @ 4000 rpm	20/29	Regal, Century
		155 @ 5200 rpm	185 @ 4000 rpm	21/29	Skylark
2.4L L4	SFI ⁽¹⁾	150 @ 6000 rpm	150 @ 4400 rpm	22/32	Skylark
2.2L L4	PFI ⁽²⁾	120 @ 5200 rpm	130 @ 4000 rpm	25/32	Century Sedan
				22/29	Century Wagon

*Source: Ward's Auto World 1995. (1)Sequential port fuel injection. (2)Port fuel injection.



106

S A F E T Y

Steel side door beams help protect occupants in the event of a side-impact collision.



Braking performance and steering control on most slippery surfaces are enhanced by standard anti-lock braking.

Leadership in safety engineering is a point of pride with Buick—and a distinction that inspires confidence for the owner of any Buick automobile. In 1924, GM and Buick established the world's first automotive proving grounds, and the world's first safety tests. Today, that facility performs many tests daily, in ongoing efforts for safety improvements in new car design. Buick offered air bags in 1974—those air bags are still working today, and Buick's safety technology has only improved since. GM uses 24 times as many tests and evaluations as the government requires to confirm air bag deployment performance.

The safety needs of a fully grown adult are different than those of a child. So GM uses a family of different size crash-test dummies to test and evaluate safety.

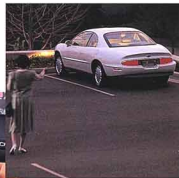


Advanced structural engineering developed Riviera's incredibly strong 25 Hz body structure, leading the way to strengthening all Buick body structures.



S A F E T Y

In an emergency, you can set off the instant alarm, flashing lights and sounding horn, with a touch of the key fob.



PASS-Key® II ensures that only your key will start your Buick. (Not available on Century and Skylark.)

Lighting the way to safety technology, Buick continues to make your safety and security paramount.

Special electrochromic rearview mirrors, for example, dim automatically and continuously, reducing annoying and dangerous headlamp glare up to 94 percent. There are many advanced safety/security features engineered into Buicks, like air bags, automatic door locks, child security door locks, door warning lights or reflectors, audible brake-wear indicators, anti-lock brakes, traction control, and many more. Buick puts a bright light, indeed, on the subject of peace of mind.

Light your Buick's interior from up to 30 feet away with remote keyless entry. (See chart on pages 109-110 for availability of features on specific Buick models.)

Rear-seat shoulder belt adjuster adapts to a comfortable fit for children and small adults.



Twilight Sentinel® delay-headlamps-off feature can lend you comforting assistance from car to home.



S A F E T Y

Safety Features	Riviera	Park Avenue	Roadmaster	LeSabre	Regal	Century	Skylark
1 Anti-Lock Brakes, Front and Rear	■	■	■	■	■	■	■
2 Brake/Transmission Shift Interlock	■	■	■	■	■	■	■
3 Disc Brakes, Front	■	■	■	■	■	■	■
4 Disc Brakes, Front and Rear	■	■	■	■	■	■	■
5 Disc Brakes, Audible Wear Indicator	■	■	■	■	■	■	■
6 Dual Master Cylinder/Warning Light	■	■	■	■	■	■	■
7 Maintenance-Free Battery	■	■	■	■	■	■	■
8 Safety Road Wheel Rims	■	■	■	■	■	■	■
9 Tires with Built-In Tread Wear Indicators	■	■	■	■	■	■	■
10 Traction Control	□	□	□	□	□	□	□
11 Audible Reminder, Ignition Key Removal	■	■	■	■	■	■	■
12 Laser-Etched VIN Plate	■	■	■	■	■	■	■
13 PASS-Key® II Theft-Deterrent System	■	■	■	■	■	■	■
14 Remote Decklid Release	■	■	■	□	□	□	■
15 Remote Hood Release	■	■	■	■	■	■	■
16 Remote Keyless Entry	■	□*	□*	□*	□	□	□*
17 Backup Lamps	■	■	■	■	■	■	■
18 Center High-Mounted Stop Lamp	■	■	■	■	■	■	■
19 Cornering Lamps	□	□*	□*	□*	□	□	■
20 Door Warning Lights or Reflectors	■	■	■	■	■	■	■
21 Four-Way Hazard Warning Flashers	■	■	■	■	■	■	■
22 Halogen Headlamps	■	■	■	■	■	■	■
23 Inside Day/Night Rearview Mirror, Manual	■	■	■	■	■	■	■
24 Inside Day/Night Rearview Mirror, Electrochromic	□	□	□*	□*	□	□	■
25 Outside Rearview Mirrors	■	■	■	■	■	■	■
26 Outside Rearview Mirrors, Power	■	■	■	□	□	□	□
27 Outside Rearview Mirrors, Heated	■	□	■	■	■	■	■
28 Parking Lamps	■	■	■	■	■	■	■
29 Rear-Window Defogger	■	■	■	■	■	■	■
30 Side Marker Lamps/Reflectors	■	■	■	■	■	■	■
31 Side-Window Defogger, Front	■	■	■	■	■	■	■
32 Tinted-Glass Windshield	■	■	■	■	■	■	■
33 Solar-Control Glass	■	■	■	■	■	■	■
34 Solar-Control Windshield	■	■	□*	■	■	■	■
35 Twilight Sentinel	□	□	□*	□*	■	■	■
36 Windshield Defroster/Washer/Wiper	■	■	■	■	■	■	■
37 Automatic Lap/Shoulder Belts, Front Outboard Seating Positions	■	■	■	■	■	■	■
38 Manual Lap Belts, Front and Rear Center Seating Positions	■	■	■	■	■	■	■
39 Manual Lap/Shoulder Belts, Front Outboard Seating Positions	■	■	■	■	■	■	■
40 Manual Lap/Shoulder Belts, Rear Outboard Seating Positions	■	■	■	■	■	■	■
41 Adjustable Shoulder Belt Anchors, Front (Sedan)	■	■	■	■	■	■	■
42 Shoulder Belt Comfort Guides, Rear	■	■	■	■	■	■	■
43 Air Bag, Driver	■	■	■	■	■	■	■
44 Air Bag, Right Front Passenger	■	■	■	■	■	■	■
45 Automatic Door Locks	■	■	□*	■	■	■	■
46 Belt-Use Reminder System	■	■	■	■	■	■	■

Safety Features (continued)	Riviera	Park Avenue	Roadmaster	LeSabre	Regal	Century	Skylark
47 Child Seat, Dual-Mode Retractor	■	■	■	■	■	■	■
48 Child Seat, Locking Latch Plate	■	■	■	■	■	■	■
49 Child Security Door Locks (Sedan)	■	■	■	■	■	■	■
50 Crush Zones, Front and Rear	■	■	■	■	■	■	■
51 Dual Hood Latch	■	■	■	■	■	■	■
52 Emergency Belt-Locking Retractors	■	■	■	■	■	■	■
53 Energy-Absorbing Instrument Panel	■	■	■	■	■	■	■
54 Energy-Absorbing Steering Column	■	■	■	■	■	■	■



55 Folding Front Seatback Locks (Coupe)	■	■	■	■	■	■	■
56 Folding Hood	■	■	■	■	■	■	■
57 Head Restraints, Front (Separate/Integral)	■	■	■	■	■	■	■
58 Laminated Windshield Glass	■	■	■	■	■	■	■
59 Pressure-Relief Fuel Cap	■	■	■	■	■	■	■
60 Side Door Beams	■	■	■	■	■	■	■
61 Tempered Safety Glass	■	■	■	■	■	■	■

(■) standard; (□) optional; (□*) optional some models



1996 Buick
 1997 Buick
 1998 Buick
 1999 Buick
 2000 Buick
 2001 Buick
 2002 Buick
 2003 Buick
 2004 Buick
 2005 Buick
 2006 Buick
 2007 Buick
 2008 Buick
 2009 Buick
 2010 Buick
 2011 Buick
 2012 Buick
 2013 Buick
 2014 Buick
 2015 Buick
 2016 Buick
 2017 Buick
 2018 Buick
 2019 Buick
 2020 Buick
 2021 Buick
 2022 Buick
 2023 Buick
 2024 Buick
 2025 Buick
 2026 Buick
 2027 Buick
 2028 Buick
 2029 Buick
 2030 Buick

1996 QualitySafety Brochure
 1996 Leasing Brochure

1996 Buick
 1997 Buick
 1998 Buick
 1999 Buick
 2000 Buick
 2001 Buick
 2002 Buick
 2003 Buick
 2004 Buick
 2005 Buick
 2006 Buick
 2007 Buick
 2008 Buick
 2009 Buick
 2010 Buick
 2011 Buick
 2012 Buick
 2013 Buick
 2014 Buick
 2015 Buick
 2016 Buick
 2017 Buick
 2018 Buick
 2019 Buick
 2020 Buick
 2021 Buick
 2022 Buick
 2023 Buick
 2024 Buick
 2025 Buick
 2026 Buick
 2027 Buick
 2028 Buick
 2029 Buick
 2030 Buick

QUALITY PLUS



The container of your spare key is also your assurance of efficient roadside service with the handy 800 number



Customer Assistance is available by calling 1-800-521-7300.

Something more comes with your new Buick. Quality Plus. It starts with a comfortable feeling as you walk through the door. After you have selected your new Buick, Quality Plus Delivery is the process that the dealer initiates to make sure your new Buick is ready to drive away, with all your questions answered. The limited Bumper to Bumper Warranty is a 3-year or 36,000-mile (whichever comes first) warranty, and the repairs covered by it include Courtesy Transportation. Quality Plus also includes a Customer Assistance toll-free number. The plus in all this for us is that all your future cars will probably be Buicks.


Buick is dedicated to building great automobiles and great customer relations.



Warranty repairs include Courtesy Transportation—see your dealer for details of this limited warranty.

Quality Plus Delivery assures a completely ready car, and all your questions answered.




BUSINESS REPLY MAIL
 FIRST-CLASS MAIL PERMIT NO. 307 BLOOMFIELD HILLS, MI

POSTAGE WILL BE PAID BY ADDRESSEE

BUICK INFORMATION CENTER
 PO BOX 2255
 FLINT MI 48051-9920




NO POSTAGE
NECESSARY IF
MAILED IN THE
UNITED STATES

Q U A L I T Y P L U S



The container of your spare key is also your assurance of efficient roadside service with the handy 800 number.



Customer Assistance is available by calling 1-800-521-7300.

Something more comes with your new Buick. Quality Plus. It starts with a comfortable feeling as you walk through the door. After you have selected your new Buick, Quality Plus Delivery is the process that the dealer initiates to make sure your new Buick is ready to drive away, with all your questions answered. The limited Bumper to Bumper Warranty is a 3-year or 36,000-mile (whichever comes first) warranty, and the repairs covered by it include Courtesy Transportation. Quality Plus also includes a Customer Assistance toll-free number. The plus in all this for us is that all your future cars will probably be Buicks.

Buick is dedicated to building great automobiles and great customer relations.



Warranty repairs include Courtesy Transportation—see your dealer for details of this limited warranty.

Quality Plus Delivery assures a completely ready car and all your questions answered.

Waterborne paint reduces hydrocarbon emissions in painting—and provides a long-lasting finish.

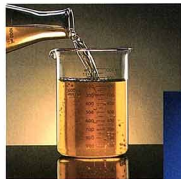


Ozone-depleting CFC has been eliminated from all Buick air conditioning systems.

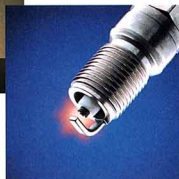


Quality of life is certainly a concern of Buick quality. And Buick's concern for the environment we all share extends far beyond meeting a few requirements. Each year, engine emissions, fuel economy and horsepower efficiency are high priorities. We find ways to reduce waste—an example is metal trimmings that are reused during the manufacturing process. Antifreeze and chemicals that could harm the ecosystem, if not carefully handled, are recycled at Buick plants and dealerships. It's in our nature to be concerned about these matters—because they do matter. To all of us.

Long-life engine coolants have been developed to eliminate the need for frequent changing of fluids.



Platinum-tipped spark plugs provide extended life and maintenance intervals.



Important:

A word about this catalog. We have tried to make this catalog as comprehensive and factual as possible. We reserve the right, however, to make changes at any time, without notice, in prices, colors, materials, equipment, specifications, models and availability. Since some information may have been updated since the time of printing, please check with your Buick dealer for complete details. Some models as shown may not be available in California.

A word about engines.

Buicks are equipped with engines produced by different operating units of GM, its subsidiaries or GM suppliers worldwide.

A word about assembly of Buicks.

Buicks are assembled by different operating units of General Motors, its subsidiaries or GM suppliers worldwide. Buicks incorporate thousands of components produced by different operating units of GM, its subsidiaries or GM suppliers worldwide. We sometimes find it necessary to produce Buicks with different or differently sourced components than originally

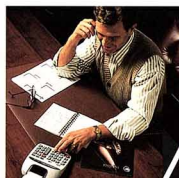
scheduled. All such components have been approved for use in Buicks and will provide the quality performance associated with the Buick name. Since some options may be unavailable when your vehicle is assembled, we suggest you verify with your dealer that your vehicle includes the equipment you ordered, or if there are changes, that they are acceptable to you.

A word about updated service information.

Buick regularly sends its dealers useful service bulletins about Buick products. Buick monitors product performance in the field. We then prepare bulletins for servicing our products better. Now you can receive these bulletins, too. Ask your dealer. For ordering information, call toll-free 1-800-551-4123.

A word about warranty.

The GM 3-year/36,000-mile limited Bumper to Bumper Warranty covers repairs for any new Buick, including labor and parts, to correct any defects in material or workmanship occurring during the warranty period. The complete vehicle (including tires) will be covered for 3 years or 36,000 miles, whichever comes first. See your Buick dealer for terms of this limited warranty. Supplemental



Get the 16-page Buick SmartLease® brochure and you may discover leasing a new Buick is for you.



A \$1,000 rebate is available through the GM Mobility Program for disabled drivers desiring specially equipped Buicks. Call 1-800-323-9935.

Restraint System coverage is 3 years regardless of mileage.

A word about Buick SmartLease.®

Buick leasing is different from other programs. Find out why a growing number of Buick drivers are sold on leasing. Ask your dealer for details, or call 1-800-32-SMART for more information.

Buick product information.

Call 1-800-4A-BUICK.

The GM Card.®

For information or to apply for the GM Card or GM Gold Card, call 1-800-8GM-CARD.



The GM Card® can help you buy your next Buick.



©1995 GM Corp. All rights reserved. Buick, Century, Regal, LeSabre, Park Avenue, Roadmaster and Roadmaster are registered trademarks and Estate Wagon is a trademark of GM Corp. Buick is a trademark of GM Corp.



Printed on recyclable paper from a renewable source. Ident. No. 95 84 000 Printed in U.S.A. 2.4mm

RIVIERA

SIERRA-GRAIN LEATHER
Blue, Gray, Jadestone (shown), Taupe, Dark Ruby Red

PRESTWICK CLOTH
Blue, Gray, Taupe (shown), Dark Ruby Red

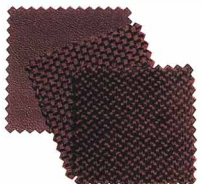


LE SABRE

SIERRA-GRAIN LEATHER
Blue, Gray, Taupe, Dark Ruby Red (shown)

STATURE CLOTH
Blue, Gray, Taupe, Dark Ruby Red (shown)

WILTSHIRE CLOTH
Blue, Gray, Taupe, Dark Ruby Red (shown)



PARK AVENUE ULTRA

SIERRA-GRAIN LEATHER
Blue, Gray (shown), Lt. Green, Taupe, Dark Ruby Red

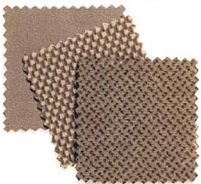


REGAL

SIERRA-GRAIN LEATHER
Blue, Gray, Taupe (shown), Red

STATURE CLOTH
Blue, Gray, Taupe (shown), Red

WILTSHIRE CLOTH
Blue, Gray, Taupe (shown), Red



PARK AVENUE

SIERRA-GRAIN LEATHER
Blue, Gray, Lt. Green (shown), Taupe, Dark Ruby Red

GALLANT CLOTH
Blue, Gray, Lt. Green (shown), Taupe, Dark Ruby Red



CENTURY

SIERRA-GRAIN LEATHER
Blue (shown), Gray, Taupe, Dark Ruby Red

REGIMENT CLOTH
Blue (shown), Gray, Taupe, Dark Ruby Red

CARILLON CLOTH
Blue (shown), Gray, Taupe, Dark Ruby Red

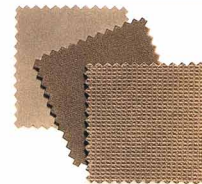


ROADMASTER

SIERRA-GRAIN LEATHER
Blue, Gray, Beige (shown), Taupe, Red

GALLANT CLOTH
Blue, Gray, Beige (shown), Dark Ruby Red

PRESTWICK CLOTH
Blue, Gray, Beige (shown), Dark Ruby Red



SKYLARK

SIERRA-GRAIN LEATHER
Graphite (shown), Jadestone, Taupe, Red

REGIMENT CLOTH
Graphite (shown), Jadestone, Taupe, Red

WILTSHIRE CLOTH
Graphite (shown), Jadestone, Taupe, Red



Note:
Leathers and cloths shown are in seating areas only.



RIVIERA

Exterior

- Bright White (16)
- Bright White Diamond Metallic* (78)
- Sandstone Beige Metallic* (50)
- Pahoua Gray Metallic* (03)
- Mediana Autumn Green Metallic* (47)
- Light Jadestone Metallic* (34)
- Graphite Metallic* (43)
- Dark Arctic Blue Metallic* (36)
- Medium Blue Metallic* (30)
- Ruby Red Metallic* (72)
- Dark Cherry Metallic* (77)
- Black (41)

Interior

- Blue, Gray, Jadestone, Taupe, Dark Ruby Red
- Blue, Gray, Jadestone, Taupe, Dark Ruby Red
- Taupe, Dark Ruby Red
- Gray, Dark Ruby Red
- Gray, Taupe
- Gray, Jadestone
- Gray, Jadestone, Taupe
- Black
- Blue, Gray, Taupe
- Gray, Taupe, Dark Ruby Red
- Gray, Taupe, Dark Ruby Red
- Gray, Jadestone, Taupe, Dark Ruby Red

LE SABRE

Exterior

- Bright White (16)
- Sandstone Beige Metallic* (50)
- Platinum Gray Metallic* (03)
- Medium Autumn Green Metallic* (47)
- Jamaican Teal Metallic* (42)
- Light Adriatic Blue Metallic* (26)
- Adriatic Blue Metallic* (30)
- Ruby Red Metallic* (72)
- Dark Cherry Metallic* (77)
- Black (41)

Interior

- Blue, Gray, Taupe, Dark Ruby Red
- Taupe, Dark Ruby Red
- Blue, Gray, Dark Ruby Red
- Gray, Taupe
- Gray, Taupe
- Blue, Gray, Taupe
- Blue, Gray, Taupe, Dark Ruby Red
- Gray, Taupe, Dark Ruby Red
- Gray, Taupe, Dark Ruby Red
- Blue, Gray, Taupe, Dark Ruby Red

CENTURY

Exterior

- Bright White (16)
- Bright White Diamond Metallic* (78)
- Sandstone Beige Metallic* (50)
- Pahoua Gray Metallic* (03)
- Mediana Autumn Green Metallic* (47)
- Light Jadestone Metallic* (34)
- Graphite Metallic* (43)
- Dark Arctic Blue Metallic* (36)
- Medium Blue Metallic* (30)
- Ruby Red Metallic* (72)
- Dark Cherry Metallic* (77)
- Black (41)

Interior

- Blue, Gray, Lt. Green, Taupe, Dark Ruby Red
- Blue, Gray, Lt. Green, Taupe, Dark Ruby Red
- Blue, Gray, Lt. Green, Taupe, Dark Ruby Red
- Blue, Gray, Lt. Green, Taupe, Dark Ruby Red
- Blue, Gray, Lt. Green, Taupe, Dark Ruby Red
- Blue, Gray, Lt. Green, Taupe, Dark Ruby Red
- Blue, Gray, Lt. Green, Taupe, Dark Ruby Red
- Blue, Gray, Lt. Green, Taupe, Dark Ruby Red
- Blue, Gray, Lt. Green, Taupe, Dark Ruby Red
- Blue, Gray, Lt. Green, Taupe, Dark Ruby Red
- Blue, Gray, Lt. Green, Taupe, Dark Ruby Red

CENTURY

Exterior

- Bright White (16)
- Sandstone Beige Metallic* (50)
- Platinum Gray Metallic* (03)
- Medium Autumn Green Metallic* (47)
- Jamaican Teal Metallic* (42)
- Light Adriatic Blue Metallic* (26)
- Adriatic Blue Metallic* (30)
- Ruby Red Metallic* (72)
- Dark Cherry Metallic* (77)
- Black (41)

Interior

- Blue, Gray, Taupe, Dark Ruby Red
- Blue, Gray, Taupe, Dark Ruby Red
- Blue, Gray, Taupe, Dark Ruby Red
- Blue, Gray, Taupe, Dark Ruby Red
- Blue, Gray, Taupe, Dark Ruby Red
- Blue, Gray, Taupe, Dark Ruby Red
- Blue, Gray, Taupe, Dark Ruby Red
- Blue, Gray, Taupe, Dark Ruby Red
- Blue, Gray, Taupe, Dark Ruby Red
- Blue, Gray, Taupe, Dark Ruby Red
- Blue, Gray, Taupe, Dark Ruby Red

ROADMASTER

Exterior

- Bright White (16)
- Light Driftwood Metallic* (33)
- Platinum Gray Metallic* (03)
- Dark Jadestone Metallic* (18)
- Light Adriatic Blue Metallic* (36)
- Adriatic Blue Metallic* (30)
- Ruby Red Metallic* (72)
- Dark Cherry Metallic* (77)
- Black (41)

Interior

- Blue, Gray*, Beige, Dark Ruby Red
- Gray, Dark Ruby Red
- Gray*, Beige
- Blue
- Blue, Gray*, Beige
- Gray, Beige, Dark Ruby Red
- Gray*, Beige, Dark Ruby Red
- Gray*, Beige, Dark Ruby Red
- Gray*, Beige, Dark Ruby Red

SKYLARK

Exterior

- Bright White (16)
- Light Sandrift Metallic* (49)
- Medium Jadestone Metallic* (44)
- Caribbean Green Metallic* (37)
- Jamaican Teal Metallic* (42)
- Bright Blue Metallic* (26)
- Royal Magenta Metallic* (05)
- Ruby Red Metallic* (72)
- Black (41)

Interior

- Jadestone, Graphite, Taupe, Red
- Graphite, Taupe
- Jadestone, Graphite, Taupe
- Graphite, Taupe
- Jadestone, Graphite, Taupe
- Graphite, Taupe
- Graphite, Taupe
- Graphite, Taupe, Red
- Graphite, Taupe
- Jadestone, Graphite, Taupe, Red

*Available on leather only

*Not available on Gray Sport.

RIVIERA

SIERRA-GRAIN LEATHER

Blue, Gray, Jadestone (shown), Taupe, Dark Ruby Red

PRESTWICK CLOTH

Blue, Gray, Taupe (shown), Dark Ruby Red

LE SABRE

SIERRA-GRAIN LEATHER

Blue, Gray, Taupe, Dark Ruby Red (shown)

STATURE CLOTH

Blue, Gray, Taupe, Dark Ruby Red (shown)

WILSHIRE CLOTH

Blue, Gray, Taupe, Dark Ruby Red (shown)

SIERRA-GRAIN LEATHER

Blue, Gray, Jadestone (shown), Taupe, Dark Ruby Red

GALLANT CLOTH

Blue, Gray, Lt. Green (shown), Taupe, Dark Ruby Red

SIERRA-GRAIN LEATHER

Blue, Gray, Jadestone (shown), Taupe, Dark Ruby Red

STATURE CLOTH

Blue, Gray, Taupe, Dark Ruby Red (shown)

WILSHIRE CLOTH

Blue, Gray, Taupe, Dark Ruby Red (shown)

PARK AVENUE

SIERRA-GRAIN LEATHER

Blue, Gray, Lt. Green (shown), Taupe, Dark Ruby Red

GALLANT CLOTH

Blue, Gray, Lt. Green (shown), Taupe, Dark Ruby Red

SIERRA-GRAIN LEATHER

Blue (shown), Gray, Taupe, Dark Ruby Red

REGIMENT CLOTH

Blue (shown), Gray, Taupe, Dark Ruby Red

CARLTON CLOTH

Blue, Gray, Med. Green, Taupe, Dark Ruby Red

ROADMASTER

SIERRA-GRAIN LEATHER

Blue, Gray, Beige (shown), Dark Ruby Red

GALLANT CLOTH

Blue, Gray, Beige (shown), Dark Ruby Red

PRESTWICK CLOTH

Blue, Gray, Beige (shown), Dark Ruby Red

SKYLARK

SIERRA-GRAIN LEATHER

Graphite (shown), Jadestone, Taupe, Red

REGIMENT CLOTH

Dark Jadestone (shown), Jadestone, Taupe, Red

Note:
Leathers and cloths shown are in seating areas only.

RIVIERA

Exterior

Bright White (16)
Bright White Diamond Metallic (78)
Sandstone Beige Metallic (50)
Platinum Gray Metallic (03)
Medium Autumn Green Metallic (47)
Light Jadestone Metallic (34)
Majestic Teal Metallic (43)
Light Adriatic Blue Metallic (36)
Adriatic Blue Metallic (30)
Ruby Red Metallic (72)
Dark Cherry Metallic (77)
Black (41)

Interior

Blue, Gray, Jadestone, Taupe, Dark Ruby Red
Blue, Gray, Jadestone, Taupe, Dark Ruby Red
Taupe, Dark Ruby Red
Gray, Dark Ruby Red
Gray, Taupe
Gray, Jadestone
Gray, Jadestone, Taupe
Blue
Blue, Gray, Taupe
Blue, Gray, Taupe, Dark Ruby Red
Gray, Taupe, Dark Ruby Red
Gray, Jadestone, Taupe, Dark Ruby Red

PARK AVENUE ULTRA

Exterior

Bright White (16)
Sandstone Beige Metallic (50)
Platinum Gray Metallic (03)
Medium Autumn Green Metallic (47)
Majestic Teal Metallic (43)
Adriatic Blue Metallic (30)
Dark Adriatic Blue Metallic (39)
Ruby Red Metallic (72)
Dark Cherry Metallic (77)
Black (41)

Interior

Blue, Gray, Med. Green, Taupe, Dark Ruby Red
Taupe, Dark Ruby Red
Blue, Gray, Dark Ruby Red
Lt. Green, Taupe
Gray, Taupe
Blue, Gray
Blue, Gray
Gray, Dark Ruby Red
Gray, Dark Ruby Red
Gray, Taupe, Dark Ruby Red

PARK AVENUE

Exterior

Bright White (16)
Sandstone Beige Metallic (50)
Platinum Gray Metallic (03)
Light Autumn Green Metallic (58)
Medium Autumn Green Metallic (47)
Majestic Teal Metallic (43)
Light Adriatic Blue Metallic (36)
Adriatic Blue Metallic (30)
Dark Adriatic Blue Metallic (39)
Ruby Red Metallic (72)
Dark Cherry Metallic (77)
Black (41)

Interior

Blue, Gray, Lt. Green, Taupe, Dark Ruby Red
Taupe, Dark Ruby Red
Blue, Gray, Dark Ruby Red
Lt. Green
Gray, Lt. Green, Taupe
Gray, Taupe
Blue
Blue, Gray, Taupe
Blue, Gray, Taupe
Gray, Taupe, Dark Ruby Red
Gray, Taupe, Dark Ruby Red
Gray, Taupe, Dark Ruby Red
Gray, Lt. Green, Taupe, Dark Ruby Red

ROADMASTER

Exterior

Bright White (16)
Light Driftwood Metallic (33)
Platinum Gray Metallic* (03)
Dark Jadestone Metallic (18)
Light Adriatic Blue Metallic (36)
Adriatic Blue Metallic (30)
Ruby Red Metallic* (72)
Dark Cherry Metallic (77)
Black (41)

Interior

Blue, Gray* Beige, Dark Ruby Red
Blue
Gray, Dark Ruby Red
Gray* Beige
Blue
Blue, Gray* Beige
Gray, Beige, Dark Ruby Red
Gray* Beige, Dark Ruby Red
Gray* Beige, Dark Ruby Red

*Available on Sedan only.

LE SABRE

Exterior

Bright White (16)
Sandstone Beige Metallic (50)
Platinum Gray Metallic (03)
Medium Autumn Green Metallic (47)
Jamaican Teal Metallic (42)
Light Adriatic Blue Metallic (36)
Adriatic Blue Metallic (30)
Ruby Red Metallic (72)
Dark Cherry Metallic (77)
Black (41)

Interior

Blue, Gray, Taupe, Dark Ruby Red
Taupe, Dark Ruby Red
Blue, Gray, Dark Ruby Red
Gray, Taupe
Gray, Taupe
Blue
Blue, Gray, Taupe
Gray, Taupe, Dark Ruby Red
Gray, Taupe, Dark Ruby Red
Black (41)
Gray, Taupe, Dark Ruby Red

REGAL

Exterior

Bright White (16)
Light Sandrit Metallic* (49)
Platinum Gray Metallic** (03)
Medium Autumn Green Metallic* (47)
Medium Jadestone Metallic (44)
Light Adriatic Blue Metallic** (36)
Adriatic Blue Metallic (30)
Bordeaux Red Metallic (51)
Black (41)

Interior

Blue, Gray, Taupe, Red
Taupe
Gray, Red
Gray, Taupe
Gray, Taupe
Blue, Gray, Taupe
Blue, Gray, Taupe
Gray, Taupe, Red
Gray, Taupe, Red

**Not available on Custom and Gran Sport Coupes, and Gran Sport two-tone Sedan.
**Not available on Gran Sport Coupe and Gran Sport two-tone Sedan.
**Not available on Custom and Gran Sport Coupes.

CENTURY

Exterior

Bright White (16)
Light Sandrit Metallic (49)
Platinum Gray Metallic (03)
Medium Autumn Green Metallic (47)
Dark Jadestone Metallic (18)
Light Adriatic Blue Metallic (36)
Adriatic Blue Metallic (30)
Dark Adriatic Blue Metallic (39)
Gray, Taupe, Dark Ruby Red
Dark Cherry Metallic (77)

Interior

Blue, Gray, Taupe, Dark Ruby Red
Blue, Taupe, Dark Ruby Red
Blue, Gray, Dark Ruby Red
Gray, Taupe
Gray, Taupe
Blue
Blue, Gray, Taupe
Blue, Gray, Taupe
Gray, Taupe, Dark Ruby Red
Gray, Taupe, Dark Ruby Red

SKYLARK

Exterior

Bright White (16)
Light Sandrit Metallic* (49)
Medium Jadestone Metallic* (44)
Caribbean Green Metallic (37)
Jamaican Teal Metallic* (42)
Bright Blue Metallic* (26)
Royal Magenta Metallic (05)
Ruby Red Metallic (72)
Bright Red (81)
Black (41)

Interior

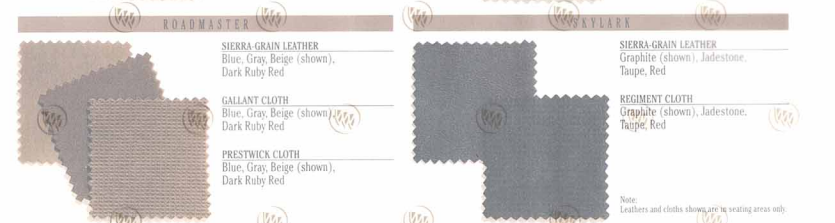
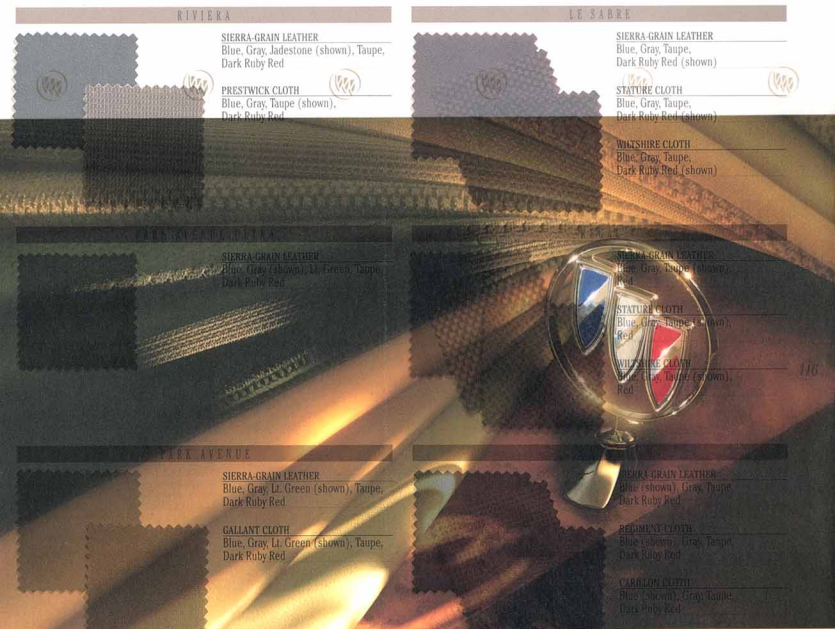
Jadestone, Graphite, Taupe, Red
Graphite, Taupe
Jadestone, Graphite, Taupe
Graphite, Taupe
Jadestone, Graphite, Taupe
Graphite, Taupe
Graphite, Taupe, Red
Graphite, Taupe
Jadestone, Graphite, Taupe, Red

*Not available on Gran Sport.

INTERIOR FABRICS

EXTERIOR COLORS

- (1) Not available on Regal Coupes and Gran Sport two-tone Sedan.
- (2) Not available on Skylark Gran Sport.
- (3) Not available on Roadmaster Wagons.
- (4) Not available on Regal Custom and Gran Sport Coupes.
- (5) Not available on Regal Gran Sport Coupe and Gran Sport two-tone Sedan.



Note:
Leathers and cloths shown are in seating areas only.

<p>BRIGHT WHITE (16) Riviera Park Avenue Ultra Park Avenue Roadmaster LeSabre Regal Century Skylark</p>	<p>BRIGHT WHITE DIAMOND METALLIC (78) Riviera</p>	<p>LIGHT DRIFTWOOD METALLIC (33) Roadmaster</p>	<p>LIGHT SANDRIFT METALLIC (49) Regal⁽¹⁾ Century Skylark⁽²⁾</p>	<p>SANDSTONE BEIGE METALLIC (50) Riviera Park Avenue Ultra Park Avenue LeSabre</p>	<p>PLATINUM GRAY METALLIC (63) Riviera Park Avenue Ultra Park Avenue Roadmaster⁽³⁾ LeSabre Regal⁽⁴⁾ Century</p>	<p>LIGHT AUTUMN GREEN METALLIC (58) Park Avenue</p>	<p>MEDIUM AUTUMN GREEN METALLIC (47) Riviera Park Avenue Ultra Park Avenue LeSabre Regal⁽⁴⁾ Century</p>	<p>LIGHT JADESTONE METALLIC (34) Riviera</p>	<p>MEDIUM JADESTONE METALLIC (44) Regal Skylark⁽²⁾</p>	<p>DARK JADESTONE METALLIC (18) Roadmaster Century</p>	<p>CARIBBEAN GREEN METALLIC (37) Skylark</p>
--	--	--	--	---	--	--	---	---	--	---	---

<p>JAMAICAN TEAL METALLIC (42) LeSabre Skylark⁽²⁾</p>	<p>MAJESTIC TEAL METALLIC (43) Riviera Park Avenue Ultra Park Avenue</p>	<p>BRIGHT BLUE METALLIC (26) Skylark⁽²⁾</p>	<p>LIGHT ADRIATIC BLUE METALLIC (36) Riviera Park Avenue Roadmaster LeSabre Regal⁽⁴⁾ Century</p>	<p>ADRIATIC BLUE METALLIC (30) Riviera Park Avenue Ultra Park Avenue Roadmaster LeSabre Regal Century</p>	<p>DARK ADRIATIC BLUE METALLIC (39) Park Avenue Ultra Park Avenue Century</p>	<p>ROYAL MAGENTA METALLIC (65) Skylark</p>	<p>RUBY RED METALLIC (72) Riviera Park Avenue Ultra Park Avenue Roadmaster⁽³⁾ LeSabre Century Skylark</p>	<p>BRIGHT RED (81) Skylark</p>	<p>BORDEAUX RED METALLIC (51) Regal</p>	<p>DARK CHERRY METALLIC (27) Riviera Park Avenue Ultra Park Avenue Roadmaster LeSabre Century</p>	<p>BLACK (41) Riviera Park Avenue Ultra Park Avenue Roadmaster LeSabre Regal Skylark</p>
---	---	---	--	--	--	---	---	---	--	--	---



© 1996 USOC. 1995

Official Sponsor of the
1996 U.S. Olympic Team



BUICK®

The New Symbol For Quality
In America.