

# MITSUBISHI STARION



# INTRODUCING THE SPORTSCAR BUILT AROUND AN 8 OUNCE PIECE OF METAL.



## MITSUBISHI BRINGS THE TURBO AGE DOWN TO EARTH.

It was only last year that the new Mitsubishi Starion Turbo raced onto the American automotive scene, raising the curtain on a whole new era in sportscar performance.

Suddenly there was a turbo sportscar with much more than just a turbocharger. The Starion Turbo was specifically designed, engineered and built

around its revolutionary Mitsubishi turbocharging system.

At the heart of this system spins an 8-ounce turbine. One of the

world's smallest and most responsive.

And each and every Starion performance feature works in tandem with this advanced piece of metal.

From the 2.6-liter, 145 horsepower, electronically fuel-injected engine itself.

To the turbo-tuned, gas-filled shocks. Right down to the contoured turbo seats.

The entire car is "turbo-tuned." Sportscar enthusiasts and auto-

motive journalists were delighted: "The car fully lives up to its technical promise," said *Motor Trend* magazine, September 1982. "Starion may be the new kid on the block, but ain't nobody gonna push it around."

You can see it in the Starion styling, fit and finish. And you can feel it the moment you step on the accelerator. Sheer power.

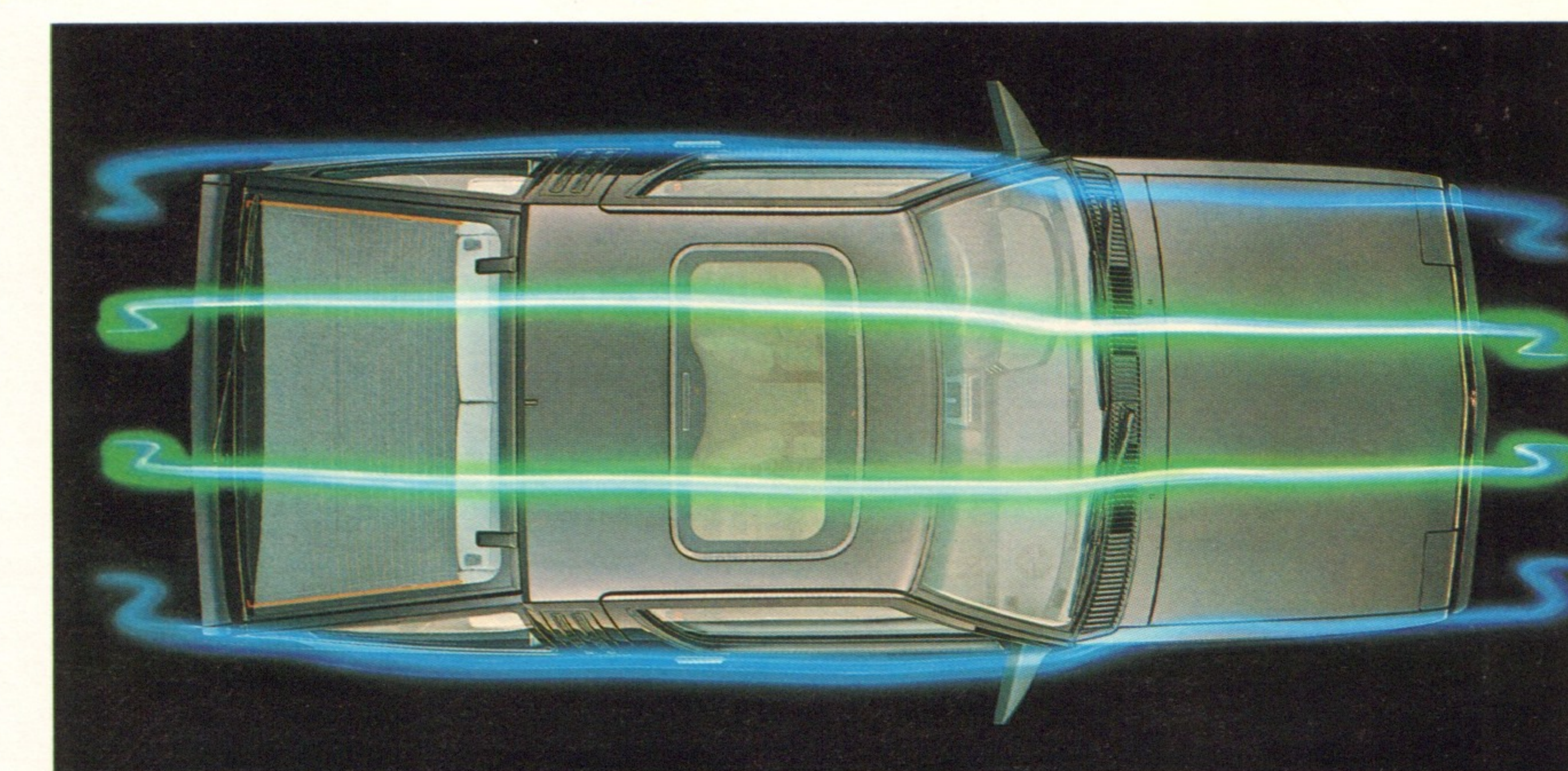
## AT MITSUBISHI MOTORS, INNOVATION IS AN OLD STORY.

Mitsubishi is a world leader in turbo technology, having built its first turbo in 1937. Naturally, after 47 years Mitsubishi has learned a few things about turbocharging.

And all three 1984 Starion Turbo models are perfect representations of that knowledge—flagships of a revolutionary new breed of automobile. Sportscars designed and built to offer high performance and sophisticated styling at realistic prices.

The Starion Turbo sportscars boast a wind-slicing drag coefficient of only 0.35, made possible by an extremely aerodynamic shape, with a slippery as well as stylish "tumble-down" nose design,

smooth hood, flush-fitted body and reverse-slant front air dam to help take you from 0 to 50 in 6.4 seconds.



An impressive drag coefficient of only 0.35 yields excellent aerodynamics.

And through a quarter mile in a blazing 16.4 seconds.\*

\*Car and Driver magazine, test results, August 1983.



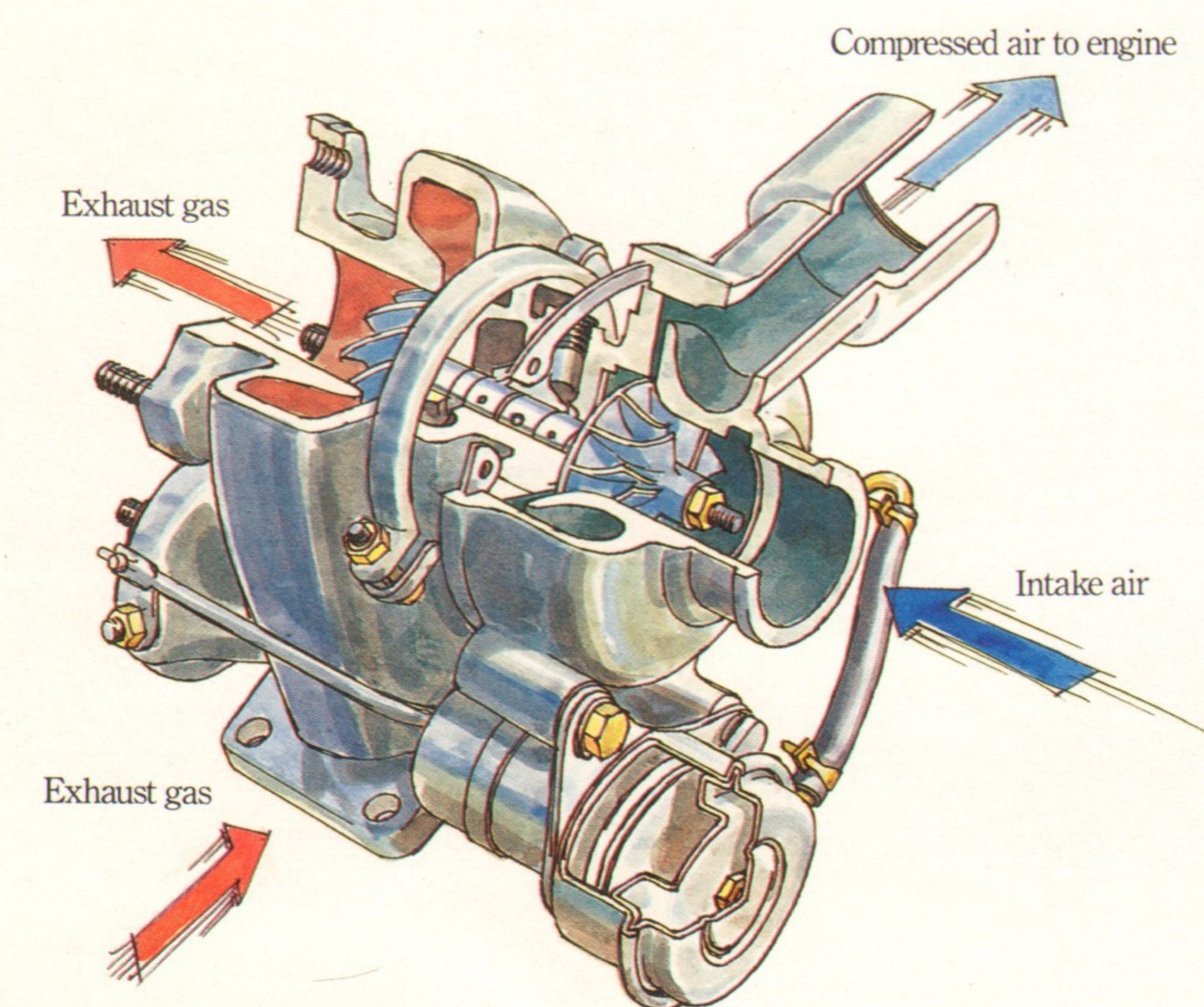
# NOT JUST TURBOS. MITSUBISHI TURBOTRONICS.™

The Mitsubishi philosophy of automaking demands that each element in the car's system be as strong and perfectly matched to the others as possible.

This is no more dramatically demonstrated than in our approach to the technology of turbocharging.

## ABOUT TURBOTRONICS.™

It's the reason why we custom design and build our own turbos for our own engines, and engines for



our turbos. The result is a synergy that gives you plenty of outstanding on-demand power.

We call this magic Turbotronics.™ And Starion Turbo is a perfect representation of how this totally synergistic philosophy translates into an exciting reality.

Simply put, turbocharging works

The Mitsubishi turbine impeller is one of the world's smallest and most responsive, weighing only 8 ounces.



by diverting exhaust gases, which normally escape out the tailpipe, back into the engine. This "free" energy spins a turbine wheel at a speed of over 100,000 rpm. Which, in turn, rapidly spins a compressor wheel.

Here, a virtual whirlwind of air and fuel is compressed and forced into the engine's combustion chamber, filling the engine with the extra power for on-demand use.

At this point, Mitsubishi turbos resemble most others.

It is here we also part company.

## YOU COMMAND POWER.

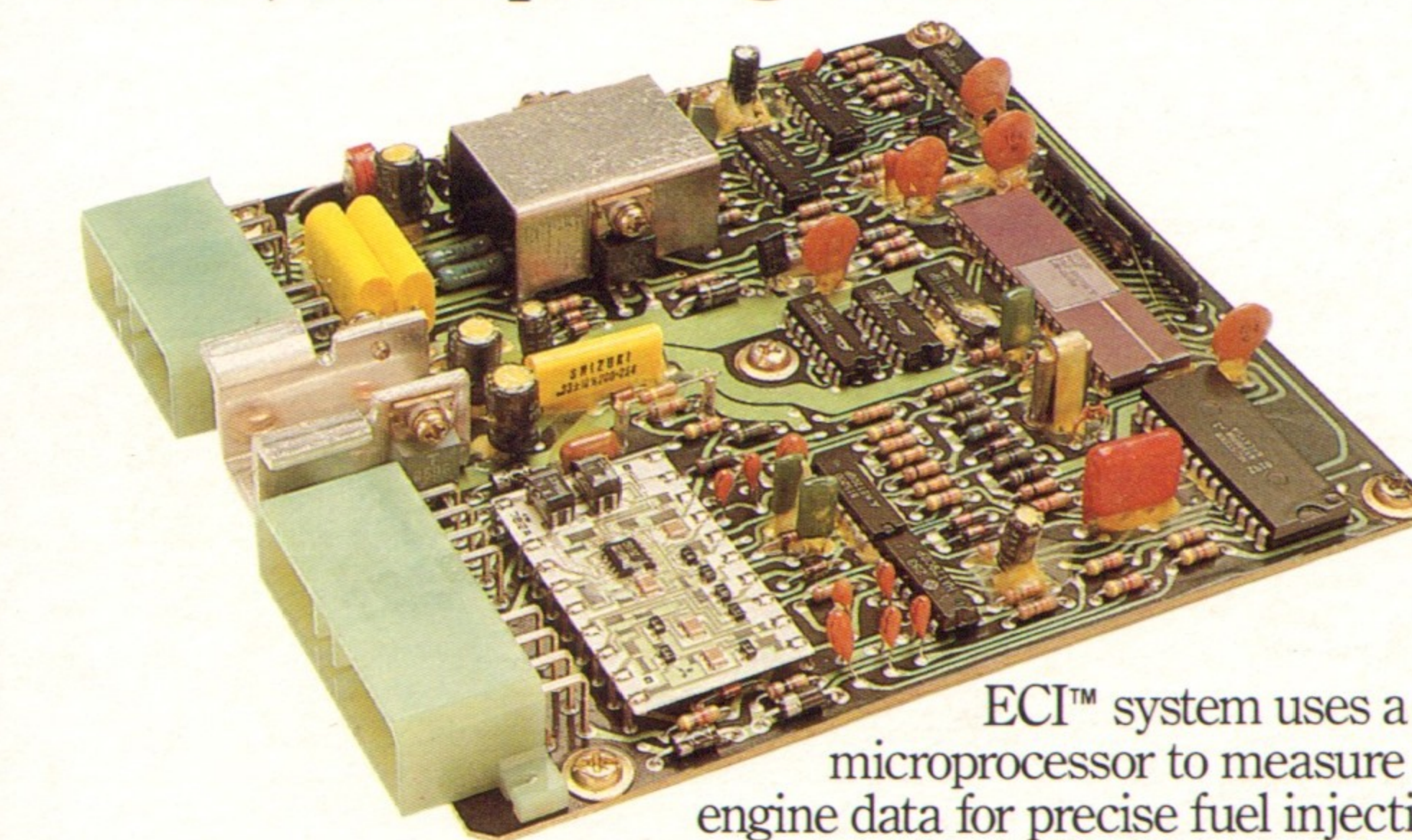
The Mitsubishi turbocharged 2.6-liter electronically-controlled fuel-injected MCA Jet™ engine is under the hood of all three 1984 Starion Turbo sportscars, awaiting your command to unleash 145 horsepower at 5,000 rpm, and 185 lb.-ft. of torque at 2,500 rpm.

The turbocharger is built in. Not just bolted on. It's a graphic example of the Mitsubishi philosophy of synergy in action.

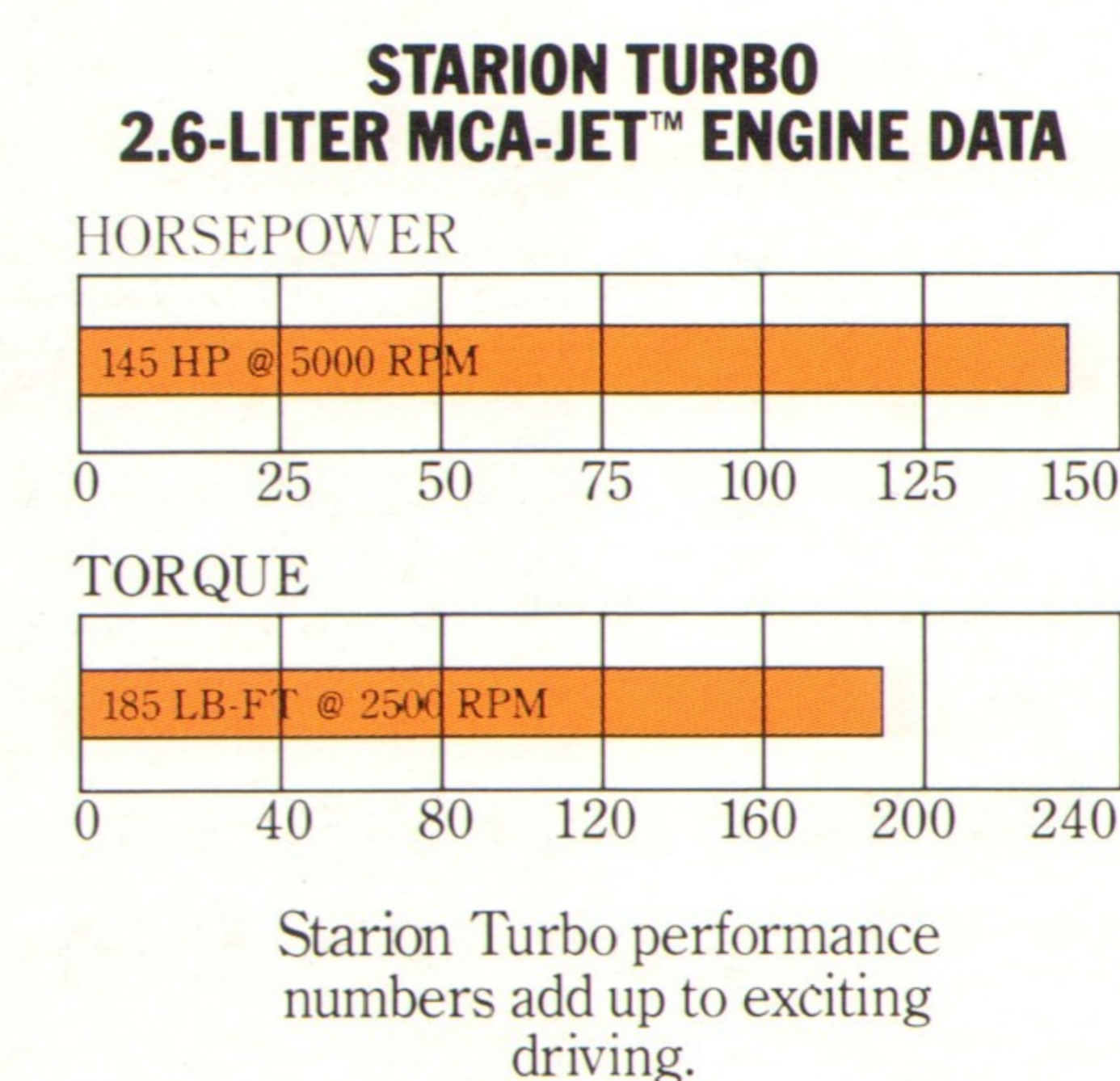
## LESS WEIGHT MAKES A LOT OF DIFFERENCE.

Mitsubishi turbochargers are characterized by their low mass and light weight. The actual turbine shaft and wheels weigh only 8 ounces, and can fit in the palm of your hand. Consequently, they respond faster than larger, heavier ones.

The quicker the added power can be pumped in, the quicker the engine responds. Hence, the beauty of our small, fast-spinning turbine is the



ECI™ system uses a microprocessor to measure engine data for precise fuel injection.



virtual elimination of what is commonly known as "turbo lag."

The Mitsubishi turbo system delivers quick response from engine speeds as low as 2,000 rpm right up to higher-speed passing situations.

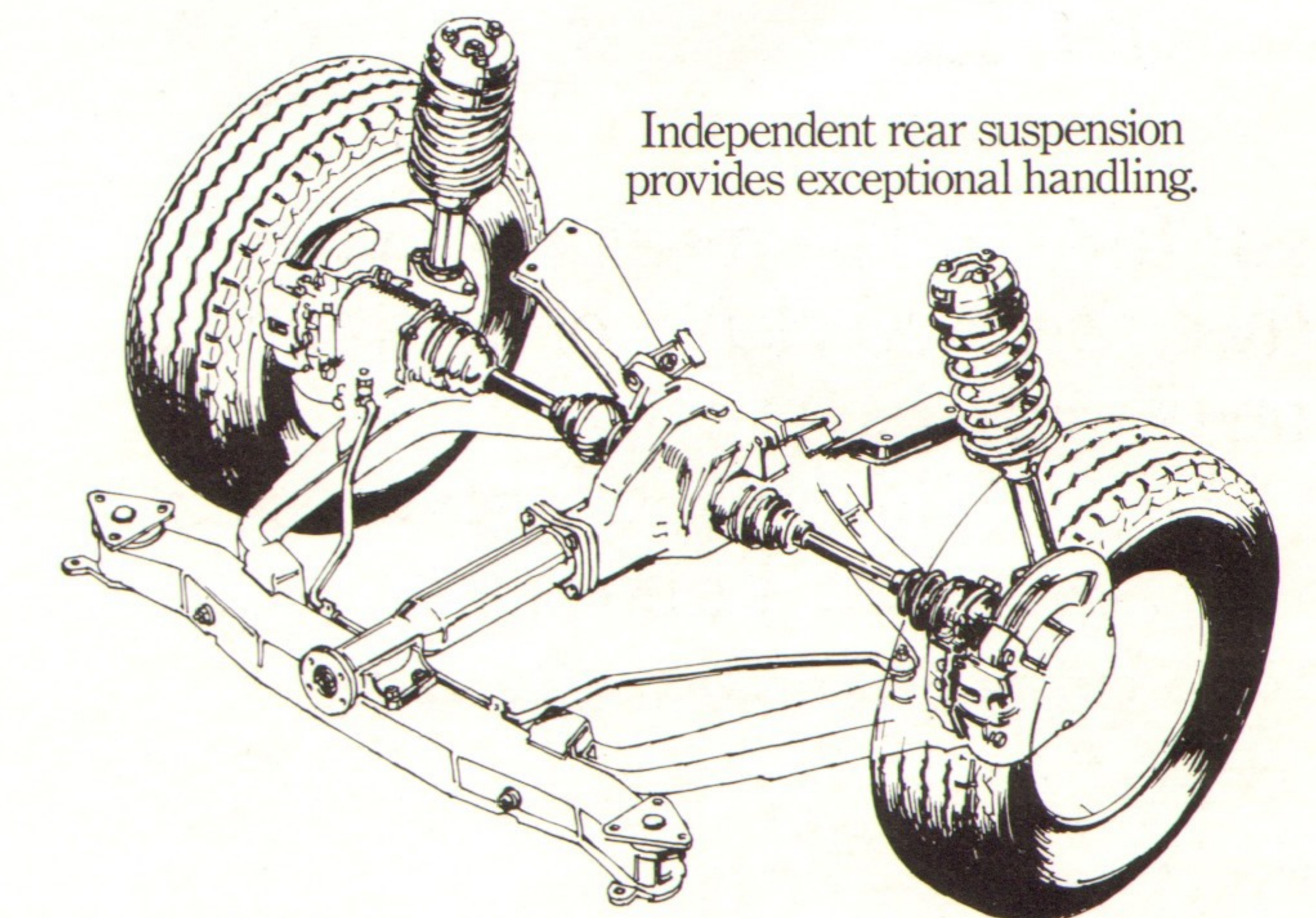
But the stellar performance you'll discover behind the wheel of the Starion demands more than just a great turbo.

## FUEL INJECTION WITH THE BRAINS TO USE ITS POWER.

Obtaining peak performance from a turbocharged engine requires a system that maintains an optimum air/fuel ratio.

Which brings us to another key Mitsubishi feature: the Electronically Controlled Fuel Injection™ system.

ECI™ uses a microprocessor to measure air temperature, throttle



position, speed, battery voltage and airflow rate.

All in milliseconds.

ECI™ knows precisely how much fuel should be fed into the engine at precisely the right moment.

And the job gets done.

So you simultaneously get peak performance and fuel efficiency.\*

Each and every element of the 1984 Starion Turbo engineering is an expression of total integration between refined automotive design, style and advanced turbo technology.

All to quickly take you where you've never been before.™

\*See EPA mileage statement on specifications page.

# STARION ES. A QUICK TRIP TO THE OUTER LIMITS.

The new Starion ES is the culmination of a quest for excellence that started in 1917 with the Mitsubishi Model A, Japan's first series-produced automobile.

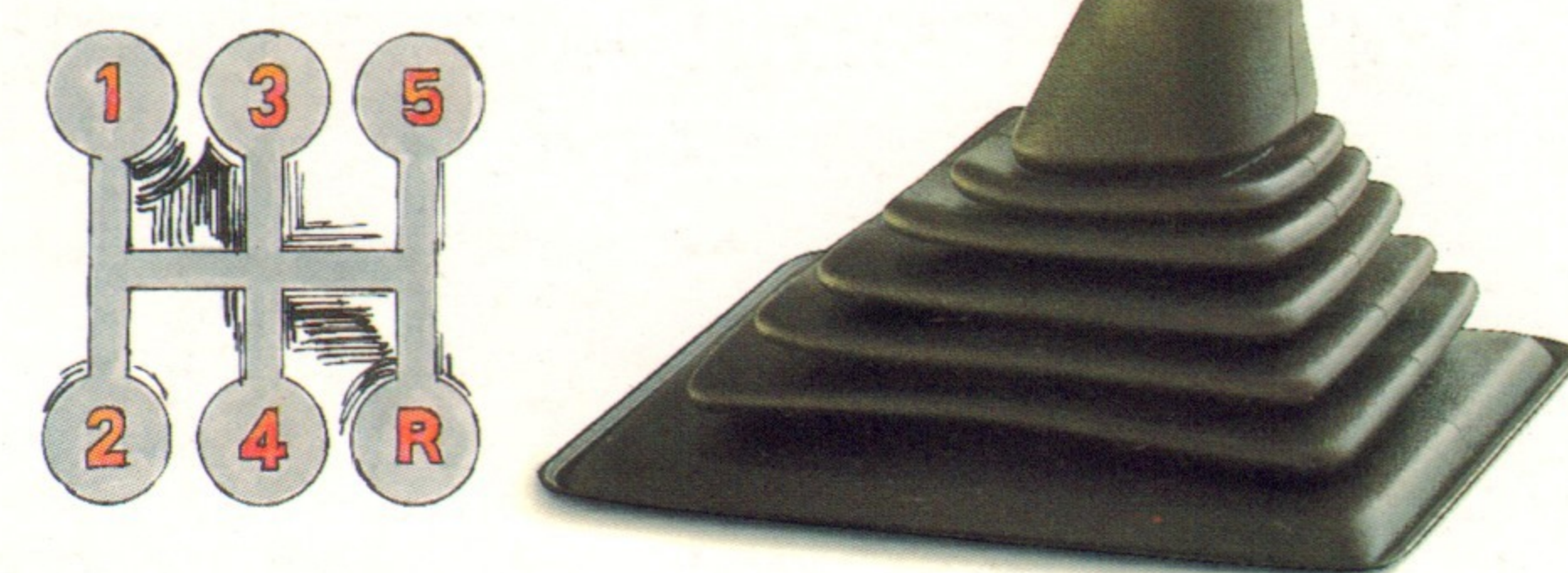
The ES stands for EuroSport, a machine bred to own both the open road and winding mountain byways.

Its handsome styling and technological genius push form and function to new limits.

## FOR SERIOUS DRIVERS ONLY.

Starion ES gives you a performance package that includes a limited-slip differential for road-gripping

5-speed manual overdrive transmission features a pistol-grip shift knob.



traction, and an electronic Rear Brake Lock-Up Control System™ to help reduce the possibility of rear wheel lock-up in those occasional hard braking situations.

## STRAIGHTEN OUT THE CURVES.

Starion ES also takes to cornering with the greatest of ease. Thanks to turbo-tuned independent suspension with MacPherson struts up front, and independent strut rear suspension with an 18mm. stabilizer bar.

Four-wheel, power-assisted disc brakes are vented for excellent fade-resistant braking action.

Mitsubishi-patented Dual Engine Stabilizers™ are designed to help reduce engine noise and vibration.

Its smooth-shifting 5-speed gear-box features a pistol-grip shift knob for fast action.

Welcome to an inner world of competition instrumentation and high-style comfort to match Starion ES looks and performance.

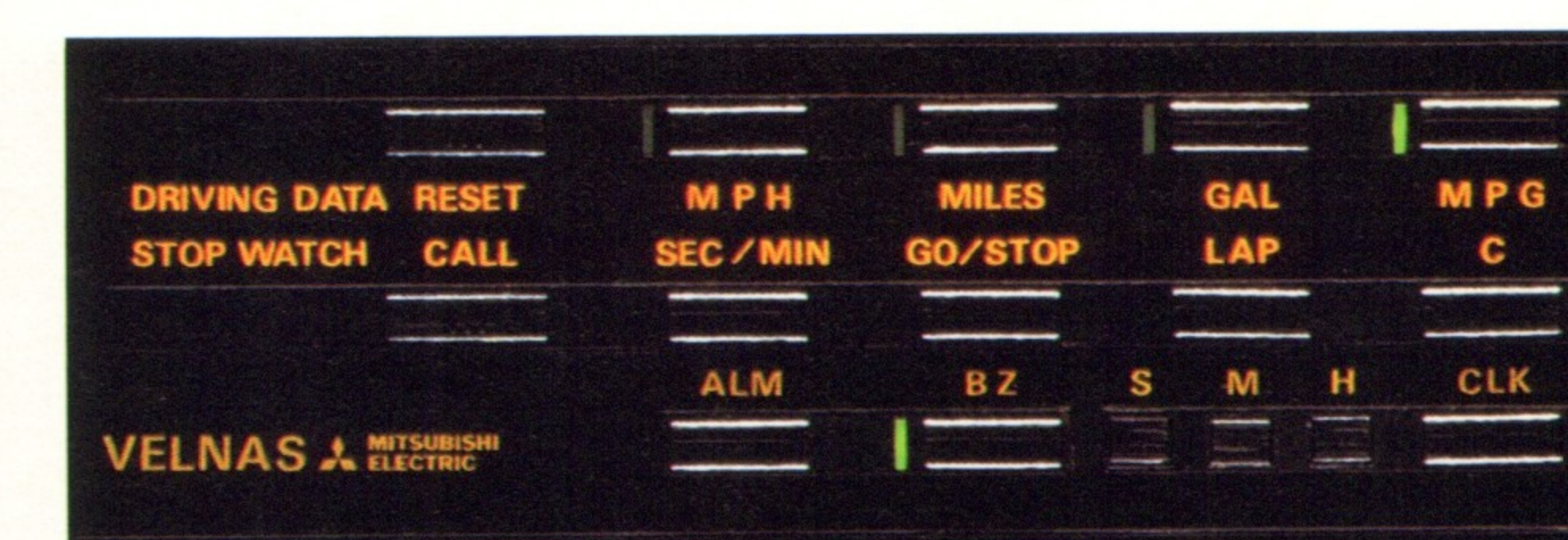
You and your passengers ride in



an intelligently planned interior environment, a cockpit designed to support your need for fast-paced decision making while shifting, steering and braking.

## MONITOR YOUR VITAL FUNCTIONS.

Because Starion ES was built for the serious driver, its cockpit is a veritable command center.



A VELNAS trip computer helps you track several driving functions.

Ideally-situated analog instrumentation keeps you apprised of turbo boost, speed, rpm's, fuel level, temperature, oil pressure and amperage. Every dial, gauge and meter is calibrated for fast tracking. And illuminated for quick and easy evaluation at night, too.

A warning light cluster monitors important driving functions. It also notifies you rapidly if a door or hatch is ajar. It includes a low-fuel warning light and windshield-washer fluid level indicator.

For your convenience, variable-assist power steering, cruise control, power windows and power side mirrors with console-mounted controls come standard. So does a handy resettable tripmeter, electric rear window defogger, rear window wiper/washer and remote hatch and locking fuel lid releases.

## YOU'RE THE NAVIGATOR.

Starion ES comes with a VELNAS trip computer for fun as well as function, providing an instant readout of average speed, driving distance, fuel consumption and fuel economy. It even includes stop-watch and digital quartz alarm clock functions.

Intermittent 2-speed variable wipers can be set at intervals from 3 to 12 seconds. Concealed seatbelts retract inside the door, a feature *Car and Driver* magazine, January 1983, voted one of last year's best automotive innovations. A stylish rear window tint band protects passengers from glare. And double pivot hinges swing the doors open extra-wide for easy entry.

## COMFORT THAT ADJUSTS TO YOU.

Inside Starion ES, you'll be in functional comfort, thanks to six-way adjustable Turbo Sport seats with side, thigh and lumbar supports.

And the contoured rear seats each fold down for easy access to the hatch storage area, as well as to hold oversized objects.

For added comfort, air conditioning with automatic temperature control and dual bi-level heating and ventilation are standard features. As is a padded 4-spoke leather-wrapped steering wheel with height-adjustable steering column. Along with door-to-door thick-cut pile carpeting, and a center console with comfortable armrest that flips open for handy additional storage.

For sheer entertainment, there's a 6-speaker AM/FM stereo radio with cassette and Dolby.®

Inside and out, Starion ES will take you beyond the ordinary.

In a hurry.



# STARION LE. THE LUXURY OF POWER.



full tinted glass, while those riding in the back seat escape glare thanks to a rear window tint band.

## EQUIPPED TO MOVE.

Starion LE comes with a smooth-shifting 5-speed manual overdrive transmission. An optional 4-speed automatic transmission doesn't sacrifice on fuel efficiency. In fact, it gives you just about the same mileage around town as our 5-speed.\*

This sportscar not only offers the luxury of power and comfort as your means of personal expression, but it also looks the part.

Starion LE sports a front air dam for slippery aerodynamics.

Raised white-outline steel-belted radial tires, with 14-inch cast alloy wheels, provide stylish handling.



Power door locks are a handy convenience.

Halogen high beam headlights brighten the night, and fully retract by day, contributing to advanced Starion aerodynamics as well as to its very handsome good looks.

Halogen fog/passing lights sit flush with the front bumper, to light your way in inclement weather.

Electronic remote control dual sport mirrors contribute to this sportscar's sleek looks.

A choice of stylish two-tone paint schemes heighten the image of luxury. There are even high-style turbo graphics to tell the world just how serious you are when it comes to sportscar performance.

The 1984 Mitsubishi Starion LE. Luxury never looked and felt quite so good.

Nor moved so fast.

\*See EPA statement on specification page.

Here is the luxury of exciting on-demand turbo power, coupled with a seemingly endless list of luxurious standard features.

The Starion Luxury Edition is a turbo sportscar designed to stand out for its performance, as well as its sheer elegance.

## EVEN PARKING BECOMES LUXURIOUSLY SIMPLE.

Variable-assist power steering provides maximum effect when you're stationary or moving slowly, and minimal effect at highway speeds. For

easy parking and great road feel.

Easy and accurate steering is fur-



Variable-assist power steering makes for easy parking and great road feel.

ther enhanced by MacPherson strut suspension up front, with high caster, low trail and near-zero camber angle.

And cruise control practically drives Starion LE for you, by automatically maintaining your desired speed at 25 mph and over, without your touching the accelerator.

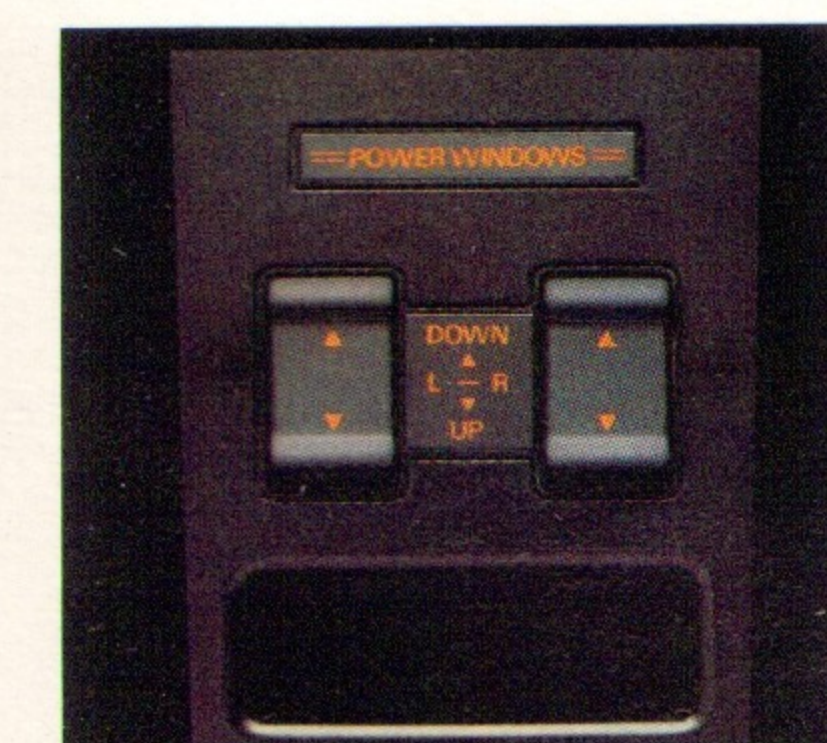
Besides helping to reduce fatigue during long trips, it also helps reduce the consumption of fuel.\*

## POWER AT YOUR FINGERTIPS.

Driver and front passenger windows move up and down with the

push of a button at the console.

Even the Starion LE radio antenna and door locks are power operated.

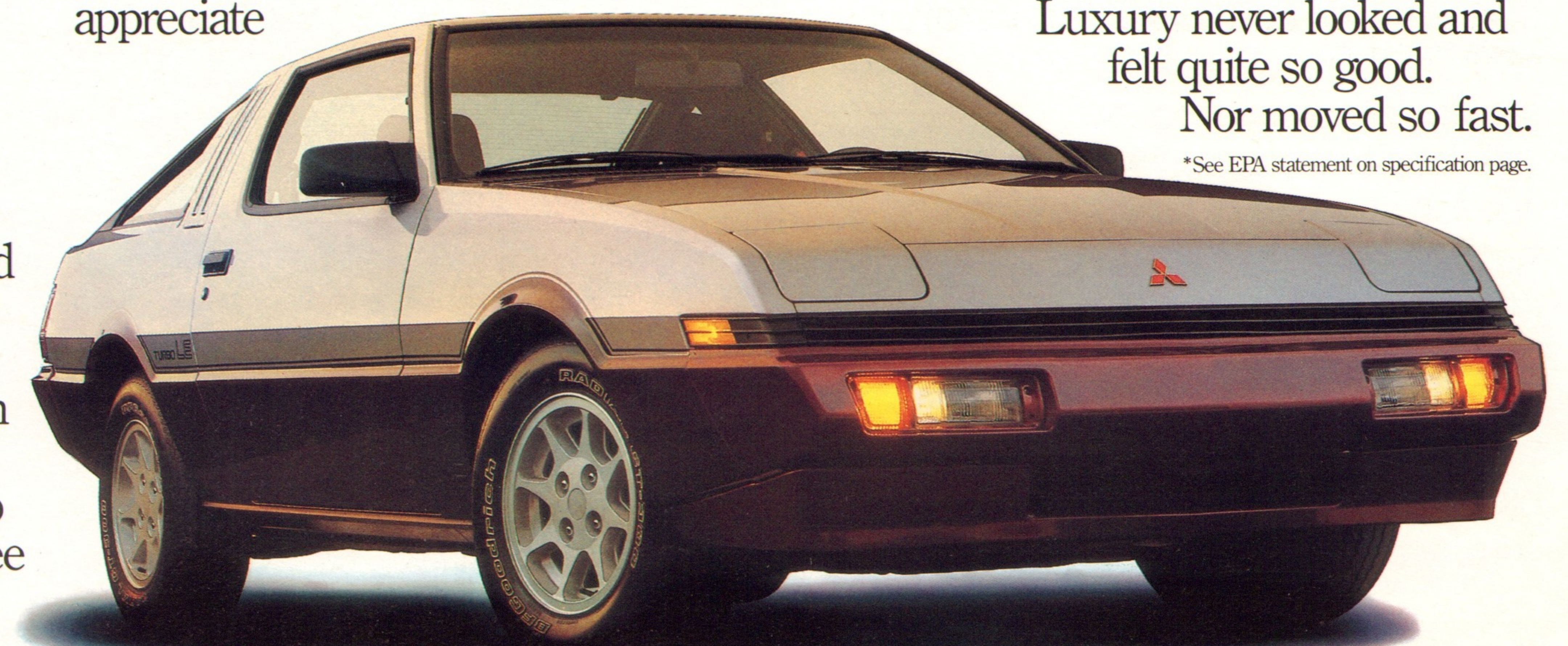


Windows are power operated.

Two-speed wipers with intermittent action help keep the windshield clear during down-pour and gentle rain, and can be set at intervals from 3 to 12 seconds for drizzle and mist.

A rear window wiper/washer also comes standard, so you can easily see

where you've been as well as where you're going. On sunny days, you'll appreciate



# STARION LE. EVEN THE INTERIOR GOES A STEP BEYOND.

Experience remarkable turbo sportscar performance from the best seats in the house.

Richly upholstered 6-way Turbo Sport seats cushion you in solid and stylish comfort, while you put Starion LE through its paces.

They're designed to provide fully-adjustable lumbar, back, thigh, side and head support.



Specially engineered six-way Turbo Sport seats adjust to your contour.

And you can heighten the richness of the Starion LE's already elegant interior with optional supple leather upholstery.

## YOU CONTROL THE ENVIRONMENT.

Automatic temperature-control air conditioning constantly maintains the selected air temperature.

Just slide the control to set it at the temperature you like. There's even an economy mode for reducing compressor activity, to take the load off



Automatic temperature control air conditioning and dual bi-level heating/ventilation allow you total environmental control.

the engine when necessary.

It works in tandem with the Mitsubishi dual bi-level heating and ventilation system, to create your choice of interior environments. Ventilating, heating, air conditioning, defogging, dehumidifying—or simultaneously warming your feet while blowing cool air upward for real comfort whatever the weather.



You can also choose to circulate inside or outside air, at any of five different fan speeds.

And comfort is also extended to those riding in back, thanks to the Starion LE's ergonomically designed interior. Contoured wrap-around rear seats furnish generous comfort.

Even the rear window defogger adapts to your driving environment. It functions on an automatically timed 10-minute cycle.

## BRILLIANT INSTRUMENTATION.

Your eyes are treated to a display of equally pleasing luxury by Starion LE's digital instrumentation.

This high-tech electronic combination gauge comprises a digital speedometer with fluorescent display, and a tachometer and turbo boost meter with bar graphs formed by light emitting diodes.

You're kept apprised of other important driving data by an ammeter, washer fluid level warning light and low-fuel warning light.

As well as a door-ajar warning lamp, brake system warning lamp, oil pressure gauge and coolant temperature indicator.

There are also turn signal indicator lamps, a seatbelt warning light, high-beam indicator lamp, fuel gauge and hatchback open warning lamp.

## A FEATURE-LENGTH FEATURE LIST.

On sunny days, you and your passengers will certainly benefit from tinted glass, including a dark upper windshield band and rear window tint band that look good, too.

Everyday, thoughtful touches like variable-assist power steering, power-operated front windows, power door

locks and the cruise control will certainly be appreciated. So will passenger assist grips and a detachable rear cargo cover.

There's much more, of course. After all, the LE does stand for Luxury Edition. There are elegantly upholstered split fold-down rear seats for extra storage, a center console with armrest for added comfort, and remote rear hatch and locking fuel lid releases for convenience. Plus a driver-side sunvisor pocket, and passenger-side vanity mirror.

Other finishing touches include

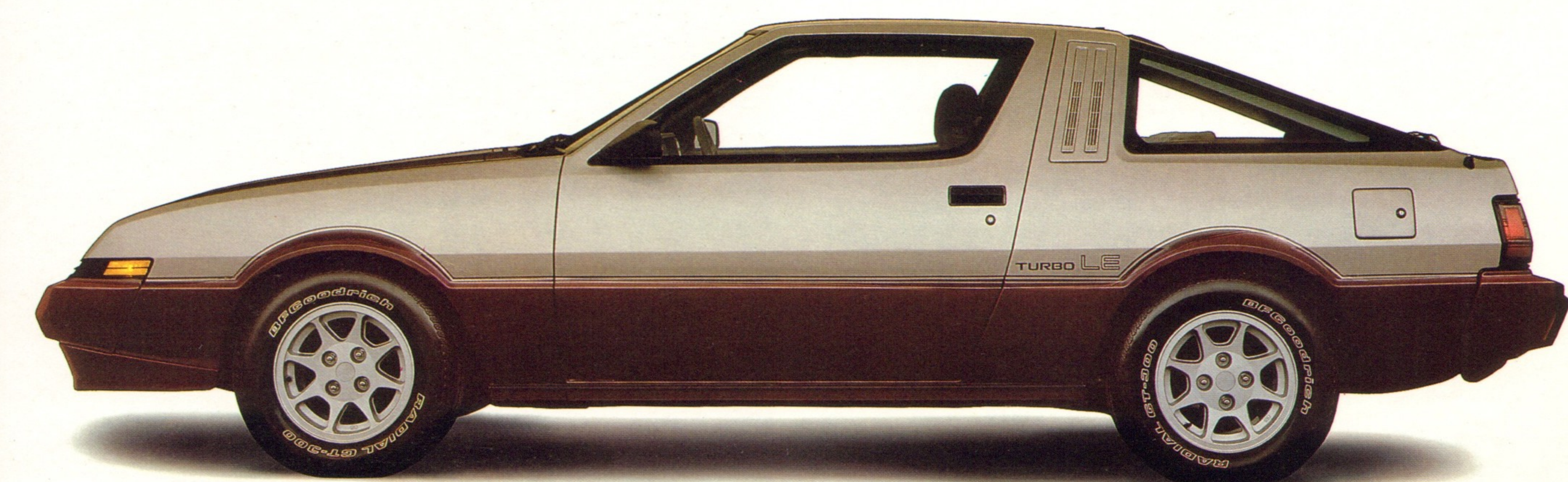


A 6-speaker cassette stereo sound system with graphic equalizer comes standard.

plush cut-pile carpeting for your feet. And a soft-feel pistol-grip shift knob for your hand.

For your ears, there's nothing less than a 6-speaker AM/FM electronically-tuned stereo radio with cassette and Dolby,<sup>®</sup> 5-band graphic equalizer and high-output amplifier.

Considering its unbelievable list of standard features, it's immediately clear the new Starion LE interior goes that extra step to give you a total driving environment that matches its total luxury image.



# STARION LS. THE BEST OF BOTH WORLDS.

And you thought you had to be rich to have power.

Presenting the 1984 Starion Turbo LS. Our most affordable Starion is only extravagant when it comes to outstanding turbo performance. And exceptionally luxurious interior appointments.

#### POWER THAT'S OUT OF THIS WORLD.

Starion LS sports the 2.6-liter electronically-controlled fuel-injected MCA-Jet™ engine, turbo-tuned fully-independent suspension with rear stabilizer bar and 4-wheel power-assisted disc brakes.

A smooth-shifting 5-speed manual overdrive transmission comes standard. As do black P-metric steel-belted radials with 14-inch cast alloy wheels, bumper-integrated halogen fog/passing lights, variable 2-speed wipers with intermittent action, rear window wiper/washer and electric rear window defogger.

Instrumentation is easy-reading analog type, the same as on the



Starion LS reclining front seats provide luxury and comfort.

Starion ES. And like all the Starion models, the LS has an extra-large 19.8-gallon fuel tank.

#### AN INNER WORLD OF DIFFERENCE.

Interior styling includes plush velour upholstery, along with fabric insert door trim panels and carpeted lower-door kick panels. Thick cut-pile carpeting goes door to door.

Even back seat passengers are treated to comfortable contoured seats.



Starion LS also features remote power sport mirrors on both sides, power-operated antenna, power windows, variable-assist power steering and handy cruise control for added comfort on the open road.

Driver and passengers alike will be delighted by surroundings that are luxurious to feel, see and even hear.

There's excellent sound, thanks to



Fold-down rear seats easily expand cargo capacity.

a 6-speaker AM/FM stereo system that includes a cassette deck, Dolby® and electronic tuning.

#### THE LIST GOES ON.

Optional air conditioning plus dual bi-level heating and ventilation control interior air flow. A digital quartz clock is standard. A resettable trip-meter tells you how far you've gone. And remote rear hatch and locking fuel lid releases provide additional security and convenience.

Further amenities include height-adjustable steering column, overhead maplight cluster, rear cargo light, split fold-down rear seats and center console with armrest and storage.

Plus glovebox with lamp, front passenger vanity mirror and door map pockets for convenience.

Tinted glass, including a rear window tint band, is as stylish as it is functional. So are bumpers that are integrated into the body styling.

The final touches on the Starion LS are handsome turbo graphics.

Just to tell everybody you're right at home in the fast lane.

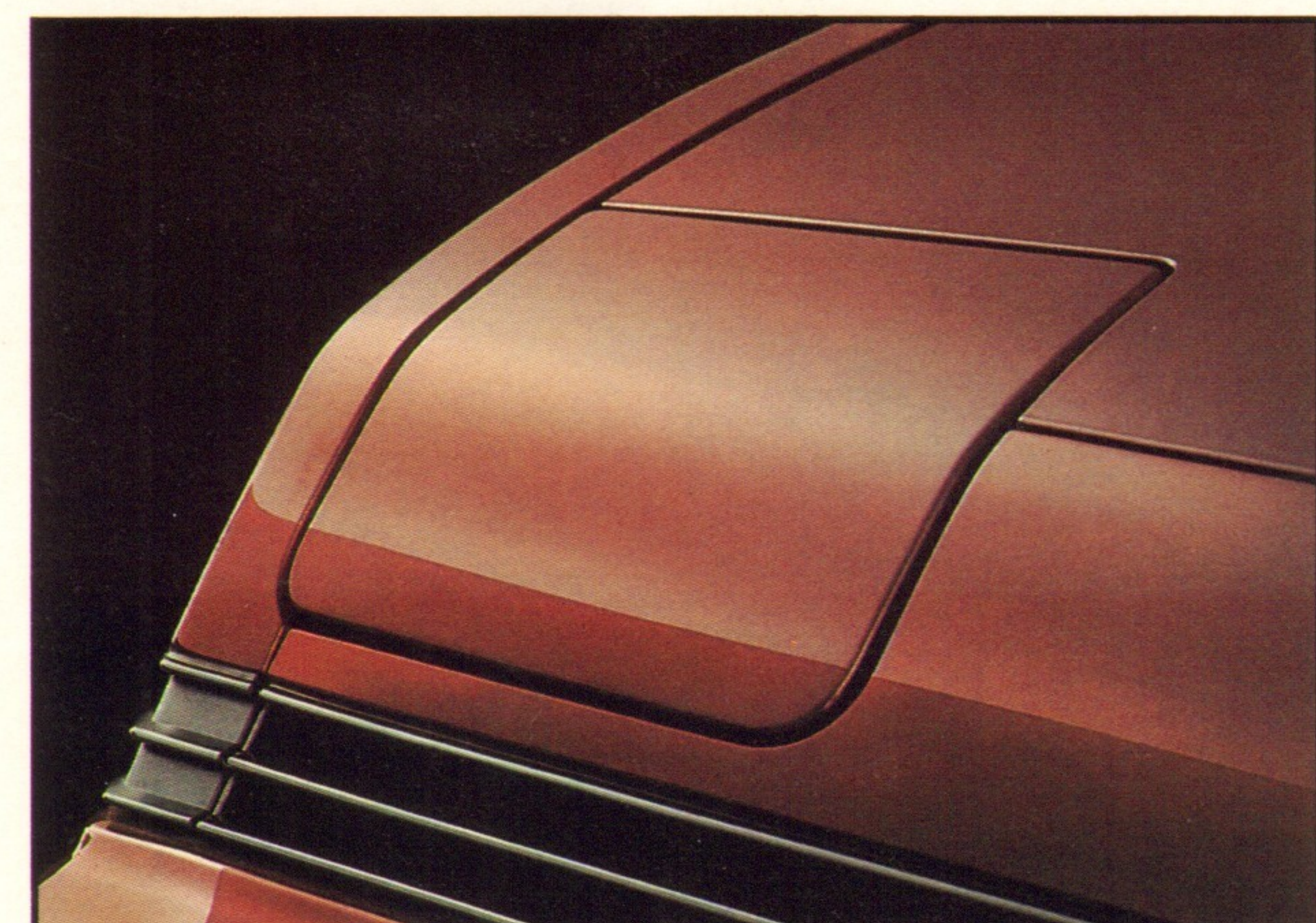
# STARION FEATURES AND OPTIONS: AN EXTRA MEASURE OF BEAUTY AND FUNCTION.



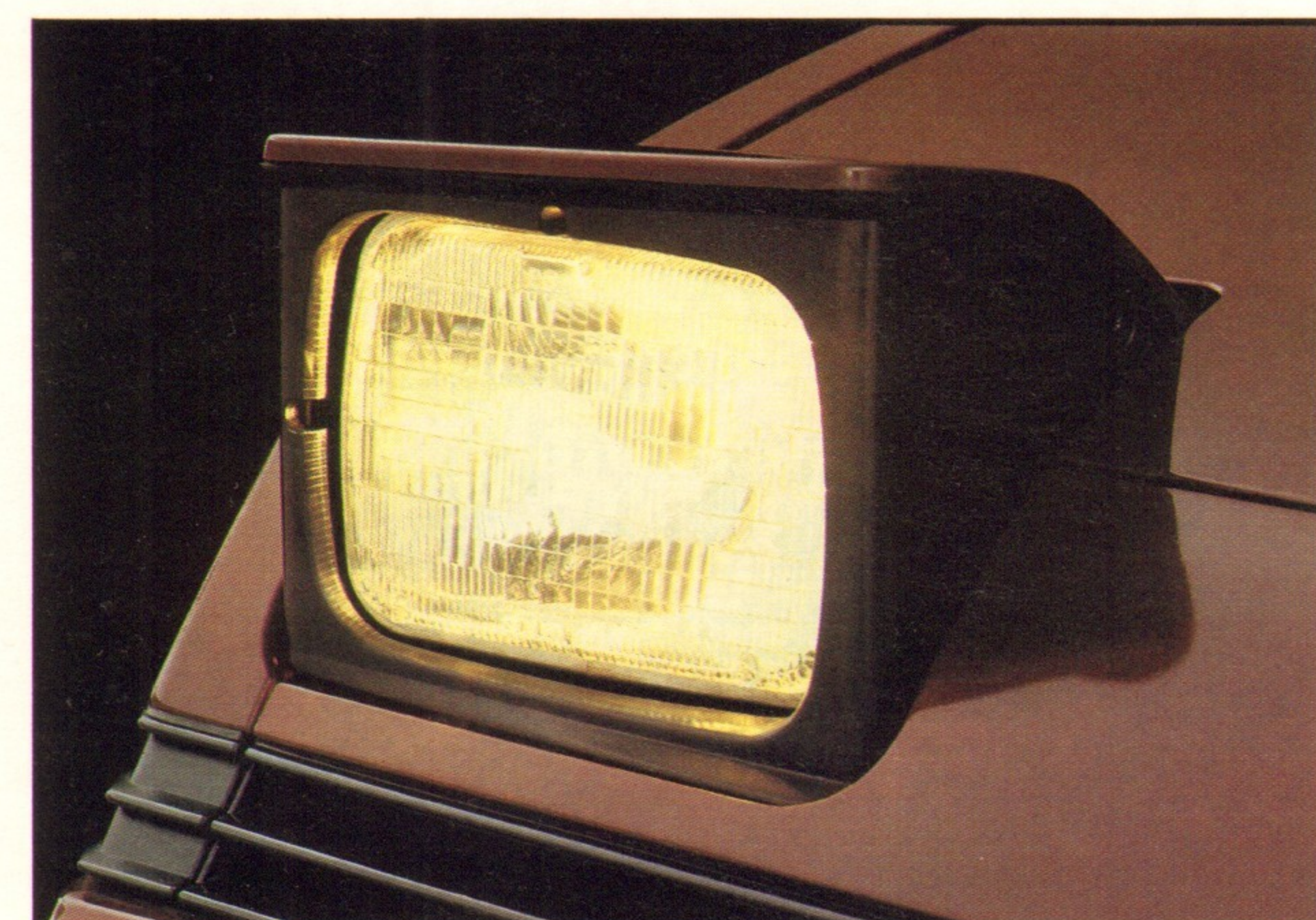
15-inch 8-spoke alloy wheels are standard on Starion ES.



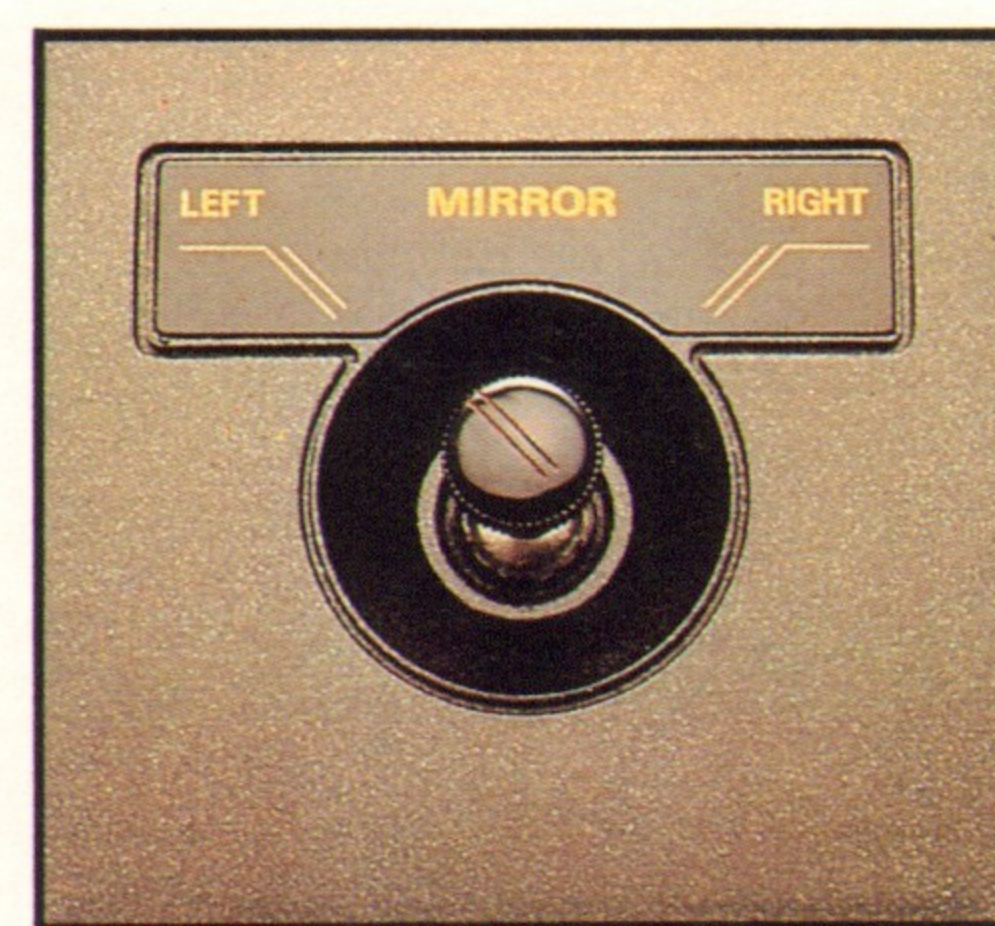
14-inch cast alloy spoke wheels are standard on Starion LE and LS.



All Starion models sport fully-retractable halogen headlights for heightened illumination by night, and improved aerodynamics by day.



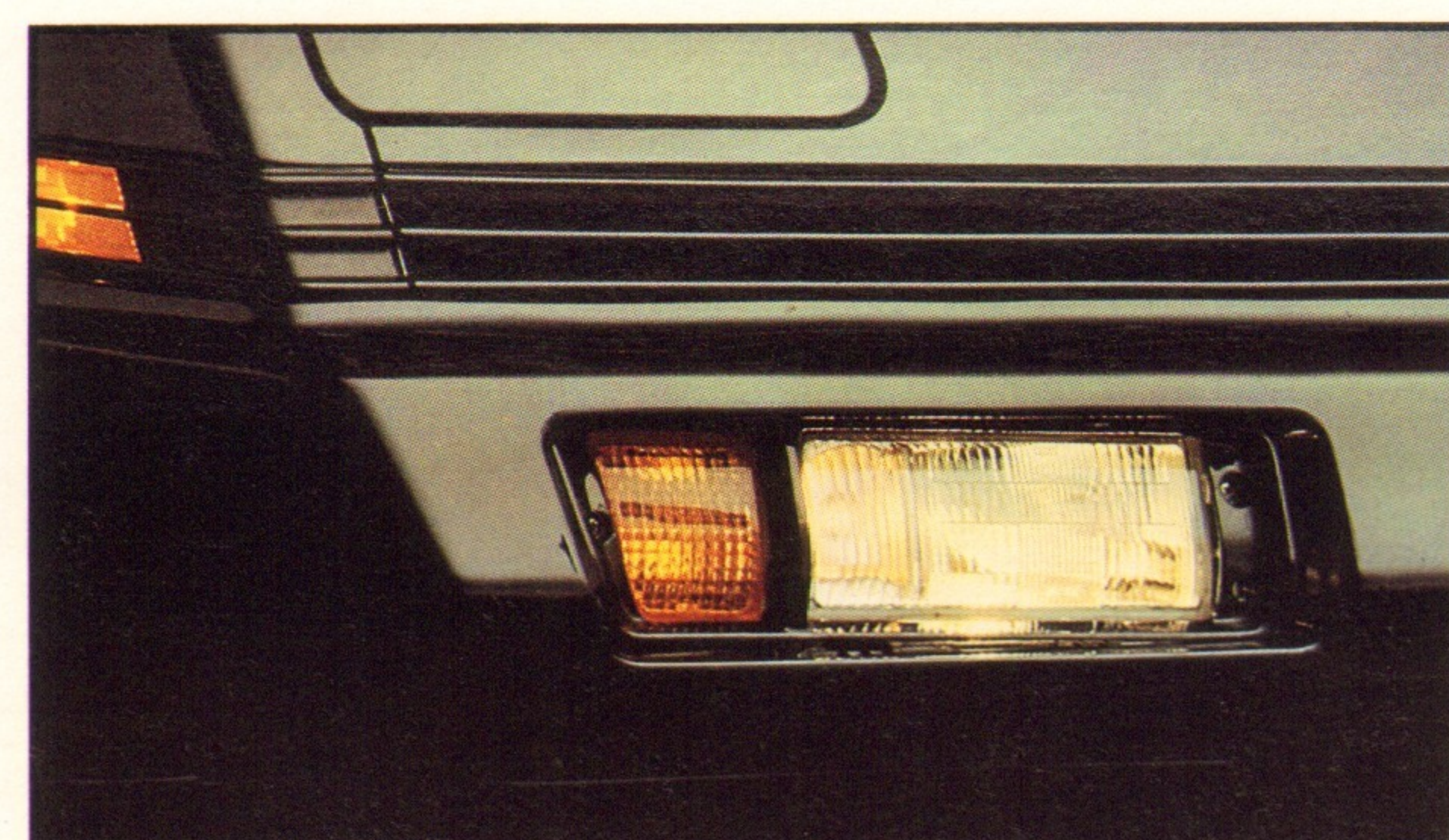
All three Starion models feature a power-operated radio antenna.



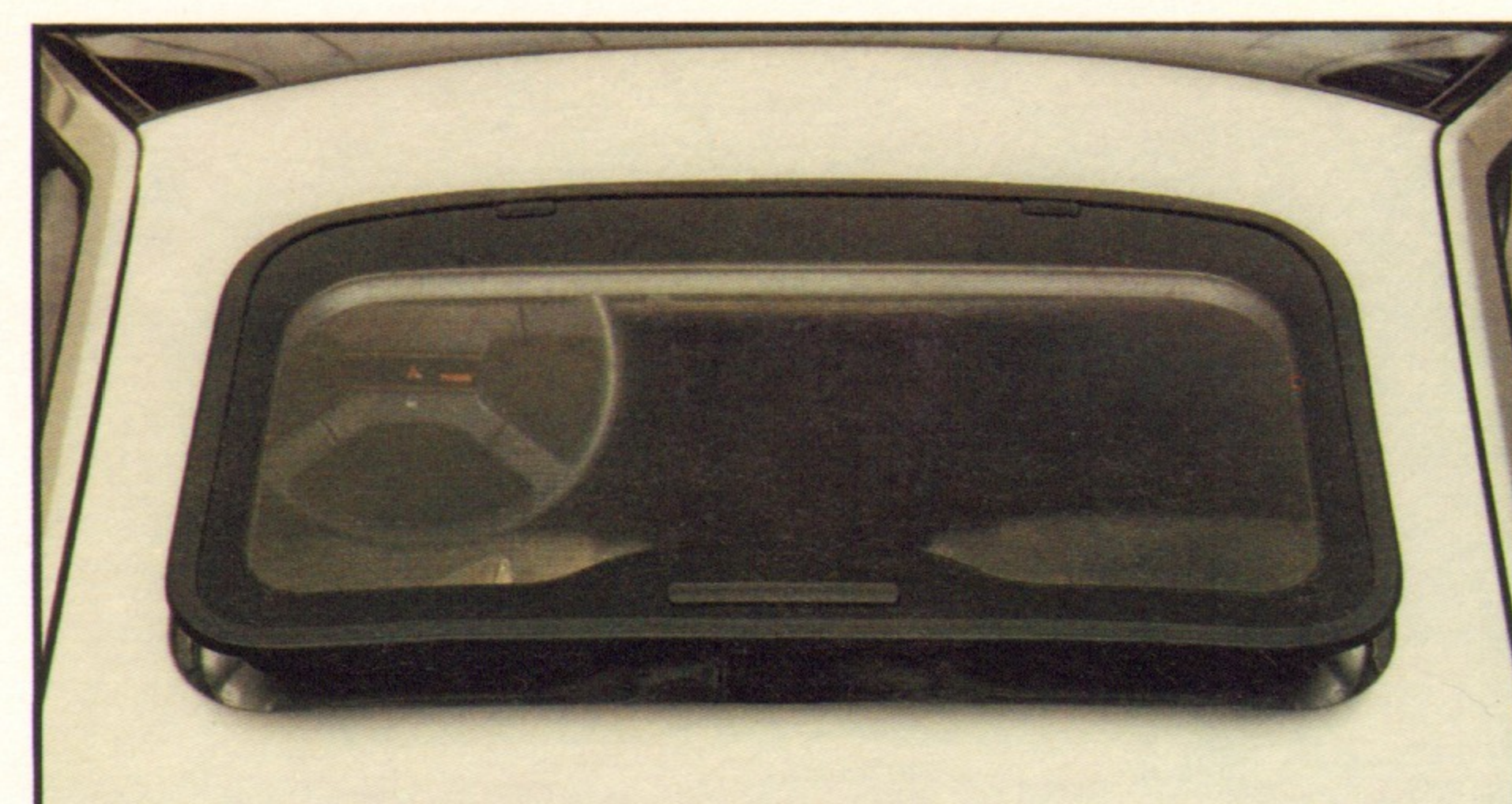
Power extends to outside sport mirrors, electronically adjustable by remote control.



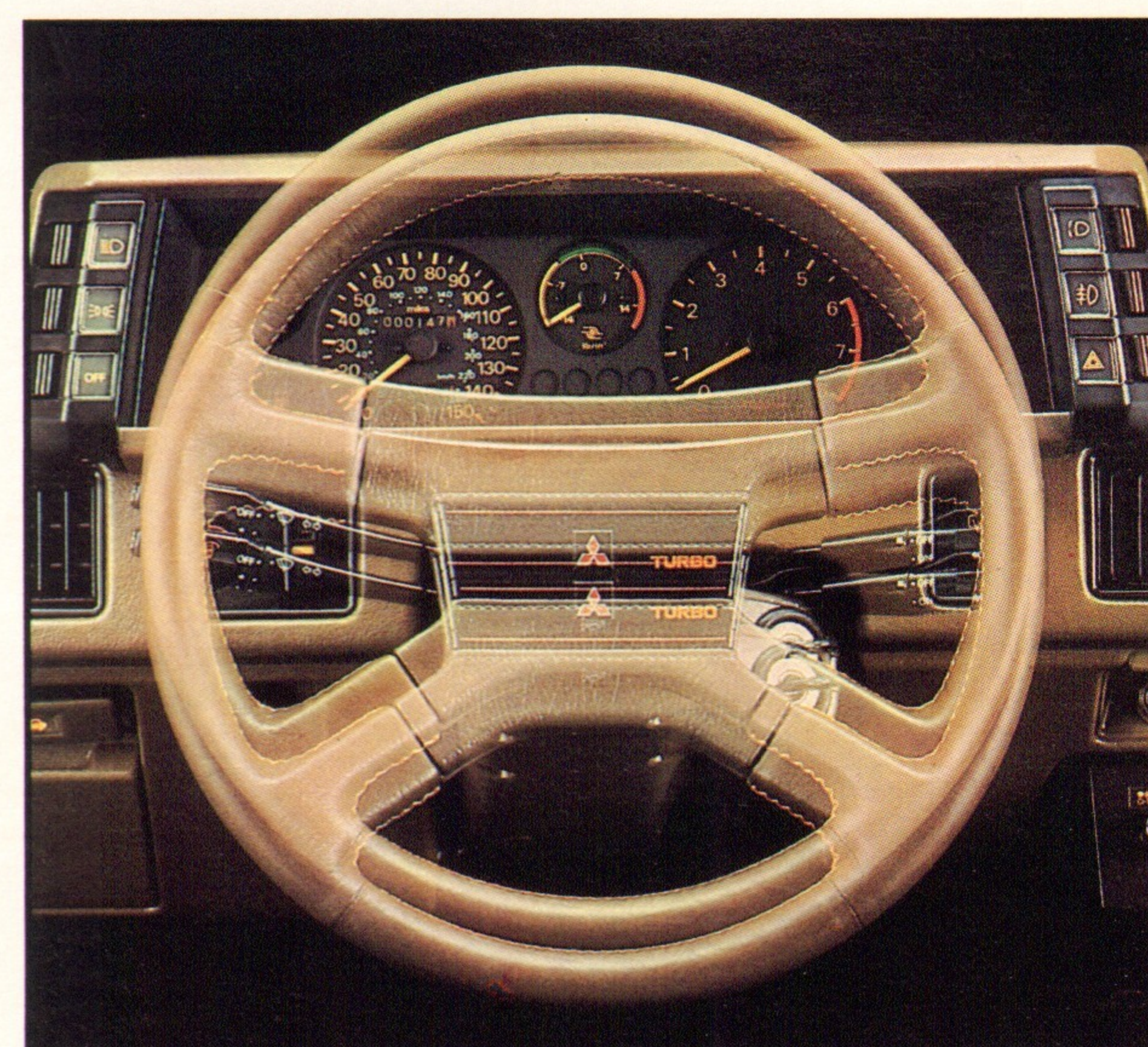
A rear window wiper/washer improves visibility.



Bumper-integrated halogen fog/passing lights brighten your way in inclement weather, and alert others when you plan to pass.



The optional Starion sunroof is recessed, for added head room. It's adjustable and removable as well.



Height-adjustable steering column is standard on all Starions.



Cruise control is standard on all three Starion models, to reduce driving fatigue as well as fuel consumption\*.



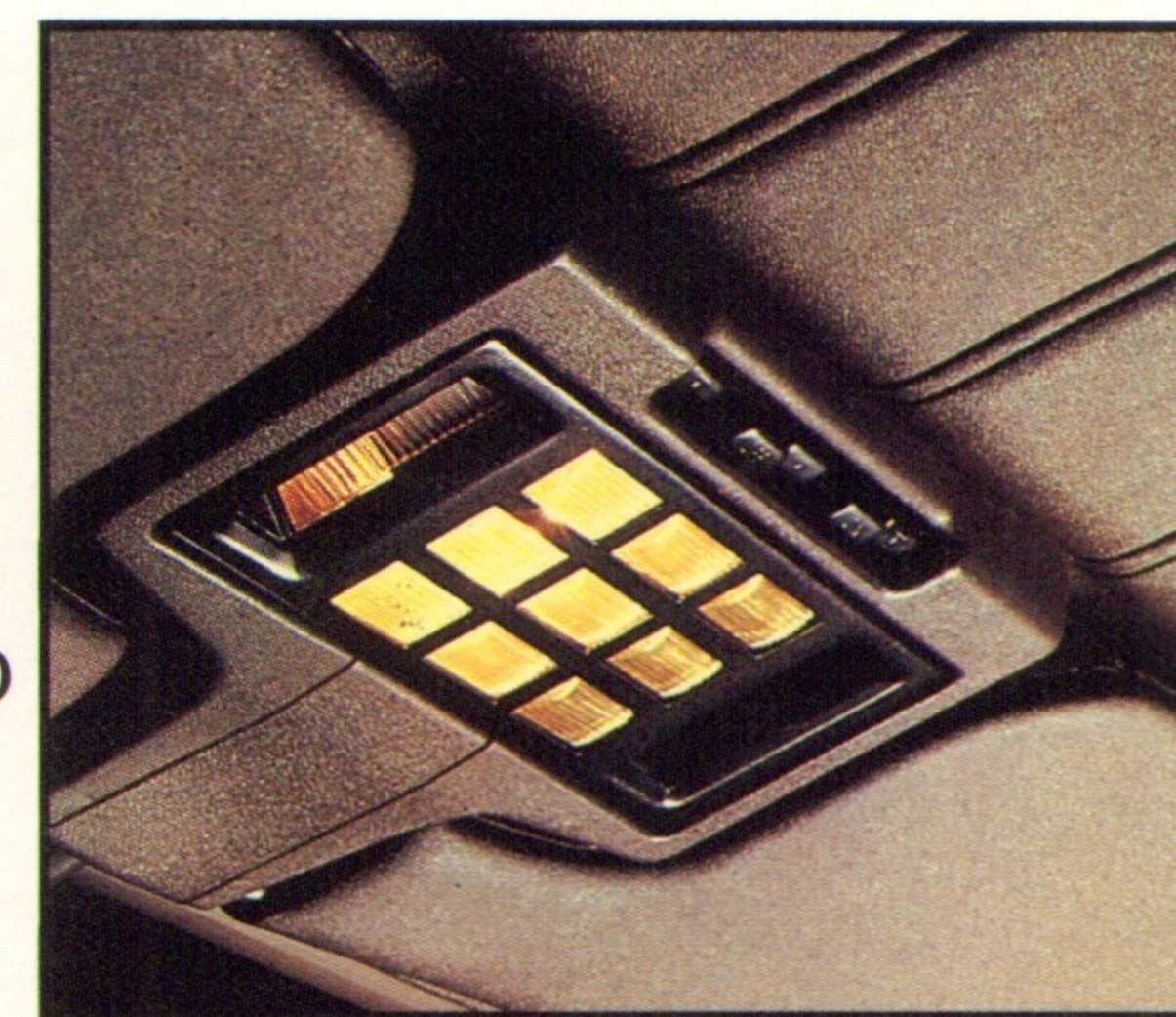
Concealed seat belts retract inside Starion doors.



Starion offers the convenience of remote hatch and locking fuel lid releases.

\*See EPA mileage statement on specifications page.

Thoughtful finishing touches include an overhead map light cluster with fade-out dome light.



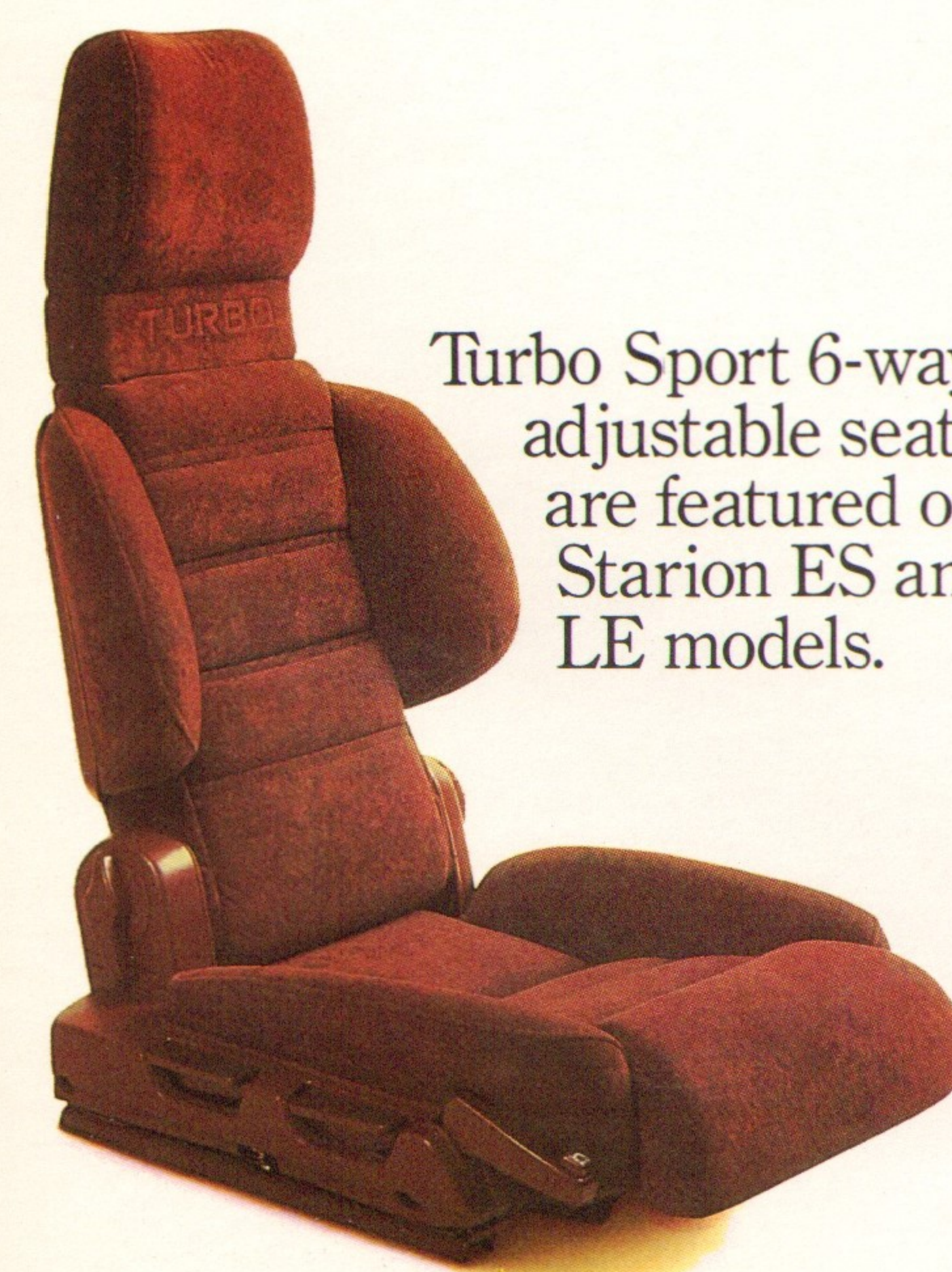
Variable intermittent wipers can be set at intervals from 3 to 12 seconds.



4-speed automatic transmission is an available option on Starion LE.



Convenient door map pockets are standard.



Turbo Sport 6-way adjustable seats are featured on Starion ES and LE models.

## MITSUBISHI ACCESSORIES.

Mitsubishi Accessories are the best way to customize your Mitsubishi vehicle with the same kind of high quality products that make Mitsubishi a world leader in automotive technology.

Mitsubishi Accessories are specially designed to complement and perform with Mitsubishi vehicles. They have been manufactured according to precise engineering and styling specifications. So you know they are designed to fit just right. And work just right. If they don't, you're covered. Because they're all backed by our express limited warranty.



The rear window louvres help keep the interior cool.



Color-coordinated thick cut-pile floor mats help protect your carpeting.

## 1984 MITSUBISHI LIMITED WARRANTY.

Under the 1984 New Vehicle Limited Warranty, Mitsubishi Motors will repair or replace any part of your vehicle supplied by Mitsubishi Motors (except tires) which proves to be defective during the first 12 months or 12,000 miles, whichever comes first.

In addition, under its 1984 Limited Warranty, Mitsubishi Motors will also replace or repair most components of the powertrain, which prove to be defective, for 24 months or 24,000 miles, whichever comes first.

New vehicles are covered by the Mitsubishi Motors 36-month Anti-Corrosion Perforation Limited Warranty. This provides that any authorized Mitsubishi Motors Dealer will repair or replace any sheet metal part, except exhaust system components, on the vehicle that has developed perforation due to corrosion in normal driving conditions. See your Mitsubishi Motors Dealer for further details.

## MITSUBISHI "TRIPLE DIAMOND" SERVICE.

The heritage of excellence and the Mitsubishi pledge of quality represented by the famous three-diamond trademark extends to service after your purchase of a Mitsubishi vehicle. Your Mitsubishi Motors Service Technician is factory-trained to know your Mitsubishi vehicle like no one else can. He will thoroughly check your Mitsubishi vehicle before it is delivered to you. He uses the latest electronic diagnostic equipment. Best of all, he'll use quality Genuine Mitsubishi Parts. No one else can give you the kind of Triple Diamond Service your Mitsubishi vehicle deserves.



MAKE THE CONNECTION  
BUCKLE UP.™

For additional information, see Mitsubishi Accessories Brochure.



**FEATURES: 1984 MITSUBISHI STARION**

**1984 MITSUBISHI STARION**

Drivetrain	LS	LE	ES
2.6-liter, SOHC, 145-hp turbocharged engine	S	S	S
5-speed manual overdrive transmission	S	S	S
4-speed automatic transmission with lock-up converter	—	O	—
Limited-slip differential	—	—	S
<b>Exterior</b>			
Power antenna	S	S	S
Front air dam	S	S	S
Remote fuel filler door release	S	S	S
Tinted glass	S	S	S
Dark upper windshield band	S	S	S
Rear window tint band	S	S	S
Rear window wiper/washer	S	S	S
Halogen headlights	S	S	S
Bumper integrated halogen passing/fog lights	S	S	S
Power remote control dual mirrors	S	S	S
Color-keyed styled mudguards	—	—	S
Tilt-up, lift-off sunroof	O	O	O
14 x 6 alloy wheels	S	S	—
15 x 6.5 alloy wheels	—	—	S
P195/70R14 tires, BSW*	S	—	—
P195/70R14 tires, OWL*	—	S	—
P215/60R15 tires, RBL*	—	—	S
<b>Interior</b>			
Passenger assist grips	S	S	S
Cigar lighter	S	S	S
Digital quartz clock	S	S	S
2-speed windshield wiper/washer	S	S	S
Variable intermittent wiper feature	S	S	S
Analog instrumentation	S	—	S
Graphic/Digital instrumentation	—	S	—
Speedometer	S	S	S
Odometer	S	S	S
Tripmeter	S	S	S
Tachometer	S	S	S
Fuel gauge	S	S	S
Coolant temperature gauge	S	S	S
Ammeter	S	S	S
Oil pressure gauge	S	S	S
Turbo boost gauge	S	S	S
VELNAS trip computer	—	—	S
4-way adjustable front bucket seats	S	—	—
6-way adjustable front bucket seats	—	S	—
Split fold-down rear seat	S	S	S
Leather-faced upholstery	—	O	O
Sunvisors w/pocket on driver's side, vanity mirror on passenger side	S	S	S
Leather-wrapped steering wheel	—	S	S
Storage console	S	S	S
Detachable rear cargo cover	S	S	S
Map pockets	S	S	S
Full carpeting	S	S	S
<b>Functional</b>			
Air conditioning	O	—	—
Air conditioning with automatic temperature control	—	S	S
Electric rear window defogger w/timer cycle feature	S	S	S
ETR AM/FM/stereo + cassette w/6 spkrs	S	—	S
ETR AM/FM/stereo + cassette + graphic equalizer w/6 spkrs	O	S	O
Oil cooler	S	S	S
Power-assisted ventilated 4-wheel disc brakes	S	S	S
Rear Brake Lockup Control System™	—	—	S
Power-assisted steering	S	S	S
Height-adjustable steering column	S	S	S
4-wheel independent suspension	S	S	S
Power-operated front windows	S	S	S
Cruise control	S	S	S
Power door locks	—	S	—
Dual bi-level heating/ventilation with 3-speed fan	S	—	—
with 5-speed fan	—	S	S
Maintenance-free battery	S	S	S

Engine	
Model	G54B w/Turbo
No. cylinders, layout	4-cyl., inline
Bore x stroke, mm/in.	91.1x98/3.59 x 3.86
Displacement, cc/cu. in.	2555/156
Compression ratio	7.0:1
Fuel system	fuel injection
Horsepower @ rpm:	145 @ 5000
Torque @ rpm, lb.-ft.:	185 @ 2500
Engine features include: Single overhead camshaft, Dual Engine Stabilizers,™ turbocharger with ECI™ (electronically controlled fuel injection)	
Emission control system: EGR, air induction, 2 catalytic converters	
<b>Clutch &amp; Transmission</b>	
Clutch: Single-plate, dry, hydraulically actuated, 8.9-in. diameter	
Transmission 5-speed Manual	
Gearbox ratios	
1st	3.369:1
2nd	2.035:1
3rd	1.360:1
4th	1.000:1
5th	0.856:1
Reverse	3.578:1
Final drive	3.545:1

Suspension	
Front: Independent with struts, coil springs, telescopic shock absorbers, 0.83-in. stabilizer bar	
Rear: Independent with struts, coil springs, telescopic shock absorbers, 0.71-in. stabilizer bar	

General		in./mm.
Wheelbase	95.9/2435	
Overall length	173.2/4400	
Width	66.3/1685	
Height	50.2/1275	
Track, front	54.9/1395	
rear	55.1/1400	
Headroom, front	36.6/930	
rear	35.4/900	
Leg room, front	40.7/1035	
rear	29.1/740	
Shoulder room, front	52.4/1330	
rear	51.2/1300	
Hip room, front	53.2/1350	
rear	40.6/1030	
Curb weight, lbs./kg.:		
Starion LS w/5M	2828/1283	
Starion LE w/5M*	2915/1322	
Starion ES w/5M	2926/1327	
*Add 33/14.9 for automatic transmission		

Steering	
Power assisted	standard
Gear ratio	14.3:1
Turns, lock-to-lock	3.0
Turning circle, curb-to-curb, ft.	31.5

Brakes	
Front	ventilated disc
Power assisted	standard
Diameter, in.	9.92
Rear	ventilated disc
Power assisted	standard
Diameter, in.	9.65
Total swept area, sq. in.	359

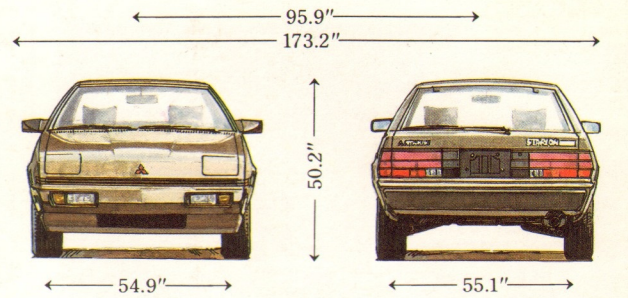
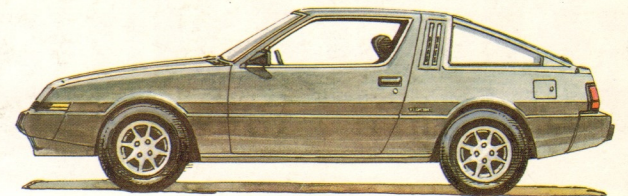
Electrical System	
Battery	12-volt, maintenance-free
Ignition system	transistorized
Alternator rating, amps.	65

Fuel System	
Type fuel required	unleaded
Fuel pump type	electric

Wheels & Tires	
Standard wheel size (LS, LE)	14x6JJ
Starion ES	15x6.5JJ
Type	cast alloy
Standard tire size (LS, LE)	P195/70R14
Starion ES	P215/60R15
Spare type & size	temporary T125/70D15

Refill Capacities	
Fuel tank, U.S. gal.	19.8

\*Sidewall configuration may vary.



**EPA MILEAGE ESTIMATES\***

MODEL	ENGINE		TRANSMISSION		49 STATES		CALIFORNIA	
	LITERS	CYLINDERS	MANUAL	AUTOMATIC	EST. MPG	EST. HWY. MPG	EST. MPG	EST. HWY. MPG
Starion	2.6	4	5-sp	—	21	31	21	31
	2.6	4	—	4-sp	21	32	21	32

\*Use estimated MPG for comparison purposes. Actual mileage may differ due to trip length, speed and weather. Actual highway mileage will probably be less.

Technical data and equipment shown in this catalog are based on the latest available information at the time of publication and are subject to change without notice. Some vehicles are shown with optional equipment. For further information on additional options and accessories, contact your Mitsubishi Motors Dealer. Availability at dealers of vehicles with specific features may vary.

Motor Trend Magazine quotes based on opinions of 1983 Starion. Similarities in 1984 Starion continue to validate these opinions.



**MITSUBISHI**  
TAKES YOU WHERE YOU'VE  
NEVER BEEN BEFORE.™

