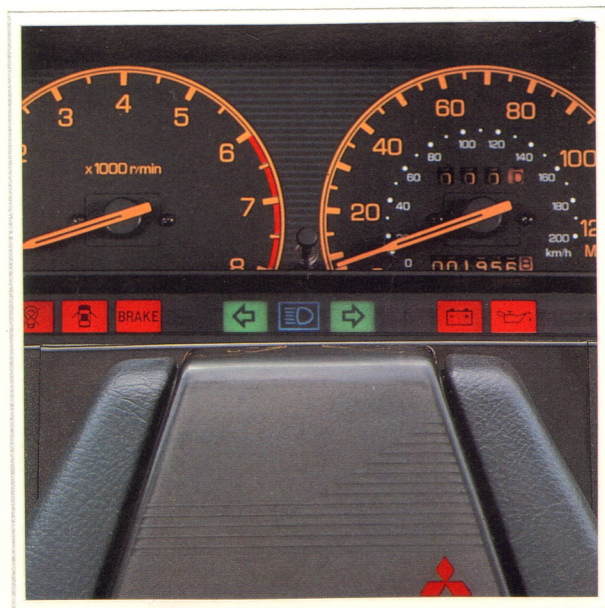


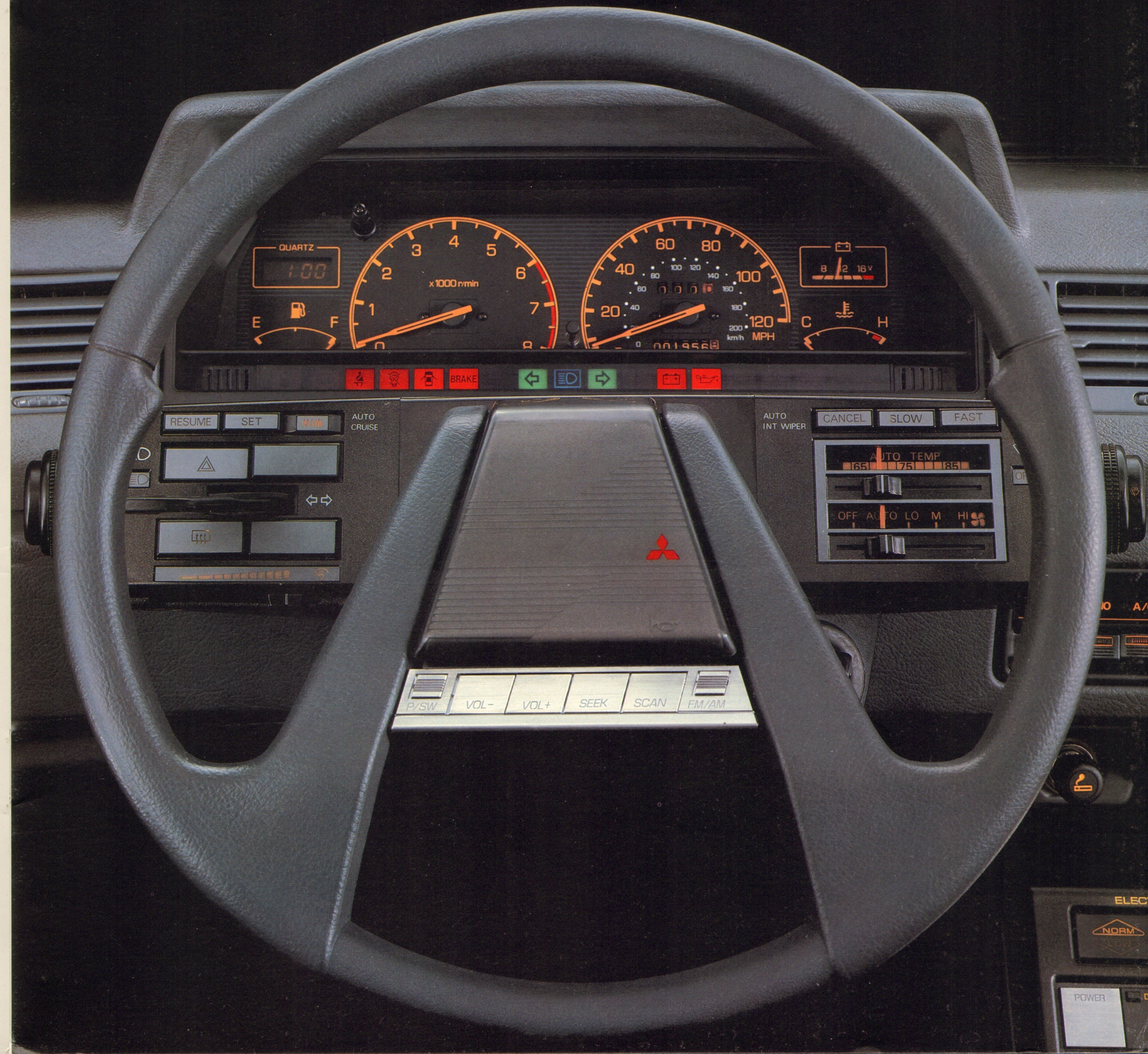
# 1985 Mitsubishi Galant



7891  
Mitsubishi  
Gastric



# Pure Intelligence.



# Pure Indulgence.

For 1985, Mitsubishi Motors unveils what could be the most ingenious luxury sedan in the world. A product of true engineering brilliance, it represents Mitsubishi technological excellence in its most luxurious form.

Its sumptuous interior reflects a highly advanced application of ergonomic design. Careful positioning of all controls and instru-

mentation puts everything at your disposal.

The driver's seat has a see-through headrest. And six different adjustment factors to comfortably accommodate almost every variation of the human anatomy. A height-adjustable steering column adapts to your needs.

The front passenger's seat is also fully reclining and of generous proportions. It, too,

features a see-through headrest that is adjustable to three different positions.

In the rear cabin, the Galant treats its passengers no less luxuriously. With a seatback that actually reclines. There are individually adjustable thigh supports. Special two-way

headrests with lateral adjustability. Even a fold-down center armrest with a handy built-in storage console.

But for the Galant, its sophisticated interior ergonomics are only the beginning. To learn more about all the many clever innovations this truly enlightened luxury sedan affords, all you need to do is turn the page.

*The Galant's handsome, anatomically designed seats are upholstered in plush velour fabric and generously padded for supreme comfort.*



# The luxury sedan that does everything but talk back.

The new Galant possesses a vast array of ingenious comfort and convenience features to enhance your driving pleasure. Utilizing computerized precision, it literally "thinks" for you. So you can spend more time enjoying getting where you're going.

Advanced electronics abound. Full power assists have been applied to numerous areas. Like the windows. Door locks. Both outside mirrors. Even the radio antenna. And, their accurate control is at your disposal.

An electronic control module is mounted

right on the fully height-adjustable steering column. From this convenient position you can precisely regulate the function of the automatic temperature control air conditioning system, cruise control, headlamps, directional signals. And more.

A unique electronic power steering unit provides power assist according to vehicle speed, rather than engine speed. So the Galant does all the hard work in parking maneuvers. And you get a sure, confident road feel at higher speeds on open roads.

For stopping power, the Galant is equipped with ventilated power-assisted front disc brakes, and self-adjusting rear drum brakes.

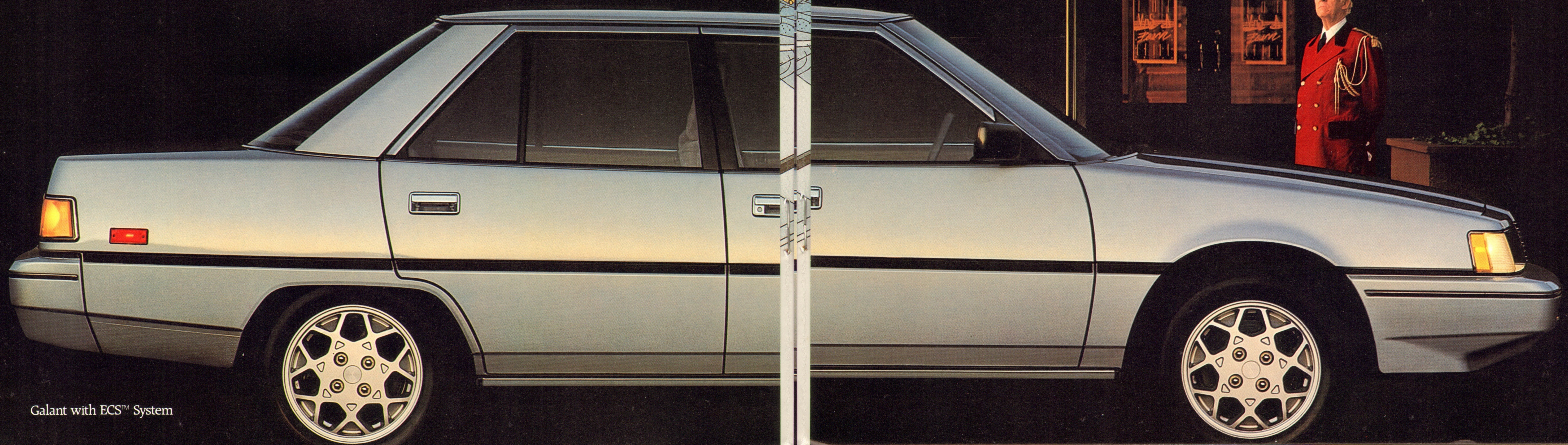
The Galant even has a special electronic system to help you in performing the most perfunctory of driving duties. The ETACS III™ electronic time and alarm control system monitors and regulates a number of timed functions throughout the vehicle. It reminds

you if you've forgotten to turn off the headlights. It won't let you lock your keys in the car. It even gives you time to raise the power windows after you've shut off the ignition.

The list of unique functions this electronic wonder can perform is seemingly endless.

And, the brilliant new Mitsubishi Galant does them all quickly and quietly.

Without a single word of disagreement.



Inside and out, the new Galant Sedan is filled with advanced Mitsubishi engineering. Its innovative features combine to create exceptional performance in a luxuriously comfortable and affordable automobile.

The Galant's brilliance is immediately apparent in its sleek, handsome body design. Mitsubishi engineers did extensive wind-tunnel testing to determine the ideal shape for the Galant. And the result is not only very aerodynamically efficient, but extremely beautiful as well.

The graceful sloping hood and its overall wedge shape slices through the wind. Numerous steps have been taken to reduce turbulence in specific areas. The windshield wipers are concealed. Both front and rear bumpers are integrated into the body. The taillights wrap smoothly around the rear of the car to avoid sharp edges. Even the Galant's flush roof and inset drip rails are designed for less wind resistance.

The bottom line for all this effort is a 0.36 coefficient of drag, one of the lowest in the class. Which all means the clever Mitsubishi engineers were once again very successful in their painstaking efforts.

The new Galant's suspension system is also the result of lengthy and intense research and development activities.

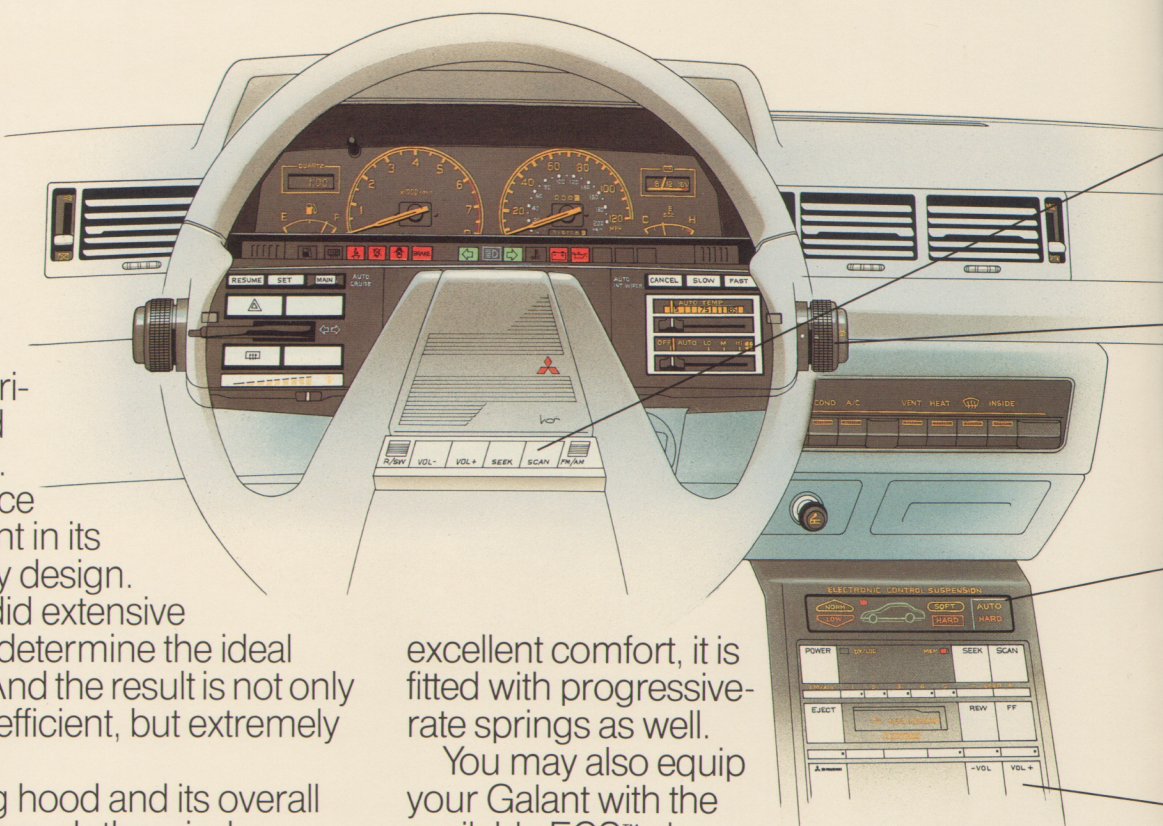
It utilizes a modified MacPherson strut arrangement up front. A trailing-arm, three-link design with telescopic shocks in the rear. And stabilizer bars both fore and aft. To maintain superior handling, while at the same time providing you

excellent comfort, it is fitted with progressive-rate springs as well.

You may also equip your Galant with the available ECS™ electronically controlled suspension system.

This unique unit is judged by many to be one of the most ingenious suspension systems ever utilized in a production vehicle. ECS™ is a computer-controlled system that actually changes the firmness of the suspension to ideally match road and load conditions. It works instantly and automatically to give you the perfect ride for the situation.

At its heart is a tiny microprocessor that constantly receives data from various sensors throughout the vehicle. It controls four integral shock absorber units that feature air chambers and adjustable valves. When you briskly accelerate, turn, brake or drive over rougher surfaces, the suspension automatically adjusts itself to help maintain the optimum stability and handling characteristics. And when you're cruising along a smooth road, the system becomes more compliant for extraordinary comfort. And the automatic leveling feature helps to



The smooth four-speed automatic overdrive ELC™ transmission has electronic operation and handy overdrive lockout switch.

# An ingenious sum of parts.

The available stereo system with remote radio tuning switches puts the audio controls right at your fingertips.

An electronic control module puts several functions within easy reach. They include the air conditioning system, lights, signals, windshield wiper/washer, cruise control and more.

In the automatic mode, ECS™ thinks for itself. In the manual mode, the firm setting is maintained. And in either case, a light panel keeps you informed at all times of activity.

With so many standard features, Galant has few options. One is the single-chassis radio, cassette and graphic equalizer stereo system. It has electronic touch-tune switches mounted right in the steering wheel.

The ECS™ system has the power to automatically raise and lower ride height. Stability and aerodynamics are enhanced at higher speeds.

Galant's 2.4-liter MCA-Jet™ engine is smooth and powerful with patented Mitsubishi Dual Engine Stabilizers™ and computerized fuel injection.

The brain behind the ECS™ system is in this box. It processes information from various sensors throughout the car and directs the appropriate suspension adjustments.

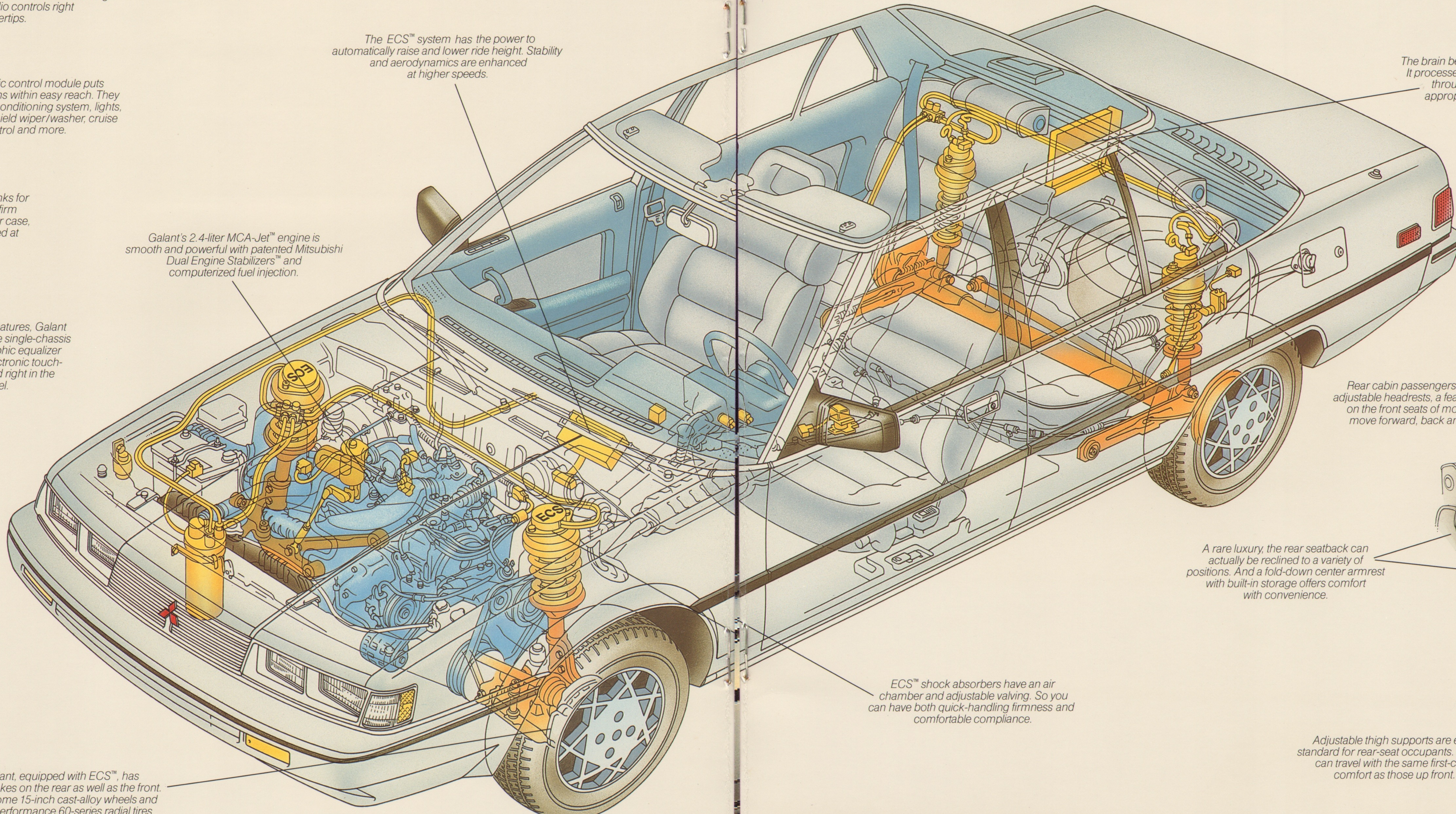
Rear cabin passengers benefit from adjustable headrests, a feature found only on the front seats of most cars. They move forward, back and sideways.

A rare luxury, the rear seatback can actually be reclined to a variety of positions. And a fold-down center armrest with built-in storage offers comfort with convenience.

ECS™ shock absorbers have an air chamber and adjustable valving. So you can have both quick-handling firmness and comfortable compliance.

Galant, equipped with ECS™, has disc brakes on the rear as well as the front. Handsome 15-inch cast-alloy wheels and high-performance 60-series radial tires are also included.

Adjustable thigh supports are even standard for rear-seat occupants. So they can travel with the same first-class comfort as those up front.



maintain the proper attitude at all times. An additional function comes into play at higher speeds. ECS™ automatically reduces the ride height of the car. In this position the Galant becomes even more stable. As well as even more aerodynamically efficient.

The ECS™ equipped Galant Sedan is recognizable by its distinctive 15-inch cast-alloy wheels. For superb traction, they are mounted with 60-series low-profile, high-performance steel-belted radial tires. The system also includes power-assisted disc brakes at all four wheels to give additional smooth stopping power.

The new Galant is powered by a computerized, fuel-injected, 2.4-liter MCA-Jet™ engine. Its unique three-valve combustion chamber swirls the air/fuel mixture for more even burning. So it can do more with less.

Also contributing to greater fuel efficiency\* is its electronically controlled fuel injection system. The ECI™ microprocessor uses a variety of information to inject precisely the right amount of fuel into the engine.

And it's all executed in just milliseconds. To provide smooth and quiet operation, the engine utilizes unique, patented Mitsubishi Dual Engine Stabilizers™.

They're designed to minimize engine vibration. And optimize smooth, quiet driving pleasure.

The shifting of gears is superbly managed by an advanced electronically controlled four-speed automatic overdrive transmission.

This unit has a special new ELC™ electronic lockup control torque converter for a

more positive transfer of power. And a handy overdrive-lockout button on the shifter helps you maintain better acceleration control in traffic or on winding roads.

For controlling the environment inside the car, the Galant Sedan features an automatic-temperature-control, integrated air conditioning, heating and ventilation system. All you do is select the desired temperature, and move



The integral air conditioning, heating and ventilation system features a fully automatic temperature control mode. And you can select any or all air outlets individually.

To enhance your driving experience even further, the Galant also offers a dazzling array of convenience features, many of which are controlled by the unique electronic time and alarm control system.

ETACS III™ lights the ignition switch when you get in, so you can insert the key more easily in the dark. It also keeps the interior dome light on for a few moments to assist in exiting the Galant. It even turns off the rear window defogger after several minutes.

Another innovative aspect of ETACS III™ is how it works with the windshield wiper/washer system. You can select one of two wiper speeds, or one of two modes of intermittent operation. In the manual mode, the frequency of operation can be adjusted. And in automatic, the wiper speed increases as the car speed increases. So it automatically keeps pace with the amount of precipitation.

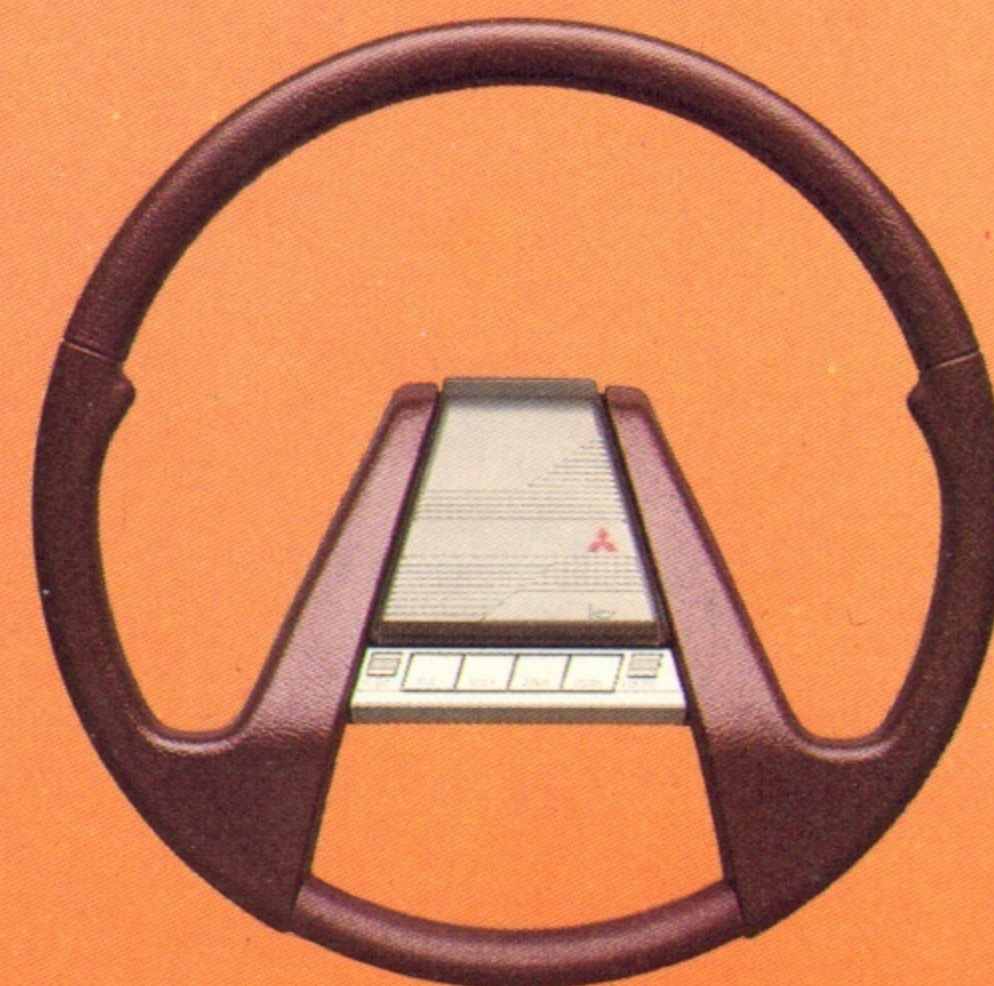
The list of advanced features and sophisticated electronics continues on. And on. In fact, when you add it all up, the new Mitsubishi Galant is one of the finest luxury sedans on the road today.

And isn't driving a vehicle of this caliber exactly where you want to be?



\*See EPA mileage figures in specification section.

# Perfection has few options.



*The available stereo system with remote radio tuning switches puts the audio controls right in the steering wheel.*

The Galant has an exceptionally long list of standard features. So long, in fact, that there's very little room at all left for options.

For example, witness the Galant's sumptuous interior. In addition to its anatomically designed, and very amply sized seats, it has a large, padded center console featuring convenient built-in storage room.

Each door has its own comfortable armrest, with power window controls positioned at your fingertips. And to help keep everything in its place, map pockets are mounted in the front doors, while rear passengers



*The available sliding glass sunroof is electronically operated and comes with a built-in sunshade.*

have easy access to large pockets built right into the front seatbacks.

For your audio enjoyment, the Galant has an electronically tuned AM/FM stereo cassette system with six high-fidelity speakers. The only way to improve on this fine system is with the

available single-chassis radio, cassette deck and graphic equalizer. It features electronic touch-tune radio switches built right into the steering wheel for convenient operation. And a console-mounted graphic equalizer enhances superior sound reproduction.

From your command position in the driver's seat, you're afforded an impressive view of the Galant's intelligent array of advanced instrumentation. It's designed to inform you of all vital functions at a glance. There's even a precision digital quartz clock for timely convenience.

If it's sunshine you want, the Galant can accommodate you with an available sliding-glass electronic sunroof. It opens and closes with the push of a button. It also comes with a sliding sunshade. So you can let in just the

amount of sun that you desire.

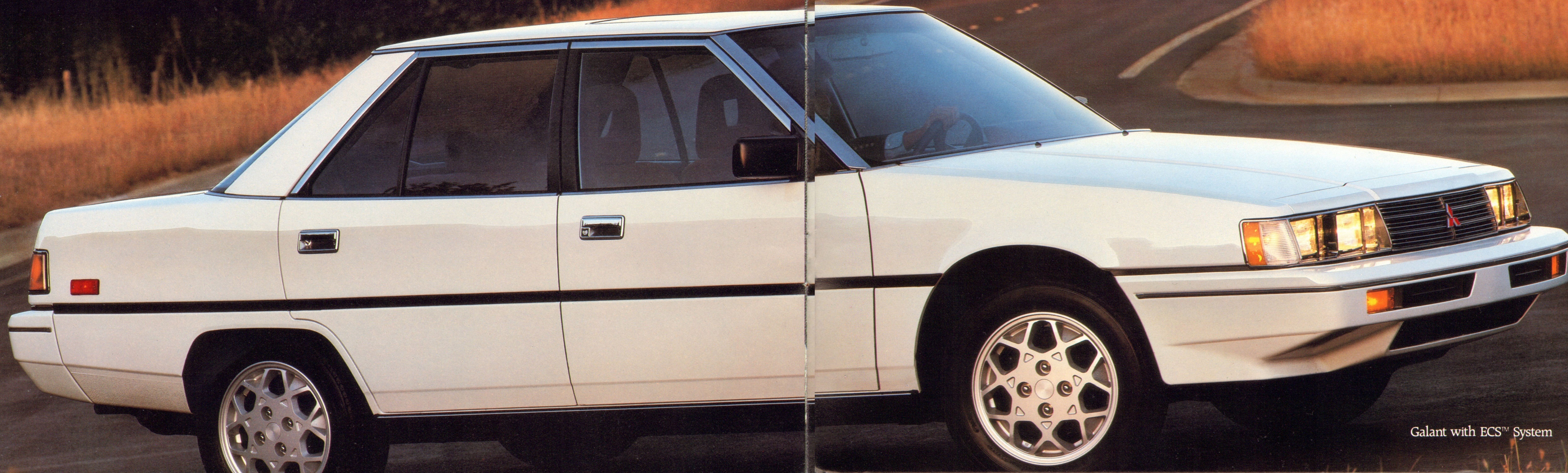
And then there's the ingenious ECS™ electronically controlled suspension system. This optional package provides both luxurious comfort as well as superb handling.

And, it does it all automatically.

The ECS™ system also includes handsome, specially designed 15-inch cast alloy wheels fitted with wide, 60-series steel-belted radial tires. When it comes to beauty, function and comfort, this outstanding available system provides them all in clever combination.

As you can readily see, because of its already-numerous standard comfort and convenience features, the new Galant has a very short, but very complete, options list.

And that perfection is an option few automobiles in the world can offer.



# 1985 Galant facts and figures.

## Features & Options

Standard ●  
Optional ○

### DRIVETRAIN

2.4-liter, 101-hp engine ●  
ECI™ electronic fuel injection ●  
Dual Engine Stabilizers™ ●  
MCA-Jet™ combustion system ●  
4-speed ELC™ automatic transmission w/overdrive lockout control ●

### MECHANICAL/FUNCTIONAL

Power-assisted ventilated front disc/self-adjusting rear drum brakes ●  
Power-assisted ventilated front disc/solid rear disc brakes (included w/ECS™ System option) ●  
Sealed brake fluid reservoir ●  
Strut type independent front suspension, twist beam rear axle w/coil spring, lateral rod and stabilizer bar ●  
Electronically controlled suspension (ECS™ System), includes solid rear disc brakes, aluminum alloy wheels, 195/60HR15 BSW tires ●  
EPS™ electronic power steering ●  
Cruise control ●  
Automatic temperature control integrated air conditioning, heating and ventilation system ●  
Maintenance-free battery ●  
Electronic ignition system ●  
5-year/50,000-mile Anti-Corrosion Perforation Limited Warranty† ●

### EXTERIOR

Color-keyed integrated bumpers ●  
Bright grille, headlight bezels ●  
Halogen headlights ●  
Styled steel wheels w/full covers ●  
15-in. aluminum alloy wheels (included with ECS™ System option) ●  
185/70HR14 H-rated radial tires, BSW ●  
195/60HR15 H-rated radial tires, BSW (included with ECS™ System option) ●  
Tinted glass w/shaded band ●  
Dual electric remote control mirrors (convex RH mirror) ●  
Bodyside molding ●  
Automatic power radio antenna ●

### EXTERIOR COLORS

Rocky White ●  
Captivo Brown Metallic ●  
Kaiser Silver Metallic ●  
Bright Silver Metallic ●  
Chateau Beige Metallic ●  
Provence Red Metallic ●

### INTERIOR

Remote hood, fuel filler door, trunk openers ●  
Day/night rearview mirror ●  
Dual sunvisors w/illuminated passenger vanity mirror ●  
Cigarette lighter ●  
Passenger assist grips ●  
Armrests with power control switches ●  
ETACS III™ controls: ●  
Automatically variable intermittent wipers ●  
No-scrape washer/wiper action ●  
Fadeout interior courtesy light ●  
Headlight "on" alarm ●  
Parking brake "on" warning ●  
Key in ignition alarm ●  
Ignition key lock light ●  
Fasten seatbelt warning ●  
Power windows w/30-sec. power-off delay ●  
Power door lockout when key is in ignition and engine is off ●  
Rear window defogger timer ●  
Tachometer ●  
Tripmeter ●  
Voltmeter ●  
Fuel gauge ●  
Coolant temperature gauge ●  
Digital quartz clock ●  
Power windows ●  
Power door locks ●  
Power exterior mirrors ●  
Power sliding glass sunroof w/inner shade ●  
Front door map pockets ●

## Features & Options, continued

### INTERIOR

Carpeted lower door panels ●  
Cut-pile carpeting (passenger area) ●  
Plush carpeting (cargo area) ●  
2-spoke soft-feel steering wheel ●  
Height-adjustable steering column ●  
Electronic AM/FM stereo radio (ETR) + cassette w/6 speakers ●  
ETR AM/FM stereo radio + cassette + graphic equalizer w/6 speakers and steering wheel control switches ●  
Large console with armrest pad, center storage, audio system controls ●  
Low-back front bucket seats w/see-through headrests, velour upholstery, seatback pockets ●  
6-way adjustable driver's seat ●  
Reclining rear seat w/adjustable thigh support, 2-way adjustable headrest, center armrest w/storage area ●

## Specifications

### ENGINE

Model designation	G64B
No. cylinders, layout	4-cyl., inline
Bore x stroke, mm	86.5 x 100.0
In	3.41 x 3.94
Displacement, cc	2350
Cu. in.	143.4
Compression ratio	8.5:1
Carburetion	fuel injection
Horsepower at rpm, 49-state & Calif.	101 at 5000
Torque at rpm., ft.-lbs: 49-state & Calif.	131 at 2500

Engine features include: Single overhead camshaft, Dual Engine Stabilizers™, MCA-Jet™ combustion chamber design, automatic valve lash adjusters, ECI™ electronic control fuel injection. Emission control system: EGR air induction 3-way catalyst w/feedback control.

### TRANSMISSION

Type... 4-speed automatic with overdrive and electronic control (ELC)

Gearbox ratios:	
1st	2.846:1
2nd	1.581:1
3rd	1.000:1
4th	0.685:1
Reverse	2.176:1
Max. ratio at stall	2.170:1
Final drive ratio	3.187:1

### SUSPENSION

Standard Suspension:

Front: Independent with struts, coil springs, telescopic shock absorbers, 0.67-in. stabilizer bar.

Rear: Beam axle with trailing arms, coil springs, telescopic shock absorbers, 0.79-in. stabilizer bar.

Optional ECS™ Electronically Controlled Suspension:

Front: Independent with struts, coil springs, electronically controlled air-type shock absorbers with self-leveling and automatic valving, 0.75-in. stabilizer bar.

Rear: Beam axle with trailing arms, coil springs, electronically controlled air-type shock absorbers with self-leveling and automatic valving, 0.79-in. stabilizer bar. 8-bit microprocessor w/2K memory.

### DIMENSIONS -in./mm.

Wheelbase	102.4/2600
Overall length	183.1/4650
Width	66.7/1695
Height	51.6/1310
Track, front	56.9/1445
Track, rear	55.3/1405
Head room, front	38.3/972
Rear	37.1/942
Shoulder room, front	55.5/1410
Rear	55.0/1397
Leg room, front	40.3/1024
Rear	36.5/927
Hip room, front	52.9/1344
Rear	52.0/1321

Technical data, features, options and other equipment shown in this catalog are based on the latest available information at the time of printing and are subject to change without notice. Some vehicles are shown with optional equipment. For further information on additional options and accessories, contact your Mitsubishi Motors Dealer. Availability at dealers of vehicles with specific features may vary.

### CURB WEIGHT-lbs./kg.

Curb weight	2778/1260
w/ECS™ System	2822/1280
Weight distribution, % front/rear	62/38

### STEERING

Electronic Power Steering (EPS™)	standard
Type: Electronically controlled rack-and-pinion; boost varies with vehicle speed	
Overall ratio	16.5:1
Turns, lock-to-lock	2.9
Turning circle, curb-to-curb, ft.	34.8
Height-adjustable steering column	standard

### BRAKES

Power-assistance	standard
Brakes:	
Type, front	ventilated disc
Diameter x width, in.	10.4 x 0.94
Type, rear	drum
Diameter x width, in.	8.0 x 1.4
Total swept area, sq. in.	268
Brakes, w/optional ECS™ System:	
Type, front	ventilated disc
Diameter x width, in.	11.3 x 0.94
Type, rear	solid disc
Diameter x width, in.	11.0 x 0.39
Total swept area, sq. in.	415

### ELECTRICAL SYSTEM

Battery, type	12-volt, maintenance-free
Ignition system	transistorized
Alternator rating, amps	65

### FUEL SYSTEM

Type fuel required	unleaded
Fuel pump type	electric
Fuel tank capacity, U.S. gal.	15.9

### WHEELS & TIRES

Wheel type & size:	steel disc, 14 x 5.5JJ
w/ECS™ System	aluminum alloy, 15 x 6JJ
Tire type & size:	185/70HR14
w/ECS™ System	195/60R15
Spare tire type & size	temporary, T125/70D15
w/ECS™ System	temporary, T125/70D16

### FUEL ECONOMY FIGURES\*

		49 States	California
		Est.	Est.
Model	engine/trans.	city/hwy	city/hwy
Galant	2.4/4A	21/26	21/26

\*Use EPA estimated city MPG for comparison purposes. Your mileage may vary with trip length, speed and weather. The actual highway mileage will probably be less.

†Within 5 years or 50,000 miles, whichever comes first, MMSA will repair or replace at no charge any body sheet metal panel found to have rust-through due to corrosion in normal use.

Call 1-800-447-4700 for your nearest Mitsubishi Motors Dealer. For *Motor Trend's 1985 Mitsubishi Buyer's Guide*, send a check or money order for \$3.95, payable to MMSA, to: Buyer's Guide, Box #26470-GB, Santa Ana, CA 92799-6470.

Part #5004. Litho in U.S.A. ©1984 Mitsubishi Motor Sales of America, Inc.





Takes you where you want to be.™

