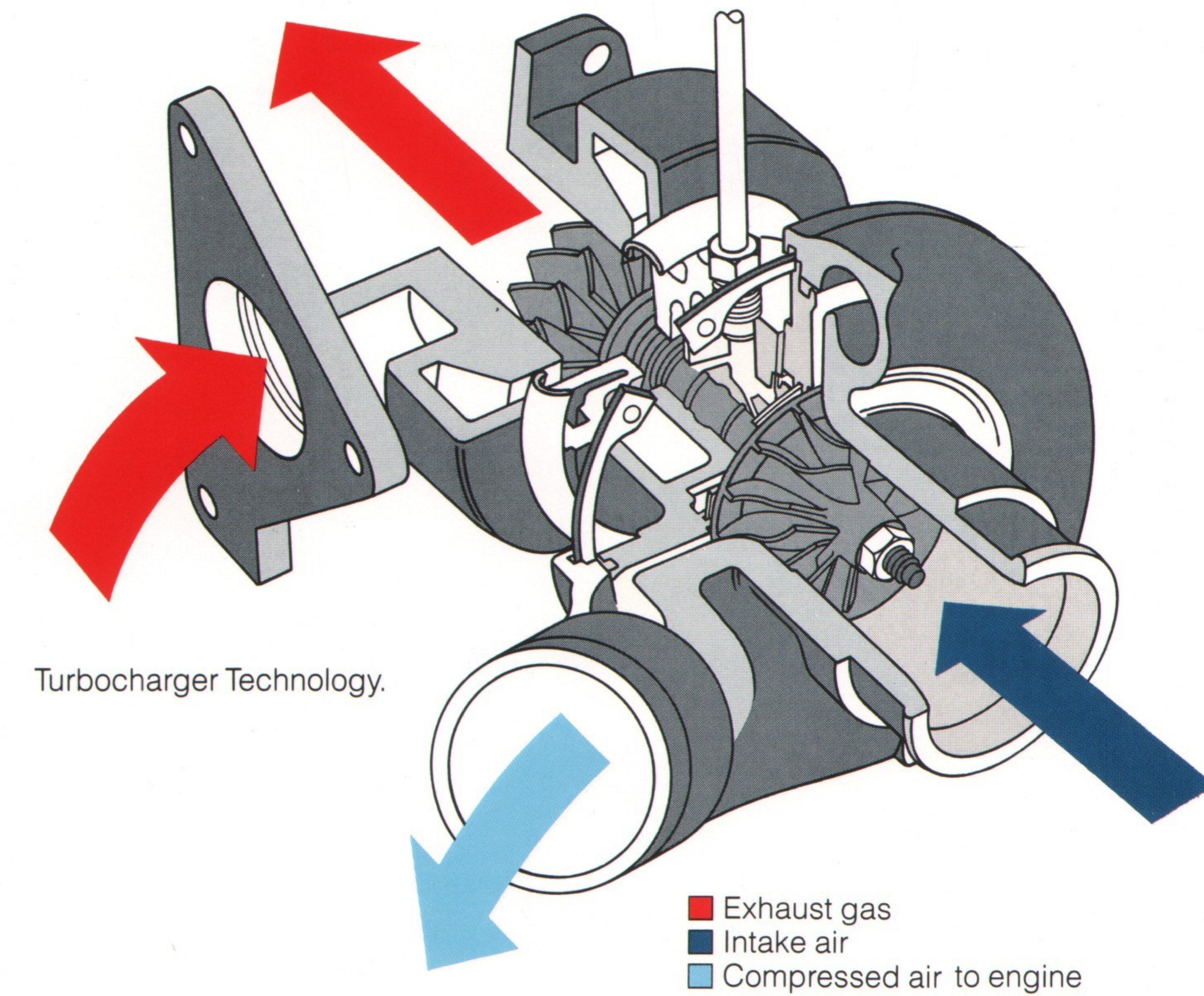


1988 Cordia



M I T S U B I S H I



Mitsubishi Motors...Our Experience Shows.

In the last seventy years, Mitsubishi Motors Corporation has become one of the world's largest manufacturers of cars and trucks, producing over 1.2 million vehicles last year alone.

In 1988, the quality vehicles that carry the Mitsubishi name are the result of years of experience, research and technological refinement. All combined to provide you with a car that is not only reliable, stylish and efficient, but one that truly performs.

There's Always A Better Way.

Mitsubishi has long been recognized throughout the industry for its leadership in engineering advancements that improve and enhance the performance and durability of its vehicles. Some of its many achievements include Dual Engine Stabilizers™ an internal counter balancing system used in most of its 4-cylinder powerplants to neutralize inherent vibrations for quieter, smoother engine operation; aerodynamic flush body styling for improved efficiency, and a major boost to performance...turbocharger technology.

Mitsubishi is continuing its commitment to the research and development of components, integrated control systems, and aerodynamic exterior and ergonomic interior designs to develop cars, trucks and utility vehicles to meet the needs of the future.

Perhaps the Ultimate "Coupe de Grace"

ROAD & TRACK* said it best when they wrote, "We were forced with picking our favorite, affordable, sports-coupe turbo engine. Lists were studied, merits considered, and, in the end, the Cordia Turbo was selected top of the heap."

The 1988 Cordia Turbo is an excellent example of the ideal blend of performance and style, all at a truly affordable price.

For those who are not turbo inclined, the 1988 Cordia L offers quick, responsive performance in a non-turbocharged sports hatchback. Either way, the 1988 Mitsubishi Cordia is a car that really delivers...features, performance and sporty good looks.

*ROAD & TRACK, December, 1986.





Cordia Turbo

Check Your Pulse Before Entering.

For anyone seeking an adrenaline-pumping, pulse-jumping experience behind the wheel—we have what you're looking for.

The Cordia Turbo defines excitement with a 1.8 liter electronically fuel injected, turbocharged 4-cylinder engine that delivers 116 horsepower and 129 lbs.-ft.

torque. All this motion magic is set astride unidirectional alloy wheels with 195/60HR14 performance radial tires.

In simple language, that translates into a car that will do 0-50 in about the time that it will take you to read this sentence—or, to be exact, 6.41 seconds*.

Cordia L has the style to make your

blood race. It boasts a 2.0-liter SOHC engine that works well with a four-wheel independent sport suspension with front and rear stabilizers.

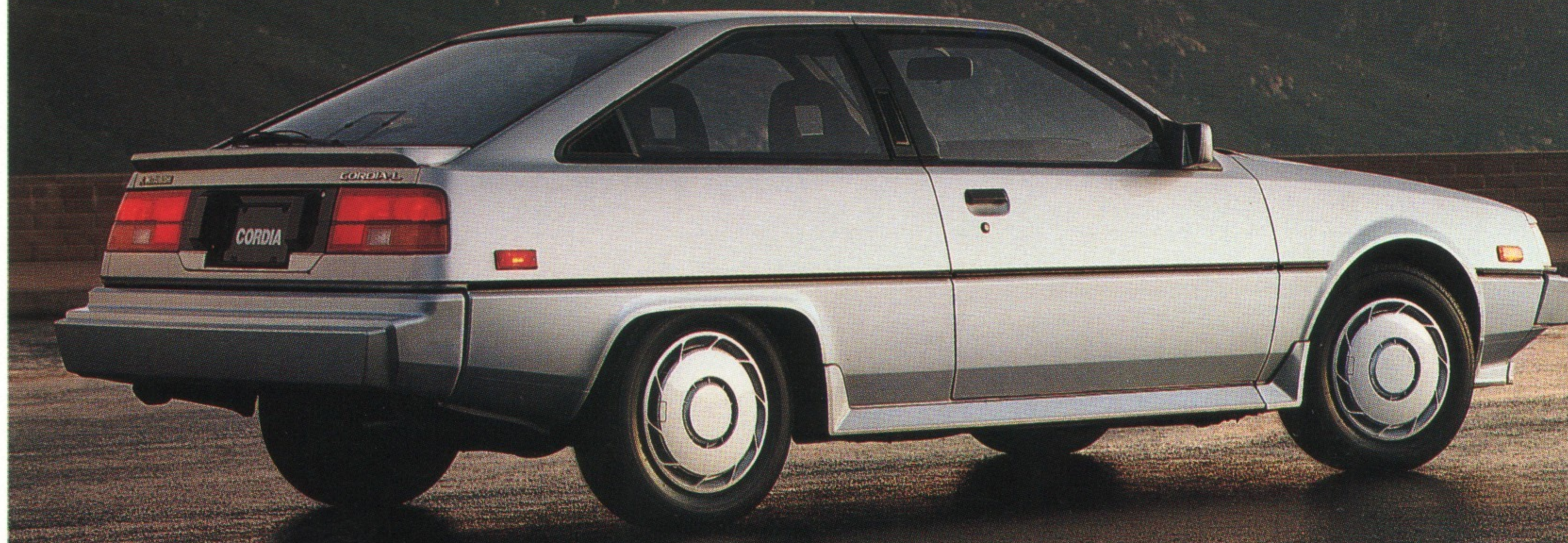
Both models come with an extended front air dam, rear spoiler and side-sill extensions that aren't just for appearance's sake. They work to improve aerodynamics

and help deliver a slippery 0.33 coefficient of drag.

All this exhilarating performance can be yours for a price that won't stop your heart.

*Time compiled by a professional race driver in a 1987 model.

Cordia L



A Function of Comfort.

Comfort like this is usually reserved for cars at home prowling the Autobahn's fast lane. This is a driver's car, with the kind of interior that brings out the best in Cordia.

Notice the high side bolsters on these body fitted, reclining sport bucket seats with adjustable see-through head rests.

They're essential to keeping you comfortably supported when dicing through the turns.

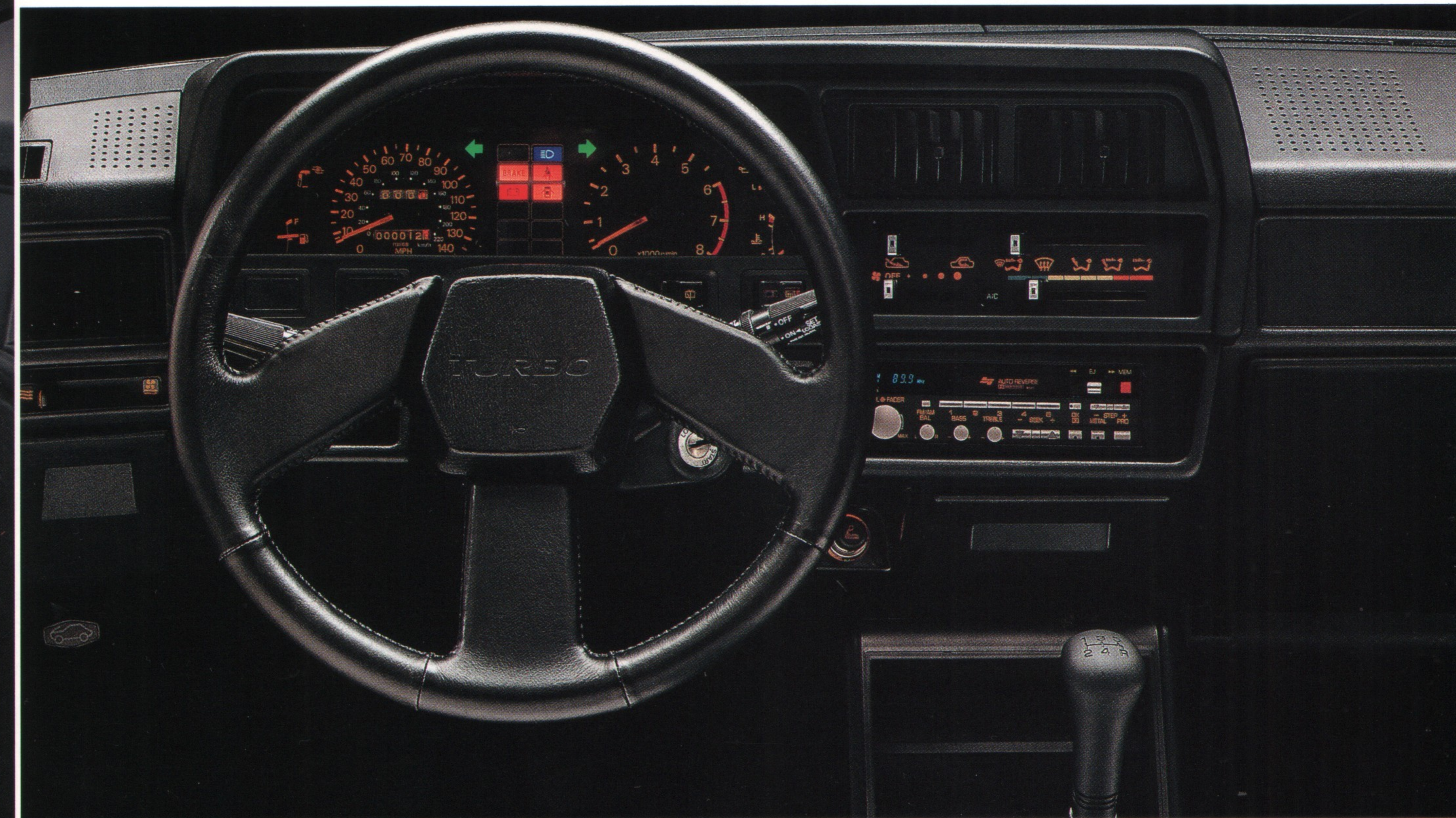
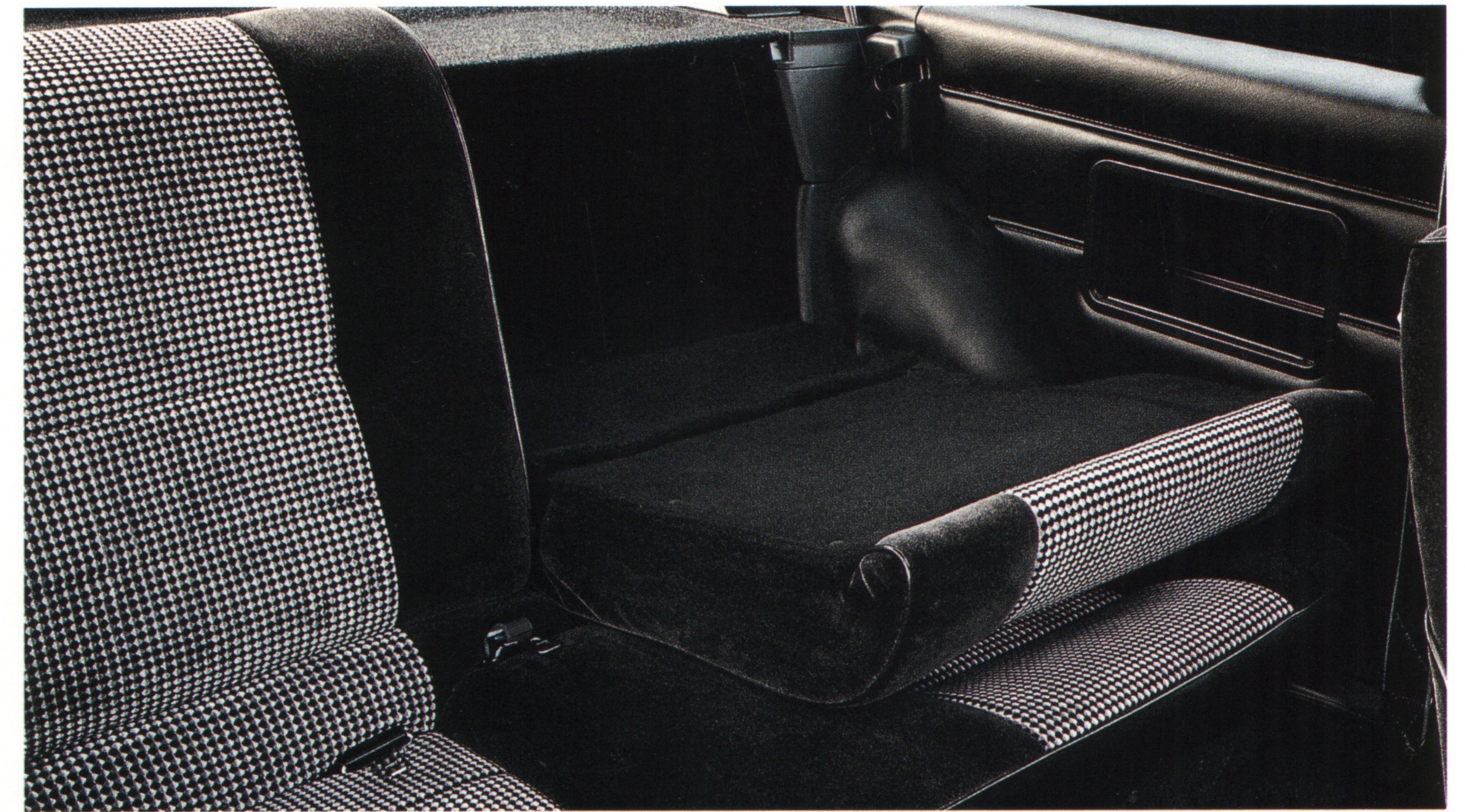
Grasp the Cordia Turbo's leather wrapped steering wheel that tilts up or down to fit your personal driving style. Then discover the control that Cordia's variable

boost power steering puts in your hands. It gives you more assist for parking and more road feel when you're cruising.

Down on the floor you'll find a 5-speed manual overdrive transmission, and if you opt for the Cordia L, you can get an optional electronically controlled (ELC™)

3-speed automatic. In back, there's the versatility of split, fold-down seats and a rear cargo cover to hide valuables from prying eyes.

And all at a value that's a comfort in itself.



Instant Recognition.

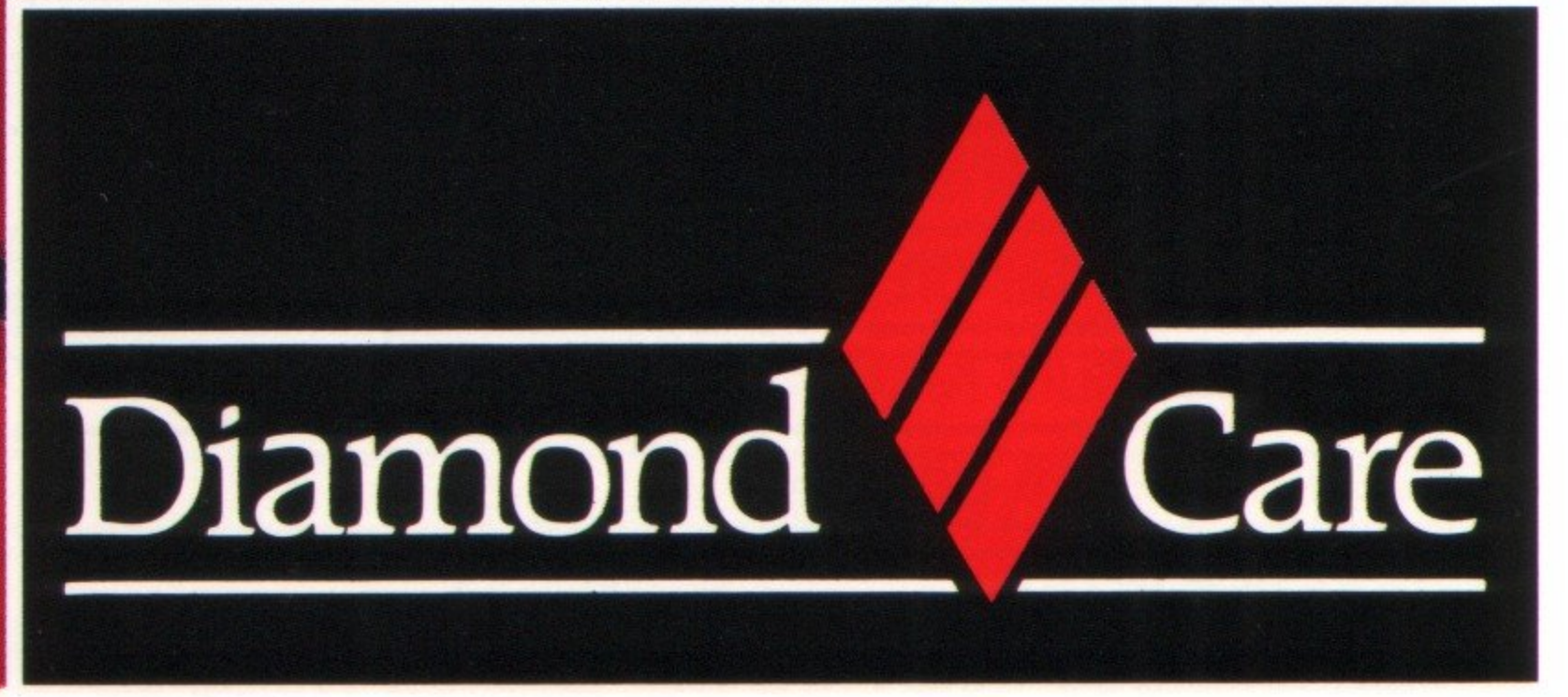
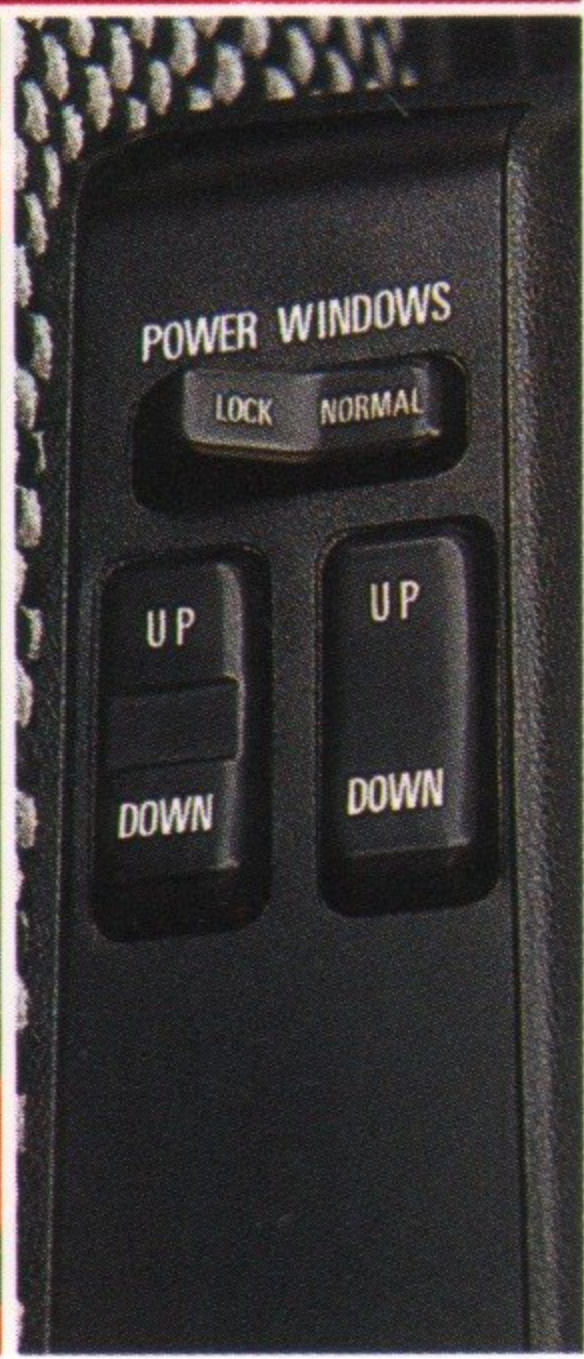
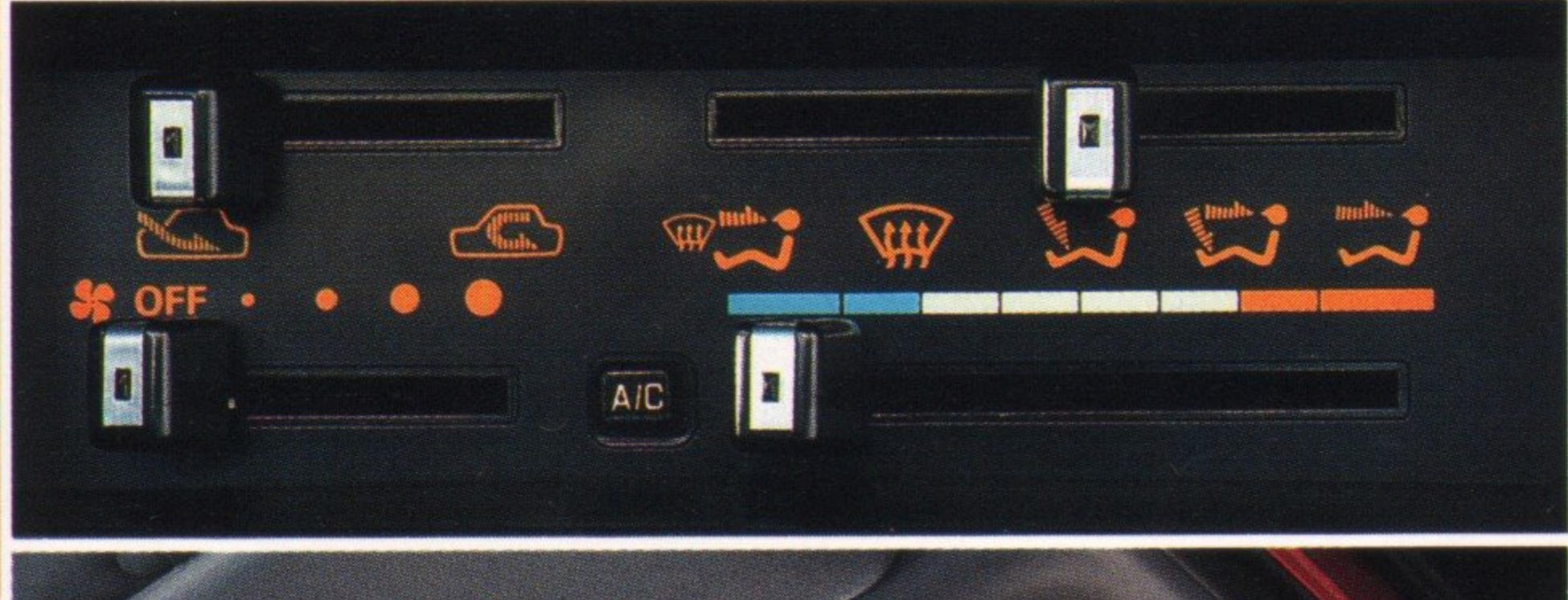
This instrument panel has a layout that reads incredibly fast. Yet, it's totally complete. The information is all there. Big, bold and up front.

Straight ahead, an 8,000 RPM tachometer, speedometer, resettable tripmeter and oil pressure gauge are set in a fast-read instrument cluster with warning lights that monitor nine vital functions. Of course, there's a turbo boost gauge on the Cordia Turbo (Voltmeter on Cordia L).

On the steering column you'll find dual stalk mounted controls for turn signals, variable intermittent windshield wipers/washer, Halogen headlights switch and cruise control. And time is digitally displayed on an LCD Quartz clock.

For entertainment, Cordia comes with a five speaker, electronically tuned AM/FM stereo cassette deck with Dolby® noise reduction. Turn it on and discover at once what instant gratification is all about.

C O R D I A F E A T U R E S



Improve Your View From The Rear
When the weather gets nasty, you'll be glad your rear window wiper/washer optional on the Cordia L and standard on the Cordia Turbo, and electric defroster is at work.

Easy Opening
The power to open and close windows at the touch of a button is your option with power windows on Cordia Turbo.

Unmatched Music
Boogie down the road with the standard five speaker, electronically tuned AM/FM/MPX Stereo/Cassette with Dolby® noise reduction, auto-reverse, and SEEK control.

Cool Aid
Put summer heat on ice with Cordia's optional dual bi-level, climate control air conditioning.

Show Time
Let the sun, stars and moon put on a show with our optional sunroof.

Shift Into Easy
You'll always be driving easy with the Cordia L's available ELC™ 3-speed automatic transmission. Its microprocessor computer monitors engine speed, throttle position and coolant temperature to help maximize fuel efficiency.*

Five Speed Perfection
This manual overdrive transmission is as smooth as silk through all five gears.

*See EPA mileage figures in specifications section.

The Great Cover-Up
Behind the rear seats, there's room to carry loads, and a rear cargo cover to keep them out of sight.

Deep Pockets
Stow away loose things like maps, books and sun glasses in these deep, side door pockets.

Measure the Power
For peak performance and precise shifting, measure your RPMs with Cordia's sporty tachometer.

Key Operation
Open this locking fuel filler door from inside, or use the key and do it from the outside.

Keep the Road on the Road
Keep dirt, stones and mud where they belong with Cordia Turbo's styled Rear Mudguards.

Diamond CareSM... Our Commitment to Quality.
Diamond CareSM Mitsubishi's comprehensive new vehicle delivery service program, ensures that your new Mitsubishi vehicle is thoroughly prepared, inspected and its features explained before you drive off. We even make sure that the gas tank is full before you leave. And Diamond Care does not end when you leave the dealership. After your first 1,000 miles, you are invited to return to have any problem caused by normal vehicle use taken care of absolutely free.

S P E C I F I C A T I O N S

Features & Options

	L	Turbo
MECHANICAL		
2.0-liter, 4-cylinder engine	S	-
1.8-liter, 116-hp turbocharged engine	-	S
ECI™ electronic fuel injection	-	S
Water-cooled turbine bearing housing	-	S
Dual Engine Stabilizers™	S	S
Automatic valve lash adjusters	S	S
Automatic spark advance	S	S
Electronic ignition	S	S
Exhaust system, stainless steel	S	S
5-speed manual overdrive transmission	S	S
3-speed ELC™ automatic transmission	O	-
Independent suspension, front and rear	S	S
Stabilizer bar, front and rear	S	S
Performance-tuned suspension	S	S
Variable boost power-assisted rack and pinion steering	S	S
Power-assisted vented front disc brakes	S	S
Self-adjusting rear drum brakes	S	S
Sealed brake fluid reservoir	S	S
Maintenance-free battery	S	S
Diamond Care SM	S	S
12-month/12,000-mile New Car Limited Warranty*	S	S
36-month/50,000-mile Powertrain Limited Warranty*	S	S
36-month/36,000-mile Electronics Limited Warranty*	S	S
5-year Anti-Corrosion Perforation Limited Warranty*	S	S
INSTRUMENTATION & CONTROLS		
Tachometer, resettable tripmeter	S	S
Coolant temperature and oil pressure gauges	S	S
Voltmeter	S	-
Turbo boost gauge	-	S
Digital quartz clock	S	S
Warning lights: Brakes, Battery charge, Door/hatch ajar, Low fuel, Seatbelt, Cruise control "on"	S	S
Electronically tuned AM/FM stereo + cassette w/5 speakers	S	S
Full-feature cruise control	O	S
Power windows	-	O
Automatic-off headlamp system	S	S
SEATING & TRIM		
Sports type reclining bucket seats w/see-through, adjustable headrests	S	S
Velour seat material	S	S
Walk-in passenger seat release	S	S
Split fold-down rear seat	S	S
Cut pile carpeting	S	S
Rear cargo cover, detachable	S	S
Cloth insert door trim w/carpeted lower section	S	S
Door map pockets	S	S
Large front armrests	S	S

	L	Turbo
COMFORT & CONVENIENCE		
Air conditioning	O	O
Dual bi-level heating/ventilation system with 4-speed fan	S	S
Remote hatch, fuel filler, hood openers	S	S
Height adjustable steering column	S	S
Leather-wrapped steering wheel	-	S
2-speed windshield wiper/washer	S	S
Variable intermittent wiper control	S	S
Rear window wiper/washer	O	S
Electric rear window defroster	S	S
Side window defoggers	S	S
Day/night rearview mirror	S	S
Passenger-side visor vanity mirror	S	S
Large center console	S	S
Passenger assist grips, front and rear	S	S
Illuminated cigarette lighter, front ashtray	S	S
Cargo area courtesy light	S	S
VISIBILITY		
Tinted glass	S	S
Dark upper windshield band	-	S
Manual remote control dual mirrors, color-keyed	S	S
Passenger-side convex mirror	S	S
Tilt-up, lift-off tinted sunroof w/storage bag	O	O
Composite halogen headlamps	S	S
EXTERIOR		
Air dam extension, color-keyed	S	S
Rear spoiler, color-keyed	S	S
Side sill extensions, color-keyed	S	S
Bumpers, color-keyed	S	S
Fixed-length whip antenna	S	S
Locking fuel filler door w/remote release	S	S
Body color grille w/black insert	S	S
Bodyside moldings	S	S
Stone guards, color-keyed	S	S
Rear mudguards, color-keyed	-	S
WHEELS & TIRES		
Full wheel covers w/14-in. styled steel wheels	S	-
Turbine-style 14-in. aluminum alloy wheels	-	S
195/60HR14 performance radial tires, BSW	S	S
EXTERNAL COLORS/INTERIOR TRIM		
Summit White/Black	S	S
Rio Red/Black	S	S
Selbia Black/Black	S	S
Geneva Green/Black	S	-
Ascot Silver/Black	S	-

Technical Specifications

	Cordia L	Cordia Turbo
ENGINE		
Model No. and Type	G63B, SOHC, 4-cylinder inline	G62B, SOHC, 4-cylinder inline w/turbocharger
Bore & Stroke (in./mm.)	3.35 x 3.46/85.0 x 88.0	3.17 x 3.46/80.6 x 88.0
Displacement (cu. in./c.c.)	122/1997	109/1795
Compression Ratio	8.5:1	7.5:1
Horsepower @ rpm (BHP)	88 @ 5000	116 @ 5500
Torque @ rpm (lb-ft)	108 @ 3500	129 @ 3000
Induction Type	1-2V carburetor	Electronic fuel injection
Emission Control System	EGR, air induction, 3-way catalyst w/feedback control	
CLUTCH		
Clutch Type	Single-plate, dry	
Diameter (in.)	7.9	
TRANSMISSION RATIOS		
5-Speed Manual Overdrive	1st/4.226, 2nd/2.365, 3rd/1.467, 4th/1.105, 5th/0.855, Rev/4.109	
3-Speed Automatic	1st/2.846, 2nd/1.581, 3rd/1.000, Rev/2.176	
Final Drive Ratios	3.187	3.466
SUSPENSION		
Front Type	Independent with struts, coil springs, 1.02-in. stabilizer bar	
Rear Type	Independent with trailing arms, coil springs, telescopic shock absorbers, 0.57-in. stabilizer bar	
DIMENSIONS		
Chassis/Body Construction	All steel unibody	
Wheelbase (in./mm.)	96.3/2445	
Overall Length (in./mm.)	173.0/4395	
Overall Width (in./mm.)	65.4/1660	
Overall Height (in./mm.)	49.4/1255	
Tread Width (in./mm.)—Front	55.5/1410	
—Rear	54.1/1375	
Head Room (in./mm.)—Front	36.8/935	
—Rear	35.6/905	
Shoulder Room (in./mm.)—Front	52.8/1340	
—Rear	50.0/1270	
Hip Room (in./mm.)—Front	53.5/1360	
—Rear	52.0/1320	
Leg Room (in./mm.)—Front	41.3/1050	
—Rear	30.3/770	
Cargo Capacity (cu. ft.) EPA Index 13.6		

	Cordia L	Cordia Turbo	
WEIGHTS			
Curb Weight (lbs/kg.)	5M-2381/1080 3A-2414/1095	5M-2458/1115	
STEERING			
Type	Rack and pinion, variable boost power-assisted		
Overall Steering Ratio	16.8:1		
Turning Circle, Curb to Curb (ft./m.)	32.2/9.8		
BRAKES			
Front	Vented disc		
Rear	Self-adjusting drum		
Diameter Front/Rear (in.)	9.5/8.0	10.4/8.0	
Total Brake Swept Area (sq. in.)	246	268	
ELECTRICAL SYSTEM			
Battery	12-volt, maintenance-free		
Ignition System	Electronic		
Alternator Rating (amps)	65		
FUEL SYSTEM			
Type Fuel Required	Unleaded (RON 91)		
Fuel Pump Type	Mechanical	Electronic	
Fuel Tank Capacity (U.S. gal.)	12.8		
WHEEL & TIRES			
Wheel Size and Type	14 x 5.5JJ stamped steel w/full cover	14 x 5.5JJ turbine-style aluminum alloy	
Tire Size and Type	195/60HR14 Yokohama high performance steel belted radials		
Spare Tire Size and Type	Tempa-type		
FUEL ECONOMY			
Model	Engine/Transmission	Federal Est. City	Federal Est. Highway
Cordia L	2.0L/5M	24**	31**
Cordia L	2.0L/3A	23**	25**
Cordia Turbo	1.8L/5M	22**	28**

S = Standard O = Optional - = Not Available

* = For complete details, ask your salesperson for a copy of the limited warranty.

**These figures are estimates only, provided by the U.S. Environmental Protection Agency (EPA).

Technical data, features, options and other equipment shown in this catalog are based on the latest available information at the time of printing and are subject to change without notice. Some vehicles are shown with optional equipment. For further information on the additional options and accessories, contact your Mitsubishi Motors Dealer. Availability at dealers of vehicles with specific features may vary. Headlights, parking lights and fog lights on vehicles lighted for illustration purposes only.

Call 1-800-447-4700 for your nearest Mitsubishi Motors Dealer.

Part #MMSA-ADV-5035. Litho in U.S.A. ©1987 Mitsubishi Motor Sales of America, Inc.



Mitsubishi. Suddenly, the obvious choice.

