

FORD KUGA



Feel the difference

Feel the difference

In a world of me-too products, the latest Fords really stand out. Award-winning design and amazing technology can be yours across the range. Take a test drive and feel the difference.

2-7

Ford kinetic Design

Ford kinetic Design is the reason why our vehicles look more exciting than ever before. Bold, dynamic lines that create energy in motion.

8-11

Quality

We design and build your Ford to feel as good after many years of service as it did the day you picked it up. And to drive just as beautifully, too.



12-13
Green

Using advanced Ford ECOnetic Technology, we're committed to creating vehicles with improved fuel economy, reduced CO₂ emissions and a lower overall cost of ownership.



9

Safe

Ford's Intelligent Protection System uses sophisticated technology designed to help prevent an accident and, if one should happen, to protect you.



14-15
Smart

Cars that park themselves, windscreen wipers that know when it's raining – just some of the many clever solutions from Ford that make life a little easier.



16-23
Choose your Ford Kuga

- Zetec
- Titanium
- Titanium X

24-25
The range

26-33
Add those extra touches

- Wheels
- Technology
- Transportation
- Personalisation

34
Ownership

35-39
Specifying your Ford Kuga

40-41
Colour and trim





You either have it, or you don't

A quality that's hard to define, but instantly recognisable.

Image below shows Kuga Titanium with MicaStone Metallic paint, Appearance pack, 18" Alloy wheels (all optional at extra cost).





It brings you together

Who can defy the laws of attraction?

Image below shows Kuga Titanium X with Micastone Metallic paint, Appearance pack, front and rear park assist. (all optional at extra cost)





It sets you apart

Everything about you is a reflection of your inner values.





9

Let them look

Some admire your choices. Perhaps others secretly envy them.





The attention to detail which has been lavished on the Ford Kuga is immediately evident, from the exterior finish to the quality of the interior. Ford has engineered every single component for dependability, safety and strength with one objective clearly in mind; quality that's built to last.

Precision built with the future in mind



Brakes built to perform

The Ford Kuga's braking system is electronically tuned to meet the demands of on- and off-road driving conditions. Several technologies work in unison, such as ABS with electronic brake-force distribution which balances the braking force across all wheels for safe, stable braking. And there's Emergency Brake Assist, which delivers extra brake power when you need it most.

Bi-Xenon Front Lighting System

With a special jewel-like design, these headlights not only make sure you're seen by other drivers but also illuminate any hazards more clearly than conventional headlights (Standard on Titanium X).



Safety features

Ford's Intelligent Protection System comes as standard on the Ford Kuga. It monitors the readiness of its comprehensive airbag systems as well as its Electronic Stability Programme, Traction Control System and Emergency Brake Assist.

At home, wherever you drive

Ford Kuga's all-wheel drive system constantly and intelligently monitors your driving environment so you don't have to; optimising traction, fuel economy and ride, whatever the surface, to ensure that power goes to the wheels that can use it best.

CO₂ emissions from only 154 g/km

All the Kuga style with a lower emission diesel choice on 2-wheel drive models.



The Ford Kuga possesses the renowned driving quality you would expect from the latest generation of Ford cars. Its Control Blade independent rear suspension delivers an on-road experience that is second to none in its class. Its off-road capability is equally impressive. The intelligent all-wheel drive system adjusts automatically to give you optimum control in all conditions.

That Ford feeling



Intelligent all-wheel drive

Tested in the harsh conditions of a Swedish winter, the Ford Kuga's intelligent all-wheel drive system uses proven Haldex 4 technology to react instantly to a change in road conditions. Traction is maintained by automatically applying power to the wheels that need it most, ensuring you stay in control whatever the road throws at you.



Feel the power, not the shift

The perfect combination between the convenience of an automatic and the smoothness and driving performance normally associated with a manual. Ford PowerShift 6-speed automatic transmission cleverly selects the next appropriate gear at exactly the right moment, delivering lightning-fast gear changes with no disruption to the flow of power.

Note PowerShift gearshift knob insert design may vary slightly from that shown.

Power to spare

Ford Kuga's acclaimed 140PS 2.0 TDCi diesel engine has been praised for its refinement, efficiency and responsiveness – and now the 163PS Titanium offers even more impressive performance. Both are available with the option of our advanced PowerShift 6-speed twin clutch automatic transmission.



Ford ECOnetic Technology is designed to reduce your cost of ownership through improved fuel economy and lower CO₂ emissions, without any compromise on style or driving quality. Much of this technology is brought together in our ECOnetic models, which deliver some of the lowest fuel consumption and CO₂ emissions in the Ford range. In the near future our ECOnetic Technology will expand to include electric and hybrid-electric vehicles, biofuel-capable vehicles, plug-in hybrids and hydrogen fuel cell-powered vehicles.

What can Ford ECOnetic Technology do for you?



Ford ECOnetic Technology

- Ford EcoBoost fuel-efficient petrol engines (see right)
- Ford Duratorq TDCi advanced diesel engines – provide exceptional fuel economy and low CO₂ emissions
- Ford PowerShift dual clutch automatic transmission – combines the efficiency of manual transmission with the convenience of a conventional automatic
- Ford Auto-Start-Stop (see right)
- Ford Smart Regenerative Charging – charges the battery every time you brake
- Ford Electric Power-Assisted Steering – a more efficient system that uses less engine power
- Active Grille Shutter – improves aerodynamics and lowers fuel consumption
- Ford Eco Mode driver information system – shows you when you're achieving optimum fuel efficiency
- Shift Indicator – advises you when to change gear for maximum fuel efficiency

Ford EcoBoost

With direct petrol injection, turbocharging and variable valve timing, Ford EcoBoost engines deliver power and torque consistent with larger displacement engines. For example, the 1.6 160 PS EcoBoost engine in Ford S-MAX has more power than the 2.0 Duratec engine, and yet it achieves around 15% better fuel economy and 13% lower CO₂ emissions.



Ford Auto-Start-Stop

When your vehicle is idling at a standstill, the engine automatically shuts down to save fuel consumption. When you want to drive off, the engine immediately restarts.



Electric and Hybrid vehicles

Our electrically-powered vehicles will produce zero emissions. Rechargeable through wall outlets and targeted to get up to 100 miles per charge, they'll be ideal for a daily commute and trips around town. In addition, two next-generation hybrid models are under development.



Working for a cleaner tomorrow

At Ford, we've been quietly and consistently reducing our impact on the environment. Here are just a few headlines:

- Since 2000, we've reduced manufacturing plant energy consumption by over 27% and CO₂ emissions by 31% worldwide
- Between 2003 and 2008, Ford reduced water consumption in its plants across Europe by 40%
- Solar/photovoltaic panels on the roof of our Bridgend engine plant in the UK generate enough power to light an area of around 10,000 square metres
- Almost 300 parts used in European Ford vehicles are made from recycled non-metallic materials – potentially avoiding 17,000 tonnes of waste going to landfill sites every year

Two 85m high wind turbines provide the equivalent electricity needed to power Ford's Dagenham Diesel Centre. With a combined maximum output of 3.6MW, they generate over 6.7million KWh of electricity every year, enough power equivalent to that required to run the plant.

Our Cologne plant utilises hydro-electric power from Norway and Sweden. This reduces CO₂ emissions by 190,000 tonnes a year. Shipping their finished vehicles on Rhine river barges means fewer truck journeys and less fuel consumed to further reduce CO₂ emissions.



If you wish to know more, logon to:
ford.com/go/sustainability



Power converter
Provides direct power for laptops and all your essential gadgets (Option).



The new Ford Kuga is packed with smart technology. You'll find yourself smiling as it lets you do things faster, more effectively and with style.

That's clever



Ford Power
A standard feature on the Ford Kuga – just press and go.

Capless refuelling
No dirty fuel caps to touch. Plus a unique safeguard ensures nobody can accidentally fill up with the wrong fuel.



Mini tailgate
When you only have a small load to put in or get out, open the mini tailgate – it's quicker and more convenient.



Rear-view camera

Go into reverse and the rear-view camera comes on in the navigation display, allowing you to see objects behind your car for easy manoeuvring. Available with the optional Touchscreen Navigation PLUS system (see top image opposite, available on Titanium and Titanium X only).

Main image opposite shows Kuga Zetec with Moon dust Silver Metallic paint and Appearance pack (all optional at extra cost).



Zetec



Image above shows Kuga Zetec with Panther Black Metallic paint (optional).

The Ford Kuga Zetec brings you a blend of stunning design, outstanding driving quality and sheer capability unmatched in its class, plus a generous level of specification.

Features

- Intelligent All Wheel Drive on 4x4 versions
- 17" 5x2-spoke alloy wheels
- Keyless Start with 'Ford Power' button
- Manual air conditioning
- Quickclear heated windscreen
- Ford radio/CD with six speakers and remote audio controls
- Mini tailgate
- Thatcham Category 1 Alarm
- Leather steering wheel
- Sports front seats
- Trip computer
- Power heated door mirrors with built-in indicator
- Front fog lights
- Portable audio device connector
- Front and rear electric windows
- Global opening and closing
- Remote control door entry
- Driver's seat lumbar adjust
- Driver's seat manual height adjust
- One-touch opening tonneau cover
- Front and rear curtain airbags

Sports-style front seats

Provide exceptional support and comfort. (Standard)

Front fog lights

With chrome trim rings. (Standard)

Power heated door mirrors

With an integrated side indicator and puddle light (Standard).

'Ford Power' starter button

No key required. Just press and drive (Standard).

Manual air conditioning

Easy controls for fast cooling (Standard).

MP3 connection

Play music directly from your MP3 player through the Ford Kuga's stereo (Standard).





Titanium



Image above shows Kuga Titanium with MicaStone Metallic paint (optional).

Get yourself behind the wheel of the Ford Kuga Titanium and you're surrounded by contemporary luxury and technical innovation.

Additional to Zetec

- Partial leather trim
- Dual electronic automatic temperature control (DEATC)
- Sony DAB audio system
- Cruise control
- Leather gearshift knob
- Automatic rain-sensing wipers
- Automatic headlights
- Auto-dimming rear-view mirror
- Rear seat folding centre armrest
- Footwell lights
- Passenger seat lumbar adjust
- Passenger seat manual height adjust
- Front carpet mats

Automatic headlights

Switch on automatically when daylight levels drop (standard).

Cruise control

With fingertip controls. (Standard)

Rain-sensing wipers

Activate automatically when the system senses rain. (Standard)

17" alloy wheels

(Standard)

Leather gearshift knob

A touch of luxury every time you change gear. (Standard)

Auto-dimming rear-view mirror

A sensor detects harsh lights behind you and dims the mirror. (Standard)



Titanium X



Combining a bold attitude with the very latest in technology and luxury, Ford Kuga Titanium X is an invigorating experience.

Additional to Titanium

- 18" 5-spoke alloy wheels
- Leather seat facings
- Projector-style bi-xenon headlights
- Bi-Xenon headlights and LED day running lights
- Large body colour rear spoiler
- Power adjust drivers seat
- Heated front seats
- Panorama roof
- Bluetooth® Voice control and USB connectivity

Image above shows Kuga TitaniumX with Panther Black Metallic Paint (optional)

Image opposite shows Touchscreen Navigation Plus system (optional)

Leather seat facings
(Standard)

Electrically-operated and heated front seats
(Standard)

Panorama roof
(Standard)

Bluetooth® Voice Control and USB connector for MP3
(Standard)

Bi-xenon headlights and day running lights
(Standard)

18" alloy wheels
(Standard)





The range

Zetec

Standard features

- Ford KeyFree System with Ford Power Starter Button
- Sports-style front seats
- Mini tailgate
- Leather steering wheel
- Manual air conditioning
- Trip computer
- Power heated door mirrors with built-in indicator
- Front fog lights
- Portable audio device connector
- Window auto close
- Remote control door entry
- Driver's seat lumbar adjust
- Driver's seat manual height adjust
- Flexible tonneau cover
- Front and rear curtain airbags
- 17" alloy wheels
- ISOFIX provision

Engines

- **Diesel**
 - 2.0 Duratorq TDCi (140 PS) 4x2/4x4
 - 2.0 Duratorq TDCi (163 PS) 4x4

Titanium

Additional to Zetec

- Partial leather trim
- 17" alloy wheels
- Leather gearshift knob
- Automatic rain-sensing wipers
- Automatic headlight control
- Auto-dimming rear-view mirror
- Footwell lights
- Cruise control
- Passenger seat lumbar adjust
- Passenger seat manual height adjust

Engines

- **Diesel**
 - 2.0 Duratorq TDCi (140 PS) 4x2/4x4
 - 2.0 Duratorq TDCi (163 PS) 4x4

Titanium X

Additional to Titanium

- 18" 5-spoke alloy wheels
- Leather seat facings
- Heated front seats
- Power adjust drivers seat
- Projector-style bi-xenon headlights
- LED day running lights
- Large body colour rear spoiler
- Panorama roof
- Bluetooth® Voice control and USB connectivity

Engines

- **Petrol**
 - 2.5 Duratec (200 PS)
- **Diesel**
 - 2.0 Duratorq TDCi (140 PS) 4x2/4x4
 - 2.0 Duratorq TDCi (163 PS) 4x4



Wheel design

We've reinvented the wheel (almost). New designs have been specially developed to enhance the powerful design of the Ford Kuga.



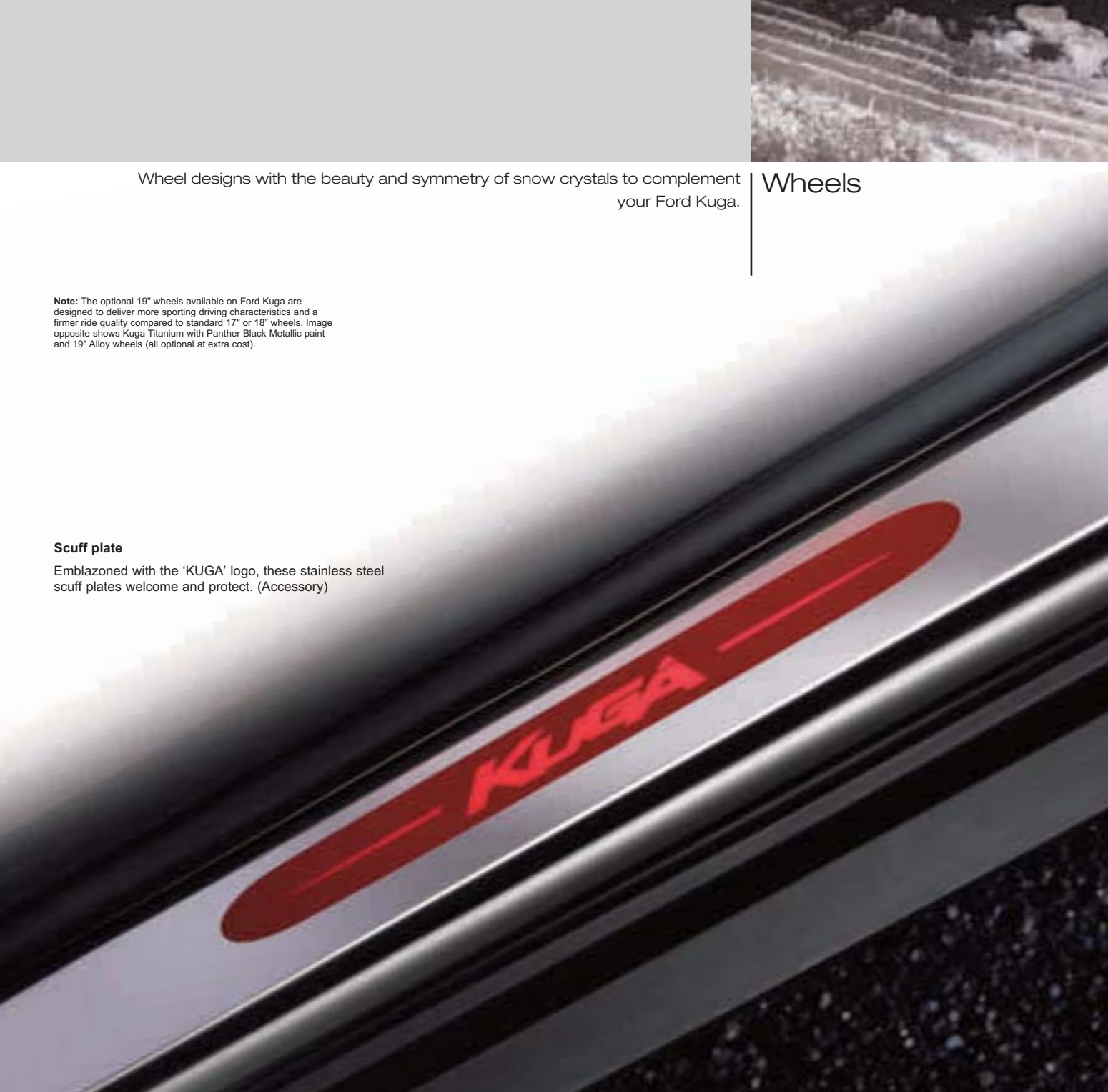
Wheel designs with the beauty and symmetry of snow crystals to complement your Ford Kuga.

Wheels

Note: The optional 19" wheels available on Ford Kuga are designed to deliver more sporting driving characteristics and a firmer ride quality compared to standard 17" or 18" wheels. Image opposite shows Kuga Titanium with Panther Black Metallic paint and 19" Alloy wheels (all optional at extra cost).

Scuff plate

Emblazoned with the 'KUGA' logo, these stainless steel scuff plates welcome and protect. (Accessory)



Alloy wheel – 17" 5x2-spoke
(Standard on Zetec and accessory)

Alloy wheel – 17" 5x2-spoke
(Standard on Titanium and accessory)

Alloy wheel – 18" 5-spoke
(Standard on Titanium X and accessory)

Alloy wheel – 19" 5-spoke
(Option and accessory)



Sony DAB audio systems

Sony DAB audio systems provide improved reception and sound quality, simple easy-to-use tuning and access to an extensive range of radio stations. (See specifications table for availability)

Keyless Entry

Lock and unlock your Ford Kuga without a conventional key. (Option available as part of the Titanium Convenience pack)

Your favourite music can make a journey. The Ford Kuga offers you a wide choice of sound systems, some with built-in navigation.

Technology



Touchscreen Navigation PLUS system with 7" colour touchscreen and rear-view camera (Option on Titanium and Titanium X only)

Premium quality audio, navigation and information system. Features a 7" colour touchscreen for control of the radio/CD, navigation system, Dual-zone Electronic Automatic Temperature Control (DEATC) and mobile phone.

Select reverse gear and the rear-view camera comes on automatically in the navigation display, allowing you to see objects behind your car. Special guidance graphics indicate the width and centre line of the car, based on the steering angle, for safer and easier manoeuvring.

Ford 6000 radio/CD

This stereo radio/CD player features 'Keycode' anti-theft coding, RDS EON, 24 programmable stations and six speakers. Remote control functionality via the left steering wheel toggle switch. Includes AUX connection for external music devices. (Standard on Zetec)

Touchscreen Navigation system

7" colour touchscreen, Bluetooth® with Voice Control System, iPod® USB connector, MP3 compatibility, remote audio controls. (Option)

Portable Navigation

Portable Navigation systems are now available as an accessory. Please contact your Ford dealer for full details (Accessory)

Note The Bluetooth® word mark and logos are owned by the Bluetooth SIG, Inc. and any use of such marks by Ford Motor Company Limited and its associated companies is under licence.

Note iPod is a trademark of Apple Inc.



Bluetooth® audio streaming

Leave your music player in your pocket and Ford Kuga can still play your favourite tunes. Select artists, albums, tracks or genres, all at the sound of your voice. With no cables or downloads to worry about, it's so simple with the built-in Bluetooth® Voice Control System. (Standard on Sony DAB and Touchscreen navigation systems)



Getting you to your destination quickly, safely and economically

When it comes to navigation, not only can the system find the shortest and fastest way to your destination, but with 'eco' route it can find the most fuel-efficient way too. And, so you don't inadvertently drive too fast, the system can also display the legal speed limit to help keep you on the right side of the law. (Standard on Touchscreen navigation systems)



Thule 'Xpedition' carrier basket

A versatile basket platform for a variety of loads.
Made of lightweight, robust aluminium. (Accessory)



The Ford Kuga's generous storage capacity can be expanded with a range of transport accessories.

Transportation**Britax Römer child seat**

Various seats available for all ages – also available with ISOFIX. Removable and washable cover. (Accessory)

**'Thule' bike carrier**

Specially designed to carry modern bikes with frames up to 80 mm in diameter. Also features integral locks to keep bikes safe and secure. (Accessory)

Thule ski and snowboard carrier
Lockable carrier used for your precious ski gear. (Accessory)

**Lockable crossbars**

Made of solid aluminium, these bars are the base for all attachments such as roof boxes, bike carriers, ski racks, etc. (Accessory)

Thule roof box 'Pacific 100'

Available in various sizes. (Accessory)

**Aluminium roof rails**

Enhance versatility and styling. (Option and accessory)

Premium bumper protector

Stainless steel appearance, protects the bumper from luggage scuffs. Transparent protection foil also available. (Accessory)

**Waeco coolbox**

High-performance 35-litre capacity box cools down to a minimum of 1°C. Integrated 230V AC connector. (Accessory)

Detachable tow bar

Also available as fixed version. (Option and accessory)

**Loadspace liner**

Extra solid liner with 100 mm lip height, ideal for transporting wet or dirty items. (Accessory)

"This brochure shows both original Ford accessories as well as a range of carefully selected products from third party suppliers, which are identified under that third party supplier's brand name. Please note that third party supplier branded accessories do not come with a Ford warranty but are covered by the third party suppliers own warranty, the details of which can be obtained from your Ford Dealer."

Thule sailboard carrier

Developed and tested by surfers for surfers. Holds one board and two masts. (Accessory)

**Thule 'Ranger 90' foldable roof box**

A waterproof soft box that is easy to mount, load and unload. Folds down compactly when not in use. (Accessory)

**Lockable crossbars**

Made of solid aluminium, these bars form the base for all attachments such as roof boxes, bike carriers, ski racks, etc. (Accessory)



Panoramic roof

Brings more light and a feeling of extra space to the interior. Includes two sunblinds and infrared reflective coating. (Standard on Titanium X)



Add that final touch of luxury, comfort and convenience from a selection of premium designed features.

Personalisation**Power-fold door mirrors**

Door mirrors can retract out of harm's way when parked. Also useful when squeezing through tight spaces. Includes built-in puddle lights. (Option as part of Convenience Packs)

Bluetooth® voice control and USB connector for MP3

Connects to the centre console and offers USB port, auxiliary jack and MP3 connection plus Bluetooth® voice control. When not in use, it can be hidden away in the stowage box. (Standard on Titanium X and option)

Note The Bluetooth® word mark and logos are owned by the Bluetooth SIG, Inc. and any use of such marks by Ford Motor Company Limited and its associated companies is under licence.

Parking distance sensors

Audible warning helps you judge distance between your car and an obstacle. (Option, also available as part of Convenience Packs)



Premium velour mats
Perfectly complements your chosen interior, with nubuck surround and aluminium-effect 'KUGA' logo. Driver's mat is fixed to prevent slippage. (Accessory)



Making life easy

Our range of finance, insurance, service and assistance options is designed with just one thing in mind – making life easy for you.

Ford Credit

When it comes to financing your vehicle, our size and expertise means we're well placed to provide you with a range of finance plans. An application for finance is straightforward and you'll usually get a decision within 15 minutes.

So what can your Ford Dealer provide?

Ford Options offers the flexibility to renew your Ford at anytime during your agreement - you're in complete control. At the end of the agreement you can Renew, Return or Retain your Ford.

Ford Options Cashplan provides all of the flexibility of Ford Options whilst freeing you from the need to make regular payments.

Ford Acquire is ideal if you're a private or business user who wants a traditional and convenient financing plan to own your vehicle. Simply put down a deposit, pay the remainder, plus interest, over an agreed period and the vehicle becomes yours.

Ford Lease* provides simple, tailored funding solutions for your business, whatever the size. Business users only.

Ford Insure** is our comprehensive motor insurance product, designed specifically for Ford drivers.

For more information on our finance products please visit ford.co.uk.

Finance subject to status. Guarantees/indemnities may be required, Freepost Ford Credit.

*Ford Lease is provided by ALD Automotive Ltd, trading as Ford Lease, Oakwood Park, Lodge Causeway, Fishponds, Bristol, BS16 3JA. ALD Automotive is registered in England No. 987418. For the purposes of the Data Protection Act 1998 the data controllers in relation to any information you supply are Ford Motor Company Limited, FCE Bank Plc and ALD Automotive. Finance subject to status. Guarantees and indemnities may be required. ALD Automotive is authorised and regulated by the Financial Services Authority.

**Ford Insure is underwritten and administered by Royal & Sun Alliance Insurance plc, which is authorised and regulated by the Financial Services Authority. FCE Bank plc is authorised and regulated by the Financial Services Authority and acts as an insurance intermediary in relation to Ford Insure. In relation to this same product, Ford Motor Company Limited is an appointed representative of FCE Bank plc. Ford Motor Company Limited acts as an insurance intermediary. Calls may be recorded and monitored.

Configure your Ford & apply for finance online

Choose and change bodystyle, colour, trim and options, and instantly see how your new Ford will look from many angles. You can even get a price and finance quotation for your configured car and apply for finance with Ford Credit online.



Services

Ford Protect

Your new Ford is protected by a 3-year/60,000-mile Ford Protect Classic Plan Warranty, and comes with Ford Assistance roadside cover throughout the UK and Europe for 1 year. You can also upgrade to a Ford Protect Premium Plan, giving you the option of scheduled servicing and extended Ford Assistance.

Ford Service

Like any vehicle, your new Ford needs servicing regularly to keep it in the best condition and to maintain its value. The Ford authorised repairer network is independently quality checked to ensure the highest standards of workmanship are maintained. Ford has the largest repairer network in the UK, and uses Ford-trained technicians, Ford-specific tools and the latest computerised diagnostic equipment specifically for your Ford.

Ford Accident Repair Centres

Should your Ford require accident repair, an approved Ford Accident Repair Centre is the best place to return your vehicle to its pre-accident condition. Repairers displaying the Ford Accident Repair Centre sign meet the rigorous customer service, technical and quality standards demanded by Ford. Ford trained technicians, the latest repair equipment and the use of original parts mean that the future safety and value of your vehicle are assured.

Contacts

Ford Customer Relationship Centre

In the unlikely event that your Ford Dealer can't help you or if you need to speak to us directly, call 0845 841 1111 at local rates.

Ford Rental - local service nationwide

Car and van rental from our latest model range. Contact your local Ford Dealer for more information.

Ford Mobility

Our dedicated care centre provides free information on all motoring and mobility issues, including special offers for HRDLA and Motability recipients.

Call us on 0845 6040019 at local rates.

Exterior equipment

	Zetec	Titanium	Titanium X
Design features			
Door mirrors – Body colour housing, heated, electric operation, integrated side indicator	●	●	●
Door mirrors – Puddle lights	●	●	●
Door mirrors – Electrically foldable	□	□	○
Front upper grille – Chrome surround	●	●	●
Front lower grille – Moondust Silver colour surround	●	●	●
Front fog lights	●	●	●
Privacy glass – Dark glass to the rear windows	□	□	□
Green tinted glass	●	●	●
Rear spoiler – Body colour	●	●	●
Roof rails – Aluminium finish	□	□	□
Towbar – Detachable (includes Trailer Stability Function)	○	○	○
Wheels			
Alloys – 17"x7½", 5x2-spoke, 235/55 tyres	●	●	-
Alloys – 18"x7½", 5-spoke, 235/50 tyres	○	○	●
Alloys – 19"x8", 5x2-spoke, 235/45 tyres	-	○	○
Spare – Mini steel	●	●	●
Locking wheels nuts	●	●	●
Convenience features			
Ford Easy-Fuel capless refuelling system	●	●	●
Headlights – Automatic on/off (includes automatic wipers with rain sensor and auto-dimming rear-view mirror)	-	●	●
Headlights – Bi-xenon, with automatic levelling and jet wash	-	-	●
Headlight courtesy delay	●	●	●
Panoramic roof – Fixed	-	-	●
Parking distance sensors – Front and rear	○/□	○/□	○/□
Tailgate wash/wipe	●	●	●
Wipers – Front, with 6-speed interval settings	●	-	-
Wipers – Front, automatic wipe with rain sensor and variable sensitivity adjustment	-	●	●
Quickclear – Heated windscreen, with heated washer jets	●	●	●
Option Packs			
Zetec Convenience Pack – Cruise control, front and rear parking distance sensors and electrically foldable door mirrors	○	-	-
Titanium Convenience Pack – Keyless entry, front and rear parking distance sensors and electrically foldable door mirrors	-	○	○
Zetec Appearance Pack – Privacy glass and aluminium finish roof rails	○	-	-
Titanium Appearance Pack – Privacy glass and aluminium finish roof rails	-	○	○

● = Standard, ○ = Optional, at extra cost, □ = Part of option pack, at extra cost.

Interior equipment

	Zetec	Titanium	Titanium X
Design features			
Door lever – Aluminium	●	●	●
Floor mats – Front, carpet	–	●	●
Gearshift knob – Leather	●	●	●
Scuff plates – Front, Moondust Silver colour	●	●	●
Steering wheel – 4-spoke, leather trimmed with silver accents	●	●	●
Steering column – Reach and rake adjustable	●	●	●
Audio and communication systems			
Ford 6000 Radio/CD – 6 speakers, remote audio controls	●	–	–
Sony DAB Radio/CD with 8 premium speakers, remote audio controls, MP3 compatible (with Bluetooth® and USB/iPod® connectivity port on Zetec)	○	●	●
Touchscreen Navigation system with Bluetooth® & USB with Radio/CD – 7" colour touchscreen display, remote audio controls, Bluetooth & voice control, USB connectivity port. Replaces standard specification audio system when ordered.	○	–	–
Touchscreen Navigation PLUS system with Bluetooth® & USB, Rear view camera with Radio/CD – 7" colour touchscreen display, remote audio controls, MP3 compatible. Touchscreen allows control of radio/CD and dual electronic air conditioning; heated front seats and Bluetooth® with USB connectivity port. Replaces standard specification audio system when ordered.	–	○	○
Portable audio device connector	●	●	●
Bluetooth® Hands Free Phone and Voice Control System for the command of audio system, air conditioning and mobile phone (with USB/iPod® connectivity port on Titanium)	○	○	●
USB/iPod® connectivity port. (only available with Bluetooth® and Voice Control System in conjunction with Sony DAB audio and as part of the Touchscreen navigation and Touchscreen navigation PLUS system)	○	○	●
Climate control			
Air conditioning – Manual control	●	–	–
Air conditioning – Dual Electronic Automatic Temperature Control (DEATC)	–	●	●
Convenience features			
'Ford Power' engine start/stop push button	●	●	●
Cruise control	□	●	●
Accessory power socket (12V)	●	●	●
Centre console – Premium, with sliding armrest, additional 12V power socket and large stowage bin	●	●	●
Power converter – 230V pulse charge type, limited to 150W	○	○	○
Courtesy light – For front passengers, overhead with theatre-style dimming; ambient lighting	●	●	●
Courtesy light – Footwell area	–	●	●
Courtesy light – Front and rear reading lights	●	●	●
Stowage pockets – Front seat backs	●	●	●
Stowage unit – Located in upper instrument panel	●	●	●
Variable dimming of instrument cluster and radio screen display	●	●	●
Windows – Electric front and rear with one-touch lowering/closing, 'bounce-back' sensor and global opening/closing	●	●	●
Seats			
Front seats – Sports-style, fabric trim	●	–	–
Front seats – Sports-style, partial leather trim	–	●	–
Front seat – Driver's manual lumbar support adjustment	●	●	●
Front seat – Driver's manual height and fore/aft adjustment	●	●	–
Front seat – Driver's electric height, fore/aft and backrest angle adjustment	–	–	●
Front seat – Passenger's manual fore/aft adjustment	●	–	–
Front seat – Passenger's manual height and fore/aft adjustment (includes manual lumbar support)	–	●	●
Front seats – Heated cushion and seatback, with 5 variable positions	–	–	●
Seats – Leather trimmed	–	–	●
Rear seat – 60/40 split back and cushion	●	●	●
Rear seat – Folding centre armrest, with two integrated cup holders and flip-up stowage	–	●	●
Loadspace			
Accessory power socket (12V) in luggage compartment	●	●	●
Tie-down hooks	●	●	●
Tonneau cover – one touch opening	●	●	●

● = Standard, ○ = Optional, at extra cost, □ = Part of option pack, at extra cost. The Bluetooth® word mark and logos are owned by the Bluetooth SIG, Inc. and any use of such marks by Ford Motor Company Limited and its associated companies is under licence. Other trademarks and trade names are those of their respective owners.

Safety and security

	Zetec	Titanium	Titanium X
Safety			
Intelligent Protection System (IPS)	●	●	●
Anti-lock brakes (ABS) with electronic brake-force distribution (EBD)	●	●	●
Electronic Stability Programme (ESP) with Traction Control (includes Emergency Brake Assist (EBA))	●	●	●
Trailer Stability Function (only when optional Ford detachable tow bar is specified)	●+	●+	●+
Emergency Brake Warning – Automatic activation of all turn indicators when emergency braking is applied	●	●	●
Airbags – Driver's and front passenger's*	●	●	●
Airbags – Front side impact	●	●	●
Airbags – Front and rear curtain	●	●	●
Airbags – Front passenger's de-activation switch (Dealer-fit option)	○	○	○
Seats – ISOFIX mounting provision for child seats (outer seats only)	●	●	●
Deflation Detection System (DDS)	○	○	○
Security			
Remote central double locking	●	●	●
Thatcham CAT 1 approved perimeter and volume sensing alarm	●	●	●
Keyless Entry System – Full hands-free vehicle entry system	–	□	□

● = Standard, ○ = Optional, at extra cost, ●+ = Standard if optional Ford detachable tow bar is specified. *Note: A child seat should never be placed in the front passenger seat when the Ford vehicle is equipped with an operational front passenger's airbag. The safest place for children is properly restrained on the rear seat.

Insurance groups

Engine	Drive	Zetec	Titanium	Titanium X
2.0 Duratorq TDCi 6-Speed Manual (140PS)	4x2 FWD	18E	21E	TBC
2.0 Duratorq TDCi 6-Speed PowerShift Automatic (140PS)	4x4 AWD	18E	–	–
2.0 Duratorq TDCi 6-Speed Manual (140PS)	4x4 AWD	18E	–	–
2.0 Duratorq TDCi 6-Speed PowerShift Automatic (163PS)	4x4 AWD	–	21E	TBC
2.0 Duratorq TDCi 6-Speed Manual (163PS)	4x4 AWD	–	21E	TBC
2.5 Duratec Petrol 6-Speed Manual (200PS)	4x4 AWD	–	–	TBC
2.5 Duratec Petrol 5-Speed Automatic (200PS)	4x4 AWD	–	–	TBC

E = Exceeds security requirement for model concerned and group rating has been reduced. Please refer to www.ford.co.uk for the latest information.

Mechanical features

	Zetec	Titanium	Titanium X
Steering			
Electric Hydraulic Power-Assisted Steering (EHPAS)	●	●	●
Suspension			
Front – Independent with MacPherson struts and anti-roll bar	●	●	●
Rear – Independent Control Blade multi-link system and anti-roll bar	●	●	●

● = Standard.

Fuel and performance data

	Euro	Drive	Maximum power PS (kW)	Torque Nm (Nm with overboost)	CO ₂ emissions (g/km)**	Fuel consumption in L/100 km (mpg)**			Performance [†]		
						Urban	Extra Urban	Combined	Max. speed (mph)	0-60 mph (secs)	30-60 mph* (secs)
2.0 Duratorq TDCi 6-Speed Manual (140PS)	V	4x2 FWD	140 (103)	320 (340)	154	7.5 (37.7)	5.0 (56.5)	5.9 (47.9)	116	9.8	8.2
2.0 Duratorq TDCi 6-Speed Manual (140PS)	V	4x4 AWD	140 (103)	320 (340)	159	7.6 (37.2)	5.1 (55.4)	6.0 (47.1)	114	10.0	8.6
2.0 Duratorq TDCi 6-Speed PowerShift Automatic (140PS)	V	4x4 AWD	140 (103)	320 (340)	179	8.5 (33.2)	5.8 (48.7)	6.8 (41.5)	114	10.3	n/a
2.0 Duratorq TDCi 6-Speed Manual (163PS)	V	4x4 AWD	163 (123)	320 (340)	159	7.6 (37.2)	5.1 (55.4)	6.0 (47.1)	121	9.3	7.8
2.0 Duratorq TDCi 6-Speed PowerShift Automatic (163PS)	V	4x4 AWD	163 (120)	320 (340)	179	8.5 (33.2)	5.8 (48.7)	6.8 (41.5)	119	9.6	n/a
2.5 Duratec Petrol 6-Speed Manual (200PS)	V	4x4 AWD	200 (147)	320	234	13.9 (20.3)	7.6 (37.2)	9.9 (28.5)	130	7.9	7.6
2.5 Duratec Petrol 5-Speed Automatic (200PS)	V	4x4 AWD	200 (147)	320	244	14.6 (19.3)	7.8 (36.2)	10.3 (27.4)	127	8.5	n/a

*In 4th gear. †Ford test figures. **All CO₂ emissions figures in g/km and fuel consumption figures in L/100 km are tested in accordance with 80/1268/EEC as amended. The CO₂ emissions and fuel consumption test figures shown in the chart do not express or imply any guarantee of the emissions or fuel consumption of a car of the class in question. All the figures are based on tests conducted on vehicles with Zetec equipment level and with standard wheels and tyres; optional or accessory wheels and tyres may have an effect on the emissions and fuel consumption of a vehicle. **Note:** All petrol engines are equipped with a catalytic converter. **Basic kerbweight** includes driver (75kg), lubricants and filled fuel tank (90%) **Towing limits** quoted represent the maximum towing ability of the vehicle at its Gross Vehicle Mass to restart on a 12 per cent gradient at sea level. The performance and economy of all models will be reduced when used for towing. **Max Nose weight** is 105kg.

Model availability, weights and loads

	Kerbweight (kg)*	Gross Vehicle Mass (kg)	Max. Towable Mass (kg)
Ford Kuga			
2.0 Duratorq TDCi Diesel (140PS) 6-Speed Manual (Stage V) FWD	1584	2160	2000
2.0 Duratorq TDCi Diesel (140PS) 6-Speed Manual (Stage V) AWD	1614	2130	2100
2.0 Duratorq TDCi Diesel (140PS), PowerShift 6-speed Auto (Stage V) AWD	1672	2160	2100
2.0 Duratorq TDCi Diesel (163PS) 6-Speed Manual (Stage V) AWD	1614	2130	2100
2.0 Duratorq TDCi Diesel (163PS), PowerShift 6-speed Auto (Stage V) AWD	1672	2160	2100
2.5 Duratec Petrol (200PS) 6-Speed Manual (Stage V) AWD	1608	2130	2100
2.5 Duratec Petrol (200PS) 5-Speed Auto (Stage V) AWD	1653	2130	1500

*Represents the lightest kerbweight assuming driver at 75kg, full fluid levels, subject to manufacturing tolerances and options, etc, fitted. **Note** all petrol engines are equipped with a catalytic converter. All vehicles are manual unless stated. **Towing limits** The performance and economy of all models will be reduced when used for towing. **Nose weight** limit is a maximum 105kg on all models. For further guidance, refer to the National Caravan Councils Towing Guide.

Dimensions

Overall length (mm)	4443
Overall width with/without mirrors (mm)	2128/1842
Overall height (unladen) (with roof rails) (mm)	1710
Turning circle – kerb to kerb (m)	11.5
Luggage capacity (litres)[†]	
5-seat mode (laden to package tray) (with mini steel spare)	360
2-seat mode (laden to roof) (with mini steel spare)	1355
Fuel tank capacity (litres)	
Petrol	66.0
Diesel	66.0

*Measured using the GCIE method. Dimensions may vary dependent on the model and equipment fitted.

Colour and trim

Model	Zetec	Titanium	Titanium X
Seat facing trim	Rack	Airfield/partial Napoli leather	Napoli leather
Seat facing trim colour	Generic Silver	Ebony	Ebony
Seat back stripe colour	Gecko in Metal Grey	Generic Silver	N/A
Door handle colour	Antimon	Pontos	Proteus
Gearshift bezel colour	Triton Silver	Triton Silver	Proteus
H bezel colour	Antimon	Pontos	Proteus
Solid body colour			
Frozen White	S	E	E
Blazer Blue	S	E	E
Metallic body colours*			
Mars Red	S	E	E
Lunar Sky	S	E	E
Moondust Silver	S	E	E
Panther Black	S	E	E
Micastone	S	E	E
Midnight Sky	S	E	E
Electric White (Pearlescent)	–	E	E

Seat trim colour key: S – Generic Silver, E – Ebony. *Metallic paint is optional, at extra cost.



Frozen White
Solid body colour



Micastone
Metallic body colour*



Mars Red
Metallic body colour*



Panther Black
Metallic body colour*



Moondust Silver
Metallic body colour*



Lunar Sky
Metallic body colour*



Midnight Sky
Metallic body colour*

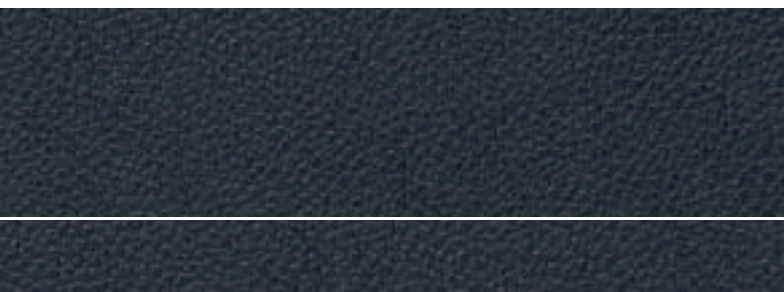


Ice White
Special metallic body colour*

The Ford Kuga is covered by the Ford Perforation Warranty for 12 years from the date of first registration. Subject to terms and conditions.

Note The car images used are to illustrate body colours only and may not reflect current specification. Colours and trims reproduced within this brochure may vary from the actual colours, due to the limitations of the printing processes used.

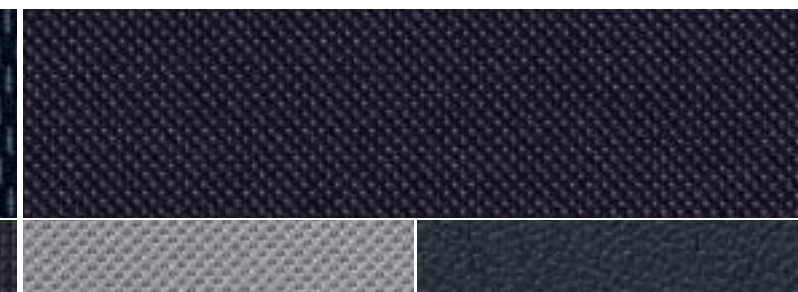
*Metallic body colours are options at extra cost.



Titanium X
Seat facing: Napoli leather in Ebony
Bolster: Napoli leather in Ebony



Zetec
Seat facing: Rack in Generic Silver
Stripe: Gecko in Metal Grey
Bolster: Gecko in Anthracite



Titanium
Seat facing: Airfield in Ebony
Stripe: Airfield in Generic Silver
Bolster: Napoli leather in Ebony



MY 2012 GBR en

Illustrations, descriptions and specifications. This brochure was correct at the time of going to print. However, Ford policy is one of continuous product development. The right is reserved to change specifications, colours and prices of the models and items illustrated and described in this publication at any time. For the latest details always consult your Ford Dealer. **Optional equipment.** Throughout this publication, wherever a feature is described as being an 'Option' or 'Optional Fitment/Pack', etc., you should assume that it will be at extra cost to the base vehicle, unless specifically stated to the contrary. All models and colour combinations are subject to availability. **Note.** Some images portrayed are of a pre-production model and/or are computer generated, therefore, the design/features on the final version of the vehicle may differ in various respects. In addition, some of the features shown on the vehicles may be optional. **Note.** This brochure contains both original Ford accessories as well as a range of carefully selected products from our suppliers, which are featured under their own brands. All supplier branded products are subject to warranty terms defined by the relevant suppliers and do not lie within the responsibility of Ford. **Note.** The Bluetooth® word mark and logos are owned by the Bluetooth SIG, Inc. and any use of such marks by Ford Motor Company is under licence. Other trademarks and trade names are those of their respective owners.

The Government fuel figures do not express or imply any guarantee of the fuel consumption of any particular car. The cars themselves have not been tested and there are inevitably differences between individual cars of the same model. In addition, a car may incorporate particular modifications. Furthermore, the driver's style and road and traffic conditions, as well as the extent to which the car has been driven and the standard of maintenance, will affect its fuel consumption. **Insurance groups** are only as recommended by the Association of British Insurers. You should always consult your insurance adviser for confirmation.



Ford and BP – working together to reduce fuel consumption and emissions.



Collect Nectar points at participating Ford Dealers and Authorised Repairers now. So take a look at the latest Ford Service Promotions by visiting the Owner Services section within www.ford.co.uk.

Allergy-tested interior All materials used in the manufacture of the interior of this vehicle meet the strict requirements of the TUV TOXPROOF Criteria Catalogue for Vehicle Interiors by the TUV Produkt und Umwelt GmbH and are designed to minimise the risk of allergic reactions. With doors and windows closed, the interior materials selected – together with the integrated pollen filter – protect the passengers against most allergising particles from the outdoor air. At higher temperatures, the additional use of air conditioning is recommended.



Published by Ford Motor Company Limited, Brentwood, Essex, England.
Registered in England No. 235446.
FA 1533/7
BJN 307836. FoE H42E.
PN 179505/1011/55m/GBR en
August 2011.
© Ford Motor Company Limited.

www.ford.co.uk